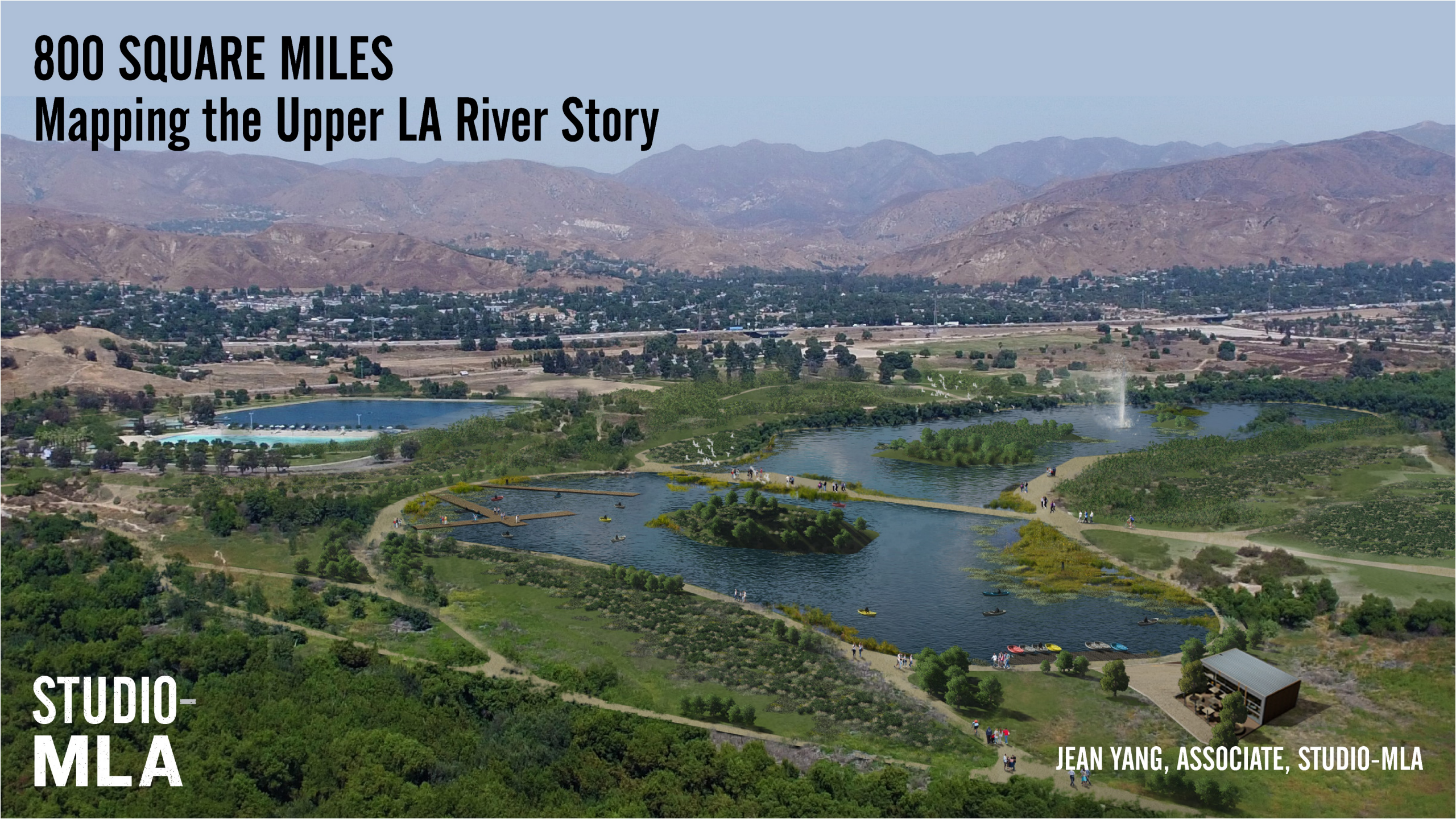


800 SQUARE MILES

Mapping the Upper LA River Story

**STUDIO-
MLA**

JEAN YANG, ASSOCIATE, STUDIO-MLA





800 SQUARE MILES

Mapping the Upper LA River Story

RE-THINKING THE QUEST FOR THE PERFECT SHAPE FILE

**STUDIO-
MLA**

JEAN YANG, ASSOCIATE, STUDIO-MLA

Opinion

Maps Don't Lie

Unless someone goes out of his way to try to make one do so.



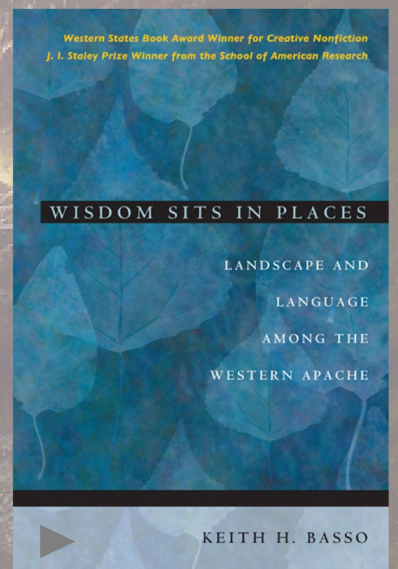
By Charles M. Blow
Opinion Columnist

Sept. 8, 2019



President Trump on Wednesday with a map of a previously projected path of Hurricane Dorian. Michael Reynolds/EPA, via Shutterstock





MAPS AS
NARRATIVE

THE TRIBUTARY
STORY

BASE MAP
FRAMEWORK

COMMUNITY
PORTRAITS

LAYERING
DESIGN

Find a place you want to explore, then
Click on a location to see its historical maps.

3

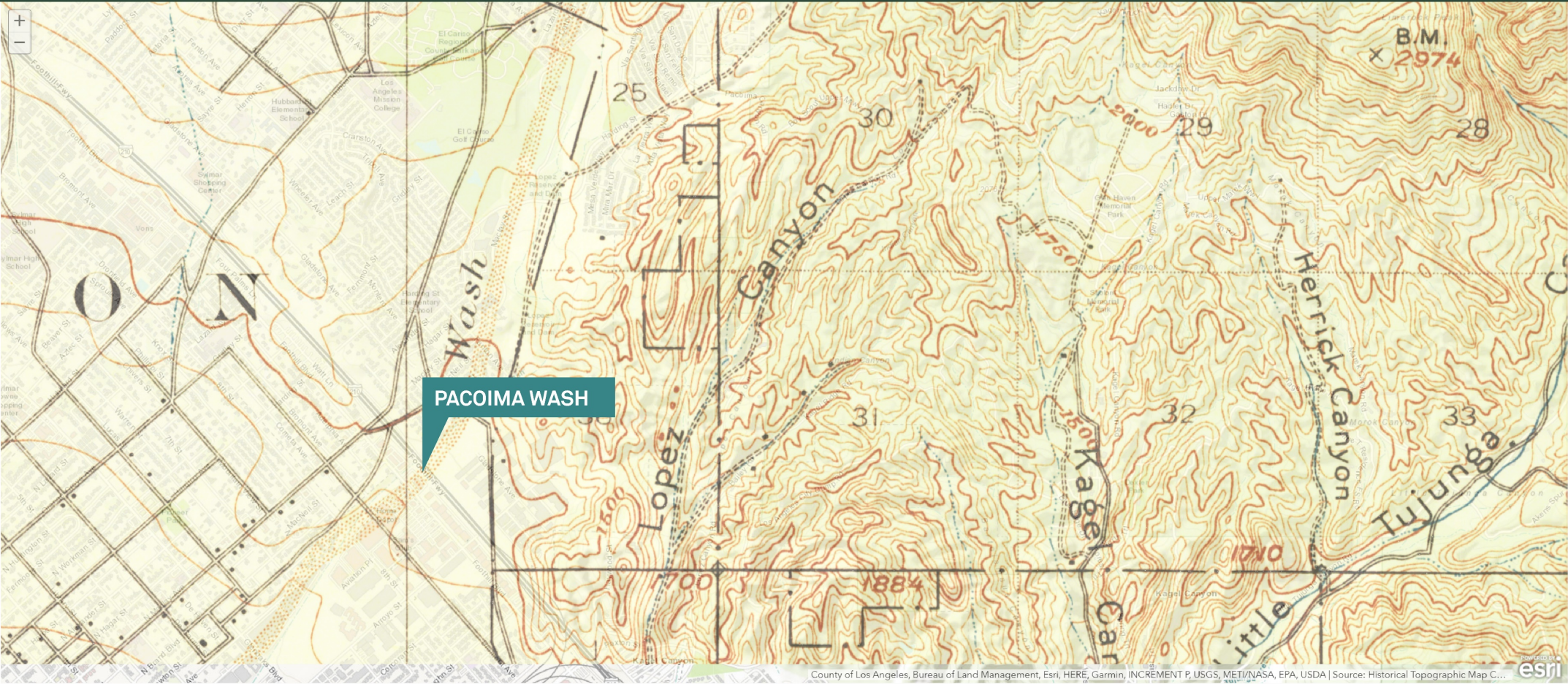
Compare maps using the transparency sliders, and
Reorder maps by dragging them.

[Sign in](#) to save web maps to your ArcGIS
Online account

X



San Fernando
1900
[download map](#)

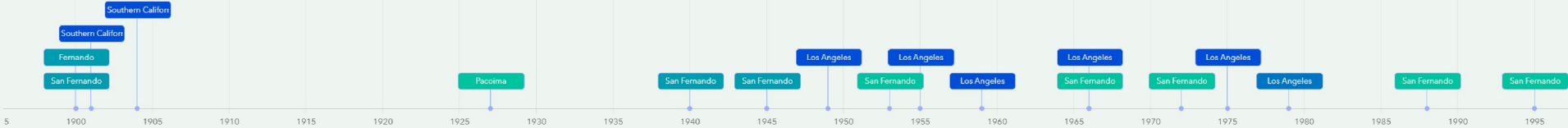


USGS, 1900

Reset

Historical Map Scales

- 250,000
- 125,000
- 62,500
- 24,000
- 12,000



MAPS AS
NARRATIVE

THE TRIBUTARY
STORY

BASE MAP
FRAMEWORK

COMMUNITY
PORTRAITS


LAYERING
DESIGN

SUMMING
IT UP

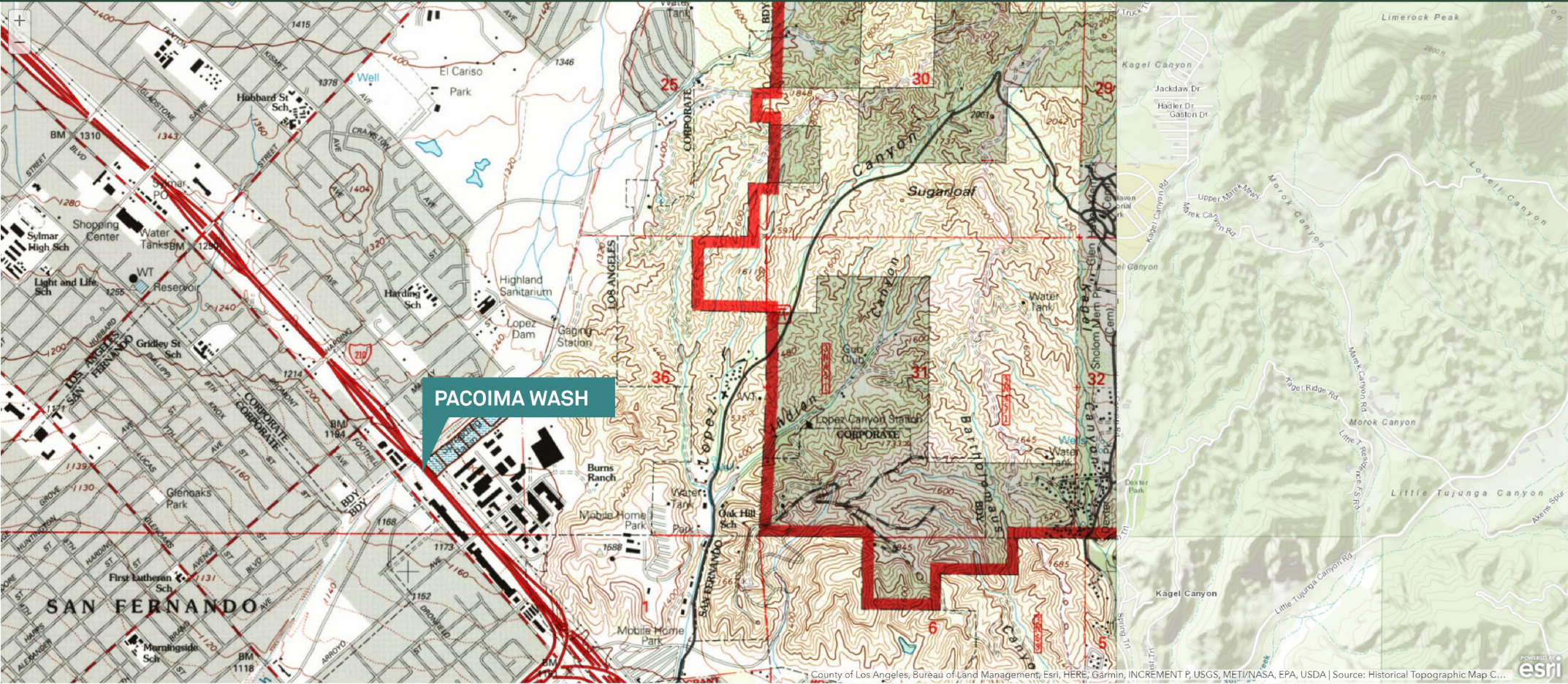
Find a place you want to explore, then
Click on a location to see its historical maps.

Compare maps using the transparency sliders, and
Reorder maps by dragging them.

[Sign in](#) to save web maps to your ArcGIS
Online account

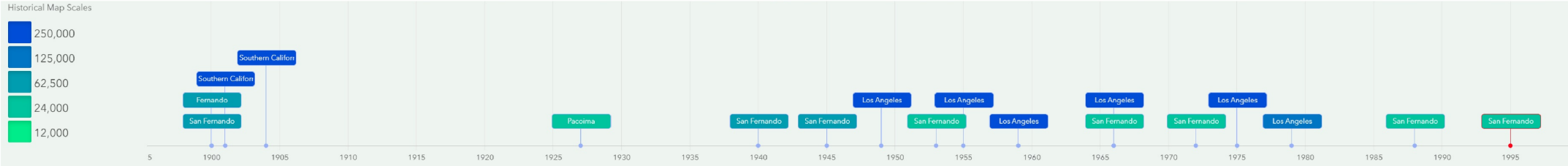


San Fernando
1995
[download map](#)



USGS, 1988

 Reset



MAPS AS
NARRATIVE

USGS, 1988

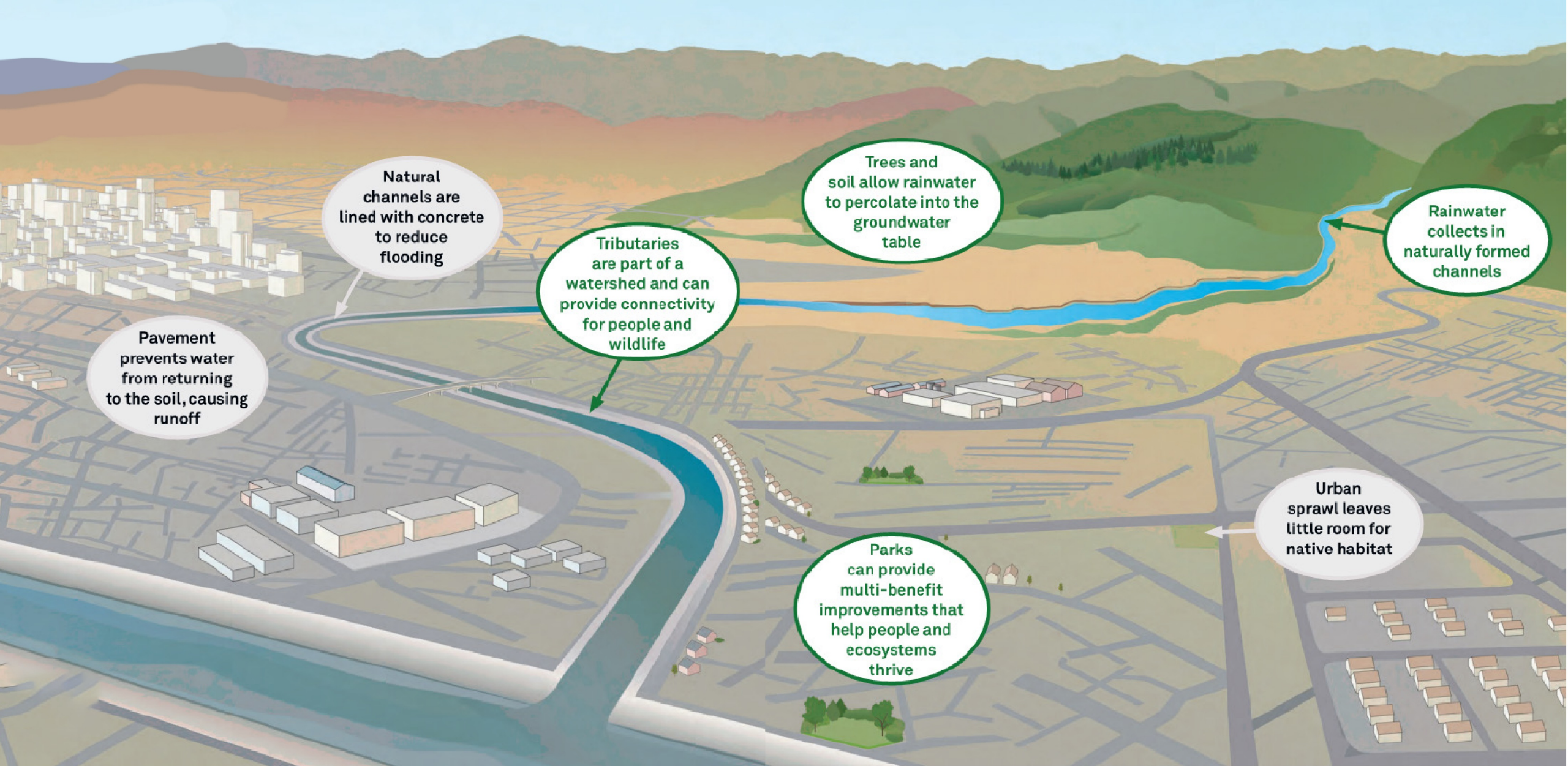
THE TRIBUTARY
STORY

BASE MAP
FRAMEWORK

COMMUNITY
PORTRAITS

LAYERING
DESIGN

SUMMING
IT UP





MAPS AS
NARRATIVE



THE TRIBUTARY
STORY



BASE MAP
FRAMEWORK




COMMUNITY
PORTRAITS



LAYERING
DESIGN



SUMMING
IT UP

A group of people in business attire are gathered around a wooden conference table, signing documents. The scene is a close-up, focusing on the hands and arms of the participants. One person in the foreground is wearing a red and white striped shirt and a black watch, and is actively signing a document. Other people are visible in the background, some holding pens and others looking at the documents. The overall atmosphere is professional and collaborative.

The revitalization plan shall address the unique and diverse needs of the Upper Los Angeles River, Pacoima Wash, Tujunga Wash, and Verdugo Wash, and the communities through which they pass, and to include **WATERSHED** education programs... the master planning process (shall) include community engagement and a prioritization of **DISADVANTAGED COMMUNITIES.**

AB466





scale one
WATERSHED

scale two
COMMUNITY

MAPS AS
NARRATIVE



THE TRIBUTARY
STORY



BASE MAP
FRAMEWORK



COMMUNITY
PORTRAITS



LAYERING
DESIGN



SUMMING
IT UP

scale three

I ♥ TRIBUTARIES

MAPS AS
NARRATIVE



THE TRIBUTARY
STORY



BASE MAP
FRAMEWORK



COMMUNITY
PORTRAITS

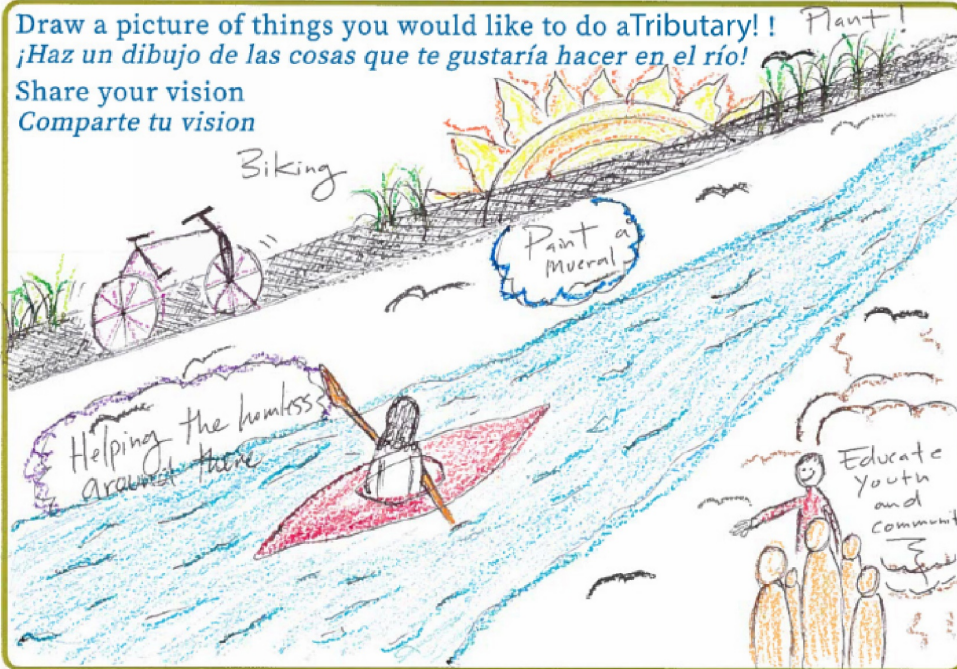


LAYERING
DESIGN



SUMMING
IT UP

Reimagine Your Tributary Creeks, and Streams



I have **tributary** dreams,
I dream of a waterway that is
Wide and Narrow,
Deep and shallow,
A waterway that can be whatever
It wants and needs and was born to be

Water that is clean and fresh,
Born of water from the sky,
Carried down the mountains,
And spreads itself out,
Replenishes the lands as it shares its life,
Giving soul as it makes its way to the sea

- Pacoima Resident
Written at a Community Meeting

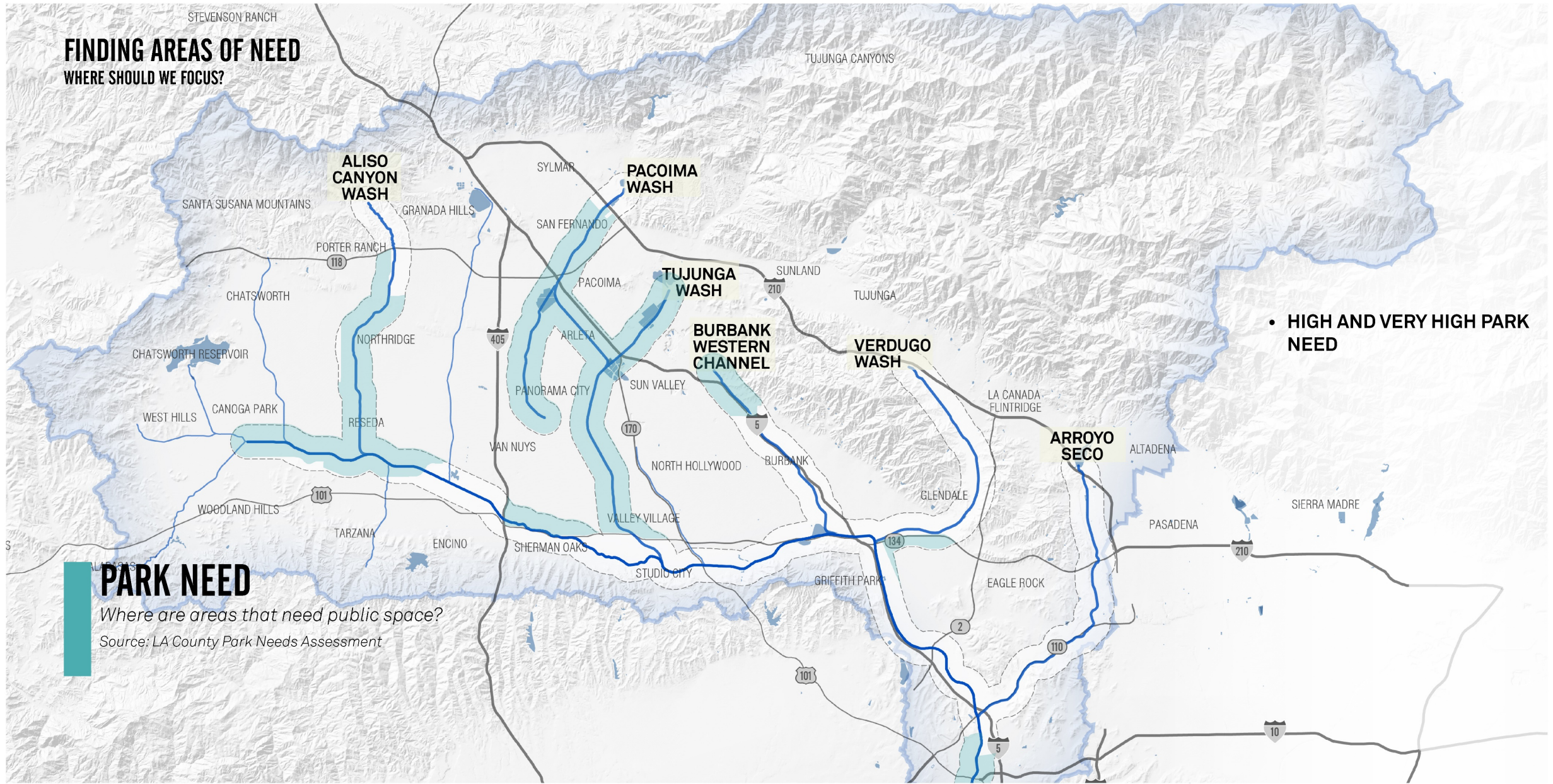
Wonder - is not precisely Knowing
And not precisely Knowing not -

Emily Dickinson



FINDING AREAS OF NEED

WHERE SHOULD WE FOCUS?



MAPS AS
NARRATIVE



THE TRIBUTARY
STORY



BASE MAP
FRAMEWORK



COMMUNITY
PORTRAITS



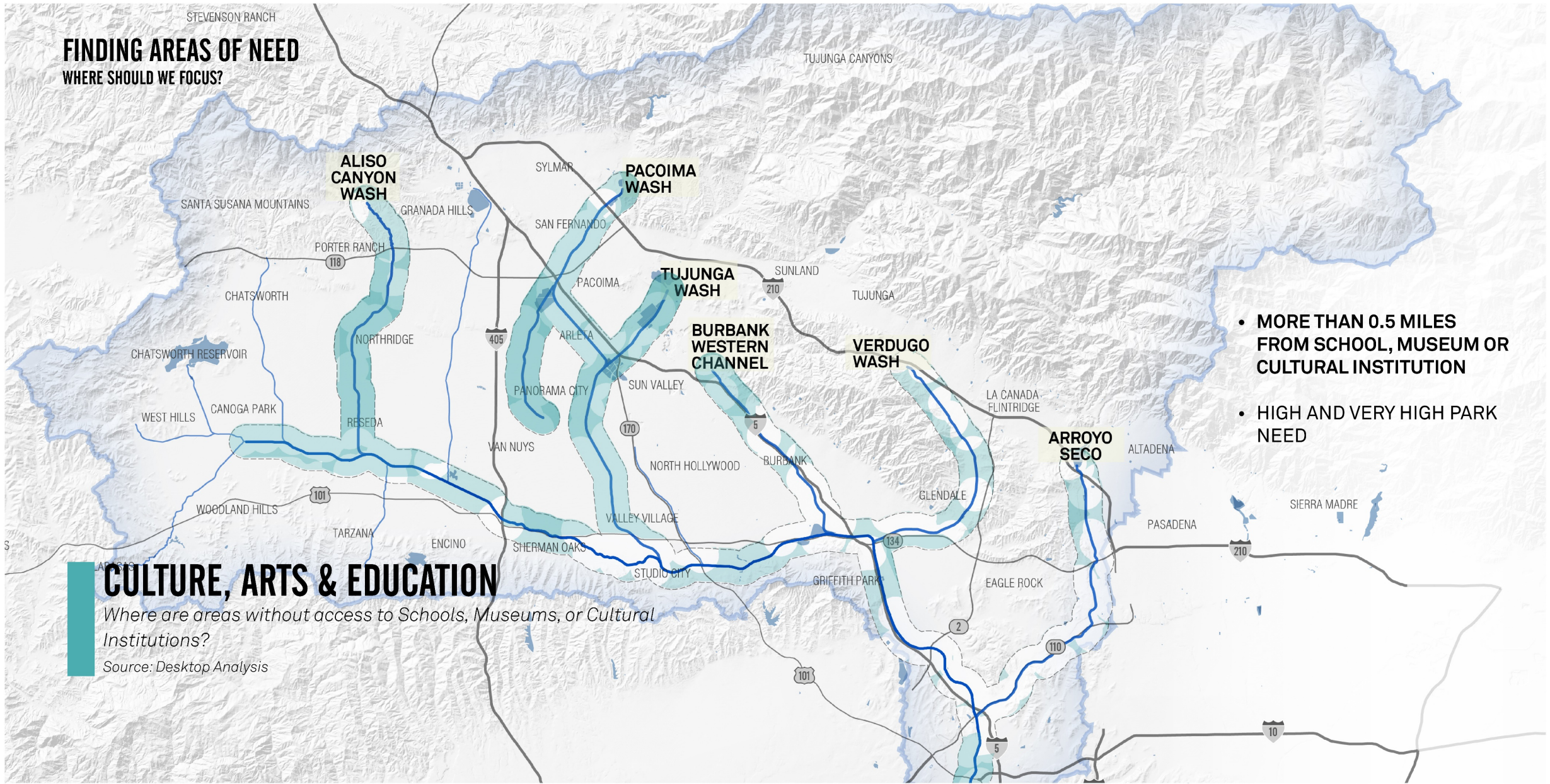
LAYERING
DESIGN



SUMMING
IT UP

FINDING AREAS OF NEED

WHERE SHOULD WE FOCUS?



- MORE THAN 0.5 MILES FROM SCHOOL, MUSEUM OR CULTURAL INSTITUTION
- HIGH AND VERY HIGH PARK NEED

CULTURE, ARTS & EDUCATION

Where are areas without access to Schools, Museums, or Cultural Institutions?

Source: Desktop Analysis

MAPS AS
NARRATIVE



THE TRIBUTARY
STORY



BASE MAP
FRAMEWORK



COMMUNITY
PORTRAITS



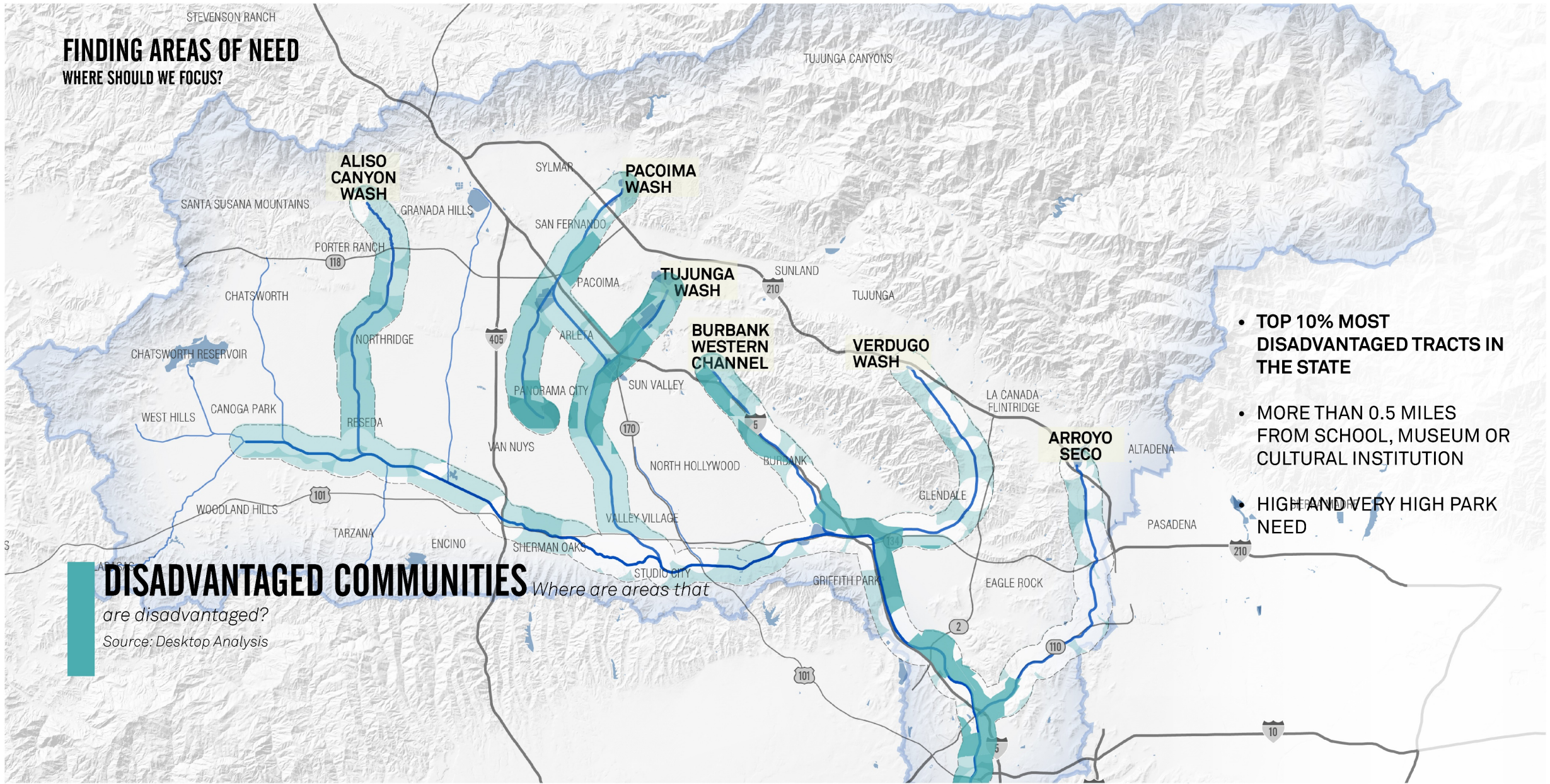
LAYERING
DESIGN



SUMMING
IT UP

FINDING AREAS OF NEED

WHERE SHOULD WE FOCUS?



- TOP 10% MOST DISADVANTAGED TRACTS IN THE STATE
- MORE THAN 0.5 MILES FROM SCHOOL, MUSEUM OR CULTURAL INSTITUTION
- HIGH AND VERY HIGH PARK NEED

DISADVANTAGED COMMUNITIES

are disadvantaged?
Source: Desktop Analysis

MAPS AS
NARRATIVE



THE TRIBUTARY
STORY



BASE MAP
FRAMEWORK



COMMUNITY
PORTRAITS



LAYERING
DESIGN



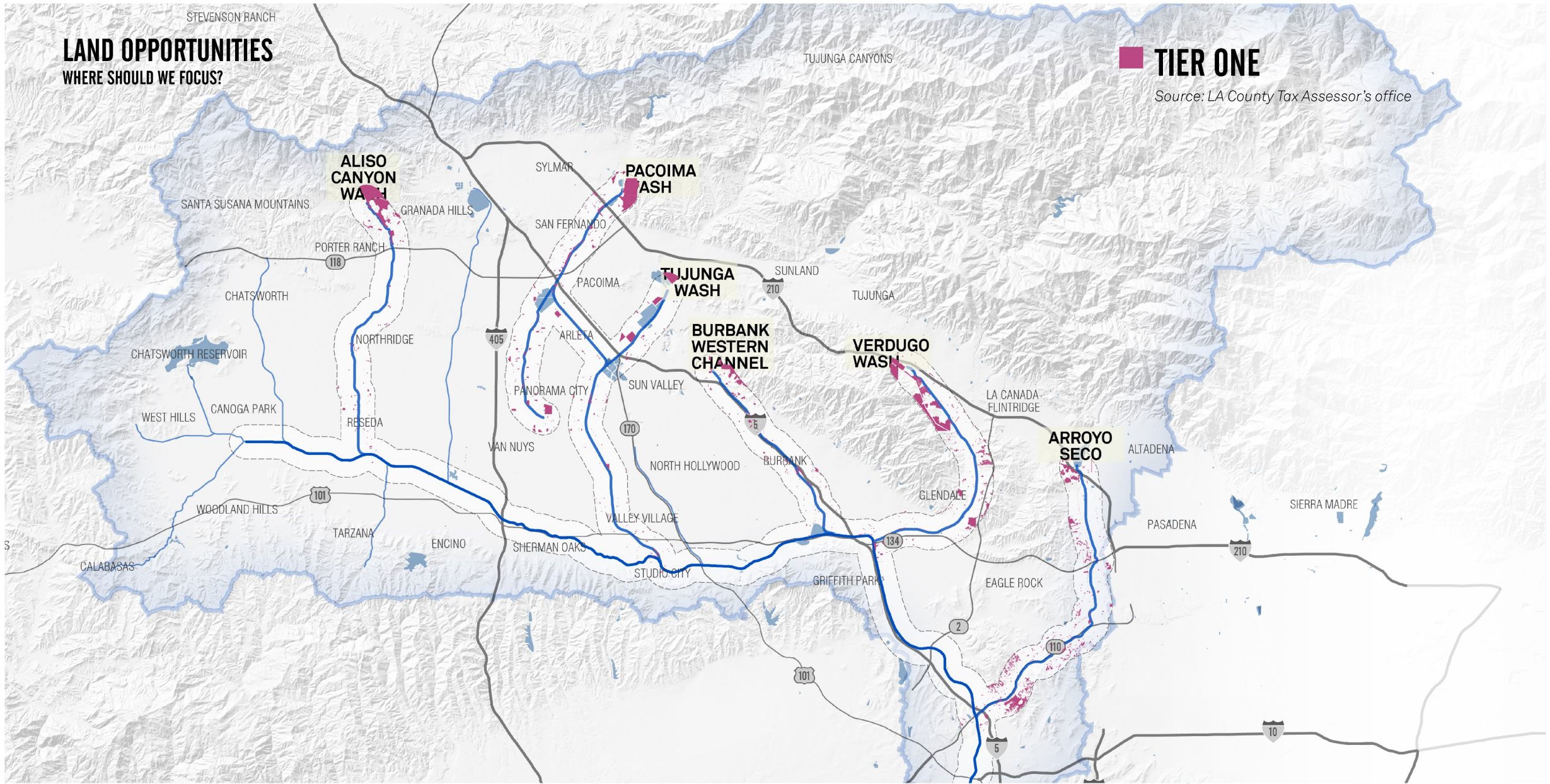
SUMMING
IT UP

LAND OPPORTUNITIES

WHERE SHOULD WE FOCUS?

TIER ONE

Source: LA County Tax Assessor's office



MAPS AS
NARRATIVE



THE TRIBUTARY
STORY



BASE MAP
FRAMEWORK



COMMUNITY
PORTRAITS



LAYERING
DESIGN



SUMMING
IT UP

LAND OPPORTUNITIES

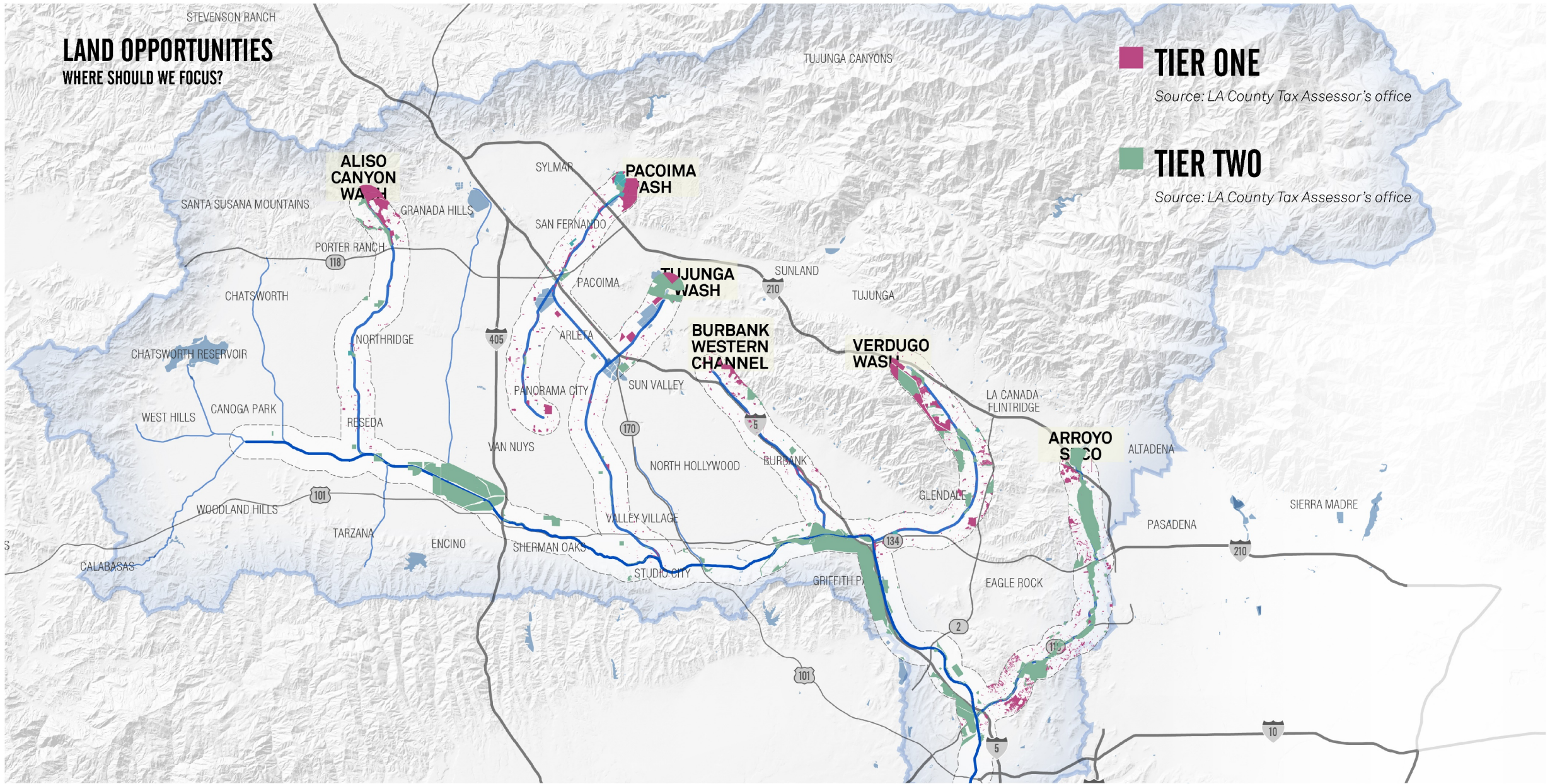
WHERE SHOULD WE FOCUS?

TIER ONE

Source: LA County Tax Assessor's office

TIER TWO

Source: LA County Tax Assessor's office



MAPS AS
NARRATIVE



THE TRIBUTARY
STORY



BASE MAP
FRAMEWORK



COMMUNITY
PORTRAITS



LAYERING
DESIGN



SUMMING
IT UP

LAND OPPORTUNITIES

WHERE SHOULD WE FOCUS?

TIER ONE

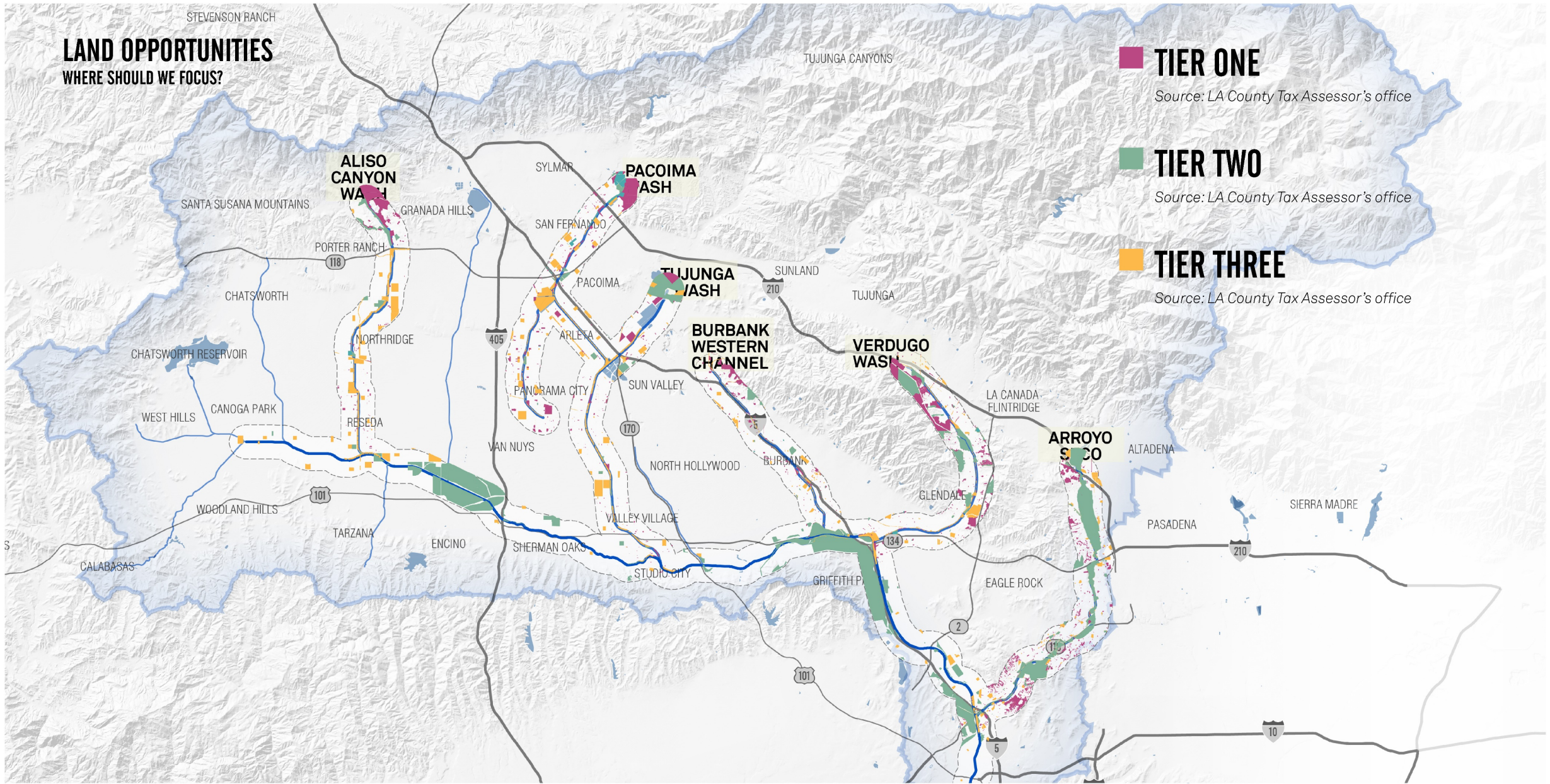
Source: LA County Tax Assessor's office

TIER TWO

Source: LA County Tax Assessor's office

TIER THREE

Source: LA County Tax Assessor's office



MAPS AS
NARRATIVE



THE TRIBUTARY
STORY



BASE MAP
FRAMEWORK



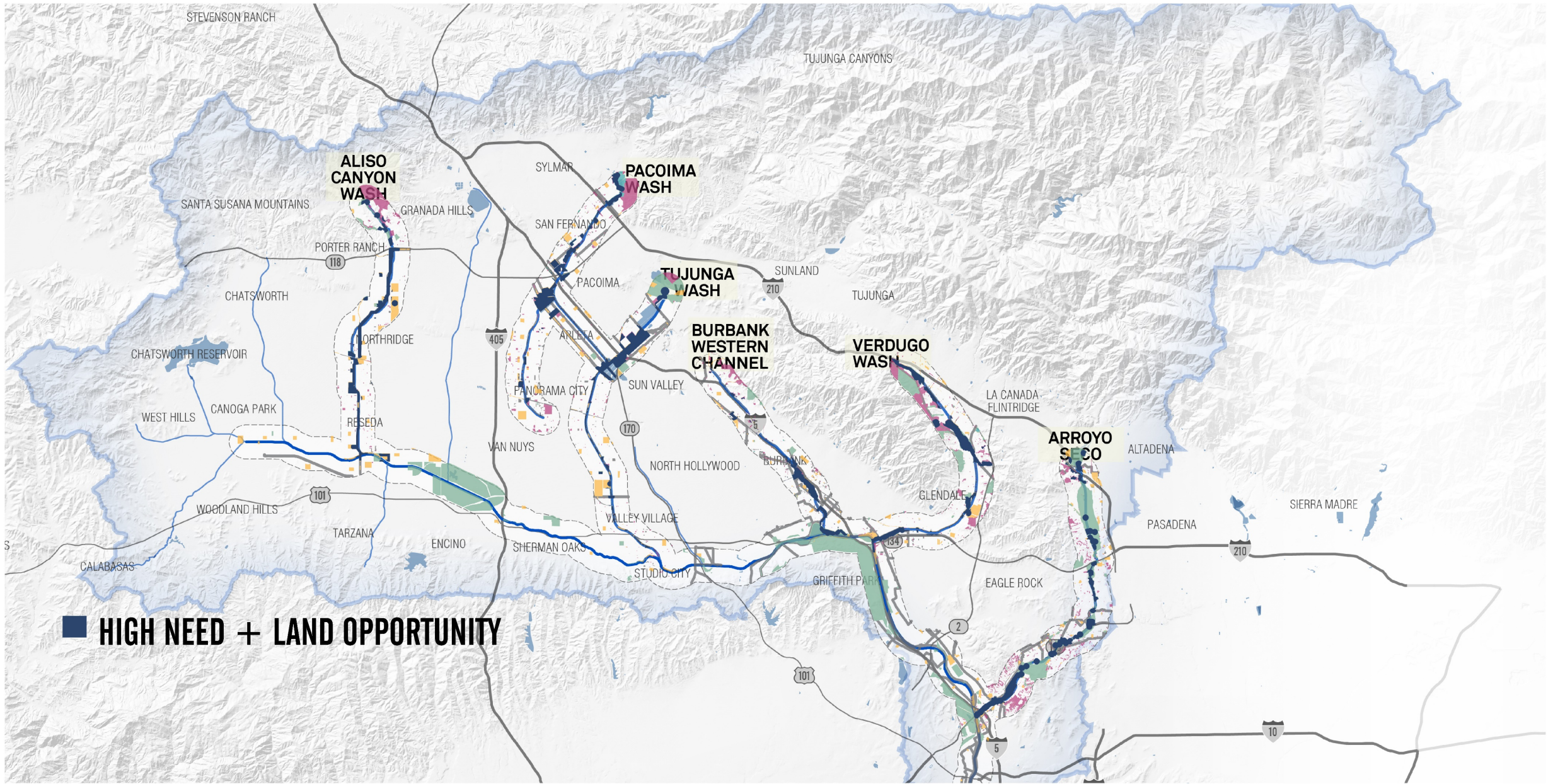
COMMUNITY
PORTRAITS



LAYERING
DESIGN



SUMMING
IT UP



MAPS AS
NARRATIVE



THE TRIBUTARY
STORY



BASE MAP
FRAMEWORK



COMMUNITY
PORTRAITS



LAYERING
DESIGN



SUMMING
IT UP



MAPS AS
NARRATIVE



THE TRIBUTARY
STORY



BASE MAP
FRAMEWORK



COMMUNITY
PORTRAITS



LAYERING
DESIGN



SUMMING
IT UP



MAPS AS
NARRATIVE



THE TRIBUTARY
STORY



BASE MAP
FRAMEWORK



COMMUNITY
PORTRAITS

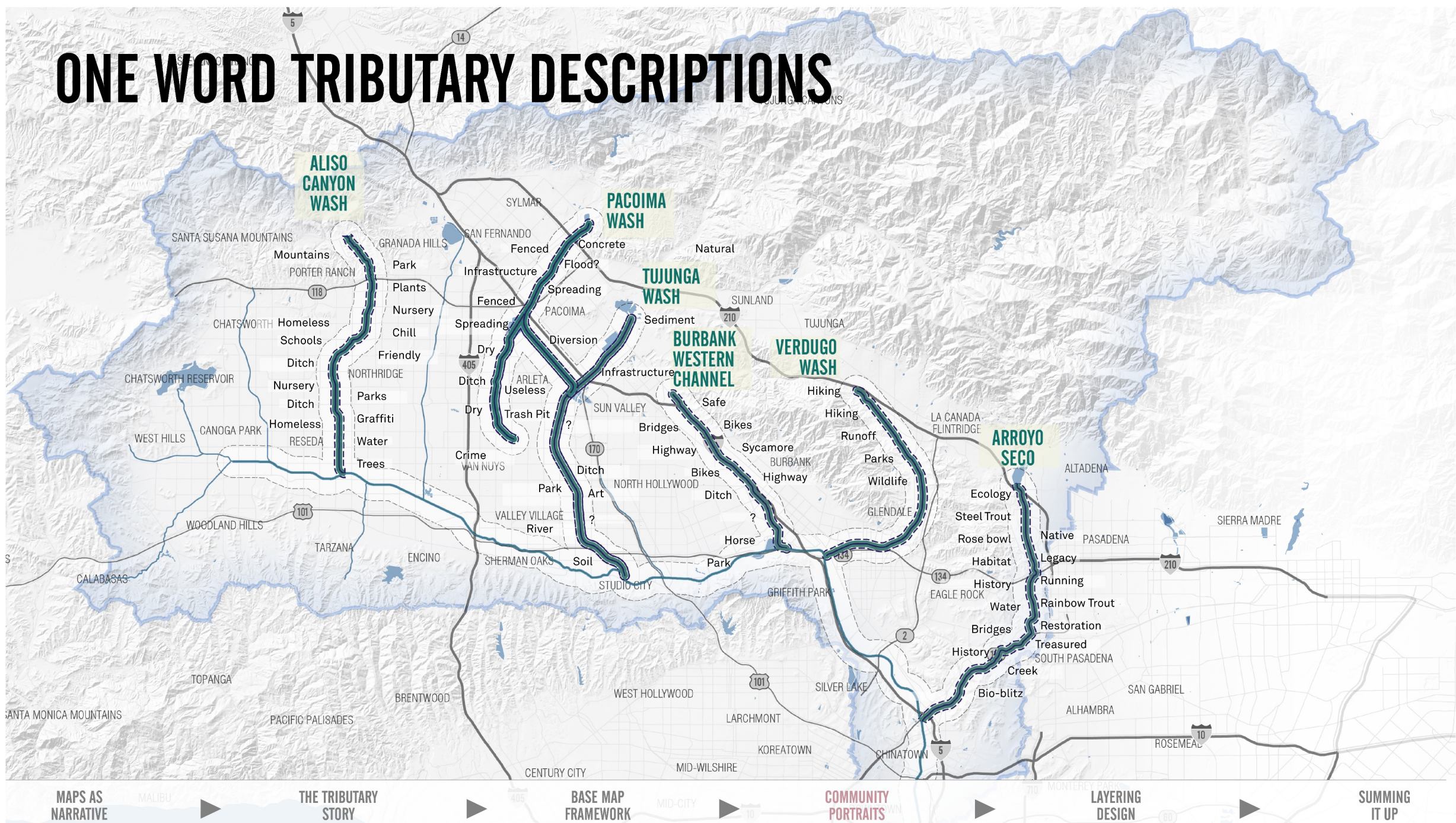


LAYERING
DESIGN

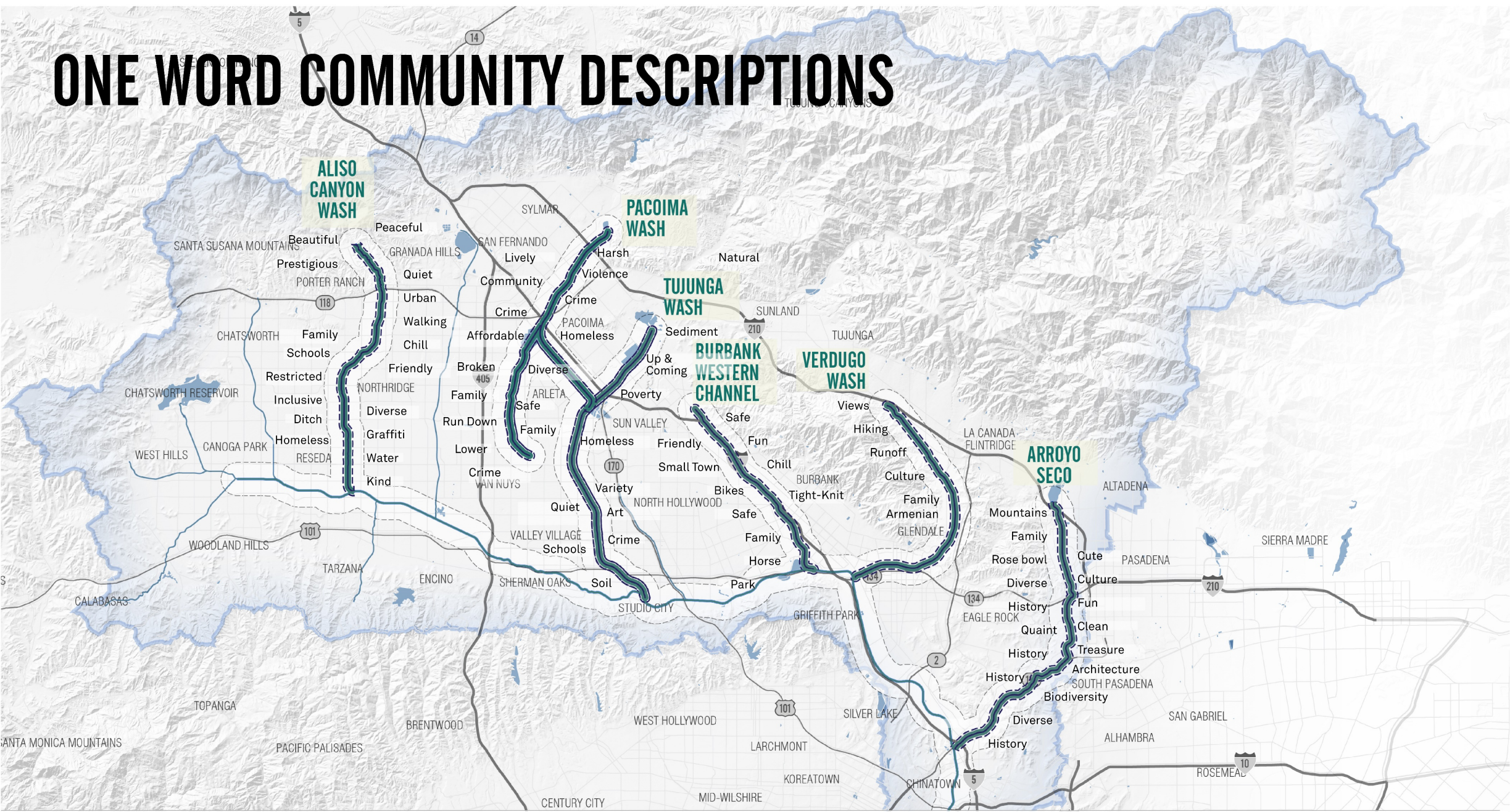


SUMMING
IT UP

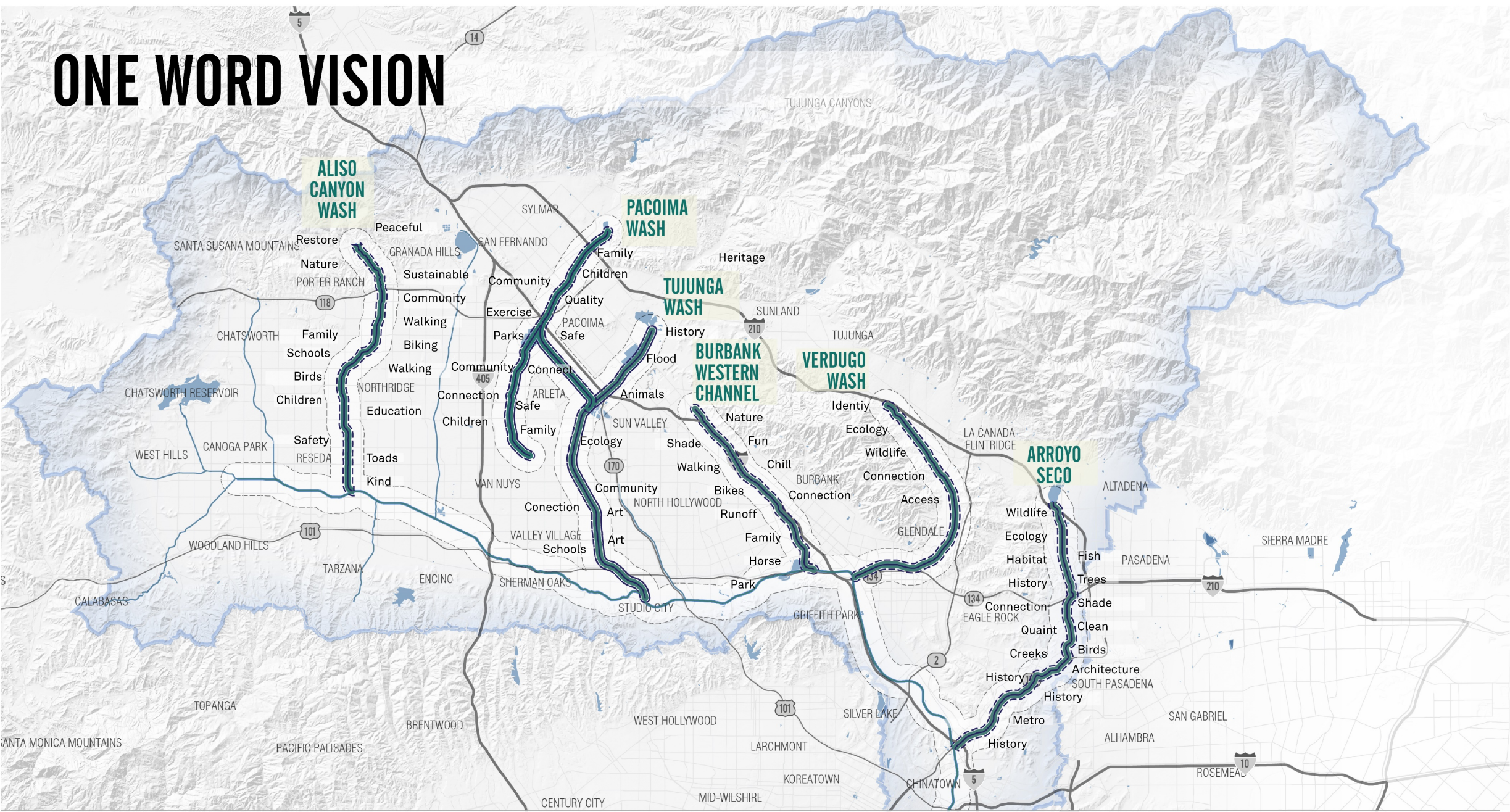
ONE WORD TRIBUTARY DESCRIPTIONS



ONE WORD COMMUNITY DESCRIPTIONS



ONE WORD VISION



TRIBUTARY

FENCED INFRASTRUCTURE CONCRETE

MOUNTAINS 1200 ACRES SEA 40K ACRES DRAINAGE

COMMUNITY

LIVELY CRIME AFFORDABLE

36 PEOPLE /ACRE 12 SCHOOL S

VISION

QUALITY CHILDREN FAMILY

12 % AREA IS VACANT

Nothern Pacoima
Snapshot

MAPS AS
NARRATIVE



THE TRIBUTARY
STORY



BASE MAP
FRAMEWORK



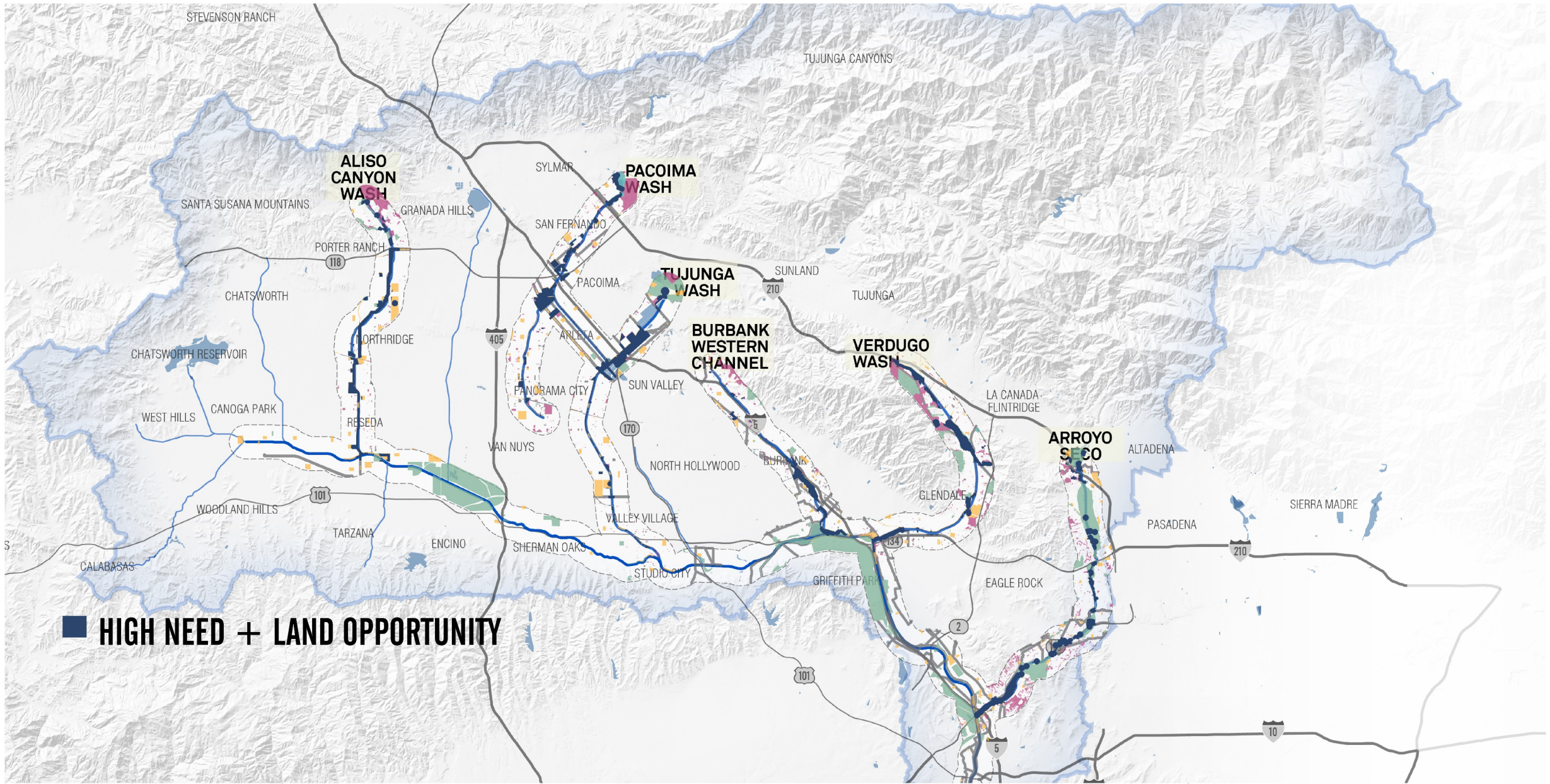
COMMUNITY
PORTRAITS



LAYERING
DESIGN



SUMMING
IT UP



■ **HIGH NEED + LAND OPPORTUNITY**

MAPS AS
NARRATIVE



THE TRIBUTARY
STORY



BASE MAP
FRAMEWORK



COMMUNITY
PORTRAITS



LAYERING
DESIGN



SUMMING
IT UP



MAPS AS
NARRATIVE



THE TRIBUTARY
STORY



BASE MAP
FRAMEWORK



COMMUNITY
PORTRAITS



LAYERING
DESIGN



SUMMING
IT UP

TRIBUTARY

ECOLOGY HABITAT BRIDGES

HISTORIC STREAMS 800 ACRES SEA 30K ACRES DRAINAGE

COMMUNITY

HISTORY LUMMIS PARKS

23 PEOPLE /ACRE 12 SCHOOLS METRO STATION

VISION

HISTORY CONNECTION RESTORATION

5.6 % AREA IS VACANT

Heritage Square
Snapshot

MAPS AS
NARRATIVE



THE TRIBUTARY
STORY



BASE MAP
FRAMEWORK



COMMUNITY
PORTRAITS



LAYERING
DESIGN



SUMMING
IT UP



MAPS AS
NARRATIVE



THE TRIBUTARY
STORY



BASE MAP
FRAMEWORK



COMMUNITY
PORTRAITS



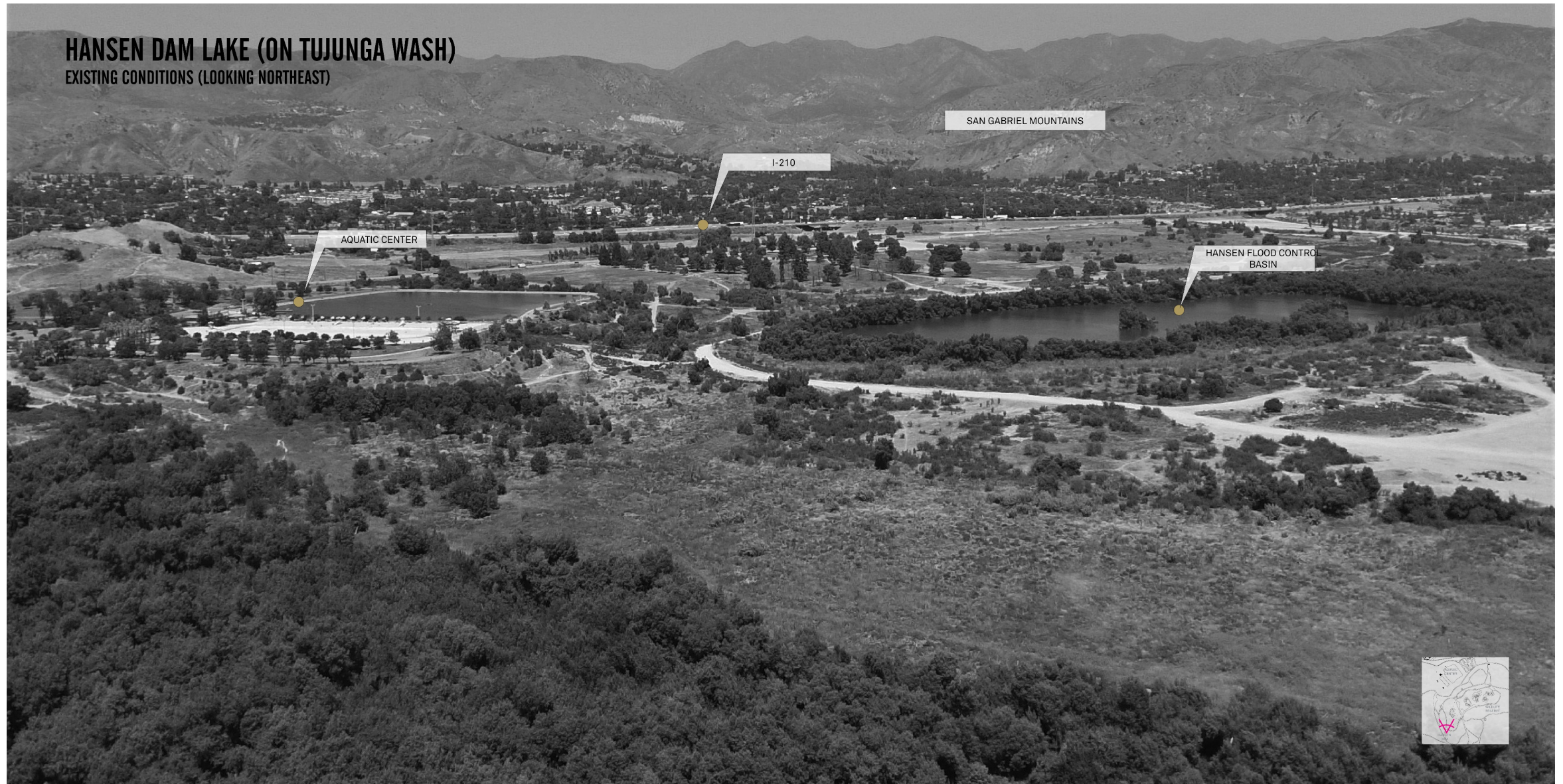
LAYERING
DESIGN



SUMMING
IT UP

HANSEN DAM LAKE (ON TUJUNGA WASH)

EXISTING CONDITIONS (LOOKING NORTHEAST)



MAPS AS
NARRATIVE



THE TRIBUTARY
STORY



BASE MAP
FRAMEWORK



COMMUNITY
PORTRAITS



LAYERING
DESIGN



SUMMING
IT UP

TRIBUTARY

SEDIMENT HOLIDAY LAKE ECOLOGY

HISTORIC LAKE 14 ACRES SEA 11K ACRES DRAINAGE

COMMUNITY

COMMUNITY SAFETY NATURE

38 PEOPLE /ACRE SCIENCE MUSUEM REGIONAL PARK

VISION

HOLIDAY LAKE ECOLOGY RESTORATION

6.1% AREA IS VACANT

Snapshot of southern
edge of Arroyo Seco

MAPS AS
NARRATIVE



THE TRIBUTARY
STORY



BASE MAP
FRAMEWORK



COMMUNITY
PORTRAITS



LAYERING
DESIGN



SUMMING
IT UP

HANSEN DAM LAKE (ON TUJUNGA WASH)

DESIGN CONCEPT (LOOKING NORTHEAST)



MAPS AS
NARRATIVE



THE TRIBUTARY
STORY



BASE MAP
FRAMEWORK



COMMUNITY
PORTRAITS



LAYERING
DESIGN



SUMMING
IT UP

HANSEN DAM SPREADING GROUNDS (ON THE TUJUNGA WASH)

EXISTING CONDITIONS (LOOKING NORTHEAST)



MAPS AS
NARRATIVE



THE TRIBUTARY
STORY



BASE MAP
FRAMEWORK



COMMUNITY
PORTRAITS



LAYERING
DESIGN



SUMMING
IT UP

TRIBUTARY

UPSTREAM FILTRATION RECHARGE

RETIRED MINE 13 ACRES SEA 50% AREA IS IMPERVIOUS

COMMUNITY

COMMUNITY SAFETY NATURE

38 PEOPLE /ACRE , 1.65 ACRES OF PARK PER PERSON

VISION

OPEN SPACE BIRDS TURTLE

80% AREA IS VACANT

Snapshot of southern
edge of Arroyo Seco

MAPS AS
NARRATIVE



THE TRIBUTARY
STORY



BASE MAP
FRAMEWORK



COMMUNITY
PORTRAITS



LAYERING
DESIGN



SUMMING
IT UP

HANSEN DAM SPREADING GROUNDS (ON THE TUJUNGA WASH)

EXISTING CONDITIONS (LOOKING NORTHEAST)



MAPS AS
NARRATIVE



THE TRIBUTARY
STORY



BASE MAP
FRAMEWORK



COMMUNITY
PORTRAITS



LAYERING
DESIGN



SUMMING
IT UP



WILBUR DEBRIS BASIN



PACOIMA SPREADING GROUNDS



HANSEN DAM PARK



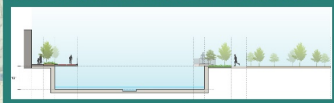
TUJUNGA SPREADING GROUNDS



VERDUGO ECOLOGICAL LINK



ALISO SOUTHERN CONNECTORS



TUJUNGA GREENBELT EXTENSION



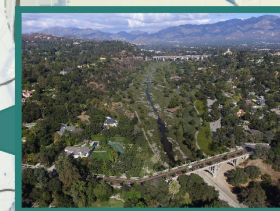
SEPULVEDA BASIN



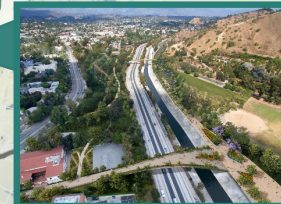
BURBANK MULTI-USE

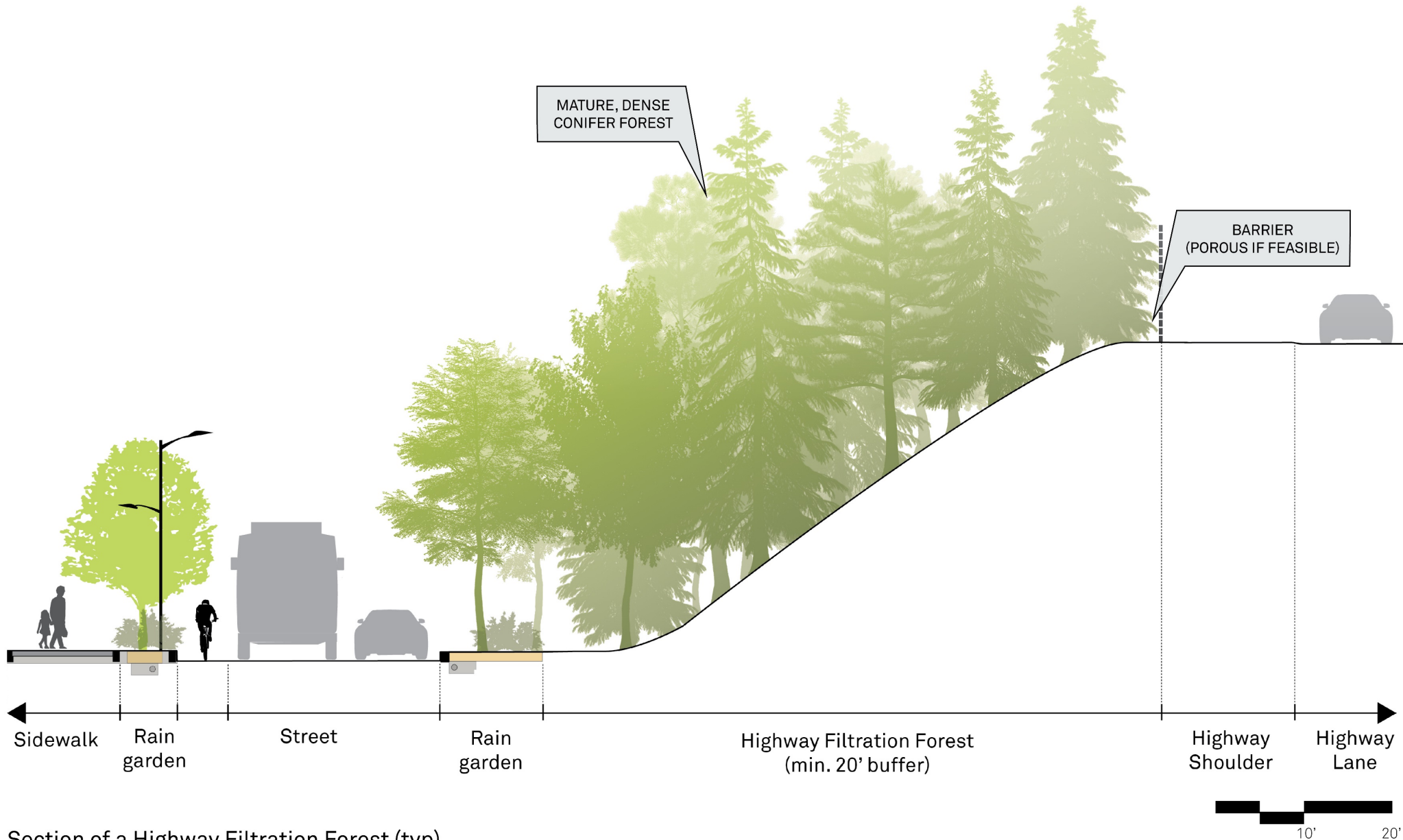


ARROYO NATURALIZATION



HERITAGE SQUARE





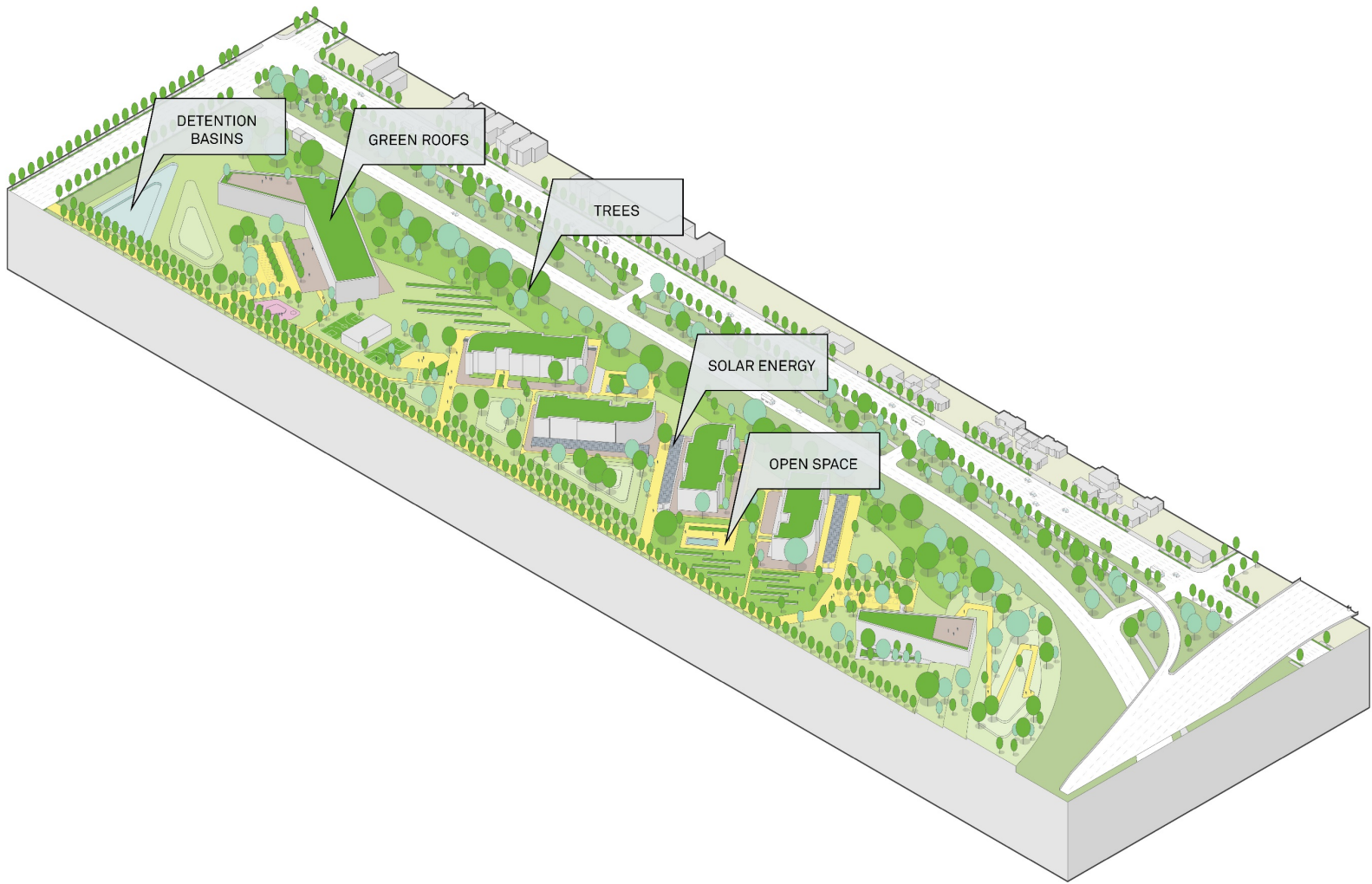
Section of a Highway Filtration Forest (typ)

BENEFITS PER ACRE

For each of the 199.8 acres of **Highway Filtration Forest** opportunities identified we may expect the following benefits per acre

WATER	0.6 acres	New or Enhanced Permeable Paving
	17,932 gallons	Additional Stormwater Capture from planting
AIR	51 trees	
	56.8 tons	Carbon Sequestration from Planting and Trees
	1.3 tons	Additional Carbon Avoided
HABITAT	44.9 pounds	Additional Pollutant Removal
	0.2 acres	New/Enhanced Ecological Habitat
	0.59 acres	New / Enhanced Tree Canopy

HOUSING

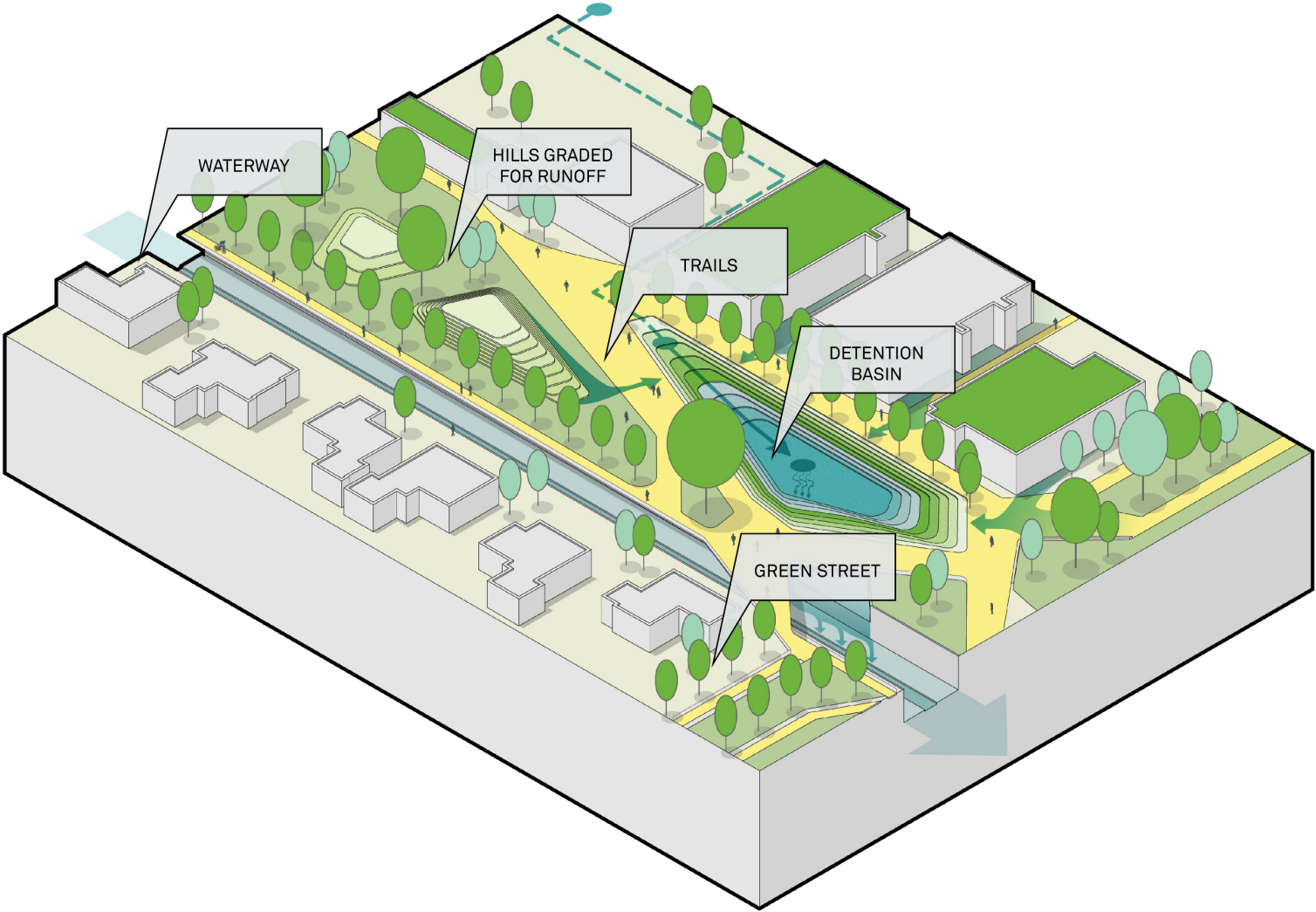


BENEFITS PER ACRE

For each of the 131 acres of **Housing** opportunities identified we may expect the following benefits per acre

WATER	0.5 acres
	New or Enhanced Permeable Paving
	3,500 gallons
	Additional Stormwater Capture from planting
AIR	10 trees
	10.2 tons
	Carbon Sequestration from Planting and Trees
	0.3 tons
HABITAT	Additional Carbon Avoided
	8.8 pounds
	Additional Pollutant Removal
	0.1 acres
	New/Enhanced Ecological Habitat
	0.11 acres
	New / Enhanced Tree Canopy
COMMUNITY	0.1 acres
	New / Enhanced Open Space
	0.2 miles
	Community Connections

STORMWATER BASINS



BENEFITS PER ACRE

For each of the 1,185 acres of **Stormwater Basin** opportunities identified we may expect the following benefits per acre

WATER	0.7 acres New or Enhanced Permeable Paving
	8,755 gallons Additional Stormwater Capture from planting
	74,946 gallons Additional Stormwater Capture from infiltration
AIR	25 trees
	27.7 tons Carbon Sequestration from Planting and Trees
	0.7 tons Additional Carbon Avoided
HABITAT	21.9 pounds Additional Pollutant Removal
	0.5 acres New/Enhanced Ecological Habitat
	0. acres New / Enhanced Tree Canopy
COMMUNITY	0.3 acres New / Enhanced Open Space
	0.1 miles Community Connections

UPDATED SUSTAINABILITY METRICS

THE PLAN WILL PROVIDE

17.5 SQUARE MILES
OF NEW + ENHANCED SPACES



EQUIVALENT TO
3 GRIFFITH PARKS

1.5 MILLION PEOPLE
WITH ACCESS TO NEW + ENHANCED SPACES



EQUIVALENT TO
THE POPULATION OF SAN DIEGO

625k DISADVANTAGED COMMUNITIES
WITH ACCESS TO NEW + ENHANCED SPACES



EQUIVALENT TO
THE POPULATION OF DETROIT



800 SQUARE MILES

Mapping the Upper LA River Story

**STUDIO-
MLA**

JEAN YANG, ASSOCIATE, STUDIO-MLA

**jean@studio-mla.com
213 807 8845**

