



# Gas Map

Katie Kyzer, GISP

GIS Asset Data & Analytics

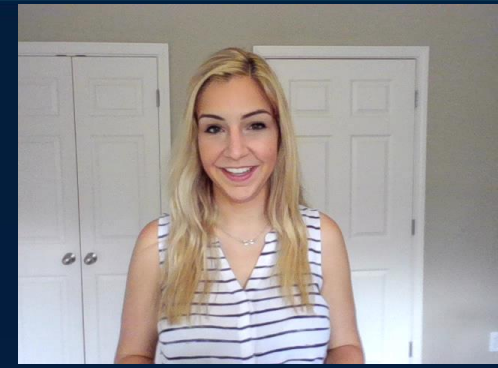
Southern Company Gas





- Southern Company Gas is a wholly owned subsidiary of Atlanta-based Southern Company
- We serve approximately 4.3 million natural gas utility customers through regulated distribution companies
- Our local distribution companies include Atlanta Gas Light, Virginia Natural Gas, Chattanooga Gas Company, and Nicor Gas (Illinois)

# GIS Tools for Field Resources



- Existing GIS tools are either browser-based or desktop applications that can be viewed offline
- Field resources rely on laptops inside their trucks – no mobile device options available
- GIS tools need to be secure enough for internal use, but flexible enough for external use

# What is Gas Map?



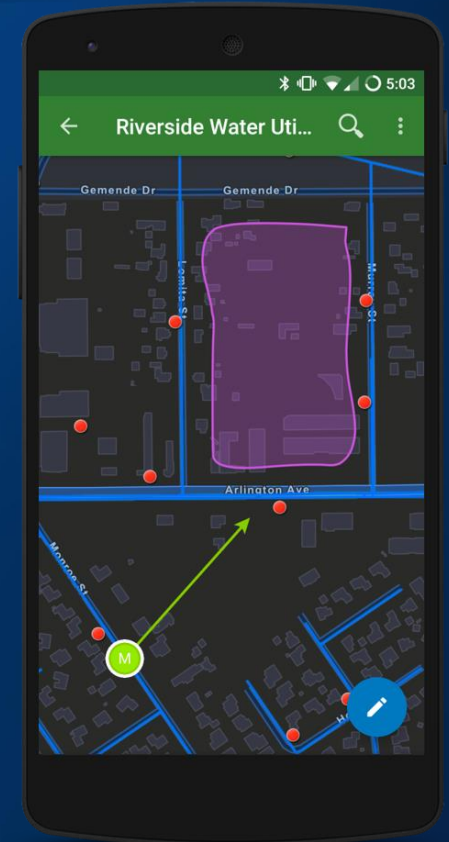
- Gas Map is a first-of-its-kind mobile resource for field operations at Southern Company Gas
- Users can view a web map showing gas facilities from the convenience of their phone or tablet via ArcGIS Explorer
- Includes: Gas Main, Casings, Fittings, Valves, Stations, Retired Main, Flow Direction, Service Centers, Municipal Boundaries, etc.

# Gas Map Advantages and Limitations

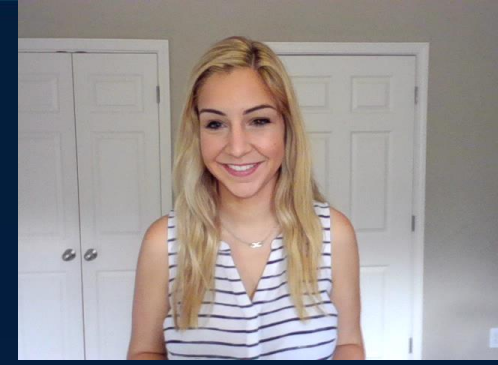


- Other GIS tools require a laptop and are too complex to fit into a mobile application
- Gas Map does not include access to service cards, source records, or tracing
- Users appreciate the convenience of being able to check GIS location data without having to return to their trucks

## ArcGIS Explorer Example:



# Why ArcGIS Explorer



- All ArcGIS Online web maps are automatically accessible via the ArcGIS Explorer app
- Explorer makes it easy to zoom to your current location or zoom to another location based on layer attributes (e.g. station name, ID)
- Gas Map utilizes the default configurations, no coding needed
- No wifi needed – Explorer can run on existing mobile data





# Damage Prevention



- Gas map makes data verification convenient – no need to return to the truck or the office
- Long term: Gas Map will be customized for different departments and project-based contractors
- Layers, symbols, and pop-up boxes can be customized



# Submitting Map Updates



- Explorer allows any user, regardless of role or type, to create a red line markup on a map
- Users can then “Share” that layer file or screenshot with anyone via email or text
- Markups are visible only to the user who creates them unless they share the layer file or screenshot

# Gateway to Survey 123



- Any Explorer map can serve as a gateway into Survey 123 so that field parameters can be passed directly into traditional reports
- Use a custom expression in the pop-up for the layer you want to pass the parameter from. For Example:  
`arcgis-survey123://?portalUrl=INSERT HERE&itemid=INSERT HERE&field:FIELD NAME={FIELD NAME IN EXPLORER}`
- Passing info directly from Explorer to Survey 123
  - Prevents human error
  - Makes it easier for users entering complex ID codes



# Training



The following training guides were made available to field resources:

- How to request access to ArcGIS Online
- Step-by-step workflow for accessing Gas Map via ArcGIS Explorer and submitting map updates through the app
- Training video for signing in, finding the map, and viewing gas facility attributes

