

# ArcGIS Solutions for Public Safety: An Overview

Presenters: Lindsay Thomas and Walt Potts

Additional Experts: Jeremiah Lindemann and Chris Delaney



# Agenda

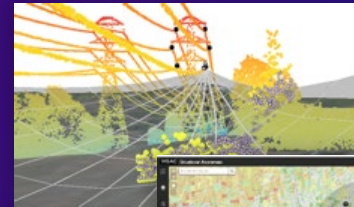
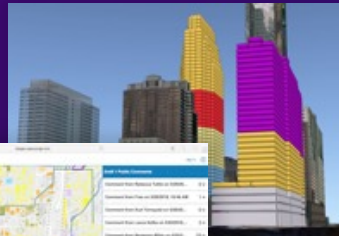
- 40 minutes of presentation
  - ArcGIS Solutions
  - Demonstrations
    - Police Transparency
    - Fire Incident Dashboard
    - Damage Assessment
  - Closing
- 15 minutes of questions answered live
- Please use the question and answer panel for questions

# ArcGIS Solutions | Industry-Specific Maps and Apps

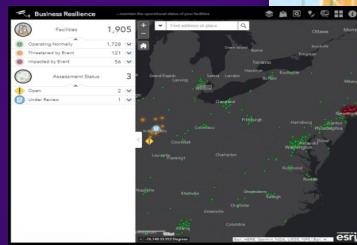
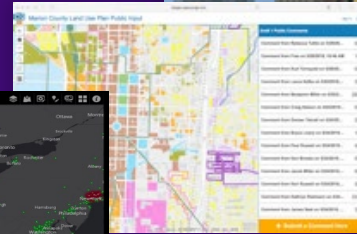
## Intersecting Business and Technology

- Extensive capabilities
- Developed with community
- Come with ArcGIS
- Fully supported

State & Local Government



Utilities & Telecommunications



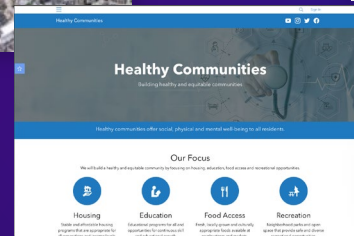
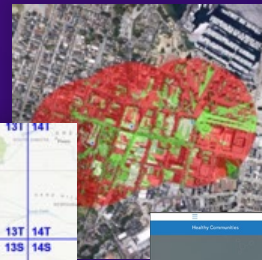
Business



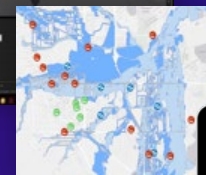
Public Safety



Defense



Health & Human Services



Conservation



Tools  
Data Management  
Apps  
Understand  
Maps  
Performance  
Dashboards  
Engage  
Add-ins  
Operational Systems

Rapidly Delivering Value . . .  
. . . Implemented by Users, Partners, and Esri



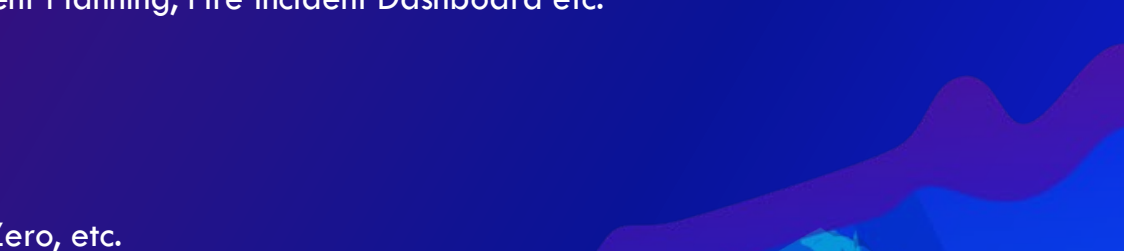
# ArcGIS Solutions

## Mission

- **Solve common business needs**
  - Integrated workflows, focused maps and apps....
- **Leverage your investment in location-based data and ArcGIS**
  - Roadmap for standard capabilities, improve service delivery, expand reach, innovation....
- **Stay current and avoid legacy technology**
  - Leverage new ArcGIS offerings, maximize available resources, focus on complex or unique problems....
- **Work collaboratively with community**
  - Best practices, industry tradecraft....



# Helping Organizations

- **Manage authoritative location-based**
    - Address Data Management (computed aided dispatch), Administrative Area Data Management, Road Closures, Fire Hydrant Inspections, etc.
  - **Understand community conditions and create understanding**
    - Crime Analysis, Flood Impact Analysis, Traffic Crash Analysis, Homeless Risk Reduction, Target Hazard Analysis, etc.
  - **Deploy location-based operational systems**
    - Emergency Management Operations, Special Events Operations, Emergency Debris Reporting, Initial Damage Assessment, etc.
  - **Visualize operational and strategic performance**
    - Homeless Point-in-Time Counts, Daily Activity Dashboard, Pre-Incident Planning, Fire Incident Dashboard etc.
  - **Engage the public** (when appropriate)
    - Police Transparency, Homeless Outreach, Opioid Epidemic, Vision Zero, etc.
- 

# ArcGIS Solutions for Public Safety

Law Enforcement, Fire Service, Emergency Management

ArcGIS Solutions Home My Solutions Resources

Search Solutions Relevance Filter

Filters Solutions: 34 Filters Industry: Public Safety X Clear filters

New Version Available

Industries

- Business
- Conservation
- Defense
- Health and Human Services
- Public Safety
  - Emergency Management
  - Fire Service
  - Law Enforcement
- State and Local Government
- Telecommunications
- Utilities

Initiatives

- Coronavirus (COVID-19)
- Racial Equity

Road Closures

Flood Impact Analysis

Address Data Management

3D Basemaps

Special Event Operations

Address Field Operations

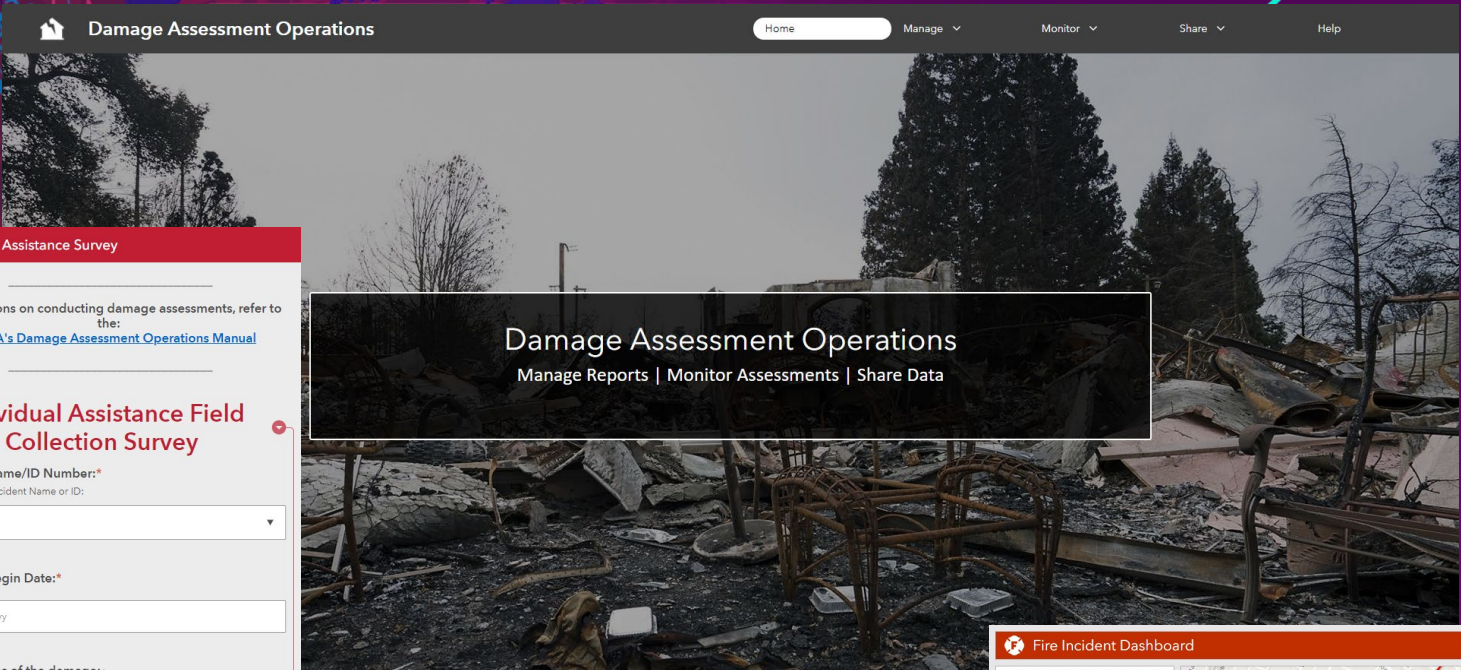
Crime Analysis

Damage Assessment



# Show Me!

## Walt Potts



**Individual Assistance Survey**

For questions on conducting damage assessments, refer to the: [FEMA's Damage Assessment Operations Manual](#)

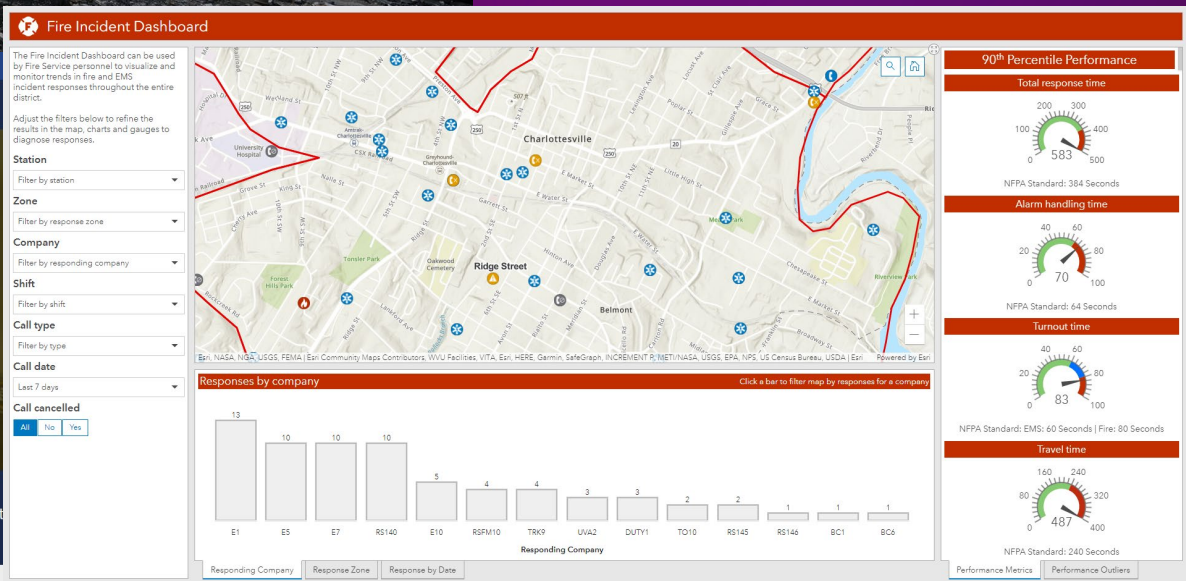
**Individual Assistance Field Collection Survey**

Incident Name/ID Number:\*  
 Choose the incident Name or ID:

Incident Begin Date:\*  
 m/d/yyyy

**Police Transparency**  
 Increase trust and legitimacy in the community

Serving with greater transparency, a representative workforce and strategies developed with t



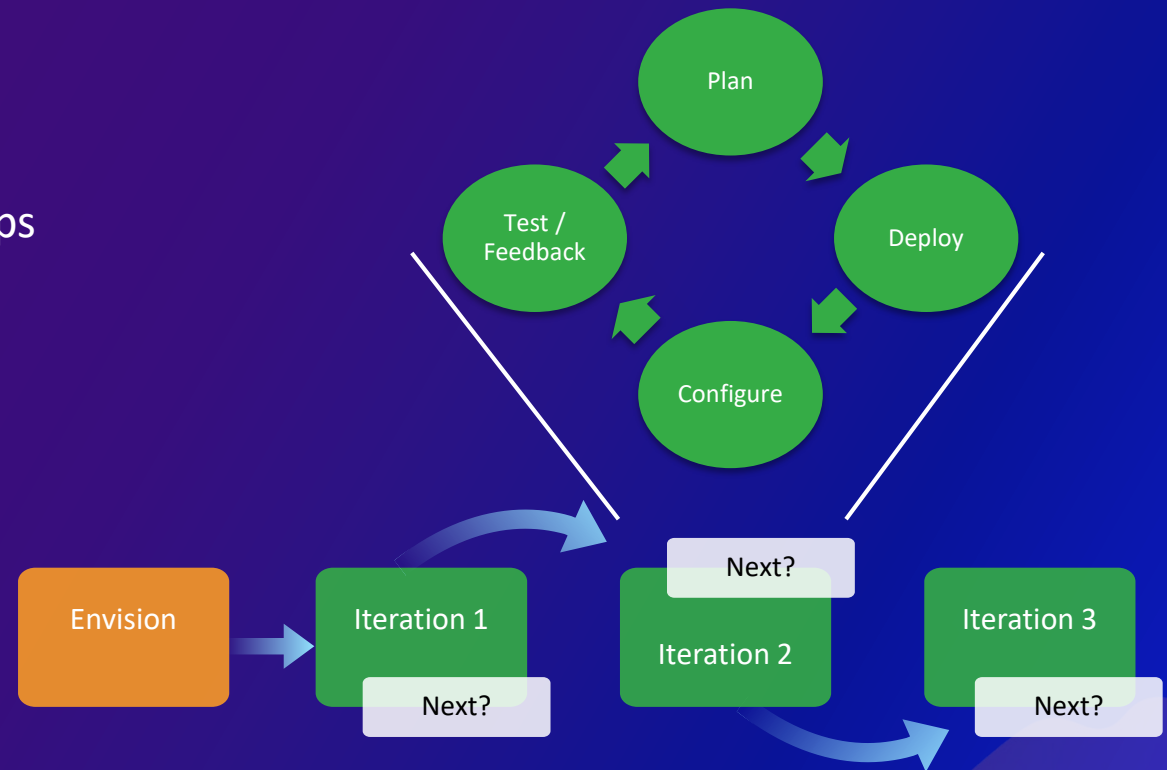
**Message from the Chief**

On behalf of our department, thank you for the privilege of serving you. As part of our efforts to improve transparency to the community and maintain trust with the citizens we serve, this site is intended to help citizens become

# How do I get started?

Leverage solution offerings to maximize technical expertise and minimize deployment time

- Deploy quick wins
  - Configure your mapping platform
  - Align with strategic business needs
  - Implement one or more focused maps and apps
  - Organize your data
  - Iterate....

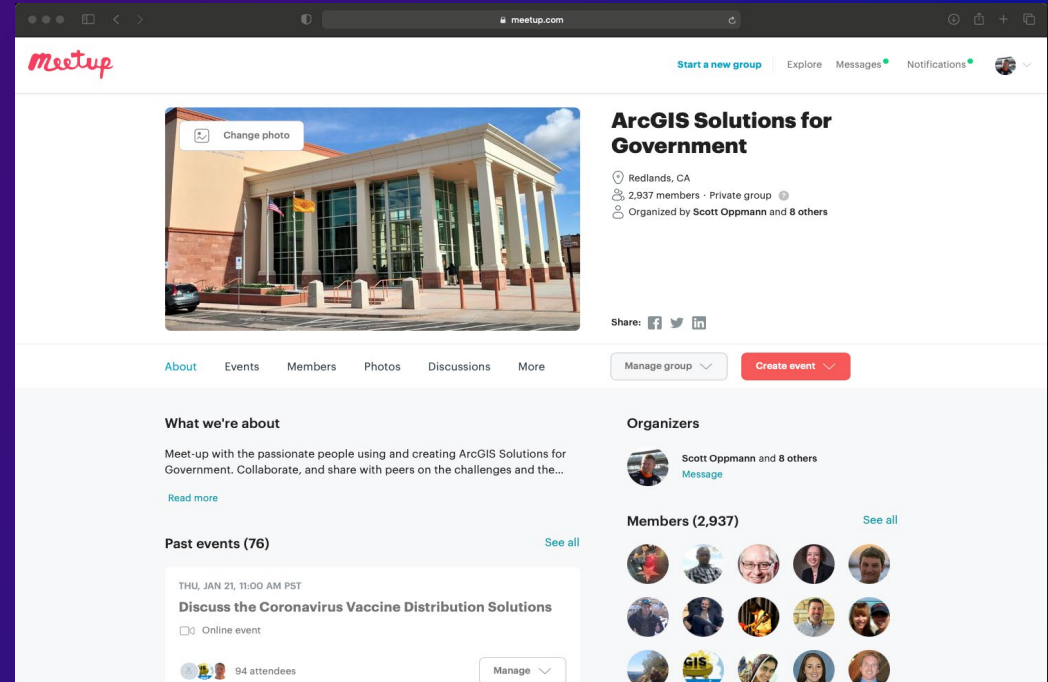
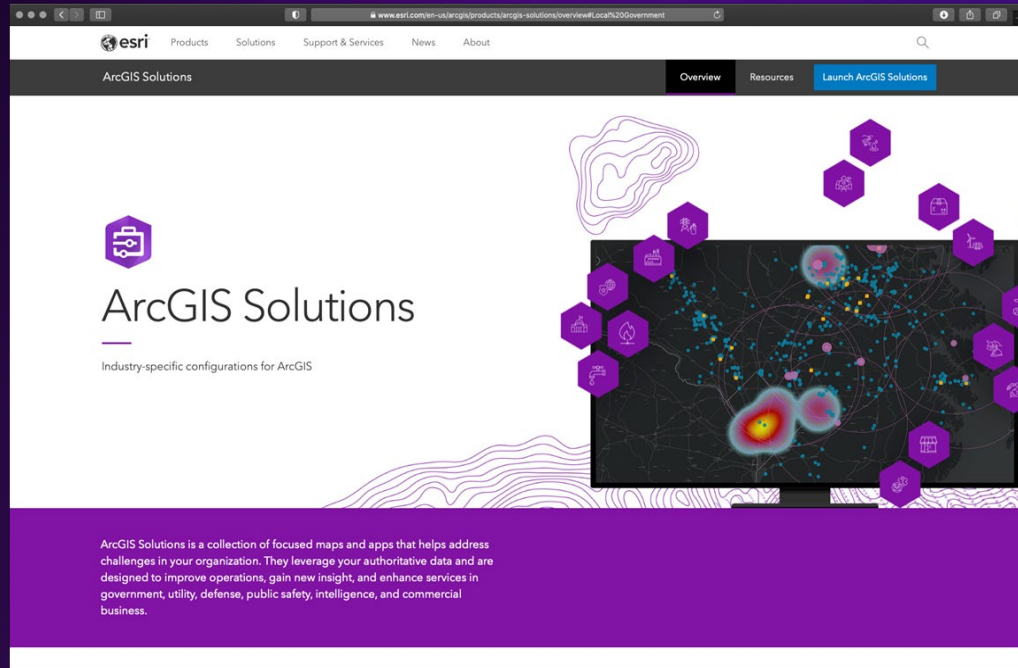


...embrace an agile implementation approach



# The Community

It's not just about the technology



# Road Ahead

- Summer Release (available now)
  - Damage Assessment
  - Emergency Debris Management
  - Fire Incident Dashboard
  - Emergency Management Operations
- Future releases
  - Fire Accreditation
  - Community Risk Reduction
  - Next Gen. CompSTAT
  - Mental Health and Addiction Outreach
  - Fire Pre-Incident Planning



# Key Takeaways

- ArcGIS includes a rich set of solutions you can leverage
- Promote modern patterns and ArcGIS capabilities
- Work collaboratively with community
- Enable you to solve common business problems
- Deploying ArcGIS Solutions has never been easier





# Special Interest Group meetings Thursday July 15, 2021

- Humanitarian 6:45 AM – 7:45 AM
- Fire Rescue and EMS 8:00 AM – 9:00 AM
- Disaster and Emergency Management 9:15 AM – 10:15 AM
- Wildland Fire 10:30 AM – 11:30 AM
- Corporate Security and Safety 10:30 AM – 11:30 AM
- Law Enforcement 1:00 PM – 2:00 PM
- Homeland Security 2:15 PM – 3:15 PM
- Emergency Communications 3:30 PM – 4:30 PM

*....all meetings are in Pacific Time*

# Thank you

Be innovative, aware, and know you are not alone

Walter Potts, Principal Product Engineer  
ArcGIS Solutions – Public Safety

Lindsay Thomas, Team Lead  
ArcGIS Solutions – Public Safety

 <http://solutions.arcgis.com/>

 <http://meetup.com/ArcGIS-for-Government/>

*Please use the survey link below to share your feedback on this session*

The background is a vibrant, abstract composition. It features a gradient of colors from deep purple and blue on the left to bright pink and orange on the right. There are several overlapping, organic shapes and patterns, including a prominent yellow curved line on the right side and a textured, grid-like pattern in the upper right. The overall aesthetic is modern and digital.

We want your feedback

Click on the [Session Survey link](#)  
below this video window





esri®

THE  
SCIENCE  
OF  
WHERE®