

ArcGIS Solutions for Conservation and Natural Resources: An Overview

Chris Buscaglia

Lauren Dreyfuss



esri

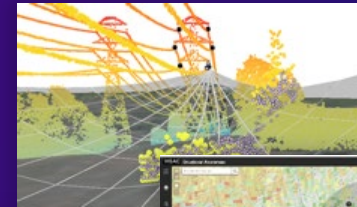
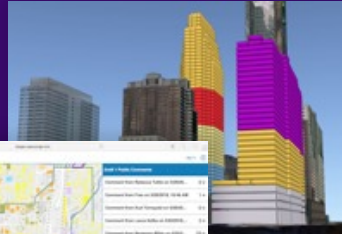
THE
SCIENCE
OF
WHERE®

ArcGIS Solutions | Industry-Specific Maps and Apps

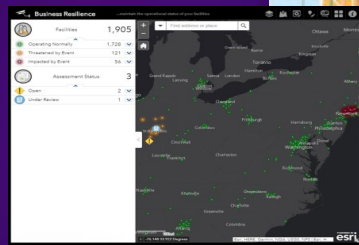
Intersecting Business and Technology

- Extensive capabilities
- Developed with community
- Come with ArcGIS
- Fully supported

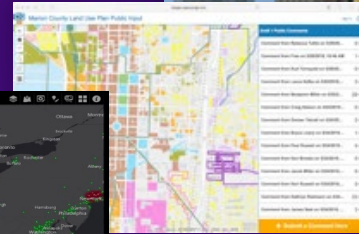
State & Local Government



Utilities & Telecommunications



Business



Tools
Data Management



Public Safety

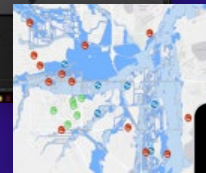
Apps
Understand
Maps
Operational Systems



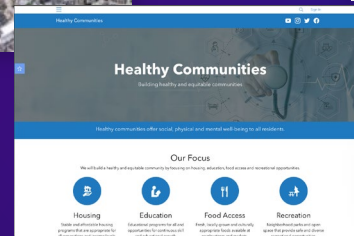
Defense



Conservation



Performance
Dashboards
Engage



Health & Human Services



Rapidly Delivering Value . . .
. . . Implemented by Users, Partners, and Esri

ArcGIS Solutions

Mission

- **Solve common business needs**
 - Integrated workflows, focused maps and apps....
- **Leverage your investment in location-based data and ArcGIS**
 - Roadmap for standard capabilities, improve service delivery, expand reach, innovation....
- **Stay current and avoid legacy technology**
 - Leverage new ArcGIS offerings, maximize available resources, focus on complex or unique problems....
- **Work collaboratively with community**
 - Best practices, industry tradecraft....



Conservation Solutions

Improving conservation operations and enhancing ecosystem services for the public

- Conservation Outreach
- Protection Operations
- Wildlife Management
- Conservation Easement Monitoring
- Wildlife Photo Survey



Natural Resource Solutions

Conserve and manage natural resources, promote outdoor recreational opportunities, and ensure sustainable commercial uses of natural resources.

- Dam Safety
- Environmental Analysis
- Recreation Outreach
- Community Science



Business Value

- Increase participation in outdoor (and other revenue-driven) activities
- Increase value of license and permit related data holdings
- Manage conservation easement programs
- Improve process required for environmental project review
- Increase communication between agencies
- Mitigate human/wildlife conflict
- Reduce risk associated with safety programs
- Evaluate management strategies in order to improve operations



Water Resource Locator

locate water

King's Crossing
Locate Water

Map navigation controls: Home, Location, Search, Refresh, Close.

Conservation Easement Survey

- Property Information**: Property location, Property name, Property description, Location details, Property size (acres), Inspection date, Inspection year, Acquired date, Expiration date.
- Conservation Easement Inspection**: Current Uses (Agriculture, Pasture/Ranchland, Ecosystem/Species preservation, etc.), Observation Points, Compliance.
- Additional Property Photos**: Capture property photo.
- Signatures**: Inspector (Chris Buhler), Address, Phone, Other staff present, Inspection time, Date, Current Owner or Property Manager (John Bohl).

Angler Catch Survey

First Name*

Last Name*

Date of Birth*

License Number*

When did you go fishing?*

Where did you go fishing?*

Please Select:

I would recommend fishing here.

Strongly disagree Disagree Neutral Agree Strongly agree

Why would/wouldn't you recommend fishing here?

Clopper Lake

Map navigation: Home, Location, Search, Refresh, Close.

Map data: Esri, NASA, NGA, USGS, FEMA | Esri Community Map

Locate Water Resource

Search for an address or locate on map

Show results within 7 Miles

Select filters to apply

Water Resource Location

Approximate Distance: 2.75 mi

Boat Launch

Clopper Lake

39148, 77232

Open Today, Call 301-924-2127 for hours

Managed by Maryland Department of Natural Resources - Park Service

11950 Clopper Road, Gaithersburg, MD 20878
301-924-2127

[Website](#)

No Access Fee

No Boat Ramps Available
Boat Rental Available
Courtesy Dock Available
22 Parking Spaces in a Lighted Parking Lot

Fish in the Area
Atlantic Butterfish, Bigeye Scud, Bowfin, Bull Shark, Channel Catfish, Cockerfish, Goldfish, Longnose Gars, Rainbow Trout, Southern Striped, Warmouth.

See Website for Fishing Rules and Regulations

Need a Fishing License?
[Get one Here!](#)

Amenities:

Share Your Catch

Tell us about your catch, share fishing hints, and provide tips to fellow anglers.

[Take angler survey](#)

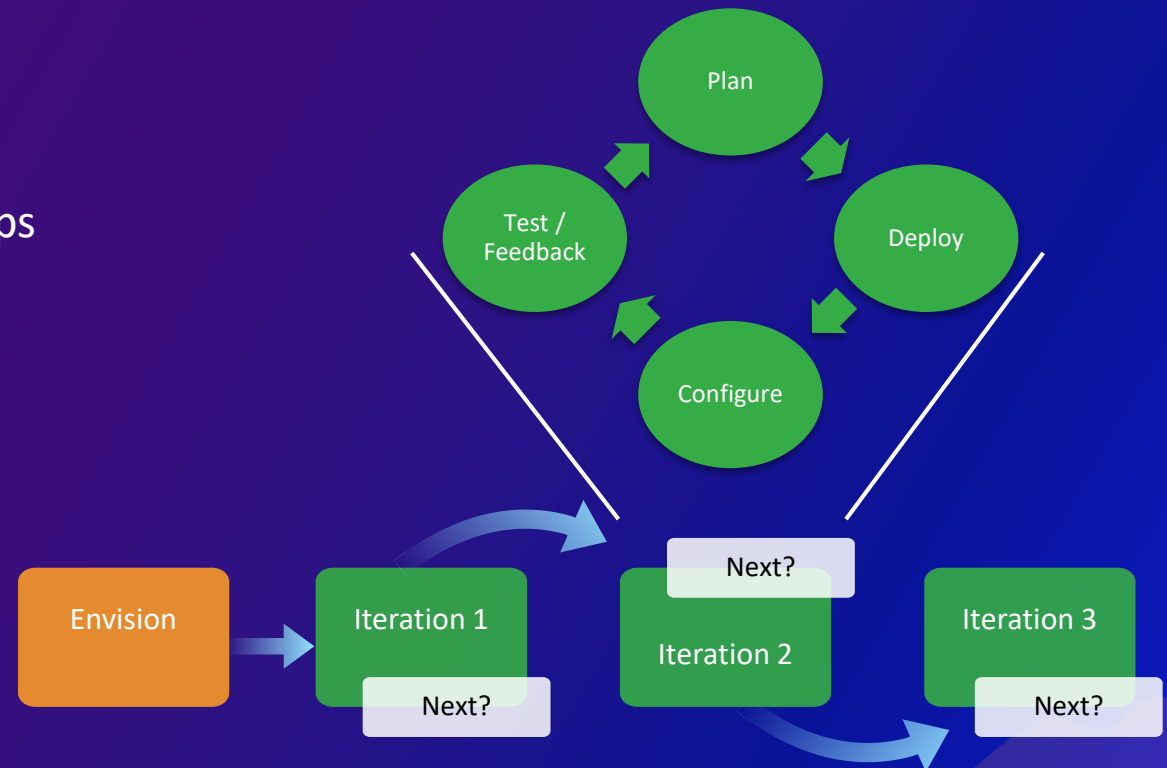
Show Me!

Lauren Dreyfuss

How do I get started?

Leverage solution offerings to maximize technical expertise and minimize deployment time

- Deploy quick wins
 - Configure your mapping platform
 - Align with strategic business needs
 - Implement one or more focused maps and apps
 - Organize your data
 - Iterate....



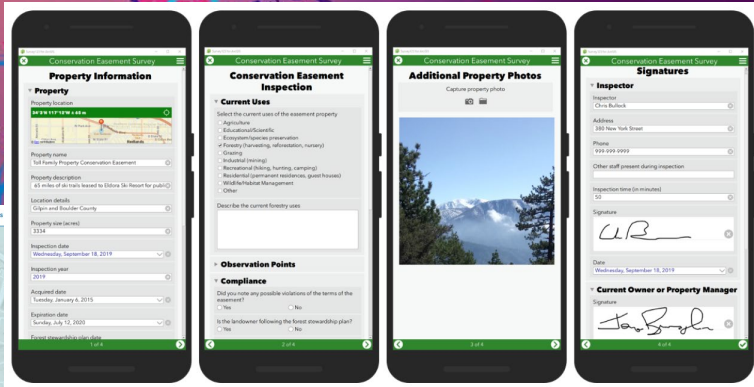
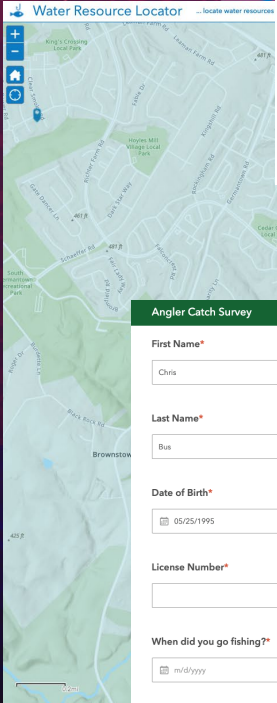
...embrace an agile implementation approach

The Road Ahead

Post UC

- Park Infrastructure Management Solution
- Recreation Outreach updates
 - Trail Locator updates (new app config.)
 - Additional License analysis
 - Recreation Hub Initiative improvements
- Forest Timber Management
- Dam Safety updates
- Environmental Analysis updates





Angler Catch Survey

First Name*

Last Name*

Date of Birth*

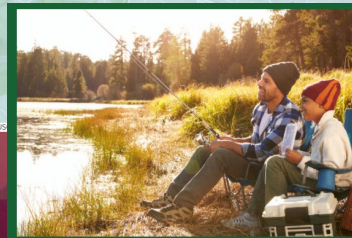
License Number*

When did you go fishing?*

Where did you go fishing?*

I would recommend fishing here.
 Strongly disagree Disagree Neutral Agree Strongly agree

Why would/wouldn't you recommend fishing here?



Share Your Catch
 Tell us about your catch, share fishing hints, and provide tips to fellow anglers.

[Take angler survey](#)

Locate Water Resource

Search for an address or locate on map

Show results within 7 Miles
 15

Select filters to apply v

Water Resource Location

Approximate Distance: 2.75 mi

Clopper Lake
 301-448-77232
 Open Today, Call 301-924-2127 for hours

Managed by Maryland Department of Natural Resources
 - Park Service

11950 Clopper Road, Gaithersburg, MD
 20878
 301-924-2127
[Website](#)

No Access Fee
 No Boat Ramps Available
 Boat Rentals Available
 Courtesy Dock Available
 22 Parking Spaces in a Lighted Parking Lot

Fish in the Area
 Atlantic Butterfish, Bigeye Scud, Bowfin, Bull Shark, Channel Catfish, Cobia, Goldenfish, Longnose Gars, Rainbow Trout, Southern Striped, Warmouth.

See Website for Fishing Rules and Regulations

Need a Fishing License?
[Get one Here!](#)

Amenities:

Show Me!
 Lauren Dreyfuss

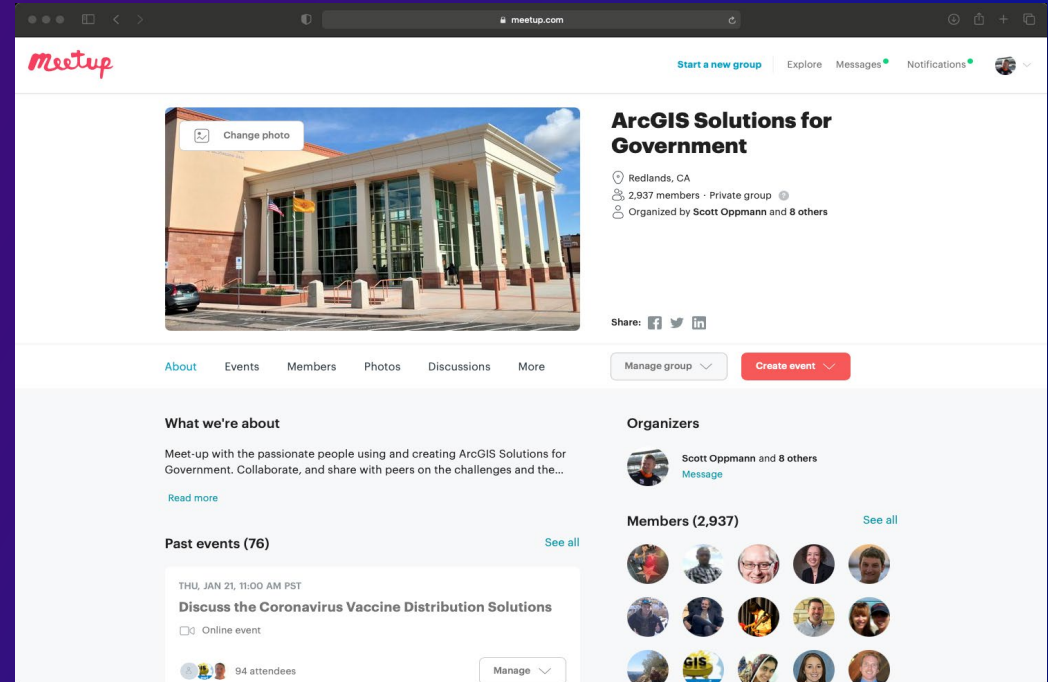
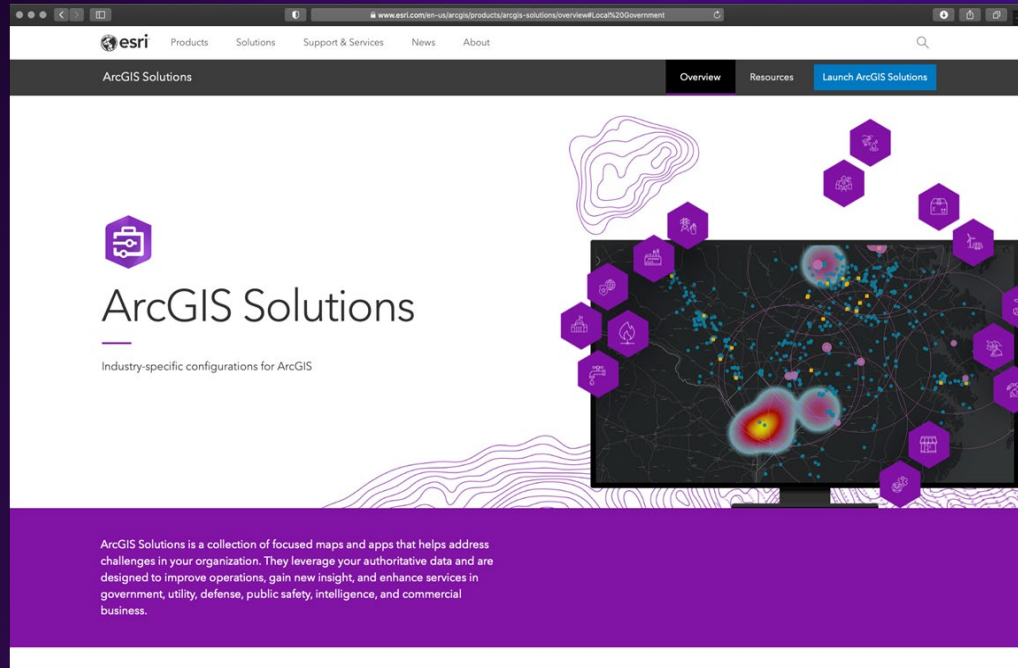
Key Takeaways

- ArcGIS includes a rich set of solutions you can leverage
- Help you increase participation in revenue-driven activities
- Increase communication between agencies
- Built collaboratively with community
- Deploying ArcGIS Solutions has never been easier



The Community

It's not just about the technology



Thank you

Be innovative, aware, and know you are not alone

Lauren Dreyfuss, Product Engineer
ArcGIS Solutions

Chris Buscaglia, Team Lead
State and Local Government Solutions

 <http://solutions.arcgis.com/>

 <http://meetup.com/ArcGIS-for-Government/>

Please use the survey link below to share your feedback on this session



esri®

THE
SCIENCE
OF
WHERE®