



## BP Implemented Esri Arc Indoors for COVID Contact Tracing



---

# Agenda / Schedule

- Introductions
- Business Case
- Technical Solution
- Business Impact
- Take Aways

# Introductions – Who is LOGIC?



## Enterprise GIS Services

- GIS strategy assessments / roadmaps, planning, design
- Custom Esri Web AppBuilder Widgets
- Enterprise GIS implementations
- Fit-for-purpose business solutions
- Integration with line of business systems
- Knowledge transfer, governance, & training
- Ongoing support, maintenance, upgrades

---

# Introductions – Who is bp?

- bp is a global super major energy services company with interests in Solar, Hydrocarbons, Wind, and other energy markets around the globe
- Justin Piwetz:
  - Service Portfolio Owner – Geospatial and Digital Twins



# Business Case



As COVID spread globally in early 2020, BP pivoted their ongoing GIS related safety program into COVID related tracking and tracing. The effort morphed into a three-pronged business case that included safety, facility usage and COVID contact tracing.

1. **Security:** quickly identify people and their locations in the campus buildings (although access to this data is restricted)
  2. **Facility Planning:** understanding how BP's spaces (floors and areas within the floors) were being used. If low traffic areas were determined, then that area might be repurposed.
  3. **COVID Contact Tracing:** identify potential contacts upon receiving report of COVID positive cases
- NOTE: While the original intent was to also utilize Esri's Space Planner functionality, BP chose a different technology for this use case (Executive Decision, not Technical)

# Technical Solution

## Esri

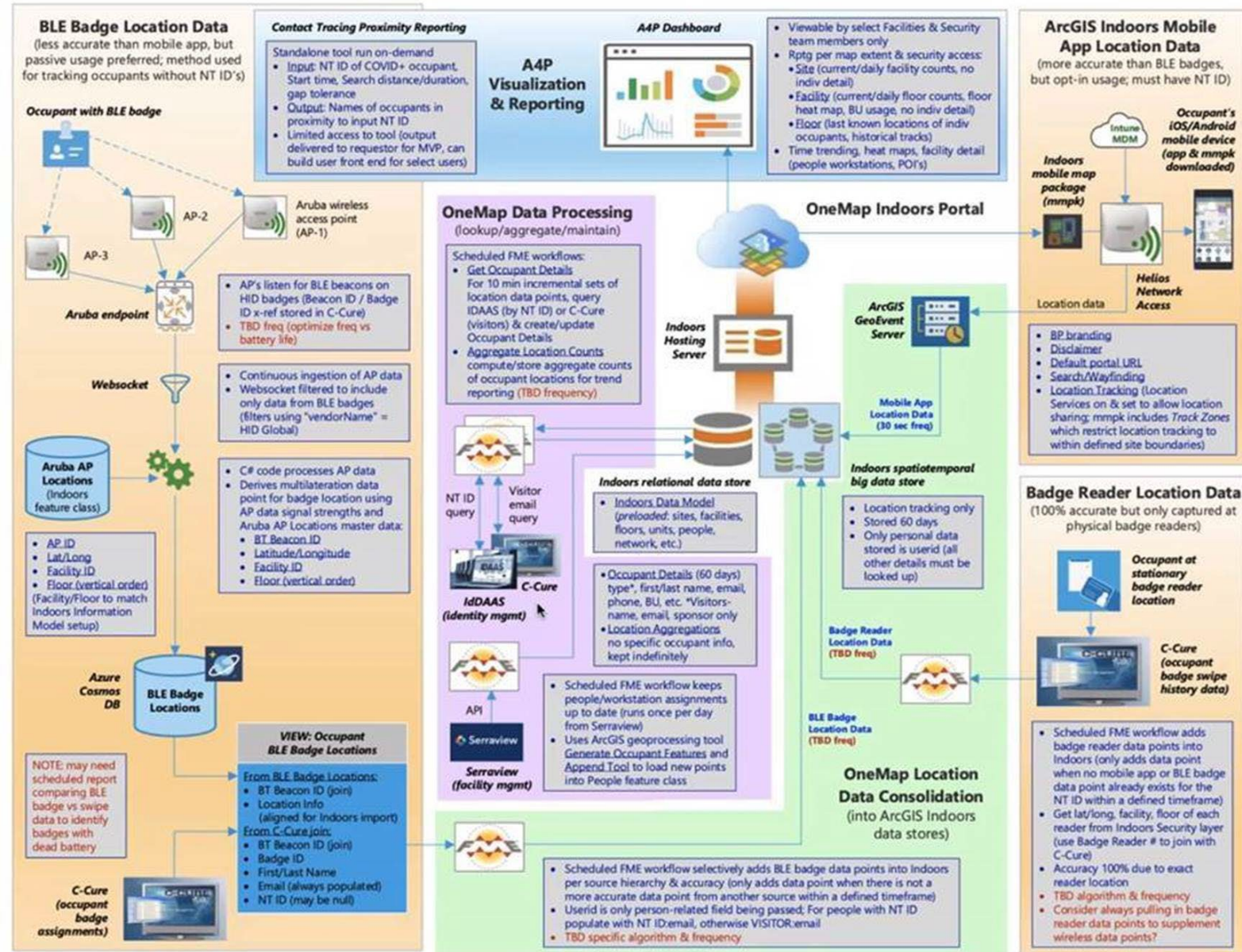
- ArcGIS Indoors
- ArcGIS Enterprise
  - Maps & Apps
  - Dashboards

## Safe Software

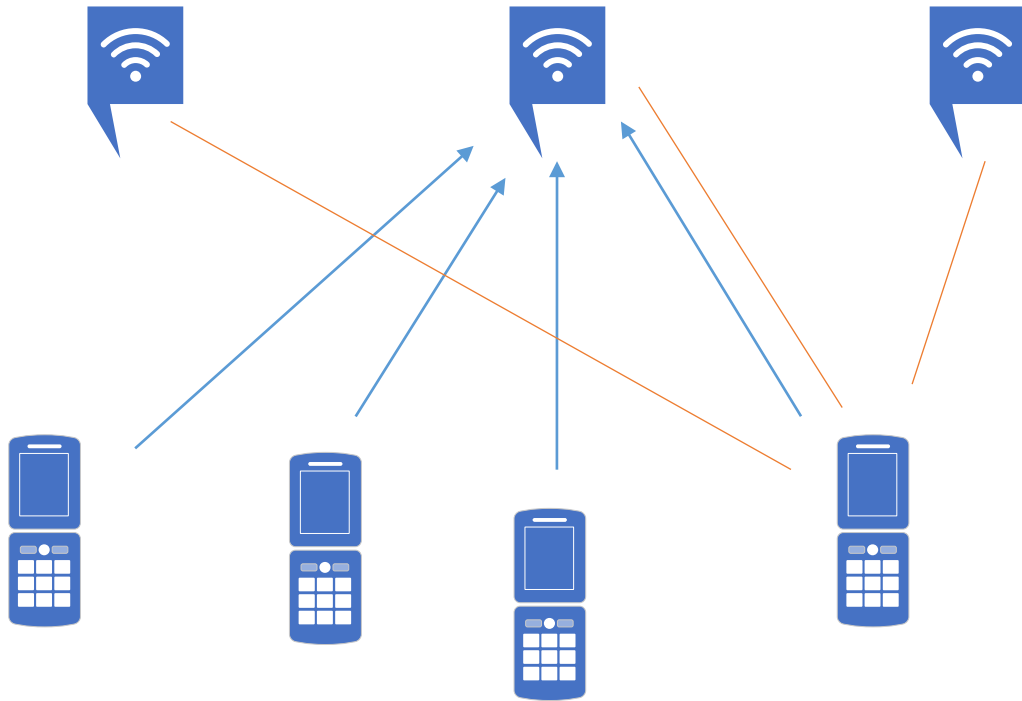
- FME
- FME Server

## Passive Location Collection

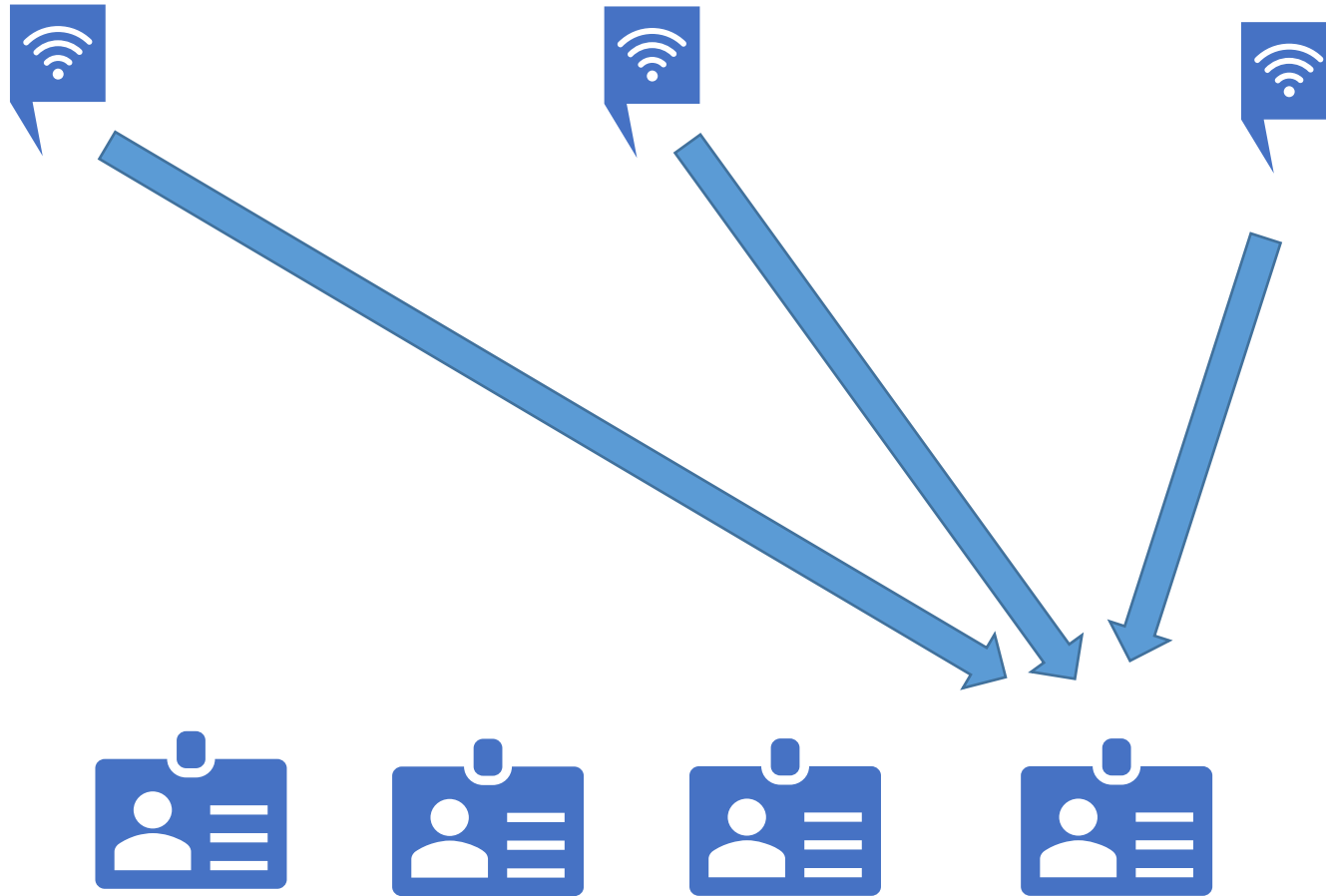
- Badge readers
- Badge swipes
- Cell phones



# Scenario 1 – Client Responsible for Location



# Scenario 2 – Cloud Responsible for Location





# Business Impact

## BP Employees

- BP could safely and responsibly integrate employees back into campus buildings while minimizing the risk of onsite infections.
- Facilities management has enhanced view of facility access and usage.
- Safety management has enhanced information to identify guest locations on campus in the event of an emergency

---

# Takeaways

- Gathering the data for use case opened the door to address other safety use cases
- A balancing act: privacy & security
  - User-identifiable information was locked down
  - Individual location data points are retained for 30 days
- Badge readers / pings require energy
  - Battery life
- Lots of “moving parts”
  - Maintaining many integration points requires ongoing effort

# Thank You!

LOGIC Solutions Group  
10375 Richmond Avenue, Suite 850  
Houston, Texas 77042  
Mitchell Atwood  
[mitchell.atwood@logicsolutionsgroup.com](mailto:mitchell.atwood@logicsolutionsgroup.com)  
Office 832.619.7885  
Mobile 832.498.5295

