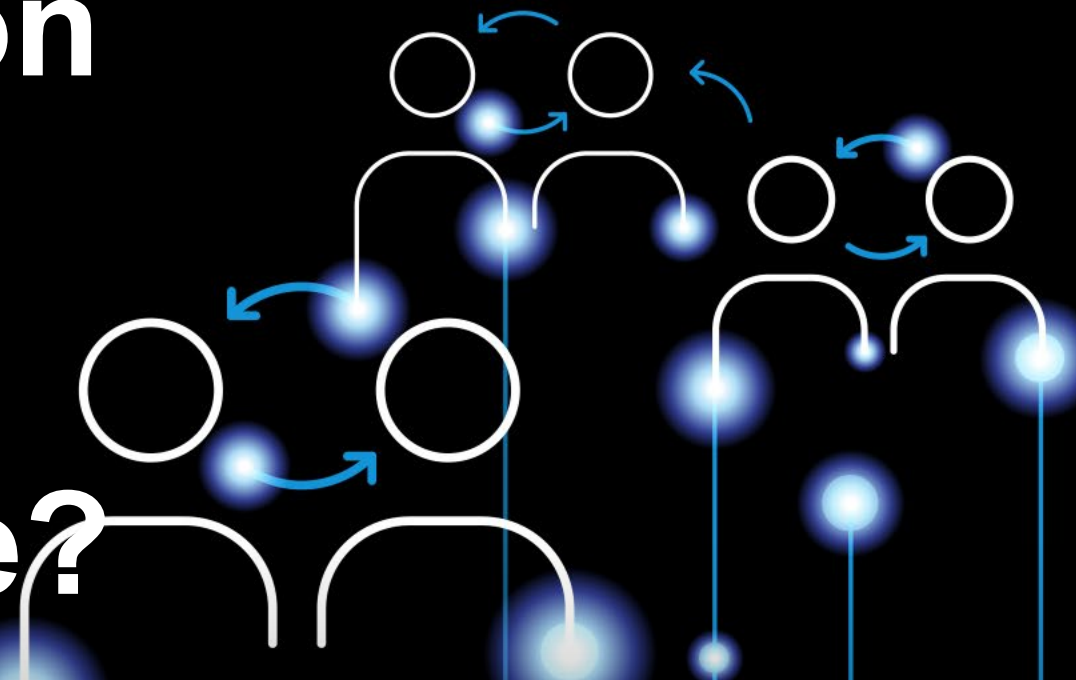


# Does Class Location Not Determine Regulated Gas Gathering Anymore?

---

May 5, 2022

presented by  
**Tad Nowicki**  
Compliance Consultant



# AGENDA

- Overview of new regulations
- Three main points:
  - Using GIS to define and document gathering (#1)
  - Class location = gathering type determination (#2)
  - Data completeness, conservative assumptions and an iterative process (#3)

## Think about your current pipeline GIS...

- Is everything is mapped?
- What is the state of critical attributes (Material, Diameter, Wall Thickness, Grade, MAOP)?

**Now let's  
continue**

**ROSEN**

empowered by technology

# OVERVIEW OF RULE

## WHAT DOES THIS RULE DO?

Regulates **ALL** onshore gas gathering pipelines

**IT IS HUGE!**

**PHMSA estimates:**

**400,000+** miles of new pipe

**500** new operators

**370** new Type C operators (~91,000 miles)

**130** new Type R operators



**ROSEN**

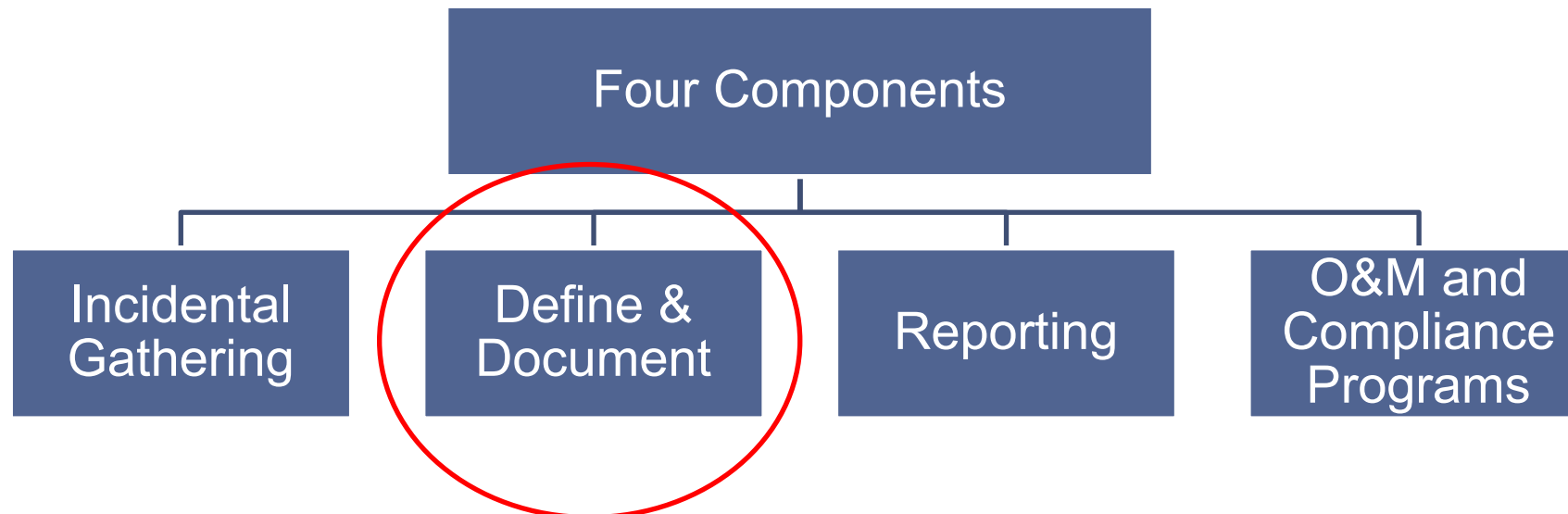
empowered by technology

# REQUIREMENTS

# REQUIREMENTS

Mandates two things:

1. Reporting for all gathering lines
2. Minimum safety requirements for large diameter, high-pressure pipelines





**ROSEN**

empowered by technology

**DEFINE AND DOCUMENT**

## DEFINE AND DOCUMENT

---

192.8 (b) – “Each operator must **determine** and maintain for the life of the pipeline, **records** documenting the **methodology** by which it calculated the **beginning and end points** of **each** onshore gathering pipeline it operates, as ... [**Type A, B, C and R**]...”

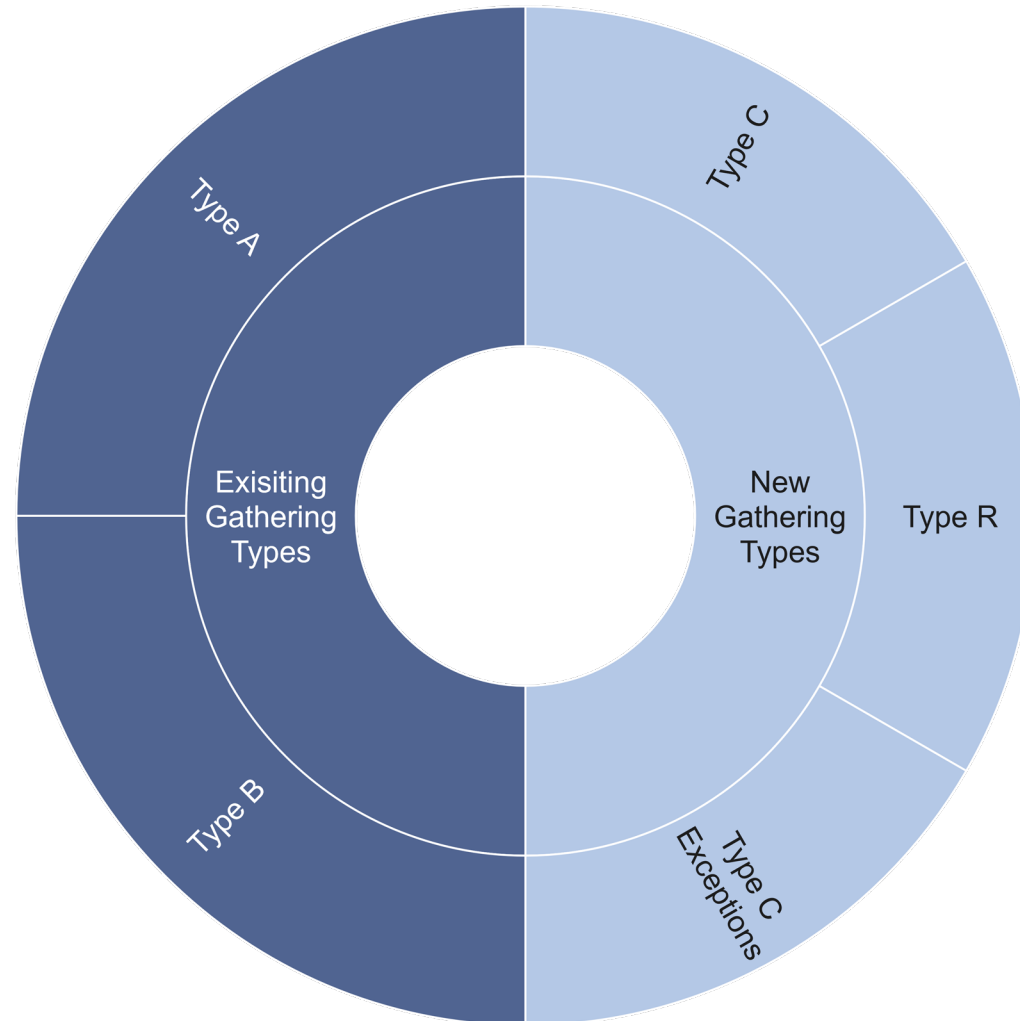
Includes three things:

- Define what a gathering line is (**Standard**)
- Document beginning and end of each gathering line (**GIS**)
- Determine and document the applicable gathering type (**GIS attributes**)

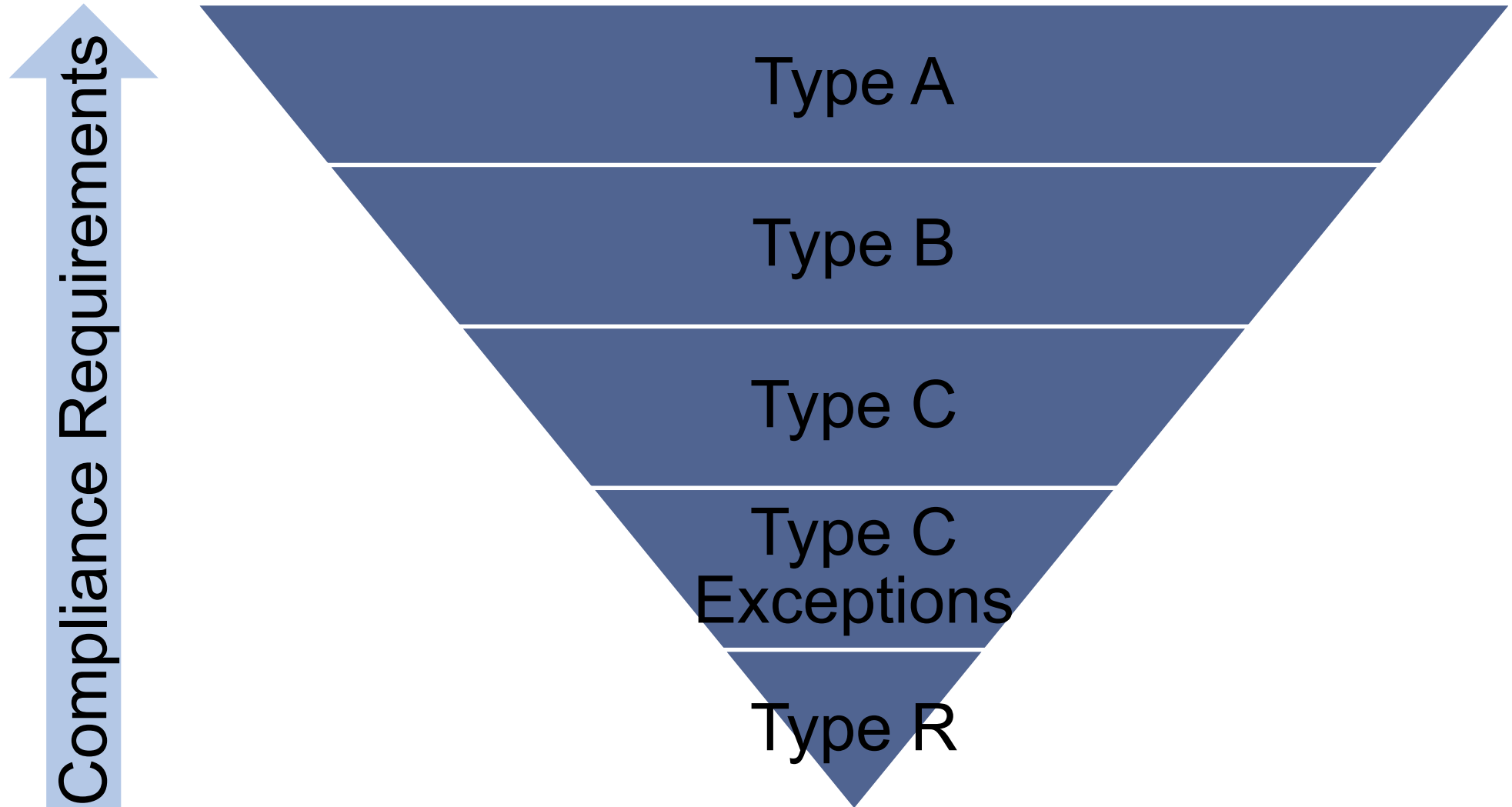
A large, stylized blue graphic consisting of a hash symbol (#) followed by the number 1, indicating a top priority or first point.

## DETERMINE GATHERING TYPE

Must determine gathering type for **every** gathering line



**SIZE OF REQUIREMENTS**



**ROSEN**

empowered by technology

**WHAT'S CHANGED WITH  
CLASS LOCATION?**

**NO LONGER KING**

~~Class Location~~



**#2**

Gathering Type Determination



Pressure Calculations

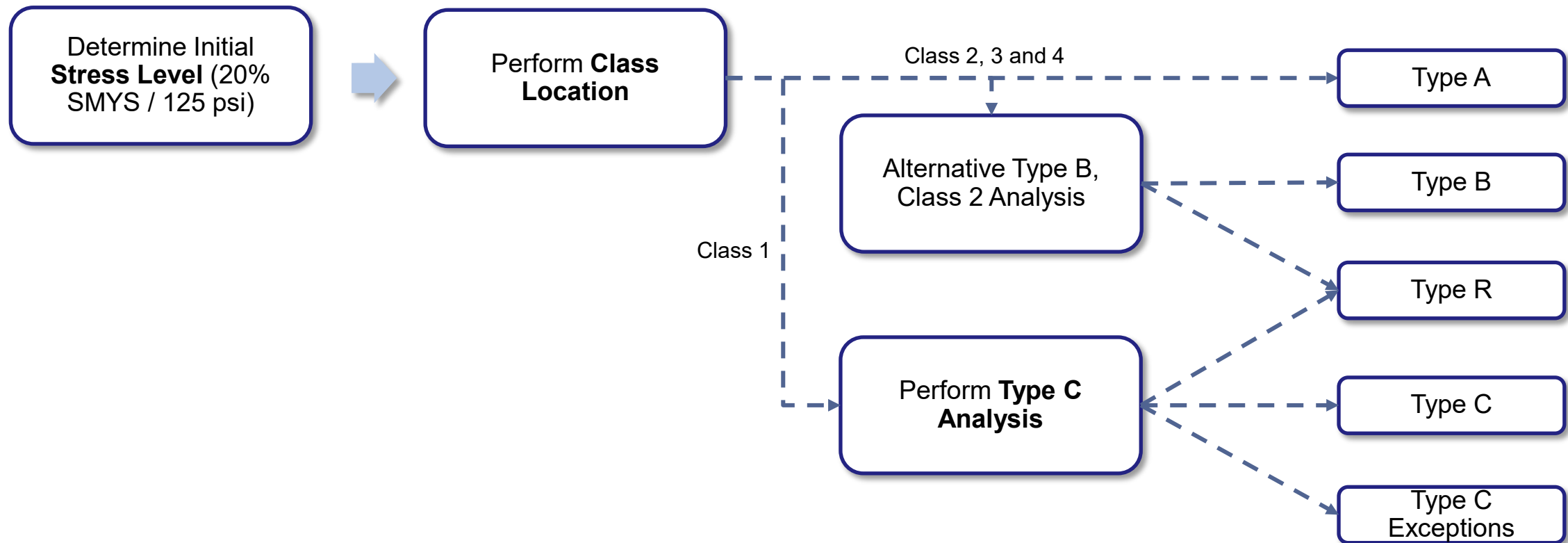


Class Location



Type C Analysis

## GATHERING TYPE DETERMINATION



# CONSERVATIVE ASSUMPTIONS & ITERATIVE PROCESS



# DATA FOR GATHERING TYPE DETERMINATION

Diameter	20+	Type B				Type C	Type A			
	16					Type C <sup>2</sup>				
	14									
	12									
10	Type R					Type R				
8										
6										
4										
3.5										
3										
2										
Class	1	2	3	4	1	2	3	4		
% SMYS	< 20%				≥ 20%					
MAOP <sup>1</sup>	≤ 125				> 125					

Pipeline data required:

- Material
- Diameter
- Wall Thickness
- Grade
- MAOP

# #3

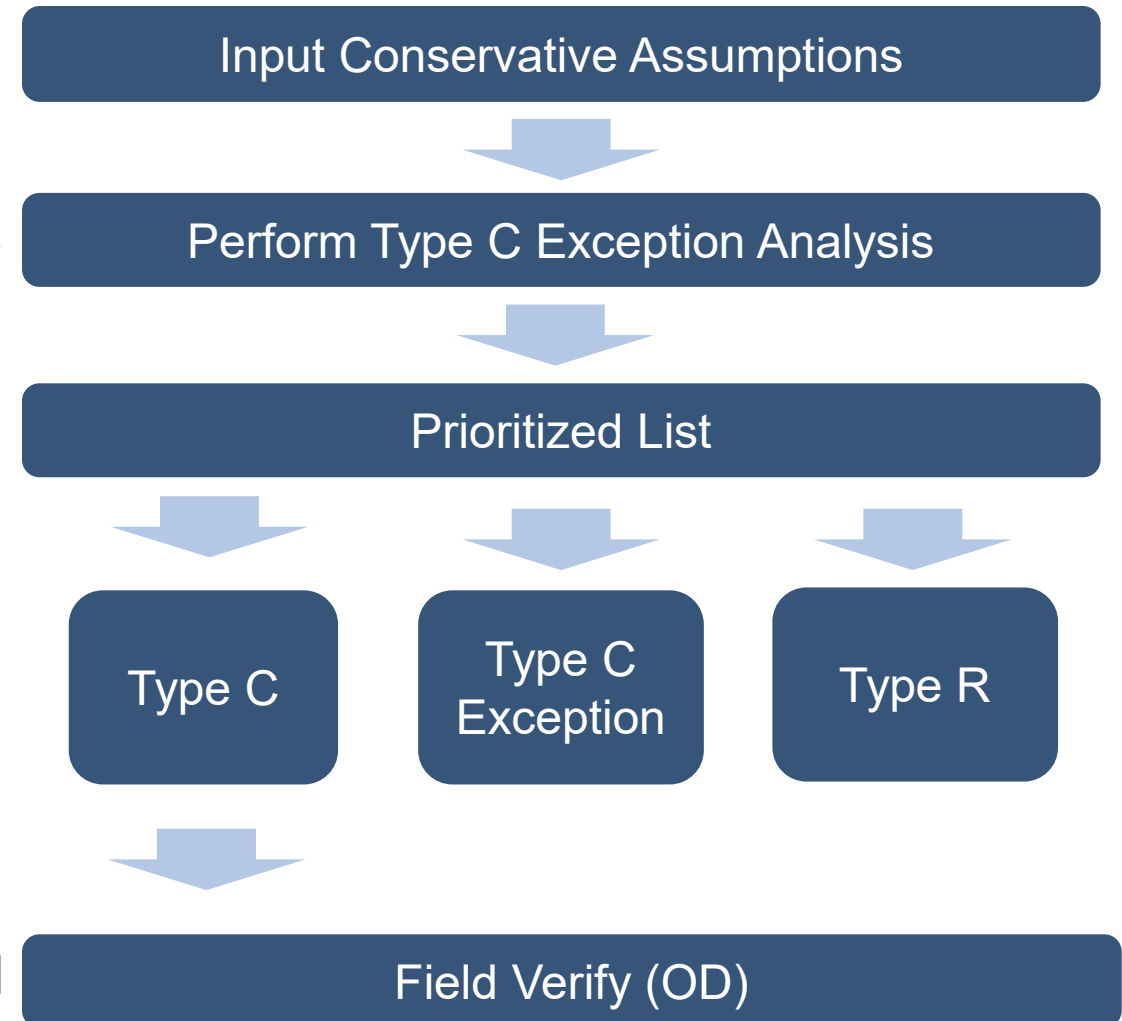
<sup>1</sup> If non-steel or unknown

<sup>2</sup> Type C, exceptions could apply

# USING AN ITERATIVE PROCESS

Use conservative assumptions  
(8.625" OD, Grade 24,000, .150 WT, Operating  
Pressure or MAOP = 20% SMYS)

# #3.1



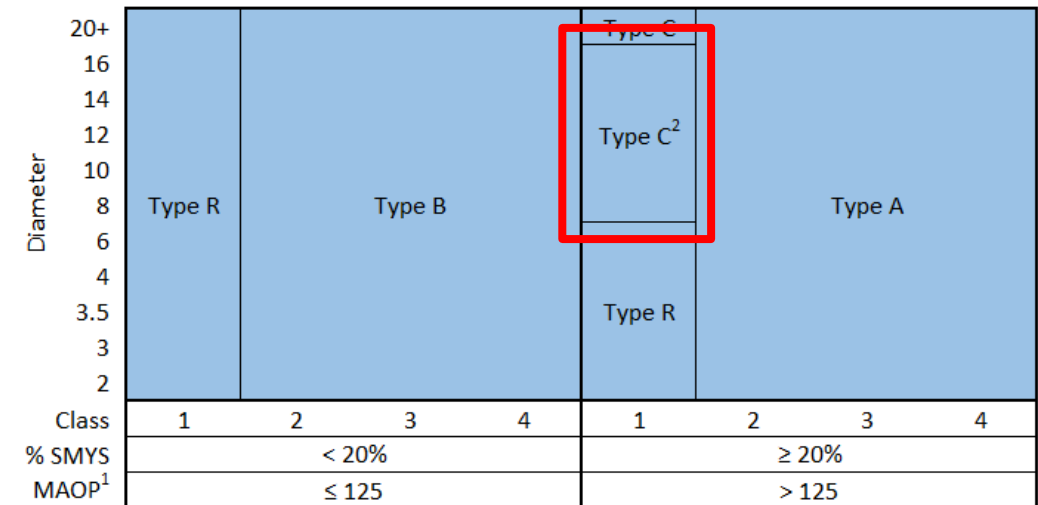
## TYPE C EXCEPTIONS

USE THEM!!!

Type C pipelines  $\leq 16"$  can have reduced requirements if "Impacted Sites" are not present

Type C Exception analysis:

Class Location + parts of MCA = new Gathering Type Determination process



<sup>1</sup> If non-steel or unknown

<sup>2</sup> Type C, exceptions could apply

**ROSEN**

empowered by technology

**DEADLINES**

# DEADLINES



# Questions.....



# LET'S STAY IN TOUCH

---



## Tad Nowicki

Compliance Consultant

Phone: 832-977-1203

Mail: [tnowicki@rosen-group.com](mailto:tnowicki@rosen-group.com)

LinkedIn: <https://www.linkedin.com/in/tad-nowicki/>

