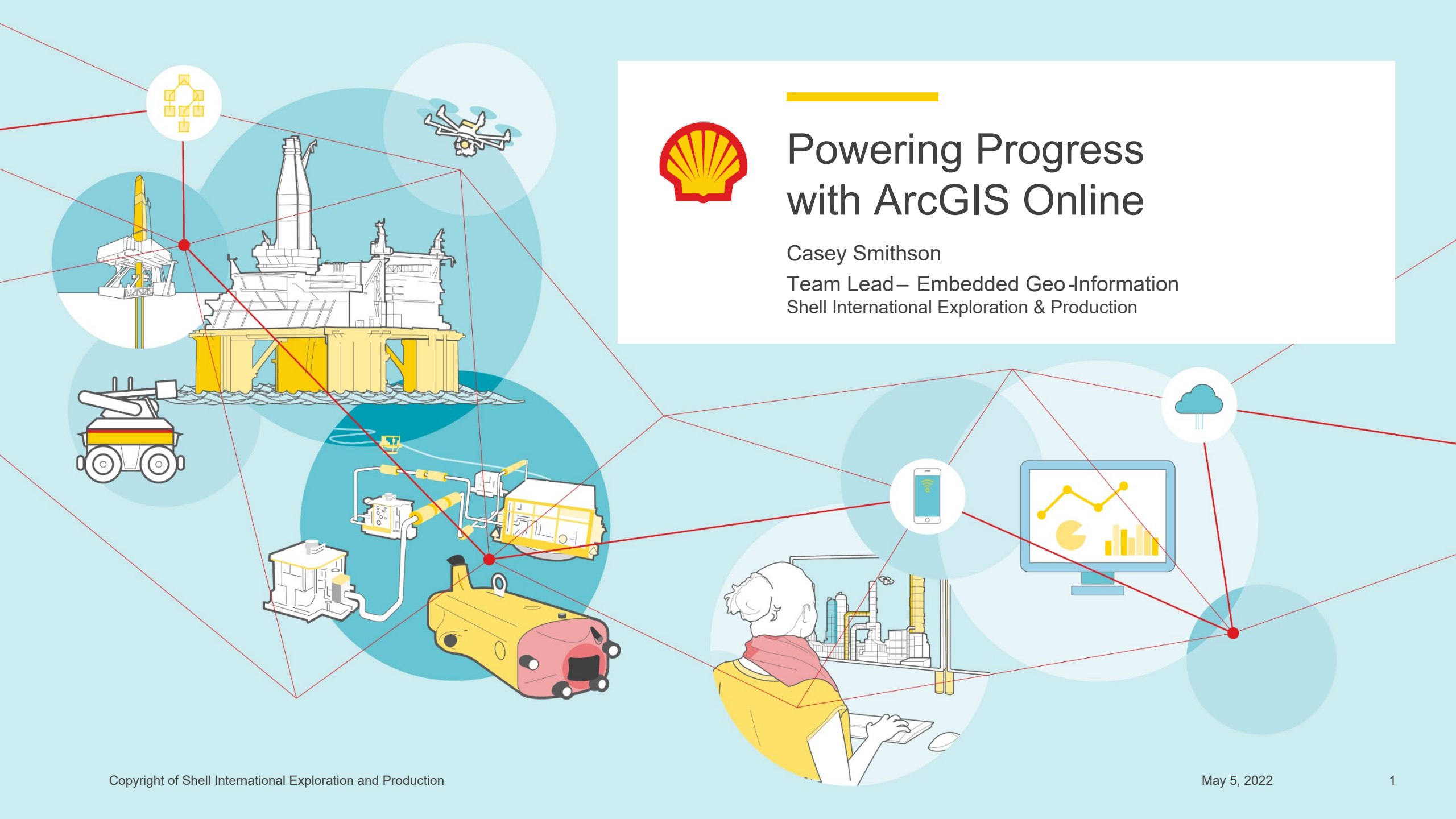




# Powering Progress with ArcGIS Online

Casey Smithson

Team Lead – Embedded Geo-Information  
Shell International Exploration & Production



# Definitions & cautionary note

The companies in which Shell plc directly and indirectly owns investments are separate legal entities. In this [report] “Shell”, “Shell Group” and “Group” are sometimes used for convenience where references are made to Shell plc and its subsidiaries in general. Likewise, the words “we”, “us” and “our” are also used to refer to Shell plc and its subsidiaries in general or to those who work for them. These terms are also used where no useful purpose is served by identifying the particular entity or entities. “Subsidiaries”, “Shell subsidiaries” and “Shell companies” as used in this [report] refer to entities over which Shell plc either directly or indirectly has control. Entities and unincorporated arrangements over which Shell has joint control are generally referred to as “joint ventures” and “joint operations”, respectively. Entities over which Shell has significant influence but neither control nor joint control are referred to as “associates”. The term “Shell interest” is used for convenience to indicate the direct and/or indirect ownership interest held by Shell in an entity or unincorporated joint arrangement, after exclusion of all third-party interest.

This [report] contains forward-looking statements (within the meaning of the U.S. Private Securities Litigation Reform Act of 1995) concerning the financial condition, results of operations and businesses of Shell. All statements other than statements of historical fact are, or may be deemed to be, forward-looking statements. Forward-looking statements are statements of future expectations that are based on management’s current expectations and assumptions and involve known and unknown risks and uncertainties that could cause actual results, performance or events to differ materially from those expressed or implied in these statements. Forward-looking statements include, among other things, statements concerning the potential exposure of Shell to market risks and statements expressing management’s expectations, beliefs, estimates, forecasts, projections and assumptions. These forward-looking statements are identified by their use of terms and phrases such as “aim”, “ambition”, “anticipate”, “believe”, “could”, “estimate”, “expect”, “goals”, “intend”, “may”, “milestones”, “objectives”, “outlook”, “plan”, “probably”, “project”, “risks”, “schedule”, “seek”, “should”, “target”, “will” and similar terms and phrases. There are a number of factors that could affect the future operations of Shell and could cause those results to differ materially from those expressed in the forward-looking statements included in this [report], including (without limitation): (a) price fluctuations in crude oil and natural gas; (b) changes in demand for Shell’s products; (c) currency fluctuations; (d) drilling and production results; (e) reserves estimates; (f) loss of market share and industry competition; (g) environmental and physical risks; (h) risks associated with the identification of suitable potential acquisition properties and targets, and successful negotiation and completion of such transactions; (i) the risk of doing business in developing countries and countries subject to international sanctions; (j) legislative, judicial, fiscal and regulatory developments including regulatory measures addressing climate change; (k) economic and financial market conditions in various countries and regions; (l) political risks, including the risks of expropriation and renegotiation of the terms of contracts with governmental entities, delays or advancements in the approval of projects and delays in the reimbursement for shared costs; (m) risks associated with the impact of pandemics, such as the COVID-19 (coronavirus) outbreak; and (n) changes in trading conditions. No assurance is provided that future dividend payments will match or exceed previous dividend payments. All forward-looking statements contained in this [report] are expressly qualified in their entirety by the cautionary statements contained or referred to in this section. Readers should not place undue reliance on forward-looking statements. Additional risk factors that may affect future results are contained in Shell plc’s Form 20-F for the year ended December 31, 2021 (available at [www.shell.com/investor](http://www.shell.com/investor) and [www.sec.gov](http://www.sec.gov)). These risk factors also expressly qualify all forward-looking statements contained in this [report] and should be considered by the reader. Each forward-looking statement speaks only as of the date of this [report], [insert date]. Neither Shell plc nor any of its subsidiaries undertake any obligation to publicly update or revise any forward-looking statement as a result of new information, future events or other information. In light of these risks, results could differ materially from those stated, implied or inferred from the forward-looking statements contained in this [report]. The content of websites referred to in this [report] does not form part of this [report].

We may have used certain terms, such as resources, in this [report] that the United States Securities and Exchange Commission (SEC) strictly prohibits us from including in our filings with the SEC. Investors are urged to consider closely the disclosure in our Form 20-F, File No 1-32575, available on the SEC website [www.sec.gov](http://www.sec.gov)

# Geomatics



Geodesy  
Geodetic Integrity



Positioning  
Onshore & Offshore



Surveying  
Onshore & Offshore



Earth Observation  
Remote Sensing



Geo -Information  
Site & Route Selection



Delivering value and cost leadership, through optimal and innovative acquisition, integration, management and delivery of geo-information.



~200 Staff  
15 Countries



## OUR PURPOSE

To power progress together by providing more and cleaner energy solutions

### RESPECTING NATURE

Protecting the environment, reducing waste and making a positive contribution to biodiversity

UNDERPINNED BY  
OUR CORE VALUES  
AND OUR FOCUS  
ON SAFETY





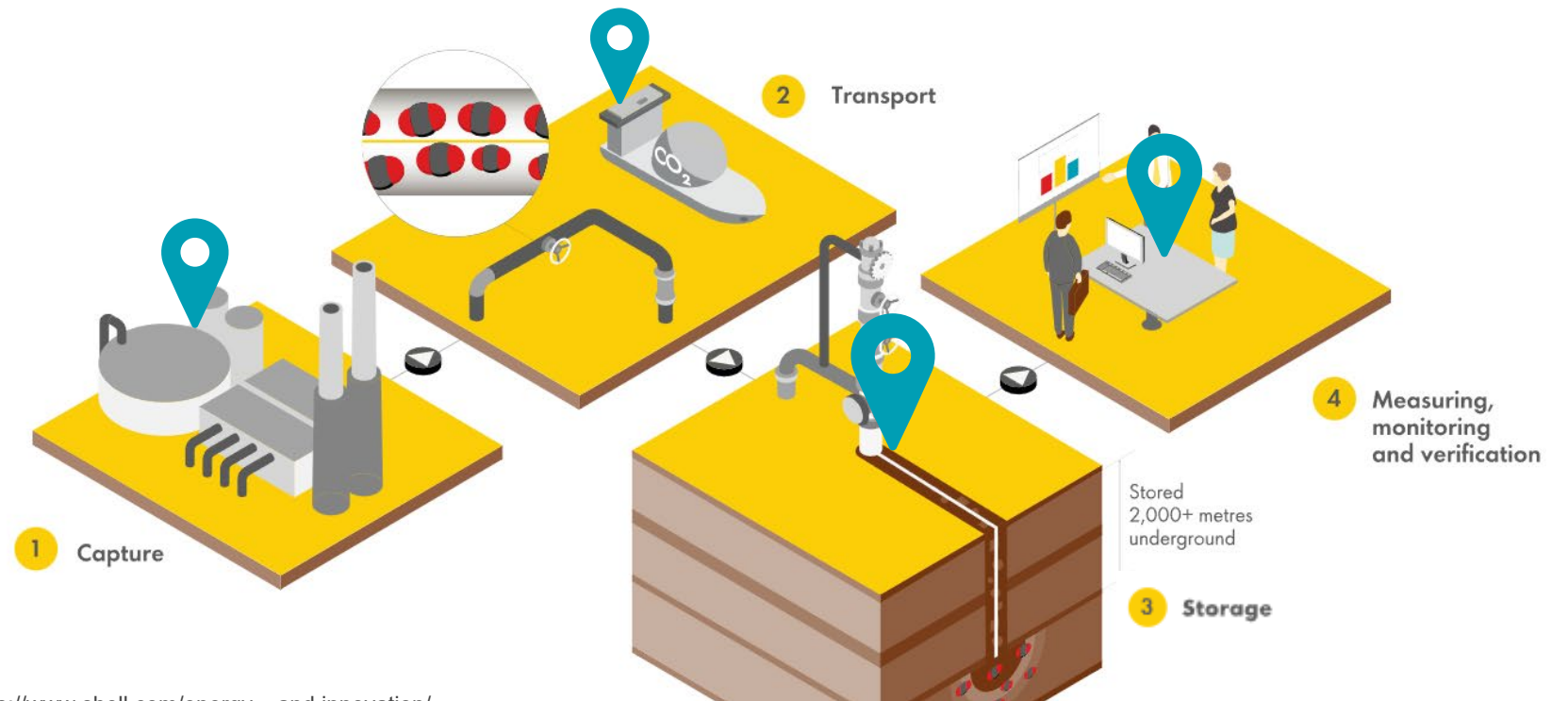
---

Where does  
GIS come in?

ArcGIS Online  
provides a central  
geospatial platform  
for everyone!



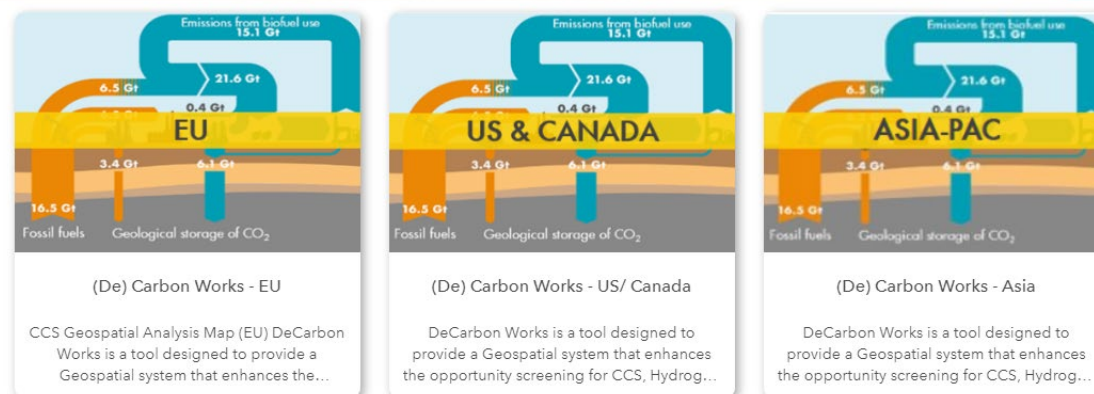
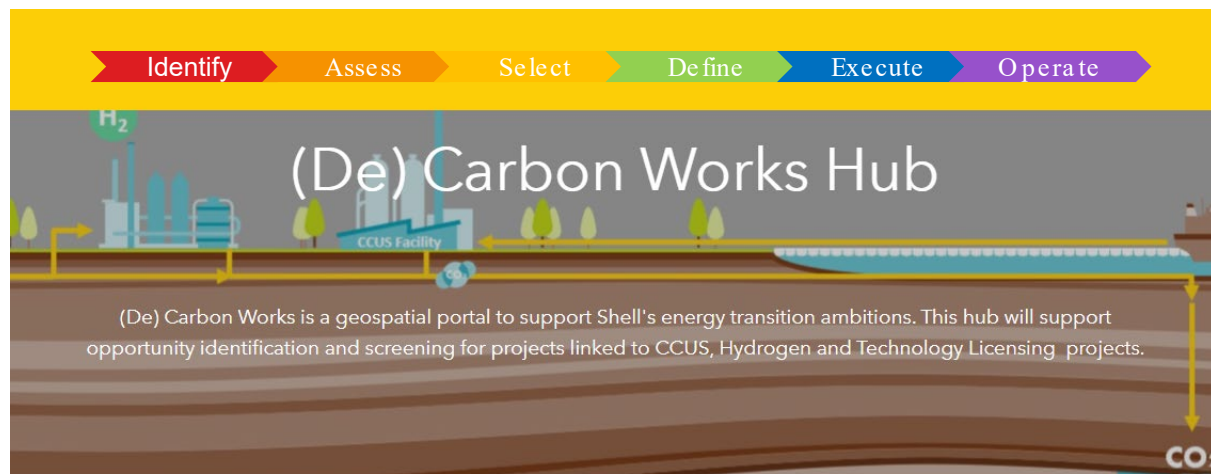
# GIS in Carbon Capture & Storage (CCS)



Source: <https://www.shell.com/energy-and-innovation/>

# Energy & Carbon Management

*Geospatial Capability* of delivering a decision support system, to model energy and carbon ecosystems enabling strategic *opportunity identification* and *screening*



Training Video

## Apps & Maps supporting CCUS Projects

**INDIA: TRANSFORMING TO A NET-ZERO EMISSIONS ENERGY SYSTEM**

Scenarios Search

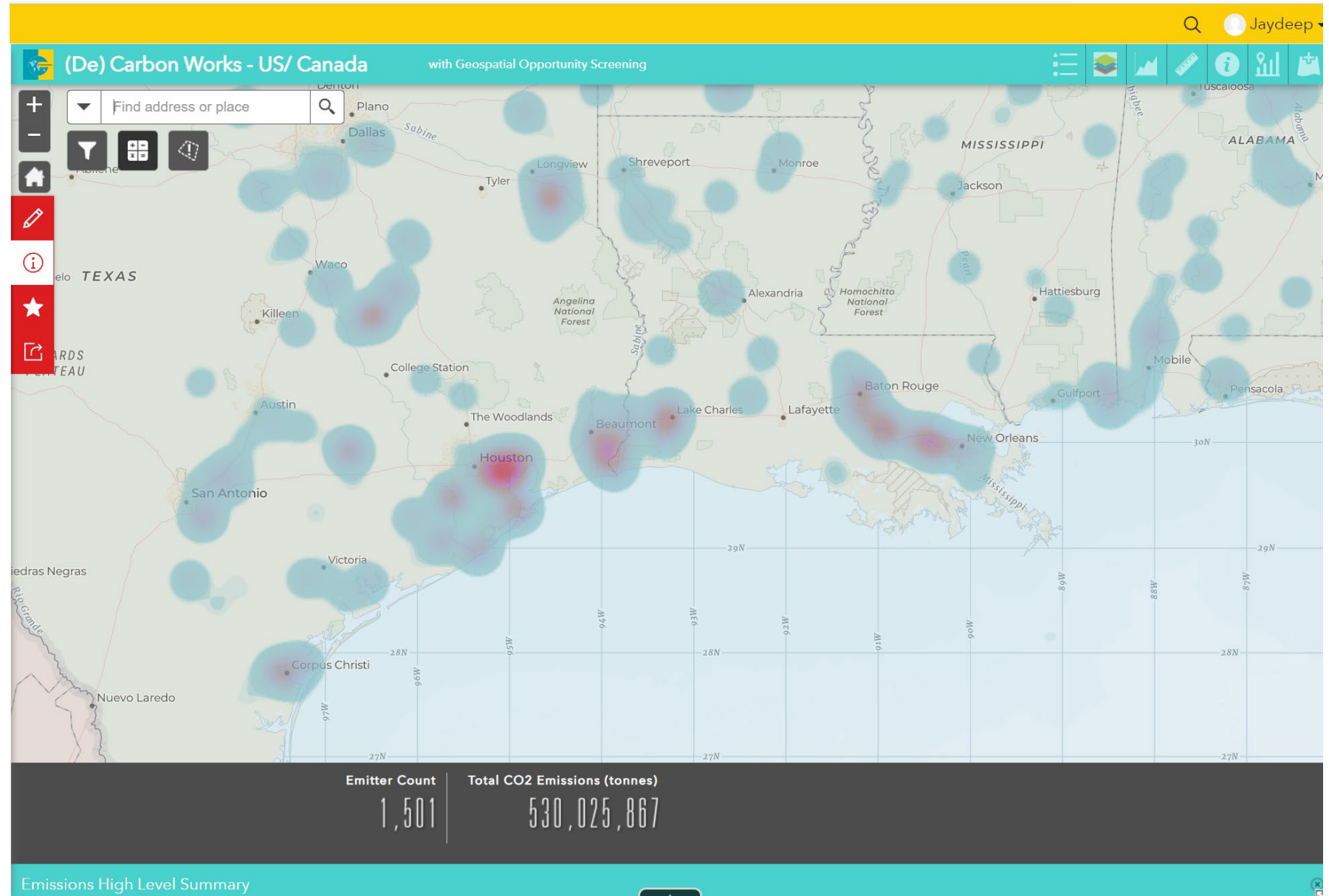
India Geospatial Platform - Source to Sink Story

This story map is a collection of geospatial datasets which can support decarbonization efforts. It is designed to provide a Geospatial system that enhances the opportunity screening for CCS, Hydrogen & Licensing teams, to deliver a competitive advantage to Shell, through providing key insight.

[Explore](#)

# Energy & Carbon Management

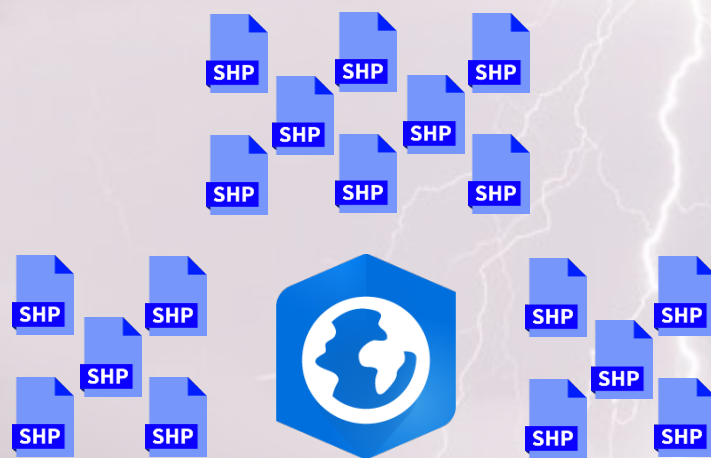
*Geospatial Capability* of delivering a decision support system, to model energy and carbon ecosystems enabling strategic *opportunity identification* and *screening*





## Replacing Old Workflows

Have you  
experienced this  
before?



or



# Digital Collaboration!

Easy replication as  
an ArcGIS Web App  
Builder Template

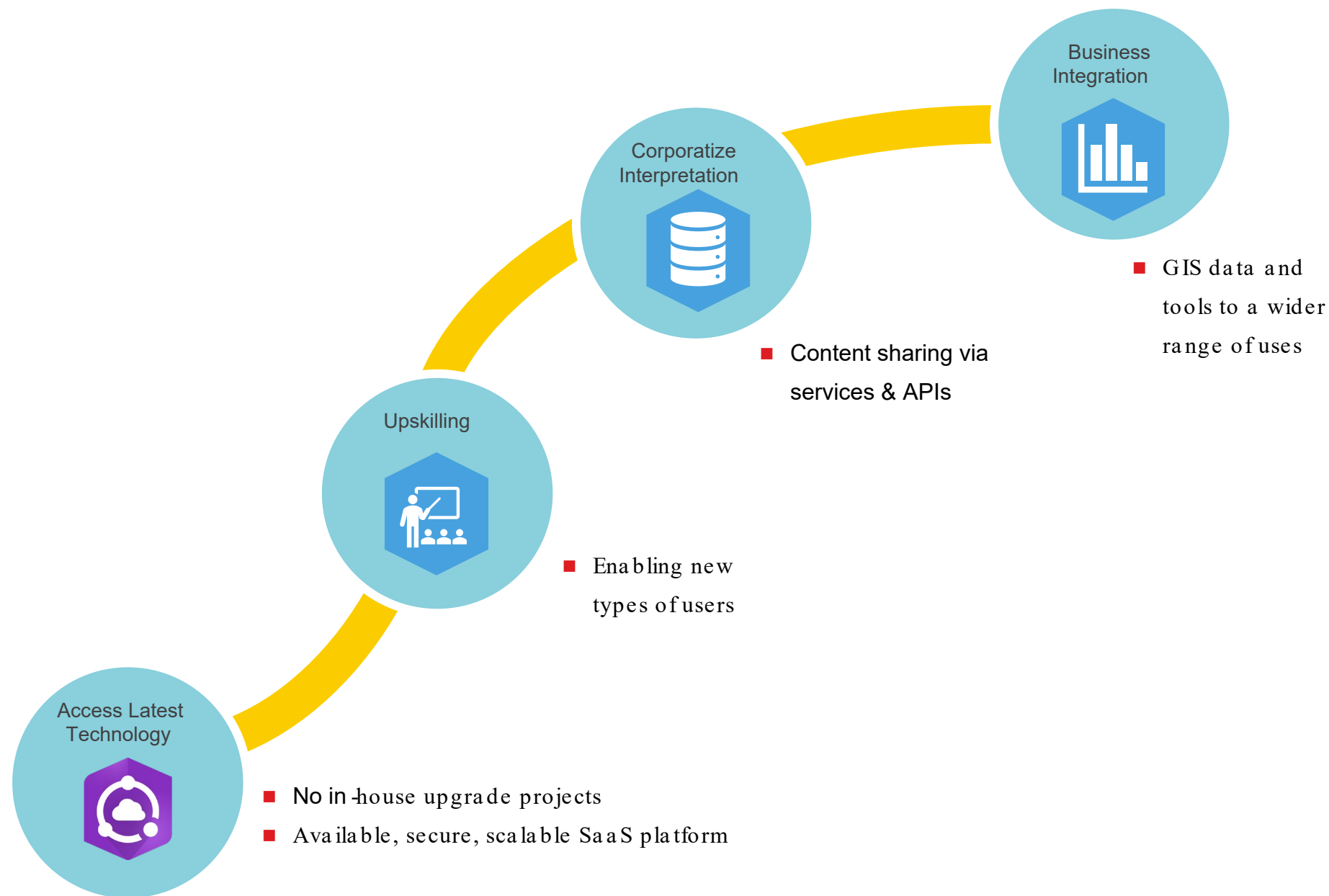
The screenshot displays the 'Digital Mylar for PBE' web application interface. The top navigation bar is yellow and contains the Shell logo, the title 'Digital Mylar for PBE', and a 'Link to Digital Earth Hub' button. The main interface is divided into several panels:

- Layer List:** A panel on the left showing a list of layers. Three layers are checked: 'PBE GDM Shell - Play Elements (Paleocene)', 'PBE GDM Shell - Lithology', and 'PBE GDM Shell - GDE - (Paleocene)'. Below this is a 'Filter' section with four toggle switches for 'Play Elements (Paleocene)' categories: 'Charge' (off), 'Reservoir' (on), 'Seal' (off), and 'Structure' (off).
- Edit:** A panel at the bottom left showing a 'Select a template to create features' dropdown. It lists templates like 'AOI\_PBE\_GDM\_Shell - GDE Boundaries' and 'AOI\_PBE\_GDM\_Shell - GDE System'. Below these are icons for 'Continental / Terrestrial', 'Igneous', 'Marine', and 'Non-Depositional'.
- Map:** The central area shows a geological map with various colored regions. A search bar at the top right allows finding addresses or places.
- Annotations:** Several blue callout boxes with arrows point to specific features:
  - 'Corporate data stores' points to the 'PBE GDM Shell - GDE - (Paleocene)' layer.
  - 'Filter by Play Element' points to the 'Reservoir' toggle switch.
  - 'Data templates' points to the 'AOI\_PBE\_GDM\_Shell - GDE System' template.
  - 'Fit for purpose editing' points to the 'Freehand Polygon' tool in the edit panel.
  - 'Customizable templates' points to the map area.
  - 'Immediately visible in other applications' points to the map area.

The bottom right corner of the map area shows the text 'Powered by esri' and 'Tellus, GDS, ETOPO, Geomatics GSNL'.

## ArcGIS Online as part of our Geospatial Approach

Benefits of our  
ArcGIS Online  
migration





Team Lead – Embedded Geo-Information  
Shell International Exploration & Production



