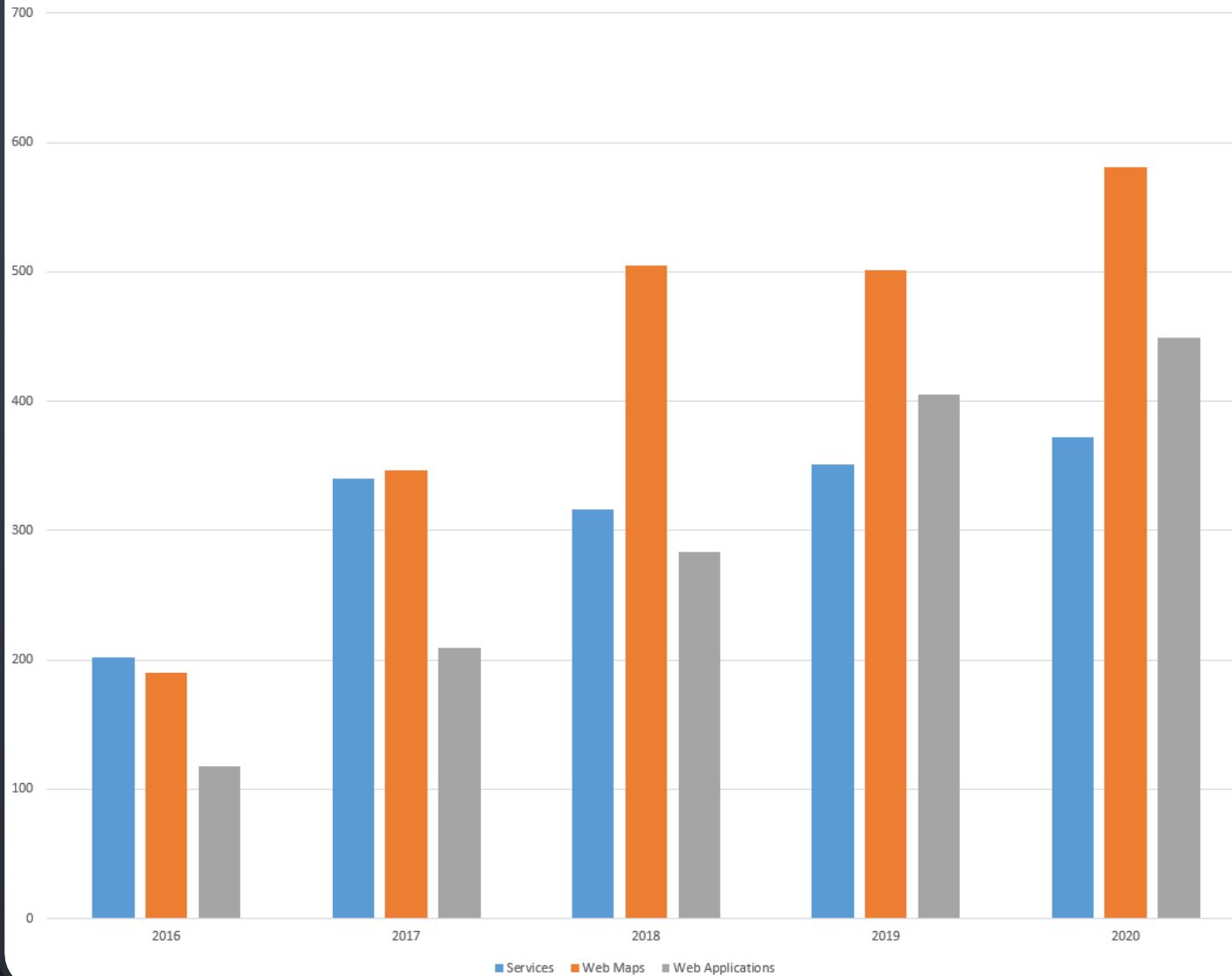


GIS SYSTEM MAINTENANCE PLAN

JOE GUZI

Growth of GIS System 2016-2020



GROWTH OF
GIS SYSTEM

WE HAD BEEN DOING
AUDITS AND
MAINTENANCE FOR
SOME TIME, BUT WE
REALIZED....



I have part of a plan!

SO WE DID A LITTLE SOUL
SEARCHING AND REALIZED...



12% OF A PLAN

KIRKS



- THE 12% OF THE PLAN WAS A START
 - IT BEGAN VERY ORGANICALLY
- SOME OF THE AUDITS HAVE BEEN WORKING SUCCESSFULLY FOR 2 OR 3 ITERATIONS
- IT HAD SOME GOOD IDEAS ABOUT WAYS TO ORGANIZE OUR SYSTEM
- WE HAD SOME PROCEDURES

KAHNS



- WE WERE MISSING SYSTEM COMPONENTS
- WE HAD NO PLAN FOR UPGRADES
- IT WASN'T REALLY A PLAN IT WAS MORE OF A COLLECTION OF THINGS WE WOULD LIKE TO DO.
- IT WAS VERY UNORGANIZED

QUESTIONS WE WANTED ANSWERED

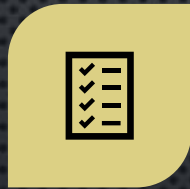
- WHY?
 - WHAT'S THE PURPOSE OF THIS PLAN?
- WHAT WILL WE DO?
- WHAT WILL WE USE TO MAINTAIN OUR GIS SYSTEM?
- HOW WE WILL MAINTAIN OUR GIS SYSTEM?



SO WE BEGAN BRAINSTORMING DIFFERENT COMPONENTS OF WHAT BECAME OUR SYSTEM MAINTENANCE PLAN



OVERVIEW OF OUR
GIS SYSTEM



AUDITS



MONTHLY HIGH-
LEVEL SYSTEM
CHECK



UPGRADES



TOOLS



PROCEDURES

THE OVERVIEW OF THE GIS SYSTEM OUTLINES ALL OF THE COMPONENTS THAT MAKE UP THE GIS SYSTEM.

GIS databases

ArcGIS Servers

ArcGIS
Enterprise

GeoEvent Server

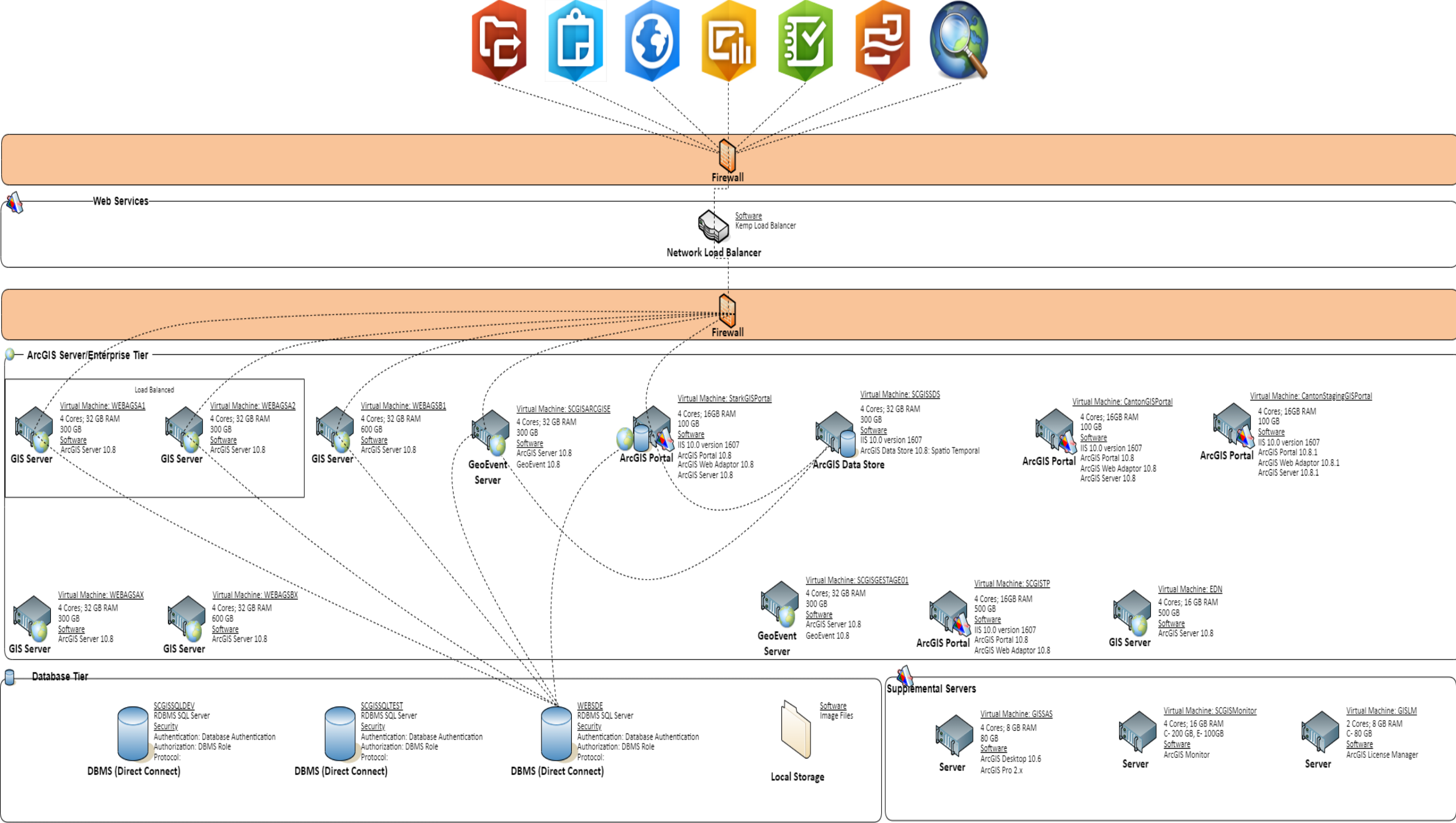
supplemental
servers

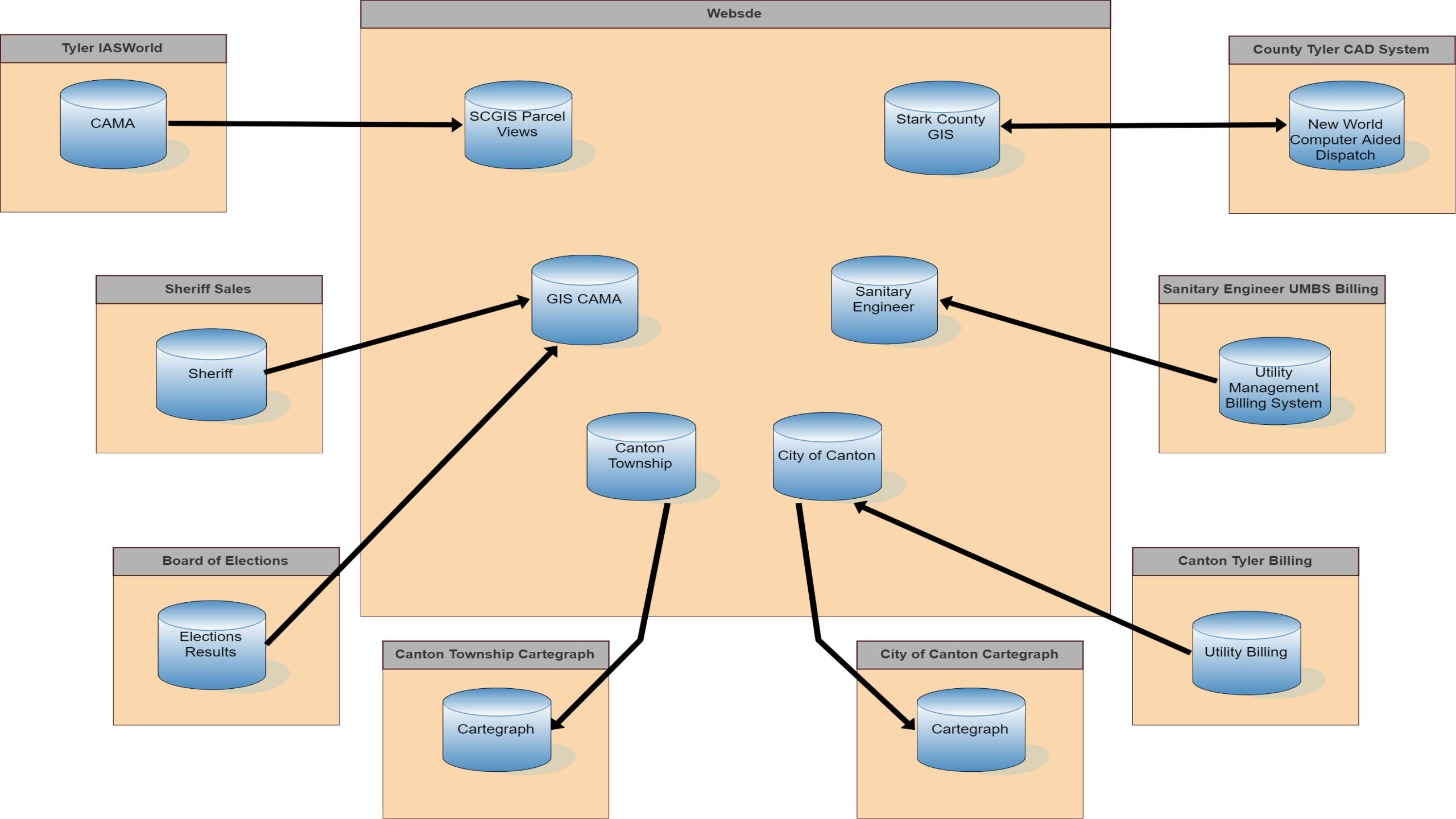
ArcGIS Desktop

Python scripts

ArcGIS Online

Third Party
Integrations

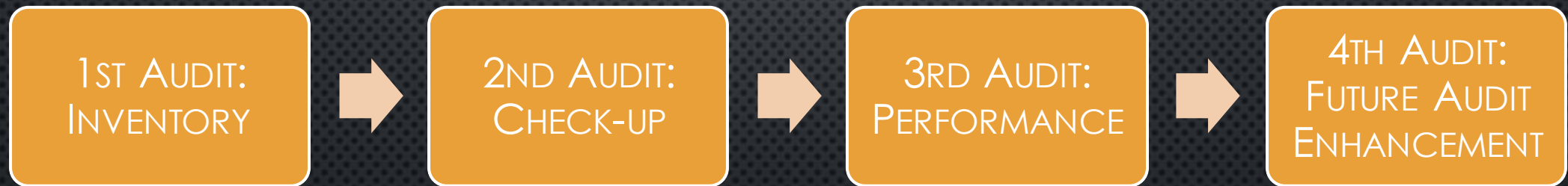




AUDITS

- ARCGIS ENTERPRISE LINEAGE AUDIT
- ARCGIS ONLINE AUDIT & ARCGIS ENTERPRISE AUDIT
- ARCGIS SERVER AUDIT
- AUTOMATED SQL SERVER COMPONENT AUDIT
- GEOEVENT AUDIT
- GP TOOLS AND GP SERVICES AUDIT
- PYTHON SCRIPT AUDIT
- USER AUDIT

AUDIT IMPLEMENTATION WORKFLOW



FUTURE AUDIT ENHANCEMENT WORKFLOW



EXAMPLE – PYTHON AUDIT

- CHECK LOG FILES TO MAKE SURE SCRIPTS ARE RUNNING PROPERLY AND ARE RUNNING DURING THE APPROPRIATE TIME
- SOME SCRIPTS REFERENCE TIMESTAMPS IN TEXT FILES FOR QUERYING
 - MAKE SURE THE TIMESTAMPS ARE BEING UPDATED
- PERFORM ANY ADDITIONAL MODIFICATIONS TO SCRIPTS AS NEEDED
- UPGRADE ARCGIS PRO ON SERVER THAT RUNS SCRIPTS

Audits	1st Half 2017	2nd Half 2017	1st Half 2018	2nd Half 2018	1st Half 2019	2nd Half 2019	1st Half 2020	2nd Half 2020	1st Half 2021	2nd Half 2021
Python Script Audit										
ArcGIS Server/Enterprise Audit										
GeoEvent Audit										
ArcGIS Online Audit										
GP Tools and GP Services Audit										
Automated SQL Server Component Audit										
User Audit										
ArcGIS Enterprise Lineage Audit										

SCGIS AUDIT IMPLEMENTATION



Check server logs on ArcGIS Server and GeoEvent Server



Review the number of maximum and minimum instance on ArcGIS Servers



Review a Python Script Audit that summarizes the last time each script ran



Check alerts on ArcGIS Monitor



Check available memory, available disk space and processor time of server using ArcGIS Monitor



Review desktop license usage using ArcGIS Monitor



Evaluate additional features of ArcGIS Monitor, to be added for future monthly system checks

MONTHLY HIGH LEVEL SYSTEM CHECK

UPGRADES



UPGRADE
SCHEDULE



UPGRADE PLAN



EVALUATING NEW
TECHNOLOGY

UPGRADE SCHEDULE CONSIDERATIONS

Esri's current release schedule occurs during the months of March and July

The July x.x.1 release typically has a longer support cycle

Occurrence of patch releases to fix bugs

Scheduling with the Stark County IT Team

Scheduling during a time of low utilization; possibly in December when staff takes vacation for the holidays

Avoidance of major events that rely heavily on the GIS system

- Reappraisal
- Elections

Weighing the business needs of Stark County

Weighing the risk of upgrading



The necessity to properly vet new functionality due to the limited documentation regarding the new functionality of new releases

Attempting to stay no more than four releases behind.



UPGRADE SCHEDULE

- **BIANNUAL DEVELOPMENT SERVER UPGRADE SCHEDULE**

- MEET THE SECOND TUESDAY IN APRIL TO REVIEW THE NEW RELEASE AND SCHEDULE THE UPGRADE OF THE DEVELOPMENT SERVERS
- MEET THE SECOND TUESDAY IN AUGUST TO REVIEW THE NEW RELEASE AND SCHEDULE THE UPGRADE OF THE DEVELOPMENT SERVERS
- IF THE TESTING AND EVALUATION OF THE NEW RELEASE PROVES TO BE IMMEDIATELY BENEFICIAL TO THE BUSINESS NEEDS OF STARK COUNTY, AND THERE IS MINIMAL RISK, THE SYSTEM MAINTENANCE TEAM MAY RECOMMEND UPGRADING THE STAGING AND PRODUCTION SERVERS SOONER THAT WHAT IS OUTLINED BELOW

- **ANNUAL STAGING AND PRODUCTION SERVER UPGRADE SCHEDULE**

- MEET DURING THE ARCGIS SERVER AUDIT IN NOVEMBER TO EVALUATE THE OPTIONS TO UPGRADE
- IF THE DECISIONS IS MADE TO PROCEED WITH THE UPGRADE, IT WILL BE SCHEDULED FOR DECEMBER



Evaluate the benefits of new features,
and effort/risk of upgrading



The preference is to be no more
than 4 releases behind



Due to the longer support cycle for the
X.X.1 releases, these releases will be
favored



Consider
upgrading development servers at every
release to look closer at the release

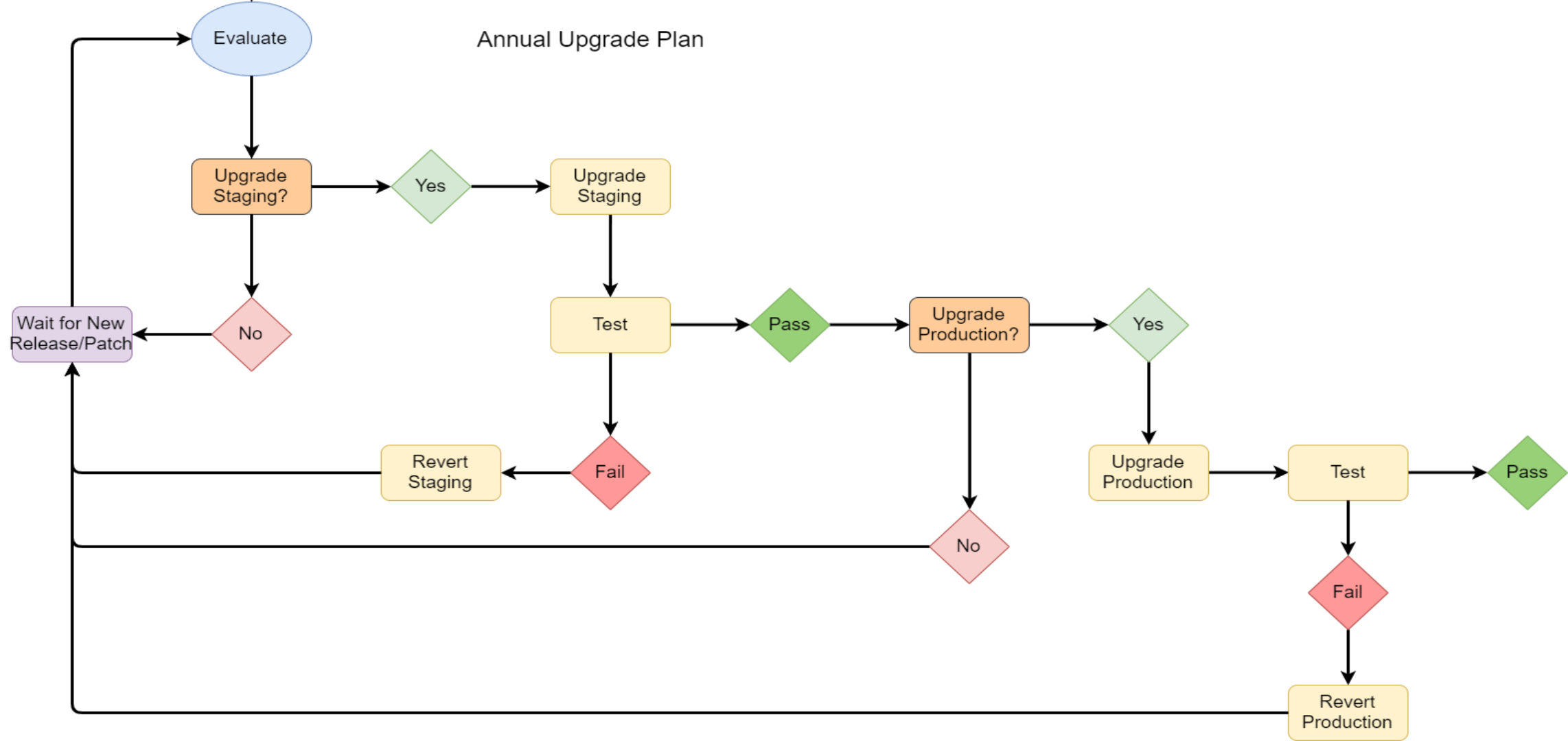
UPGRADE PLAN

Upgrade Plan

Bi-Annual Upgrade Plan



Annual Upgrade Plan



MISSION CRITICAL TEST LIST



ArcGIS ONline/Enterprise

Data Store Item/ Bulk Publishing
Publishing Services
Export Data from Open Data



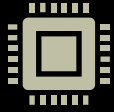
ArcGIS Server

Testing print services
Address Locators
Publishing Services



Arcmap

Versioning Test



Review the Technology - Understand what the technology is best used for and what existing technology it would replace. R&D the New Technology



Procurement - The system maintenance team will propose the final procurement plan in October for evaluation.



Implementing - The system maintenance team will use the scope outlined before to implement the new technology, and document its usage.



Audit - After the new technology is implemented, the system maintenance team will schedule an audit during the next audit cycle. At that time, the system maintenance team will follow the audit implementation workflow outlined above.

PROCESS FOR EVALUATING NEW TECHNOLOGY



TOOLS

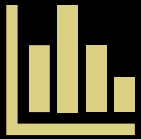


TOOLS – PYTHON SCRIPTS/SSRS REPORTS

- FEATURE CLASSES BEING REPLICATED
- GEODATABASE COMPONENTS
- DATA SOURCE OF LAYERS IN SERVICES PUBLISHED TO ARCGIS SERVER
- SERVICES ON ARCGIS SERVER
- ITEMS ON ARCGIS ONLINE AND ARCGIS PORTAL
- LAYERS IN WEB MAPS ON ARCGIS ONLINE
- ERRORS WITH LAYERS IN WEB MAPS
- GROUPS ON ARCGIS ONLINE AND ENTERPRISE
- USERS ON ARCGIS ONLINE AND ENTERPRISE
- WEB APPLICATIONS ON ARCGIS ONLINE AND ENTERPRISE
- WIDGETS IN WEB APPLICATIONS
- DATA SOURCE OF FEATURE CLASSES AND TABLES USED IN PYTHON SCRIPTS



Excel report on ArcGIS
Monitor is run during the
ArcGIS Server Audit



The report provides
statistics on the
performance of services



This is used to adjust
resources allocated to
services

TOOLS – ARCGIS MONITOR EXCEL REPORT

TOOLS – ARCGIS ENTERPRISE LINEAGE

- SHOWS THE RELATIONSHIPS OF COMPONENTS IN THE GIS SYSTEM
 - DATABASE
 - ARCGIS SERVER
 - WEB MAPS AND APPS
 - WIDGETS
- CONSISTS OF A SQL VIEW AND AN SSRS REPORT FOR VIEWING THE DATA
- THE SQL VIEW COMBINES THE AUDIT TABLES GENERATED BY THE PYTHON SCRIPTS

REASONS TO HAVE A SYSTEM MAINTENANCE PLAN

A group of men in a meeting room, looking at a document. The scene is dimly lit, with a bright light source visible in the background. The men are dressed in business attire, and the atmosphere appears to be one of a formal meeting or presentation.

I love this plan. I'm excited to be a part of it.

MakeAGIF.com

Whether you have a

...



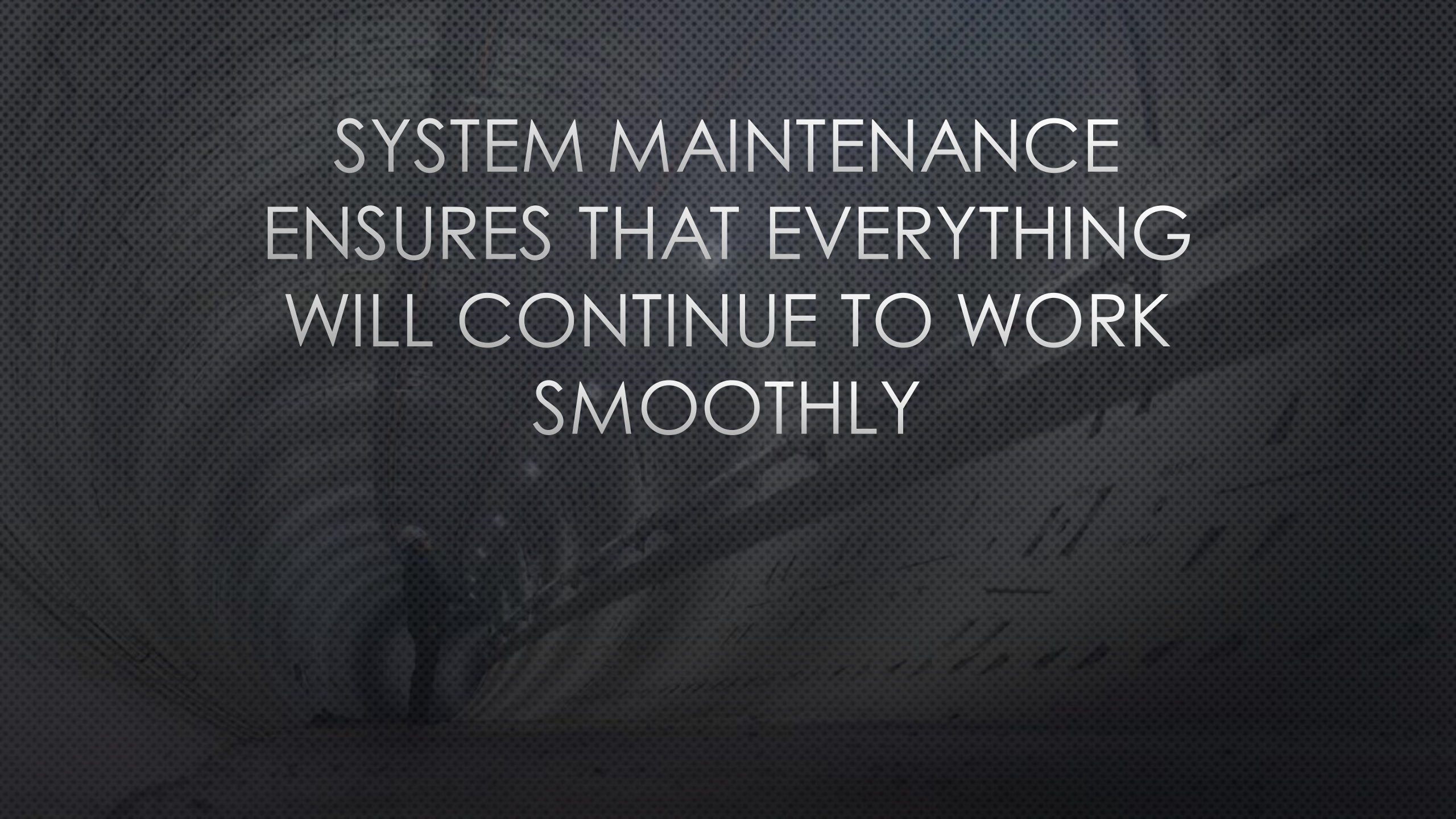
Small GIS System

Large GIS System



An aerial photograph of a winding road on a hillside, overlaid with a dark halftone pattern. The road curves through the landscape, and the hills are visible in the background.

GIS SYSTEM IS SIMILAR TO
A LIVING THING



SYSTEM MAINTENANCE
ENSURES THAT EVERYTHING
WILL CONTINUE TO WORK
SMOOTHLY

SYSTEM MAINTENANCE PLAN PROVIDES



Inventory of all
System
Components



Periodic check of
all system
components



More informed
decision making



Procedures
upgrade system
components



Increased "Bus
Factor"

THINGS TO CONSIDER WHEN DRAFTING A SYSTEM MAINTENANCE PLAN



By failing to prepare, you are preparing to fail.

(Benjamin Franklin)

Audits	1st Half 2017	2nd Half 2017	1st Half 2018	2nd Half 2018	1st Half 2019	2nd Half 2019	1st Half 2020	2nd Half 2020	1st Half 2021	2nd Half 2021
Python Script Audit										
ArcGIS Server/Enterprise Audit										
GeoEvent Audit										
ArcGIS Online Audit										
GP Tools and GP Services Audit										
Automated SQL Server Component Audit										
User Audit										
ArcGIS Enterprise Lineage Audit										

START SMALL

START AUDITING ORGANICALLY



AUTOMATE AUDITS WHEN ABLE

The background features a dark blue, textured surface with a grid of hexagons. Each hexagon contains a white line-art icon: a document with a checklist, a lightbulb, a gear, a bar chart, and a network diagram. The words 'AUTOMATION', 'TECHNOLOGY', and 'SYSTEMS' are faintly visible in the background. A faint world map is also visible on the right side.

FIND A SCHEDULE THAT WORKS FOR YOU

[illegible]



THE MISSION CRITICAL TEST
LIST SHOULD BE UNIQUE TO
YOUR ORGANIZATION

DOCUMENT, DOCUMENT, DOCUMENT

1

Document the
system

2

Document
procedures

3

Document
audit results

QUESTIONS?



Stark County GIS System
Maintenance Plan



jsguzi@starkcountyohio.gov