

ArcGIS Indoors: An Introduction

Jinho Kang, Marco Viola

Esri Southeast User Conference



ArcGIS Indoors: An Introduction

Jinho Kang

Sr. Solution Engineer

Smart Cities, Indoor GIS

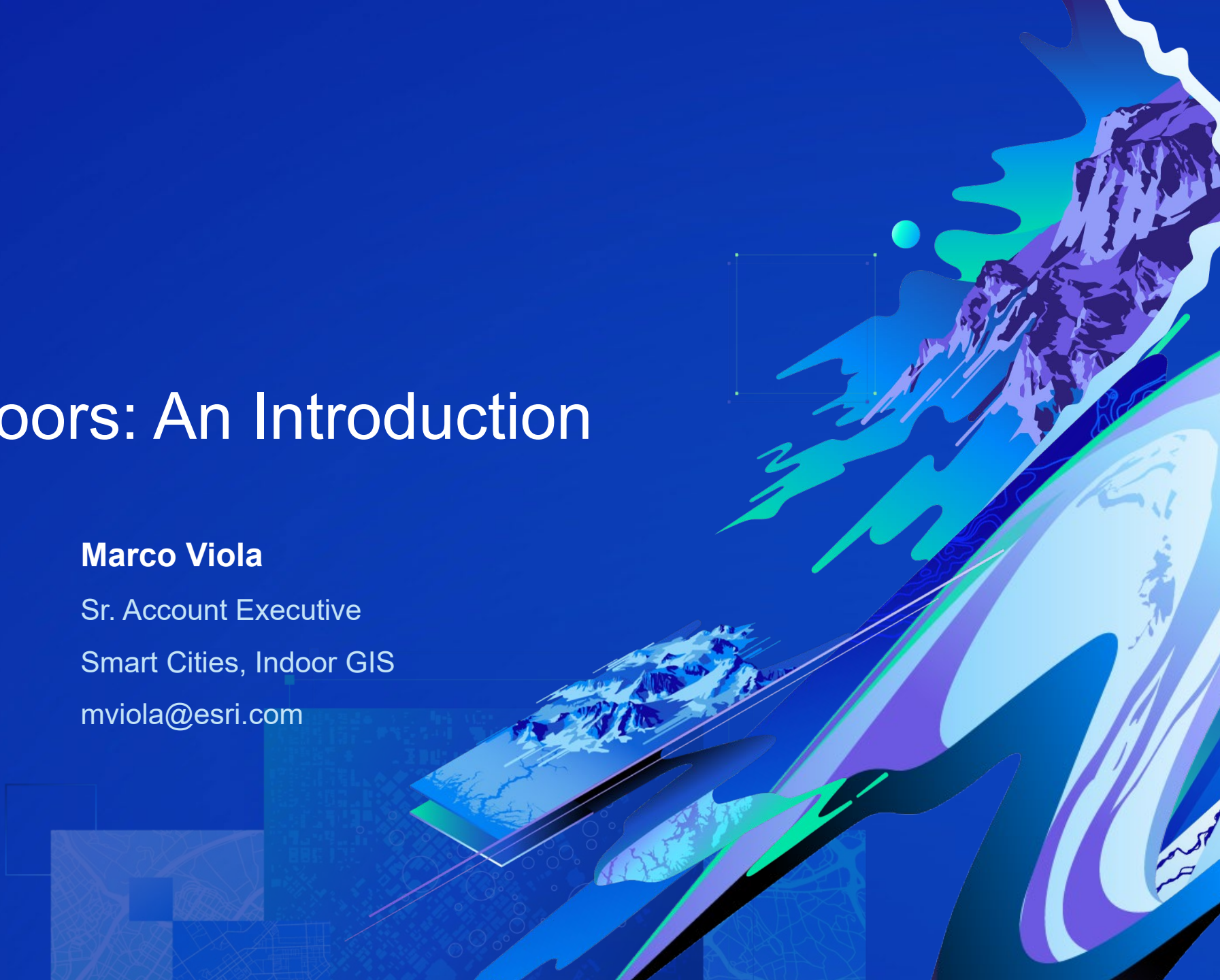
jkang@esri.com

Marco Viola

Sr. Account Executive

Smart Cities, Indoor GIS

mviola@esri.com



Agenda

- Introduction + ArcGIS Indoors Overview
5 min
- (New) Indoors Components & License Model
10 min
- Workflow
5 min
- Demonstrations
20 min
- Resources
5 min
- Q&A
15 min

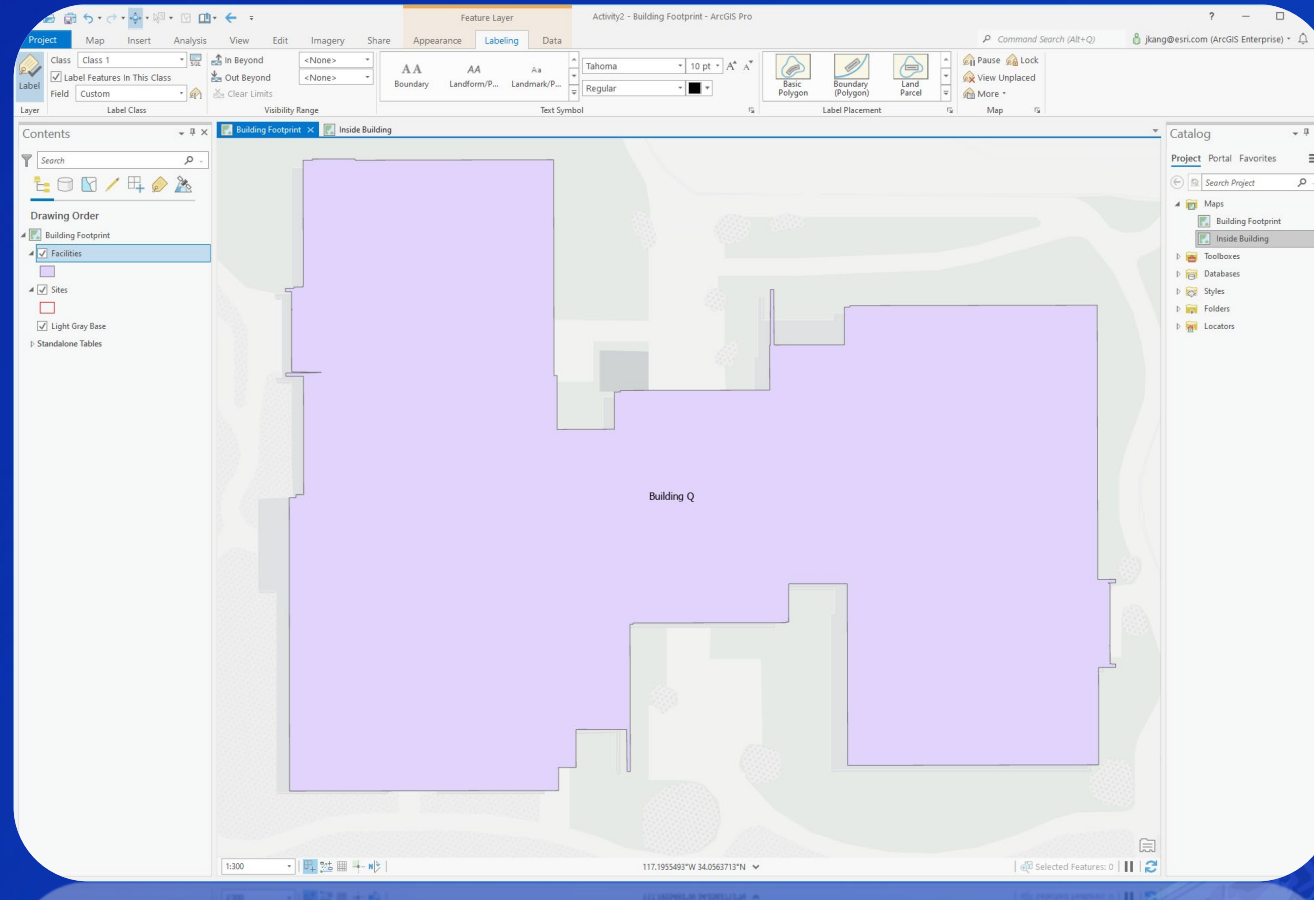


ArcGIS Indoors Overview

The background is a solid dark blue. In the top left corner, there are several overlapping squares and rectangles in lighter blue and green, some containing faint patterns. On the right side, there is a stylized, abstract representation of a mountain range in shades of blue and green. The mountains are layered, with some appearing closer and more detailed than others. A small, bright green circle is visible near the top right, above the mountain range. The overall aesthetic is modern and technological.

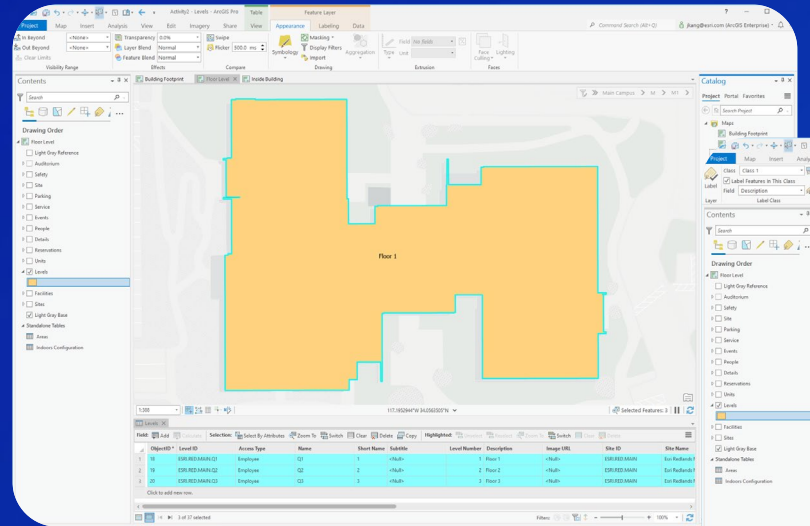
ArcGIS Indoors

How do you map / design facilities?

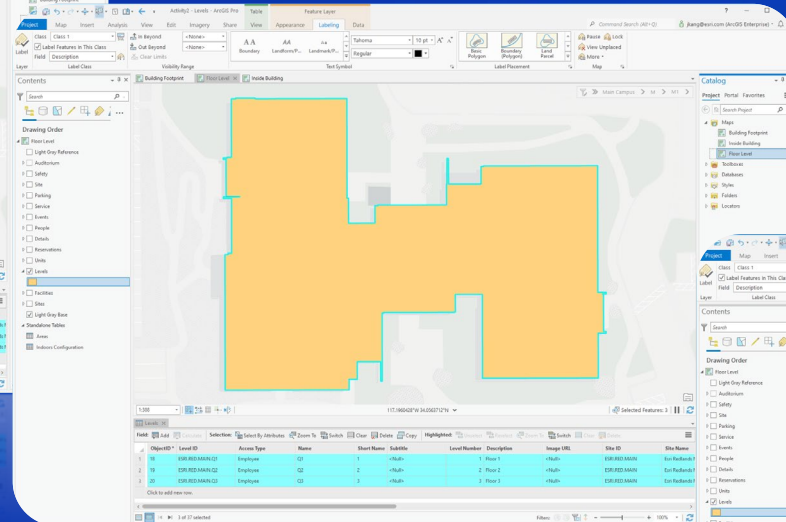


ArcGIS Indoors

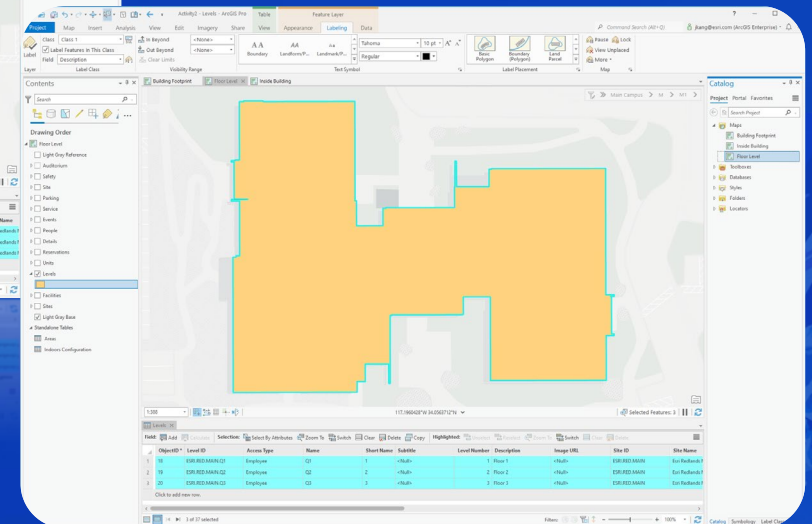
How do you map / design each facilities' floor levels?



1st Floor



2nd Floor



3rd Floor

ArcGIS Indoors

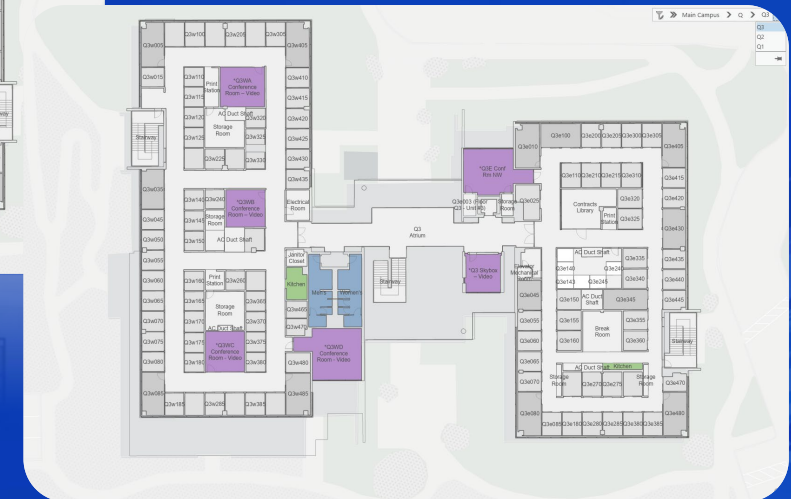
How do you map / design each facilities' floor levels & each unit space?



1st Floor



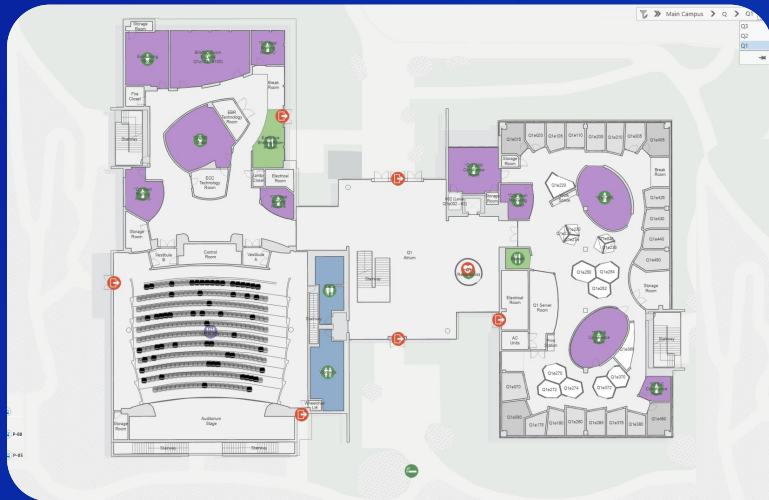
2nd Floor



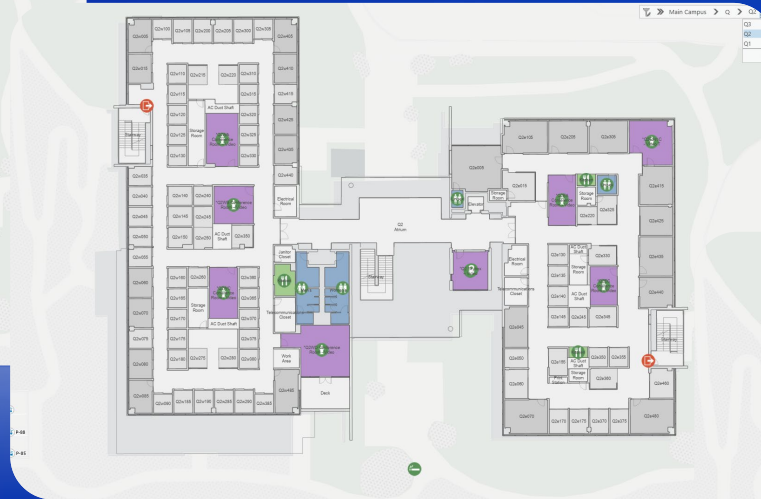
3rd Floor

ArcGIS Indoors

How do you map / design each facilities' floor levels, each unit space, and associated assets?



1st Floor



2nd Floor



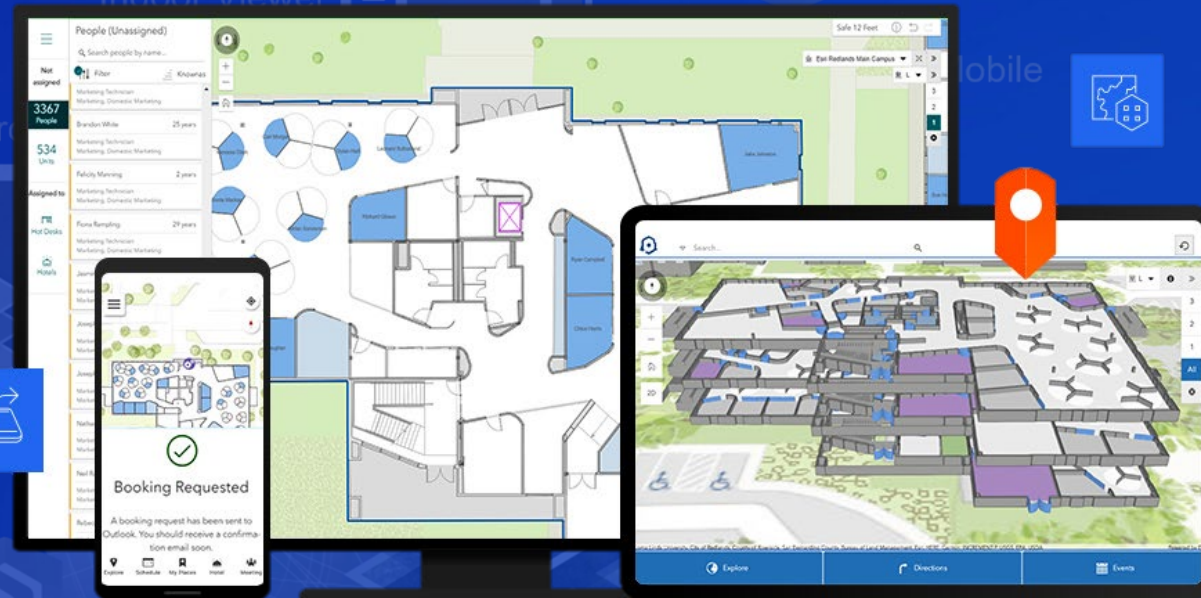
3rd Floor

ArcGIS Indoors

Esri's complete indoor mapping system for geospatial building management

CAD/BIM Floorplans

Events
Incidents
Assets



ArcGIS Enterprise

ArcGIS Online

ArcGIS IPS

APIs

Experience Builder

Field Maps (Coming Soon)

Dashboards

Survey 123 & Connect

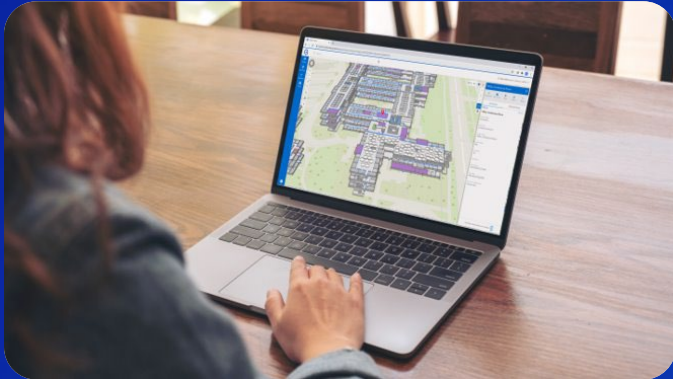
Hub

Instant Apps and etc.

3rd Party Asset Management

ArcGIS Indoors

Support facilities, workplace operations, and maintenance workflows across your organization



Find everything across
the facility portfolio



Share facility maps faster
for better communication



Improve maintenance plans
and resource allocations

ArcGIS Indoors

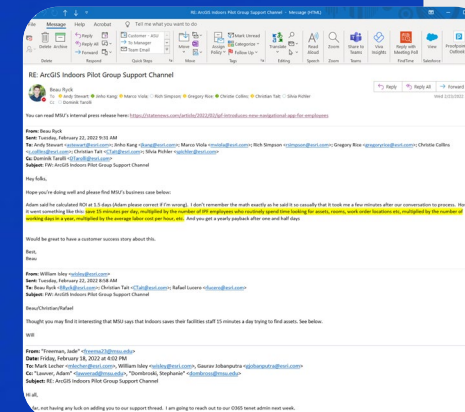
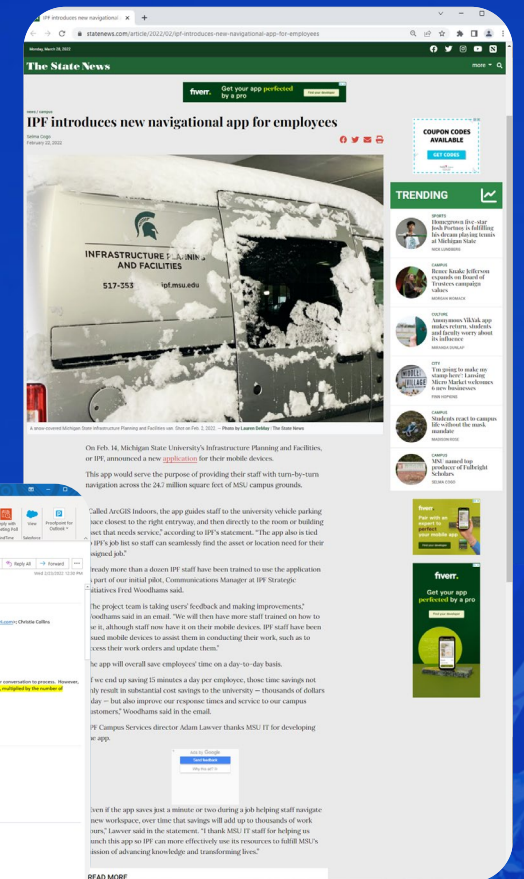
Customer's Success Story

"The (ArcGIS Indoors) app also is tied to IPF's job list so staff can seamlessly find the asset or location need for their assigned job..."

... If we end up saving 15 minutes a day per employee, those time savings not only result in substantial cost savings to the university – thousands of dollars a day – but also improve our response times and service to our campus customers,"

Michigan State University
email from Information Technology.
February 18, 2022

<https://statenews.com/article/2022/02/ipf-introduces-new-navigational-app-for-employees>

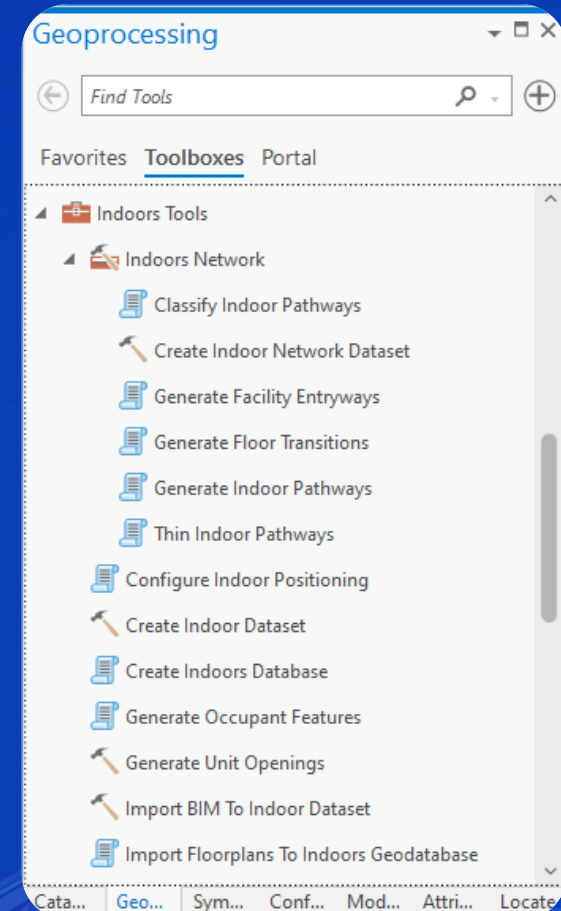


ArcGIS Indoors Components



ArcGIS Indoors Components (2022)

Core – Indoors Pro (Desktop)



ArcGIS Indoors Components

Core – Indoors Maps (Includes Indoors Pro)



ArcGIS Indoors Components

Indoors Maps + Indoors Spaces



ArcGIS Indoors Components

Indoors Maps & Spaces + ArcGIS IPS



ArcGIS Indoors Components

"Indoor GIS Ecosystem"



Indoors Workflow



Indoors Workflow

General workflow process

1



DATA PREPARATION

- Convert CAD or Revit floor data
- Curate layers & symbology
- Add additional assets
- Create Indoor network dataset
- Configure indoor categories

Indoors Workflow

General workflow process

1



DATA PREPARATION

- Convert CAD or Revit floor data
- Curate layers & symbology
- Add additional assets
- Create Indoor network dataset
- Configure indoor categories

2



WEB MAPS AND APP SETUP

- Publish web layers and maps
- Create Indoor Viewer
- Create Space Planner
- Publish Indoor Network Dataset
- Publish Mobile Map

Indoors Workflow

General workflow process

1



DATA PREPARATION

- Convert CAD or Revit floor data
- Curate layers & symbology
- Add additional assets
- Create Indoor network dataset
- Configure indoor categories

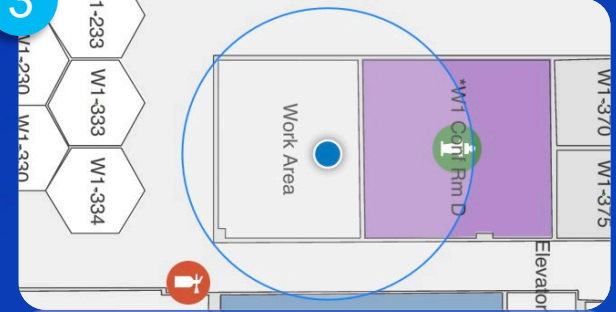
2



WEB MAPS AND APP SETUP

- Publish web layers and maps
- Create Indoor Viewer
- Create Space Planner
- Publish Indoor Network Dataset
- Publish Mobile Map

3



ENHANCEMENT

- Setup Indoor Positioning System
- Configure Launch Action
- Leverage other ArcGIS apps



Demonstration #1

Floorplan CAD to Indoor Information Model

Required Extension License:

“ArcGIS Indoors Pro”

or

“ArcGIS Indoors Maps”



Demonstration #2

Enhancement with occupants and categories

Required Extension License:

“ArcGIS Indoors Pro”

or

“ArcGIS Indoors Maps”



Demonstration #3

Indoor Viewer App Experience

Required Extension License:

“ArcGIS Indoors Maps”



Demonstration #4

Space Planner App Experience

Required Extension License:

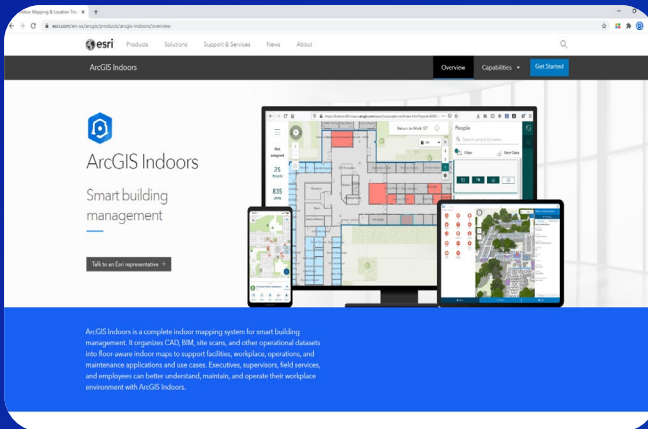
“ArcGIS Indoors Maps” + “ArcGIS Indoors Spaces”

Resources



Indoors GIS Resources

Available online documents and resources

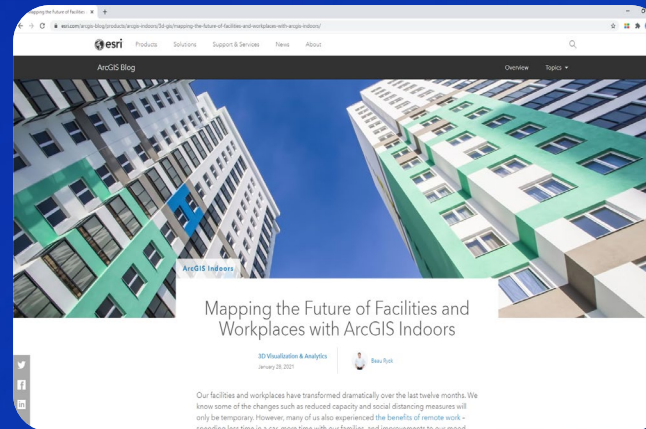


FEATURED PRODUCTS

[ArcGIS Indoors Product Page](#)

[ArcGIS IPS Product Page](#)

[Indoor GIS Webinars](#)

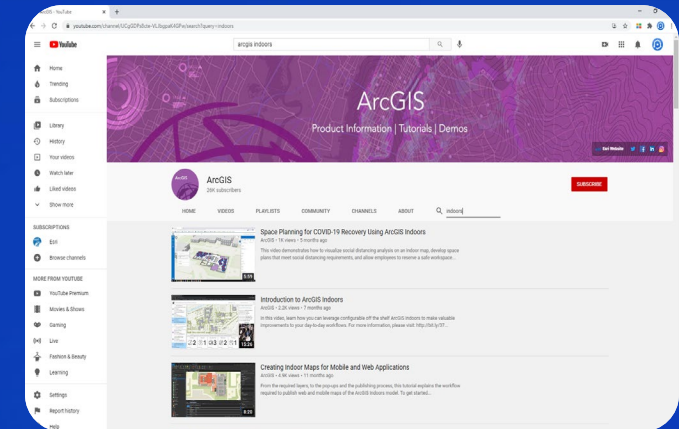


BUSINESS CASES

[WhereNext Series](#)

[ArcGIS Blog](#)

[Industry Case Studies](#)



ENABLEMENT MATERIALS

[Demonstrations](#)

[Video Tutorials](#)

[Indoor GIS Community](#)

[Learning Plans](#)

Please Share Your Feedback



https://survey123.arcgis.com/share/e6d8e0920ccf4acd91c08d3a96c64f65?field:SESSION_ID=115

shorturl.at/hotvN



Q&A



2022 Indoor GIS Product Capabilities Matrix (v2.0c)



ArcGIS Indoors



ArcGIS IPS

COMPONENT NAME		MAIN CAPABILITIES	ARCGIS ENTERPRISE DEPLOYMENT NOTE	ARCGIS ONLINE DEPLOYMENT NOTE
IPS PRODUCT	ArcGIS IPS *	Enable and Configure Indoor Positioning “blue dot”	Add-on product to ArcGIS Indoors Maps Named Users not included IPS User Type included	
		Support Bluetooth Low Energy (BLE) Beacons		
		Enable real-time indoor wayfinding **		
		Enable real-time indoor location sharing & tracking		
INDOORS PRODUCTS	ArcGIS Indoors Maps*	Enable users to use Android or iOS native mobile indoor map	ArcGIS Enterprise 10.9.1 and later recommended	Current release support (Unlimited) Editor User Type for • Indoors Viewer, Kiosks, and Mobile
		Enable Indoor Viewer’s kiosk-mode for stationary devices		
		Enable web-based Indoor Viewer App		
		Enable route navigating for Viewer App and Mobile Map **		
		Create and populate ArcGIS Indoors Information Model		
		Import BIM and CAD floorplan drawings to Indoor Data		
		Generate Occupants, Point of Interest, and Event Data		
	ArcGIS Indoors Pro * (Desktop-use only. Available capabilities highlighted in Blue)	Configure Indoors Categories and Launch Actions	ArcGIS Enterprise 11 (Summer 2022) • New “Indoors User” User Type for • Indoors Viewer, Kiosks, and Mobile	ArcGIS Online (Summer 2022) • New “Indoors User” User Type for • Indoors Viewer, Kiosks, and Mobile
		Configure Floor-aware maps and layers		
		Create and Configure Indoor Network Data		
		Design Space Planning Assignment		
	ArcGIS Indoors Spaces *	Enable Space Planner App	Add-on product to ArcGIS Indoors Map Creator User Type (or higher) allows to create new space plans Editor User Type (or higher) allows to edit space plans ArcGIS Enterprise 11 (Summer 2022) “Indoors User” User Type (or higher) to view space plans	
		Allow users to use workspace reservation ***		
		Enable and allow Microsoft Office 365 Email system ****		
		Allow admin to change and modify staff’s office assignments		
		Allow users to filter rooms based on equipment		
ORGANIZATION MUST DECIDE ARCGIS ONLINE OR ENTERPRISE LICENSE DEPLOYMENT OF THE INDOOR LICENSE				

* Annual subscription license only, and ArcGIS Pro is not included

** "Wayfinding": Process of orienting and traveling

** "Navigating": Specific guidance from starting point to a destination

*** Enables reservations of meeting rooms and office hotels inside the Viewer and Mobile

**** Requires Office365 and resource mailbox setup of each space

Last Revision: 2022. 3. 28. ArcGIS Indoors and ArcGIS IPS - Productization Plan - Version 2.0.c

2022 Esri Indoor GIS Products and the new License based on
ArcGIS Pro 2.9
ArcGIS IPS 1.0
ArcGIS Online 9.3
ArcGIS Enterprise 10.9.1
ArcGIS Runtime SDK 100.13



Thank You

Jinho Kang

Sr. Solution Engineer

Smart Cities, Indoor GIS

jkang@esri.com

Marco Viola

Sr. Account Executive

Smart Cities, Indoor GIS

mviola@esri.com



