

ArcGIS Solutions for State and Local Government: An Overview

Michele Lundeen

Scott Oppmann



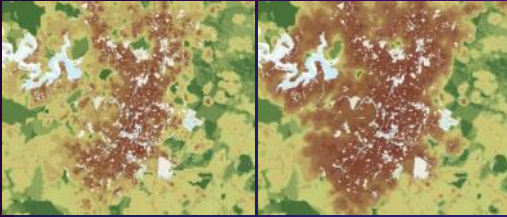
esri

THE
SCIENCE
OF
WHERE®

2021 ESRI USER CONFERENCE

Using ArcGIS to Understand and Mitigate Challenges

Housing Forecasting



Austin, TX

Urban Design



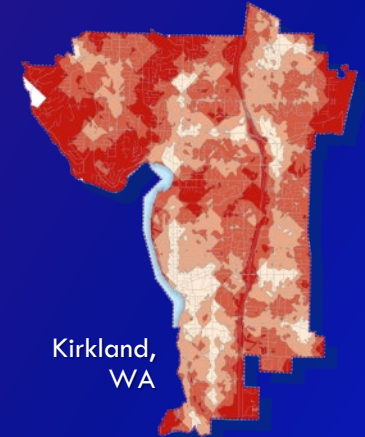
Frisco, TX

Redevelopment



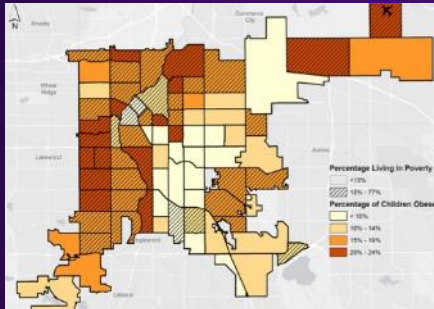
Detroit, MI

Walkability Score



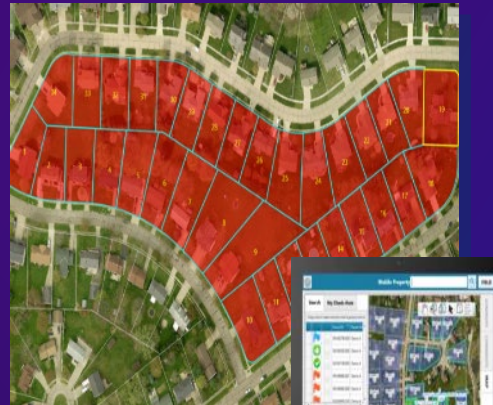
Kirkland,
WA

Childhood Obesity
and Poverty



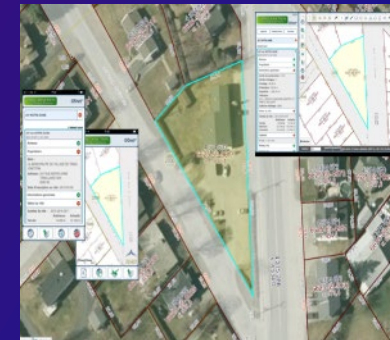
Denver, CO

Property Appraisals



Ohio

Tax Assessment



Quebec, Canada



America's Aging Infrastructure: What to Fix, and Who Will Pay?

Homelessness keeps rising in Seattle and King County

THE COST OF THE OPIOID CRISIS

Trump says he wants an economic revival. He could start by tackling an epidemic.

The Billion Dollar Crisis in Outdated Government Technology

World's population increasingly urban with more than half living in urban areas

Voting Problems Surface as Americans Go to the Polls

Revitalizing Urban Neighborhoods: Building Blocks for the Future of America's Cities

The Evolution Of Smart Cities

Crime and murder fell in America's most populous cities in 2018

The 'Silver Tsunami' Has Arrived in Government

Minneapolis Police Use Force Against Black People at 7 Times the Rate of Whites

How To Solve Vaccine Hesitancy, Refusal and Access in Communities Like Detroit

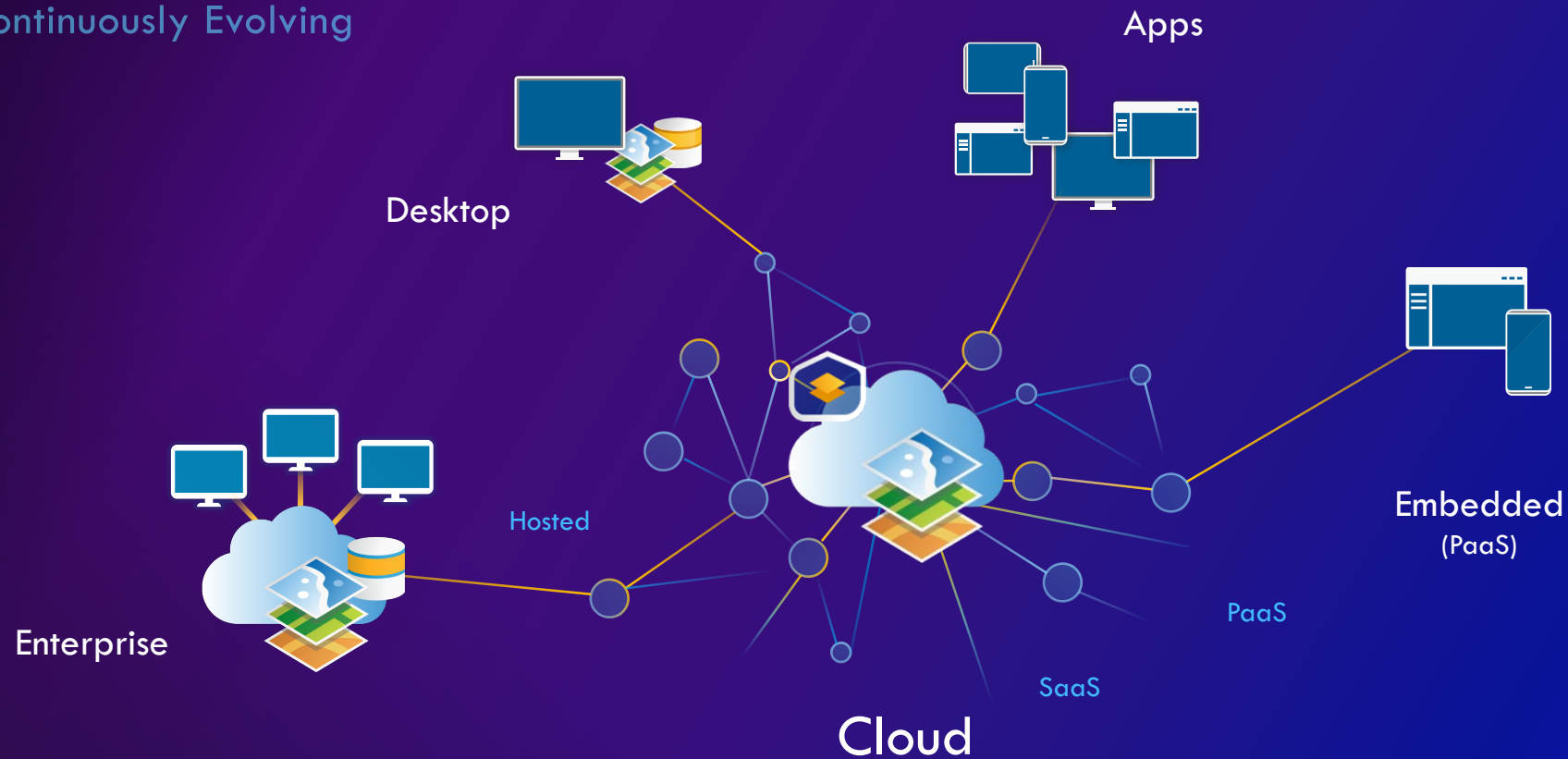
Government GIS Implementations

Must evolve to meet today's challenges

- Focus on business solutions that meet organizational needs
 - Include broad suite of solutions that address diverse information needs
 - Flexible so they can respond to needs as they arise
 - Provide internal and external stakeholders with digital experiences they expect
 - Incorporate more sophisticated GIS capabilities (AI/ML, IoT, etc.)
 - Delivered on modern technology that can be sustained with limited resources
- 
- A stylized, low-poly illustration of a mountain range in shades of blue and purple, located in the bottom right corner of the slide.

ArcGIS – A Comprehensive System

Continuously Evolving



... For Managing, Sharing and Applying
Geographic Information

ArcGIS Solutions | Industry-Specific Maps and Apps

Intersecting Business and Technology

- Extensive capabilities
- Developed with community
- Come with ArcGIS
- Fully supported



ArcGIS Solutions

Mission

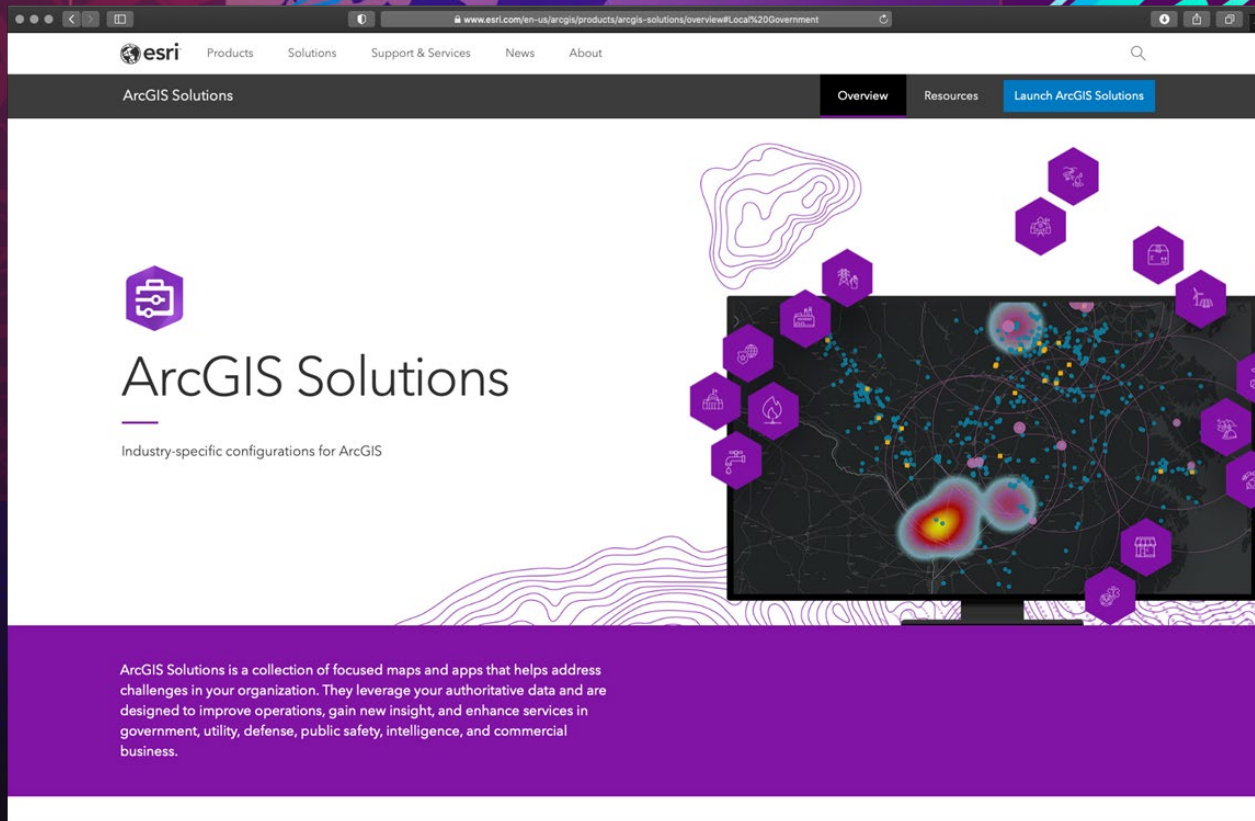
- Solve common business needs
 - Integrated workflows, focused maps and apps.....
- Leverage your investment in location-based data and ArcGIS
 - Roadmap for standard capabilities, improve service delivery, expand reach, innovation....
- Stay current and avoid legacy technology
 - Leverage new ArcGIS offerings, maximize available resources, focus on complex or unique problems....
- Work collaboratively with community
 - Best practices, industry tradecraft....



Helping Organizations

- **Manage authoritative location-based**
 - Utility Data Management, Address Data Management, 3d Basemaps, Road Closures, Community Parcels, etc.
- **Understand community conditions and create understanding**
 - Crime Analysis, Neighborhood Early Warning, Nighttime Flow Analysis, etc.
- **Deploy location-based operational systems**
 - Dam Safety, Election Management, Water Outage, EM Operations, Mosquito Control, Capital Project Planning, etc.
- **Visualize operational and strategic performance**
 - Performance Management, Citizen Problem Reporter, Fatal and Serious Crash Dashboard, etc.
- **Engage the public** (when appropriate)
 - Citizen Problem Reporter, Adopta, Election Results, Vision Zero, Recreation Outreach, etc.



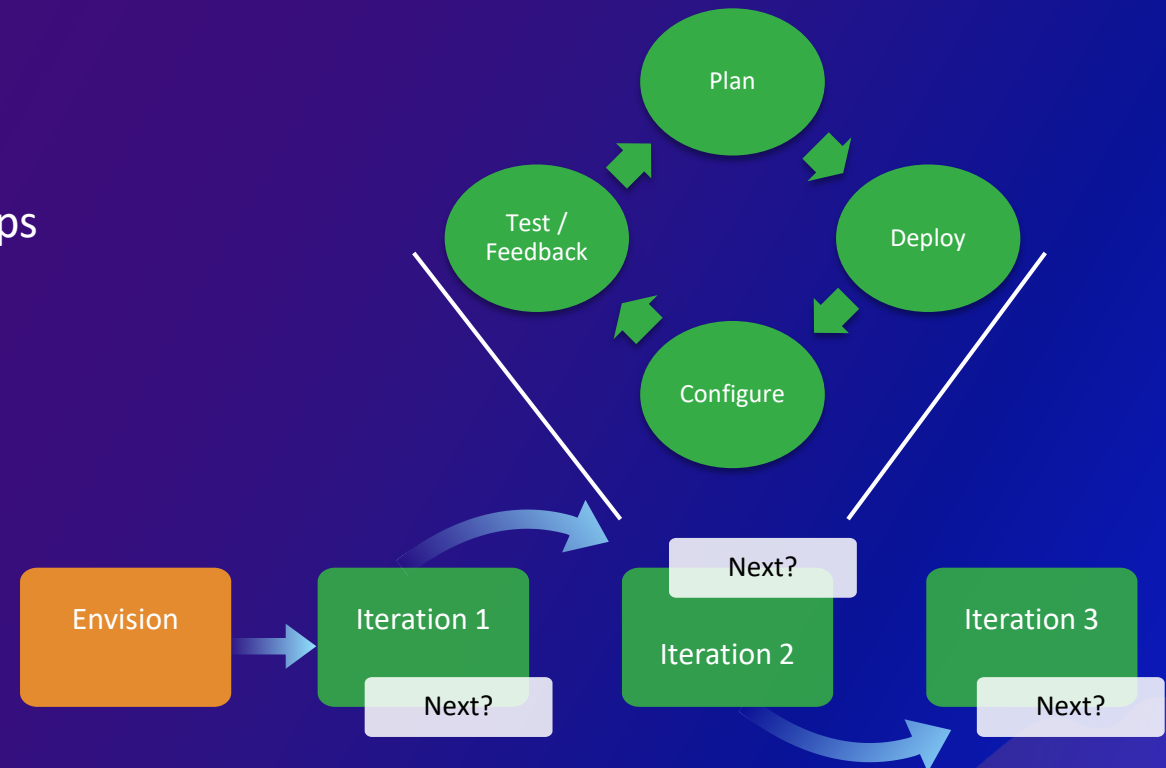


Show Me!

How do I get started?

Leverage solution offerings to maximize technical expertise and minimize deployment time

- Deploy quick wins
 - Configure your mapping platform
 - Align with strategic business needs
 - Implement one or more focused maps and apps
 - Organize your data
 - Iterate....



...embrace an agile implementation approach

Special Event Permit



Enter the name of the special event*

Enter the name of event

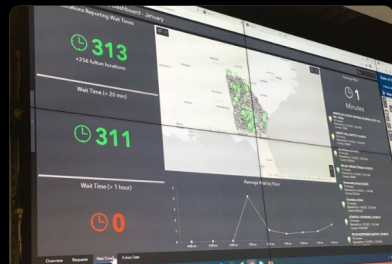
Hamblen County Election Results *Results unofficial until certified

Election results will be updated as quickly as possible. First totals will include countywide early voting. Countywide totals and precinct totals will be updated as results are reported.



Gabriel Sterling
@GabrielSterling

Smooth election so far this morning across Georgia. We are at about an average of 1 minute wait times. The longest we are aware of is about 20 minutes. Get out and vote. It's quick and easy. #gapol



12:07 PM · Jan 5, 2021 · Twitter

City of Hendersonville Citizen Reporter App

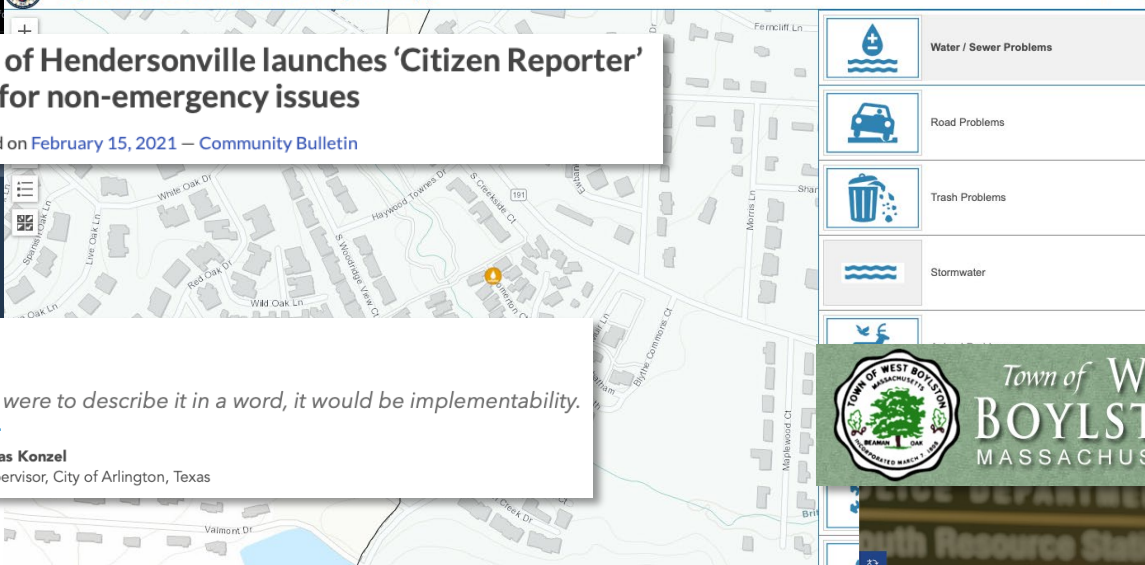
City of Hendersonville launches 'Citizen Reporter' app for non-emergency issues

Posted on February 15, 2021 — Community Bulletin



If I were to describe it in a word, it would be implementability.

Thomas Konzal
IT Supervisor, City of Arlington, Texas



Ballots Cast

24,748

Registered Voters

37,534

Homeless Count Dashboard

Adults 333

Children 14

slimgin
@slim_gin_gis

Are you a senior manager in local government? Did you know anyone can rip out solutions using templates like these, often in minutes? What has your gov #GIS capability delivered to your constituents lately? 0? Maybe it's time to #Slimgin Your Workforce.



6:50pm · 31 Jan 2019 · Twitter for Android

1 Reply · 6 Retweets · 1 Likes

Michael Schonlau
@MichaelSchonlau

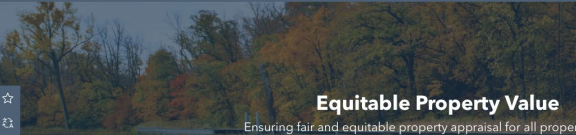
Deployed ESRI's Damage Assessment solution (solutions.arcgis.com/emergency-mana...) yesterday for first responders and local government staff to capture preliminary roadway and building damage assessment for #nebraskaflood #flood2019 @esriSurvey123 @EsriSLGov @DouglasCoGIS @DouglasCountyNE



6:12 AM · 19 Mar 2019 from Omaha, NE

10 Retweets · 45 Likes

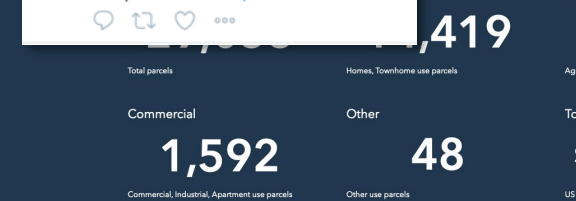
Equitable Property Value | Polk County, Minnesota



Equitable Property Value

Ensuring fair and equitable property appraisal for all properties

Joe Thick @jophisthick 21h
Using Esri's Road Closure template and data from local agencies ArcGIS Online environment's, we were quickly able to compile critical information for first responders and the public. lnkd.in/g/ea49DwD



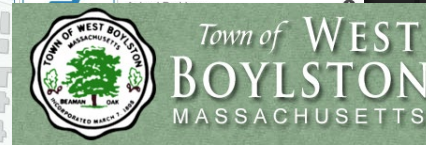
ADOPT A DRAIN #DRAINDEFENDER

Greetings, Drain Defender!

Since October 2018, 507 residents have adopted 736 drains throughout Naperville. Over the past two years, with the help of YOU, we have seen noticeably less street flooding and ponding water through rain and fast-melting snow events.

We've seen a steady increase of volunteers over the years, but we're ready to grow and we need your help. It's time to share your love of drains by referring your friends and family members. Not only will you live in and love, but we're here waiting with rewards!

For a chance to win, sign up for a unique referral code to share with other Naperville residents. The City will select two winners each month; one participant who referred someone to the program and one who submitted a photo after cleaning their drain(s). Rewards include brightly colored Adopt A Drain #DrainDefender t-shirts that keep participants visible when cleaning their drains, as well as free yard waste disposal directions below to enter and visit www.naperville.il.us/adoptadrain for more information about this new program.



Police Transparency

Increase trust and legitimacy in the community

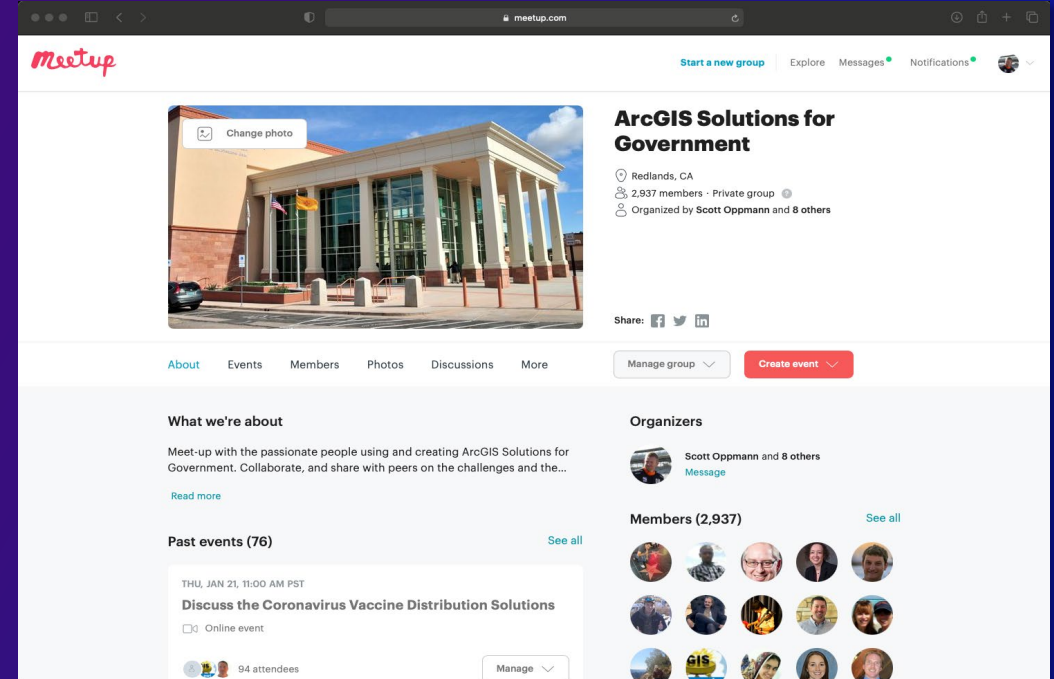
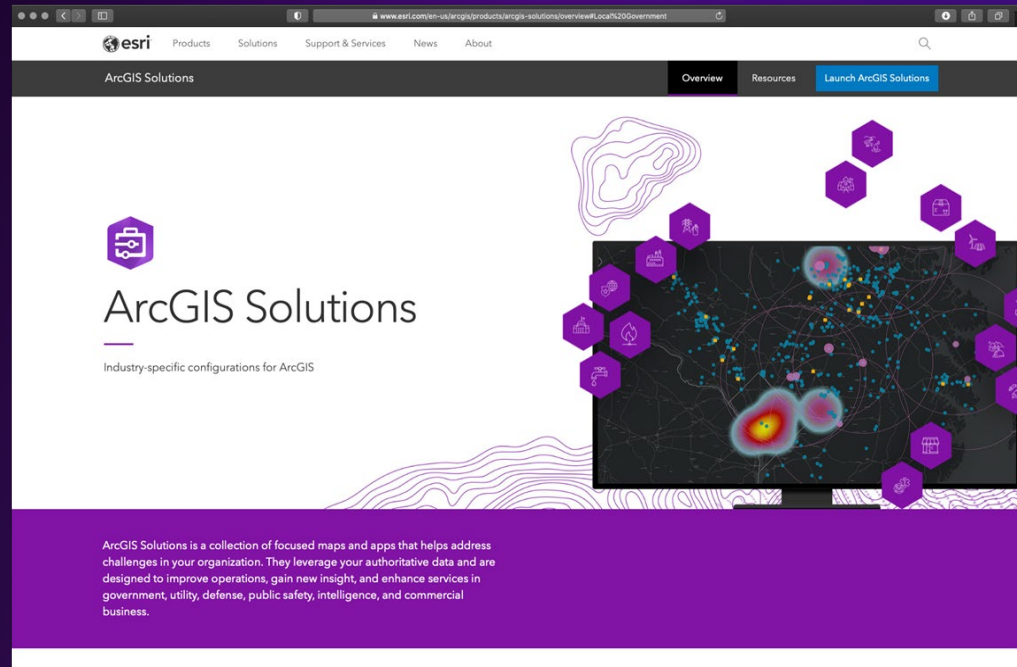
Serving with greater transparency, a representative workforce and strategies developed with the community.

Message from the Chief

The Asheville Police Department is committed to improving transparency, building relationships, and improving trust with the residents of our

The Community

It's not just about the technology



ArcGIS Solutions Roadmap

Last update: May 2021

Near-term

- Civil Support
- Emergency Debris Management
- District Energy Data Management for ArcGIS Enterprise
- Electric Data Management for ArcGIS Enterprise
- Emergency Management Operations
- Fire Incident Dashboard
- Initial Damage Assessment
- Lead Service Inventory
- Outage Damage Assessment
- Sewer Data Management for ArcGIS Enterprise
- Stormwater Data Management for ArcGIS Enterprise

Mid-term

- Animal Care and Control
- Communication Walkout Surveys
- District Energy Data Management for ArcGIS Online
- Electric Field Inspections
- Equity Lens
- Forest Timber Inventory
- Gas Leak Survey
- Gridded Reference Graphic
- My Trash Services
- Park Infrastructure Management
- Recreation Outreach
- School Locator
- Sign Management
- Tree Management
- Water Distribution Field Inspections
- Winter Weather Operations

Long-term

- Addiction and Mental Health Outreach
- Broadband Accessibility
- Combined Sewer Data Management
- Community Data Aggregation
- Community Risk Reduction
- Curb Management
- Dam Safety
- Economic Development
- Equitable Property Value
- Fire Accreditation
- Fire Pre-Incident Planning
- Neighborhood Stabilization
- Next Gen CompSTAT
- Pavement Condition Assessment
- Sidewalk Management
- Sewer Field Inspections
- Water Outage
- Wildlife Monitoring

Key Takeaways

- ArcGIS includes a rich set of solutions you can leverage across many business needs
- Promote modern deployment patterns and ArcGIS capabilities
- Work collaboratively with community
- Enable you to solve common business problems
- Deploying ArcGIS Solutions has never been easier



Thank you

Be innovative, aware, and know you are not alone

Scott Oppmann, Manager
ArcGIS Solutions

Michele Lundeen, Solution Engineer Team Lead
State and Local Government Business Development

 <http://solutions.arcgis.com/>

 <http://meetup.com/ArcGIS-for-Government/>

Please use the survey link below to share your feedback on this session





esri®

THE
SCIENCE
OF
WHERE®