

ArcGIS Enterprise: Getting Started

Hannah Shumway

Thomas Edghill



esri | THE
SCIENCE
OF
WHERE®

2021 ESRI USER CONFERENCE



Introduction to ArcGIS Enterprise

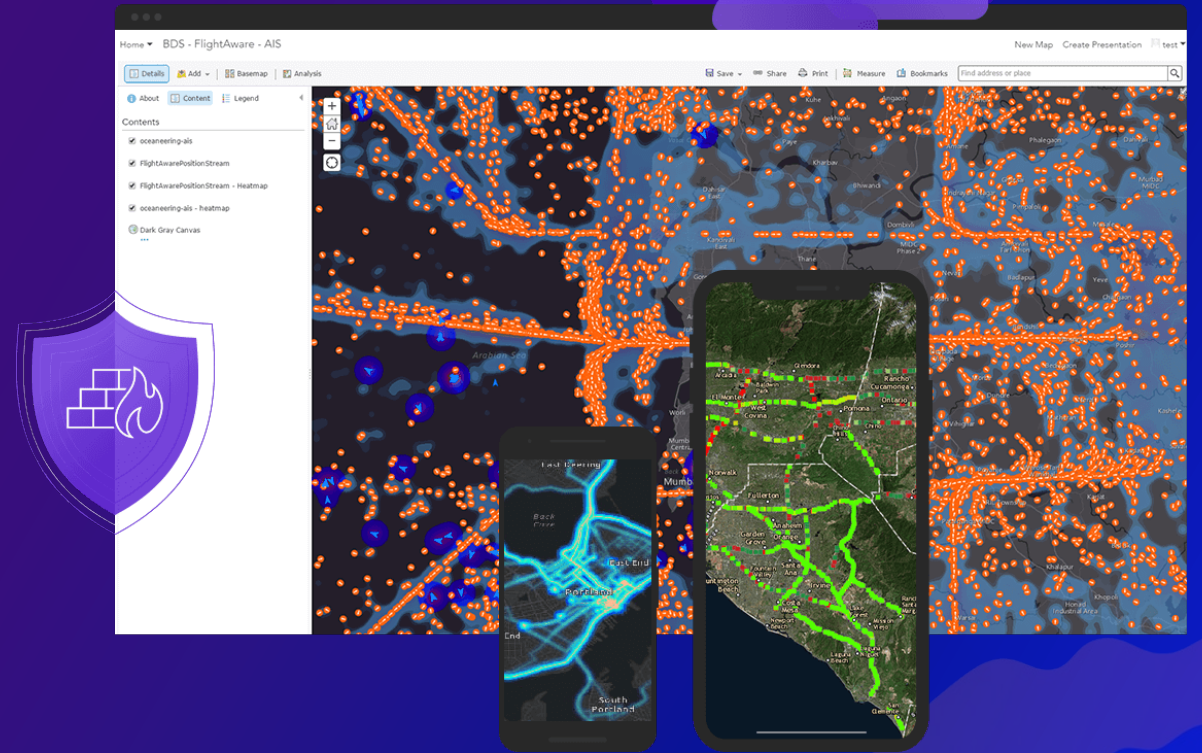
Product Overview

Key Admin Workflows

ArcGIS Enterprise is the foundational system for mapping and visualization, data management, spatial analysis, and application building.

It is the backbone for your GIS workflows. It is designed to integrate with ArcGIS Pro, ArcGIS Online, and Esri's suite of applications.

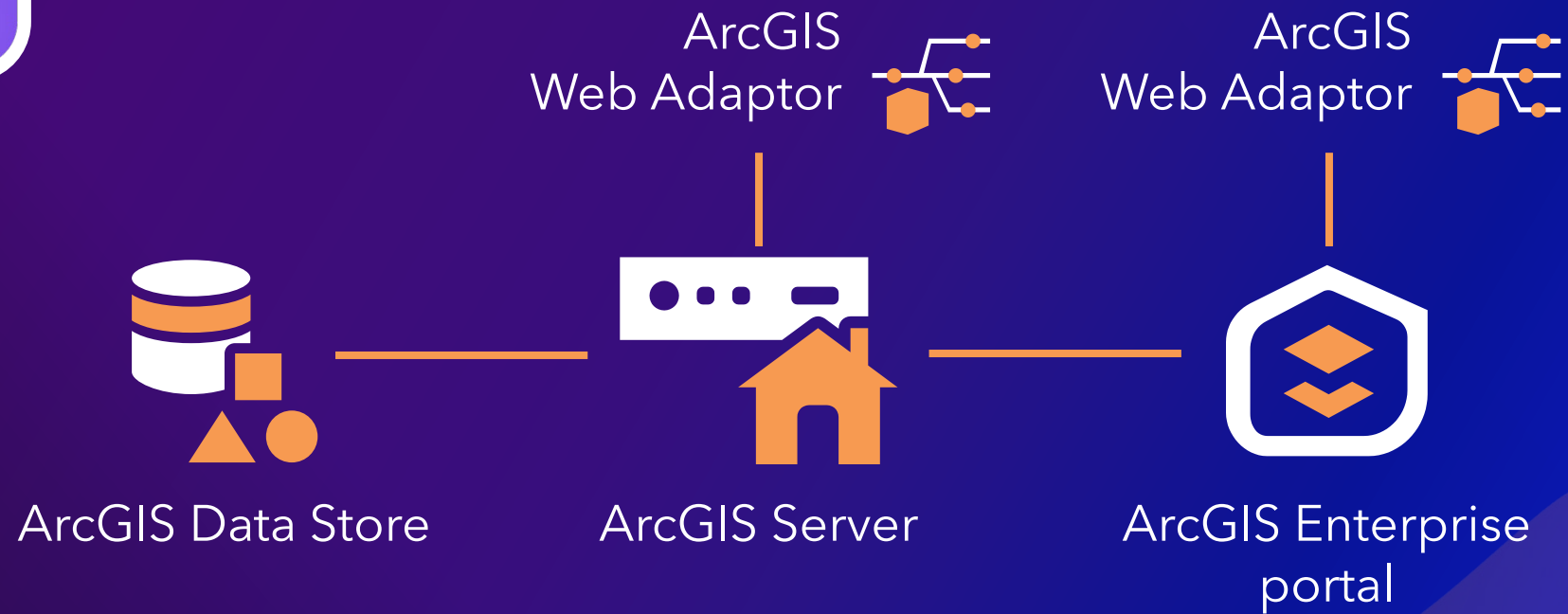
ArcGIS Enterprise is installed on infrastructure you control, whether in the cloud or on-premises, and is scalable to meet your needs.



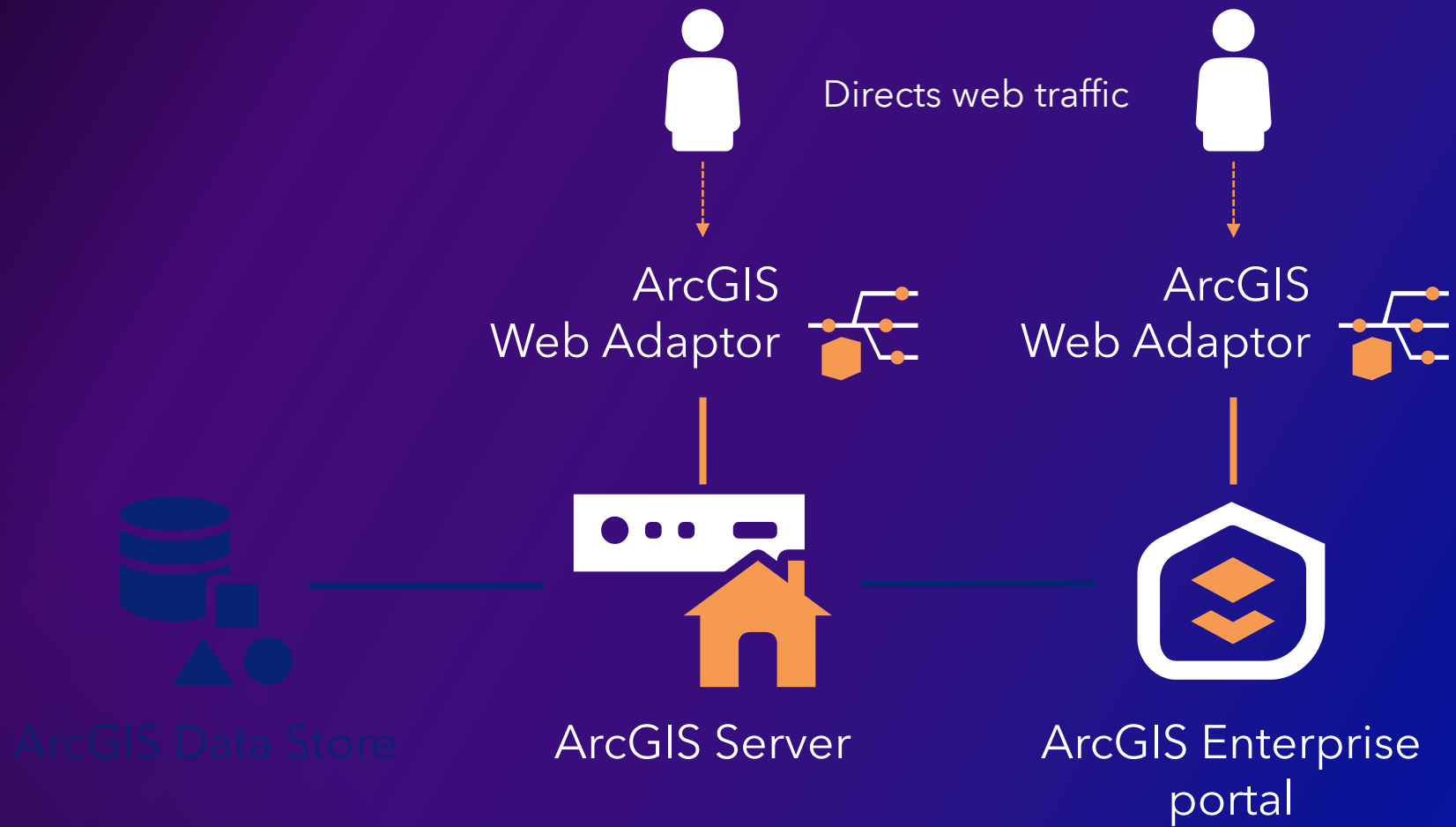
ArcGIS Enterprise components

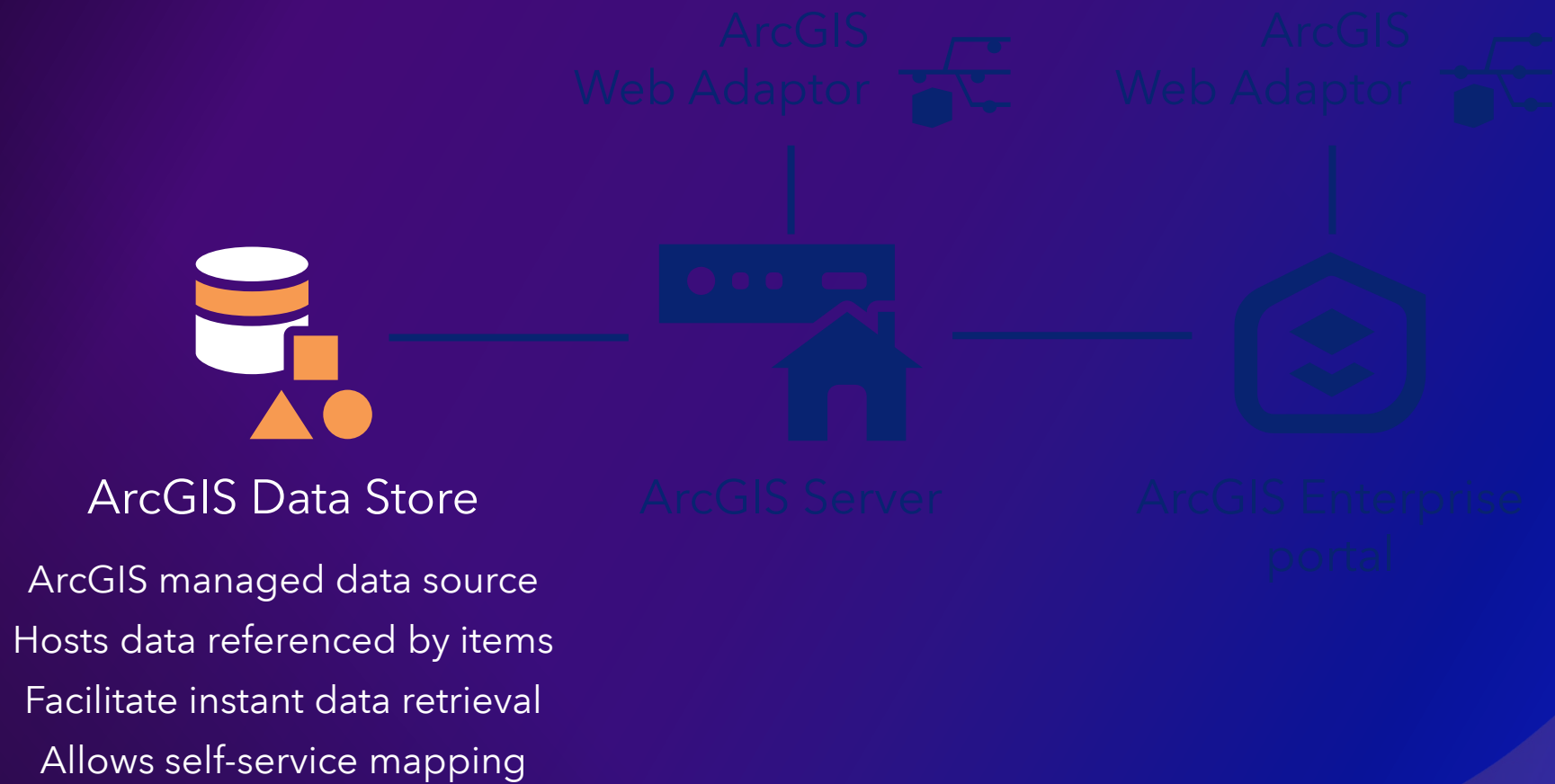


ArcGIS Enterprise base deployment



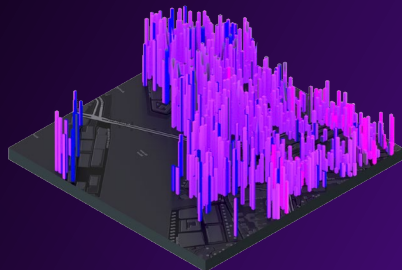








Run GIS services that power your items
Handle all requests
(zoom on a map, find a location, analysis, and more)
Scale processes based on traffic
Connect to user managed data
Hosting server



GeoAnalytics
Server

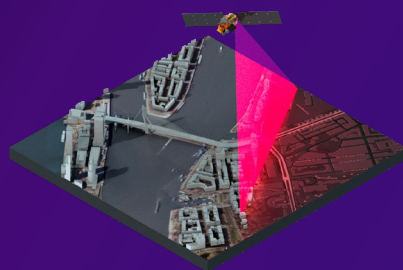
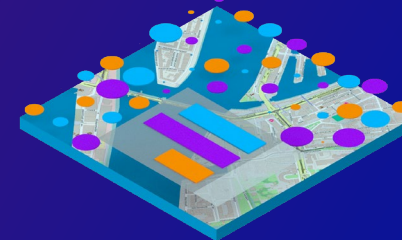


Image
Server



GeoEvent
Server



Notebook
Server



ArcGIS Data Store

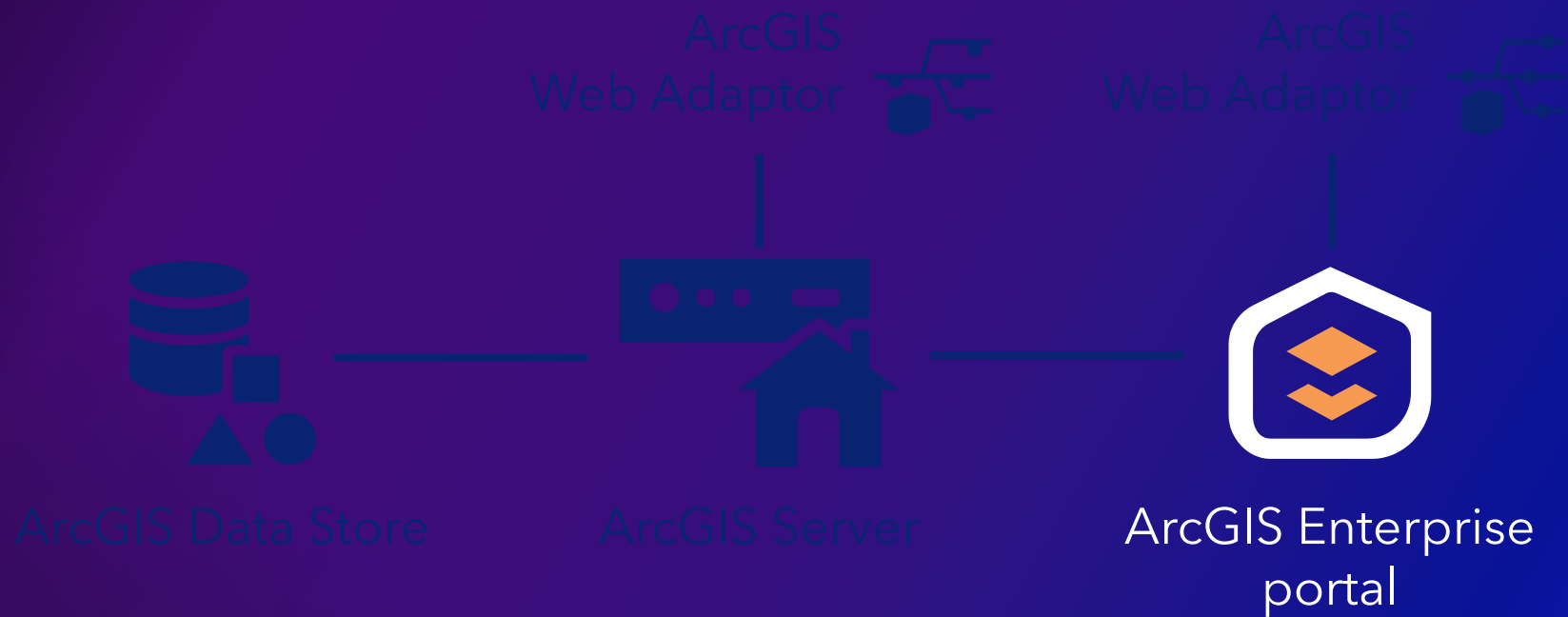


ArcGIS Server

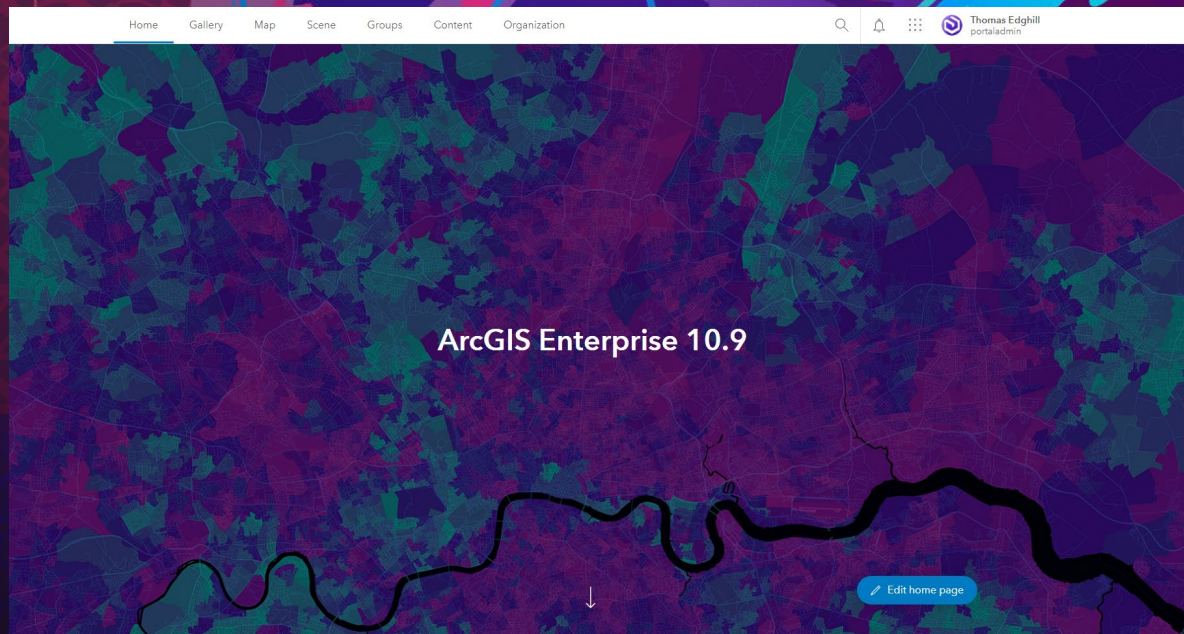


ArcGIS Enterprise
portal

ArcGIS Server can be licensed with additional
server roles, each with its own respective
capabilities.



- Manage users and licenses
- Share content from desktop GIS
- View and work with content in a map viewer
- Bring in GIS items from web
- Produce outputs (maps, analysis, apps)



Key Admin Workflows: Members & Groups

Thomas Edghill

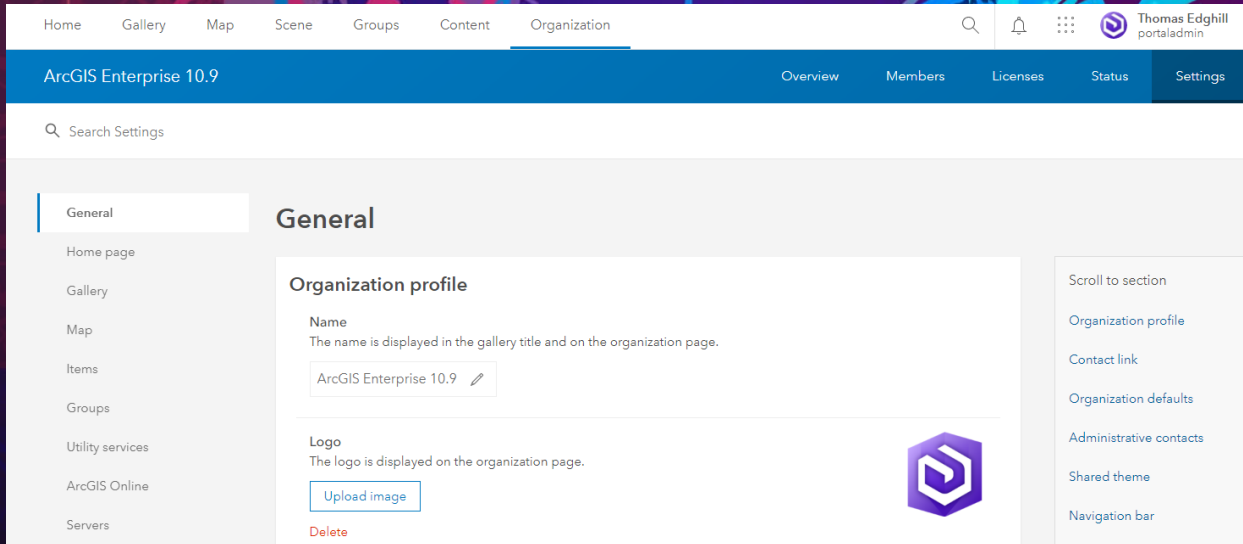
Recap: Adding members and groups to your Enterprise portal

- Adding Members
 - Work with Built-in portal accounts & Organization-specific account
 - Adding members one-at-a-time, or in bulk
 - Configure user type, role, licenses, group membership and settings while adding
- Groups
 - A way to organize items and control member access
 - Many configuration options such as:
 - Who can view or join the group?
 - Who can contribute to the group?
 - What items can members update in the group?
- Administrative Groups
 - A group where members are unable to leave once added
 - Only the group owner or a group manager can remove members
 - Effective for easy membership control

Key Admin Workflows:

Organization Settings

Thomas Edghill



The screenshot shows the ArcGIS Enterprise 10.9 Organization Settings page. The top navigation bar includes links for Home, Gallery, Map, Scene, Groups, Content, and Organization. The Organization page has sub-tabs for Overview, Members, Licenses, Status, and Settings. The Settings page has a search bar and a left sidebar with links to General, Home page, Gallery, Map, Items, Groups, Utility services, ArcGIS Online, and Servers. The General tab is selected, showing the Organization profile section. The Name field is set to 'ArcGIS Enterprise 10.9' and the Logo field is set to the ArcGIS logo. The page also includes a 'Delete' link and a 'Scroll to section' sidebar.

Home Gallery Map Scene Groups Content Organization

ArcGIS Enterprise 10.9 Overview Members Licenses Status Settings

Search Settings

General

Home page

Gallery

Map

Items

Groups

Utility services

ArcGIS Online

Servers

General

Organization profile

Name
The name is displayed in the gallery title and on the organization page.

ArcGIS Enterprise 10.9

Logo
The logo is displayed on the organization page.

Upload image

Delete

Scroll to section

Organization profile

Contact link

Organization defaults

Administrative contacts

Shared theme

Navigation bar

Recap: Key settings when administering ArcGIS Enterprise

- Security
 - Confirm security policies
 - Refine password policy
 - Establish advanced login and authentication settings
 - Set Information banner & Access notice
- General/Home Page
 - Configure organization look and feel
 - Manage navigation bar visibility
- Servers
 - Validate and add ArcGIS Server sites for expanded capabilities
- Member Roles
 - Fine-tune what your users can do
- New Member Defaults
 - Choose default user types, roles, licenses and groups for all new members



Key User Workflows

Getting started with managing, sharing, and analyzing your data in ArcGIS Enterprise

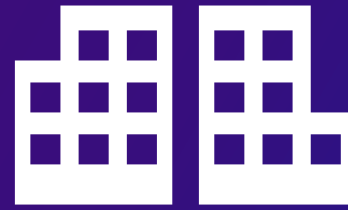
Sharing Options in the Enterprise portal



Not shared



Shared with
one or more
groups



Shared with
your whole
organization



Shared with
everyone

Most secure
Least access

Least secure
Most access

Content

My Content My Favorites My Groups My Organization Living Atlas

Add Item Create Search Logistics Table Date Modified Filter

Folders

Filter folders

- All My Content
- HShumway_wdintel
- Dashboards
- Enterprise
- Imagery
- Insights
- Logistics

Filters

Categories

No Categories Yet

Categories allow members to organize items consistently and provide a simple way to browse content in the organization.

Set up organization categories

1 - 12 of 12 in Logistics

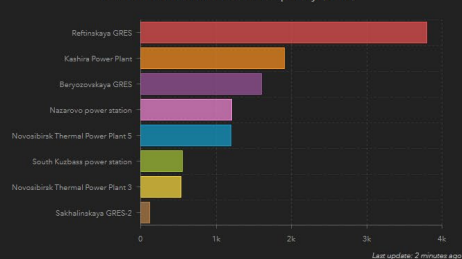
Title	Modified
<input type="checkbox"/> Russia Logistics Dashboard	Apr 29, 2021
<input type="checkbox"/> Russian Pipelines Feature Layer (hosted)	Jan 26, 2021
<input type="checkbox"/> Energy Infrastructure - Russia Web Map	Jan 26, 2021
<input type="checkbox"/> Exports_Crude_Russia Feature Layer	Jan 26, 2021
<input type="checkbox"/> Exports_Crude_Russia Feature Layer (hosted)	Jan 26, 2021
<input type="checkbox"/> Commodity Trade Table CSV	Jan 26, 2021
<input type="checkbox"/> Commodity Trade Tool	Jan 26, 2021
<input type="checkbox"/> Coal Power Plants Feature Layer (hosted)	Jan 25, 2021
<input type="checkbox"/> Coal Power Plants CSV	Jan 25, 2021
<input type="checkbox"/> Russian Pipelines Shapefile	Jan 25, 2021
<input type="checkbox"/> Russian Railroad Lines Feature Layer (hosted)	Jan 25, 2021
<input type="checkbox"/> Russian Railroad Lines Shapefile	Jan 25, 2021

Managing and sharing data in ArcGIS Enterprise

Hannah Shumway

Energy Infrastructure - Russia

Coal Fired Power Plants - Capacity (MW)



Railroad lines

6,885

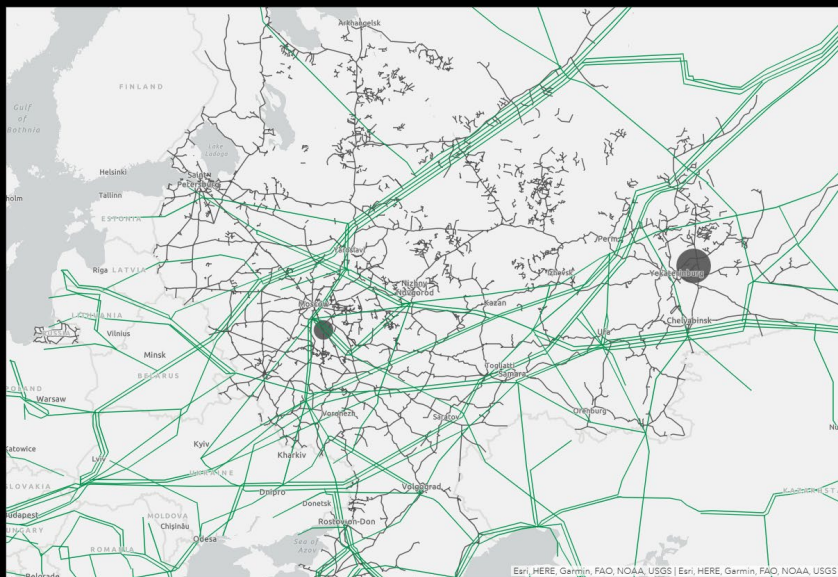
Last update: 2 minutes ago

Pipelines

153

completed or in work

Last update: 2 minutes ago



Analyzing data to create maps and applications in ArcGIS Enterprise

Hannah Shumway

Logs - Portal, Server, Data Store


ArcGIS Enterprise
portal


ArcGIS Server


ArcGIS Data Store

Portal Administrator Directory

[Home](#)


Site Root - /

Version: 10.8

Resources: [System](#) [Security](#) [Federation](#) [Logs](#) [Machines](#) [License](#) [Mode](#)

Supported Operations: [Export Site](#) [Import Site](#)

Supported Interfaces: [REST](#)

 **ArcGIS Server Manager**

Services Site Security **Logs**

[View Logs](#) [Error Reports](#) [Statistics](#)

[Printer Friendly View](#) | [Help](#) [Columns](#) [Delete Logs](#) [Settings](#)

View Log Messages

View log messages by querying based on the level, age and source of the messages and clicking Query.

Change the level of detail that the log messages are generated at by clicking Settings.

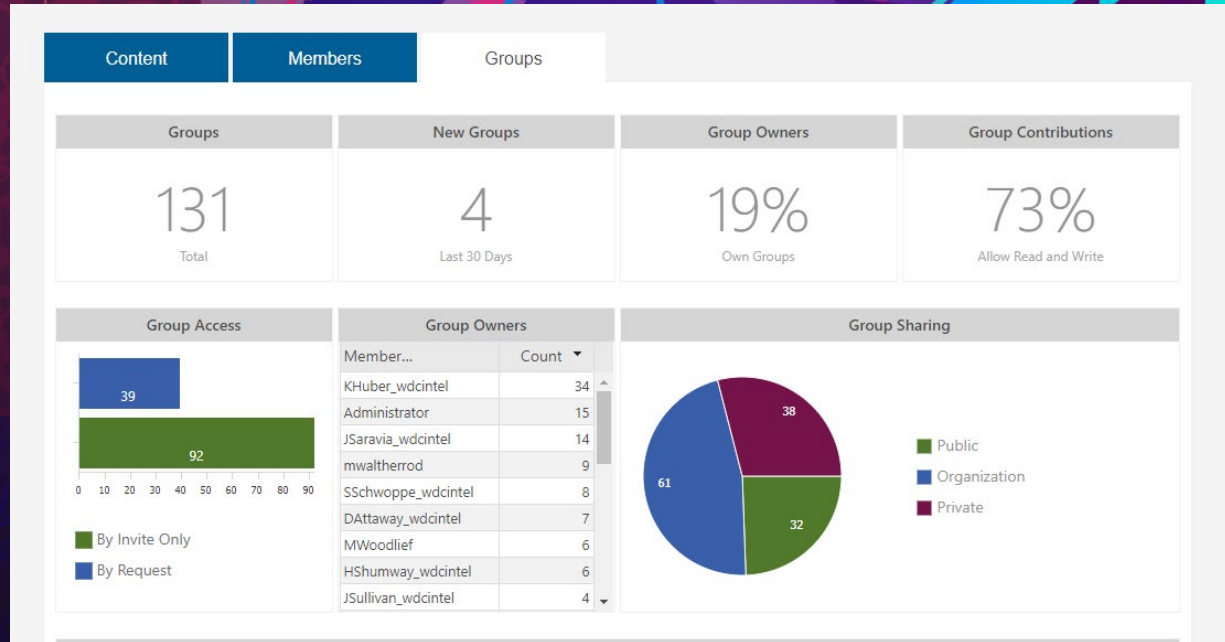
Log Filter: Age: Source: Machine: [Query](#)

All

Server Framework

ArcGIS Data Store

All Services



Monitoring your ArcGIS Enterprise

Hannah Shumway



Key User Workflows: Managing, sharing,
and analyzing your data in ArcGIS Enterprise

Monitoring Your Deployment: Licenses,
reports, and logs for examining usage and
system health

Resources

- Documentation
 - [ArcGIS Enterprise Essentials](#)
- Learn Lessons
 - [Get Started with ArcGIS Enterprise](#)
 - [Set up an ArcGIS Enterprise portal](#)
 - [Get Started with Map Viewer](#)
 - [Manage Data](#)
 - [Solve a Spatial Problem](#)
- Esri Training Courses
 - [Sharing GIS Content Using ArcGIS](#)
 - [ArcGIS Enterprise: Administration Essentials](#)
 - [ArcGIS Enterprise: Administration Workflows](#)





esri®

THE
SCIENCE
OF
WHERE®