



RYSTAD ENERGY

# MAP DATA DISTRIBUTION OVER GIS SERVICES AND THEIR PRESENTATION IN ARCGIS ONLINE

2021 ESRI USER CONFERENCE  
SAN DIEGO

**STEPHAN NYSVEEN – JULY 2021**

## Abstract

The GIS team in Rystad Energy manages global map data from the energy sector. This paper will present how we have succeeded to streamline the process from data updates, through service synchronization in a cloud to distribution and visualization in ArcGIS Web App, StoryMaps and Dashboards. All deployment is based on ESRI technology, such as ArcGIS Pro, Data Interoperability extension, ArcGIS Online, REST services, Web App Builder, StoryMaps and Dashboards.



# Objective

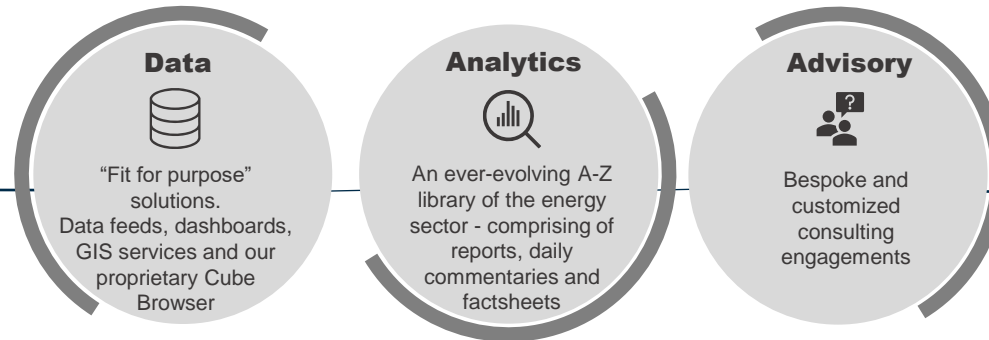
- Importance of spatial data and maps in company's business
- Use case scenario of deploying and using GIS technology
- Plans



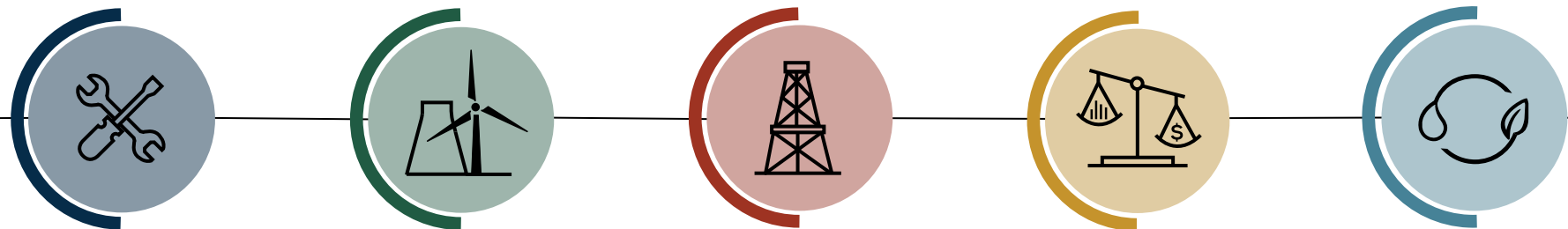
# Rystad Energy

Independent energy research and business intelligence company providing data, tools, analytics and consultancy services to clients exposed to the energy industry across the globe.

## Delivery channels



## Energy Themes



### Supply Chain

Demand and supply of the different service segments across all energy sectors, in terms of **units, spend & revenue.**

### Renewables & Power

Full coverage of **wind, solar and energy storage**, combined with our view on the future power mix and associated energy sources.

### Oil & Gas

Complete **reconciliation of activity, economics & ownership** within the global oil & gas industry.

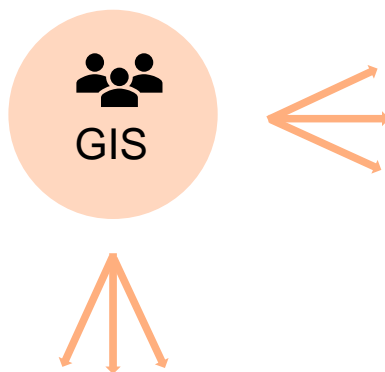
### Commodity Markets

Delivering in-depth **data and analysis** of the global oil and gas markets and their key drivers.

### Energy Transition

Providing **independent and fact-based perspectives** of how our energy systems are evolving.

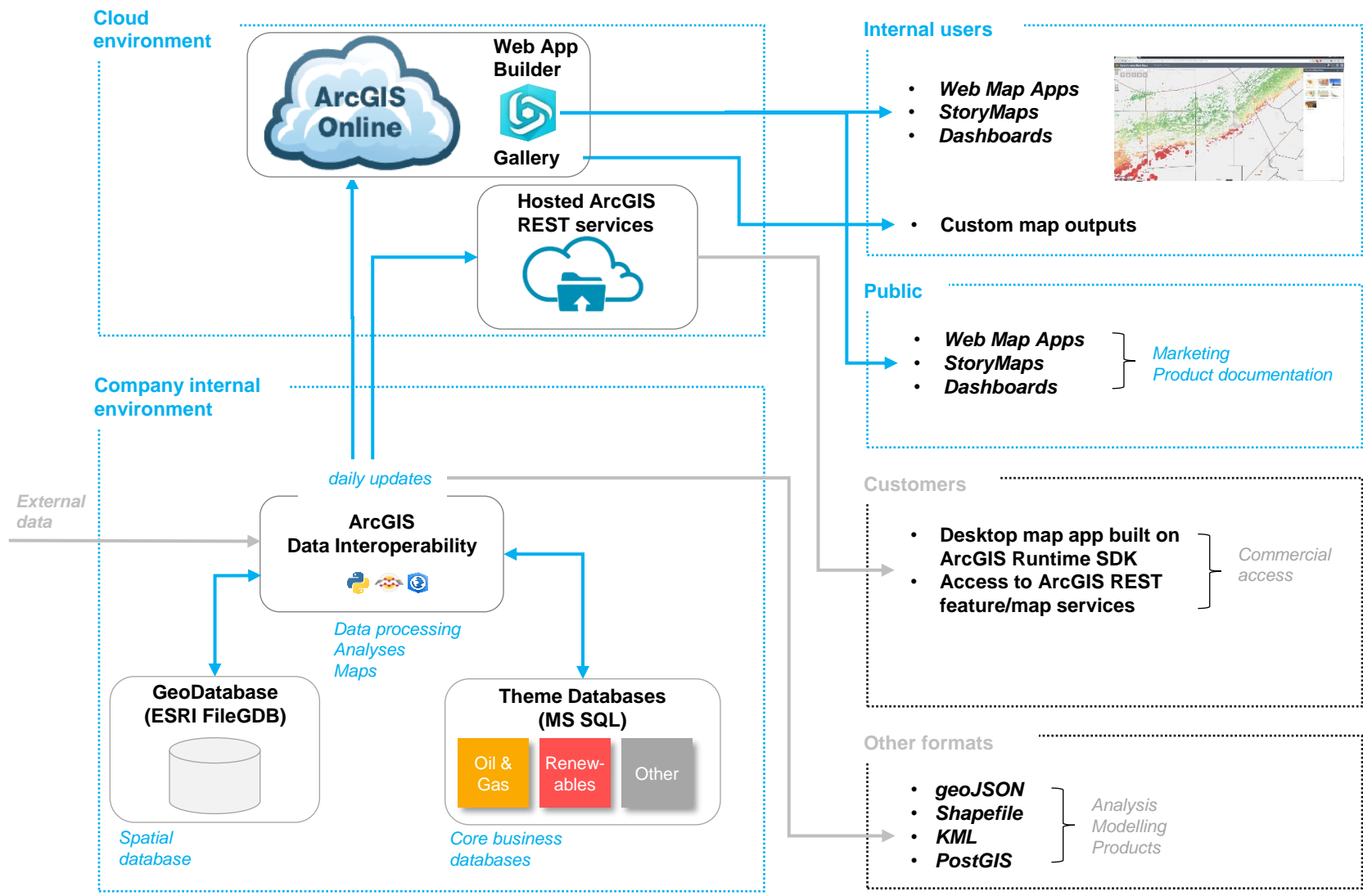
# GIS team



- Fields and discoveries
- Active licenses
- Upcoming block awards
  - Open for bidding
  - Bids under evaluation
  - Planned
  - Open door
  - Bidding concluded
  - Cancelled/suspended
- Blocks
- NCS BD Atlas maps
  - NCS BD Atlas comments
  - NCS BD Atlas discoveries and prospects
  - NPD additional layers
- UKCS BD Atlas maps
  - UKCS BD Atlas comments
  - UKCS BD Atlas discoveries and prospects
- Geology
  - Wells
    - Sediment thickness (Laske)
    - Major continental faults
    - Structural elements/basins
    - Structural elements/sub-bas
  - Structural elements/basins t
  - Assessment units (USGS)
  - Geoprovinces (USGS)
  - Global source rocks
  - Global source rocks by age
  - Global shale plays
  - Groundwater gas detection
  - Geological maps
- Climate palette
  - Climate hazards
  - Koeppen-Geiger climate classificati
- Infrastructure
  - LNG import terminals
  - LNG export terminals
  - Oil refineries
  - Ports
  - Supply bases
  - Oil pipelines
  - Gas pipelines
  - Texas pipelines
    - Transmission & distribution pipelines
    - Gathering pipelines
  - Seismic multient libraries
    - 2D detail surveys by contractor
    - 2D outlines by contractor
    - 3D surveys by contractor
  - Wind Cube maps
- Shale maps
  - Shale plays outlines
  - North American basins
  - North American sub-basins
  - Alberta Bakken Shale
  - Bakken Shale
    - Wellbore laterals
    - Bakken Shale acreage (all operators)
    - Bakken Shale acreage (split by segments)
  - Barnett Shale
  - Cardium Play
  - Duvernay Shale
  - Eagle Ford Shale
  - Fayetteville Shale
  - Haynesville-Bossier Shale
- Renewables resource
  - Global
    - Suitable areas for solar project development
    - Solar Index Heat Map
    - Onshore Wind Index Heat Map
    - Global horizontal irradiation (kWh/m2)
  - United States
    - United States - Global irradiation at optimum tilt (kWh/m2)
  - Australia
    - Australia - Mean horizontal exposure MJ/(m<sup>2</sup>\*d)
    - Australia - Average wind speed at 150 m
  - Electricity network
    - Australia
      - Australia - transmission substations
      - Australia - transmission power lines
      - Australia - distribution substations
      - Australia - distribution power lines

And many more ...

# Company GIS System Architecture



# Samples



Web app map

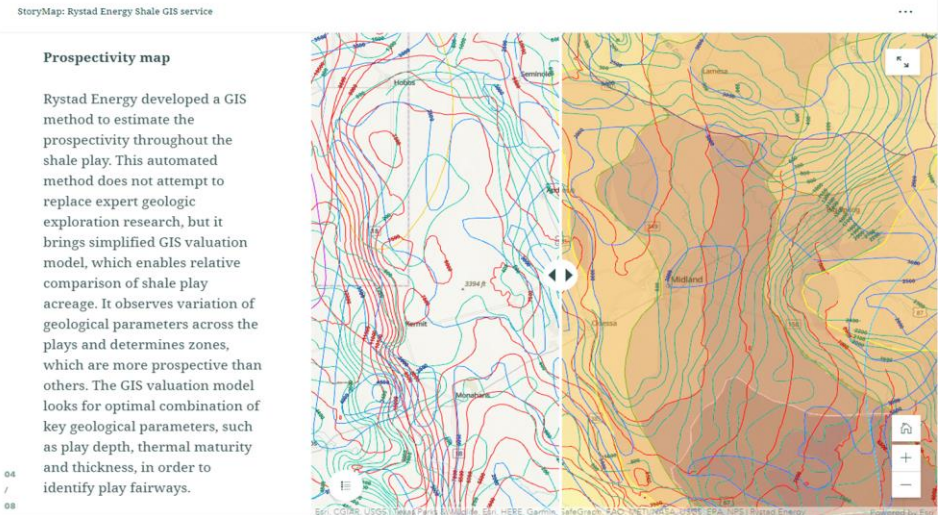
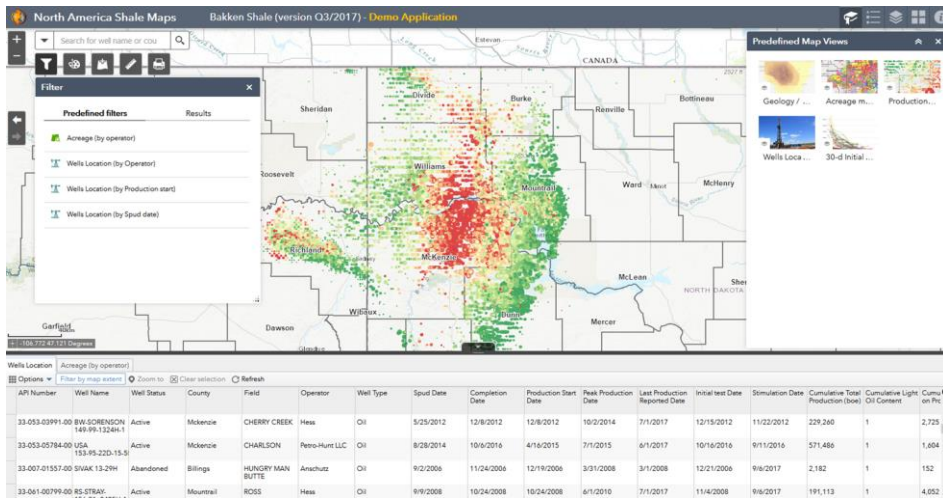
<https://re.maps.arcgis.com/apps/webappviewer/index.html?id=bc4406faf9a34c1f9569a1172afbe48d>

Dashboards

<https://re.maps.arcgis.com/apps/dashboards/37e7baabb0d04414b5abc637efe4483c>

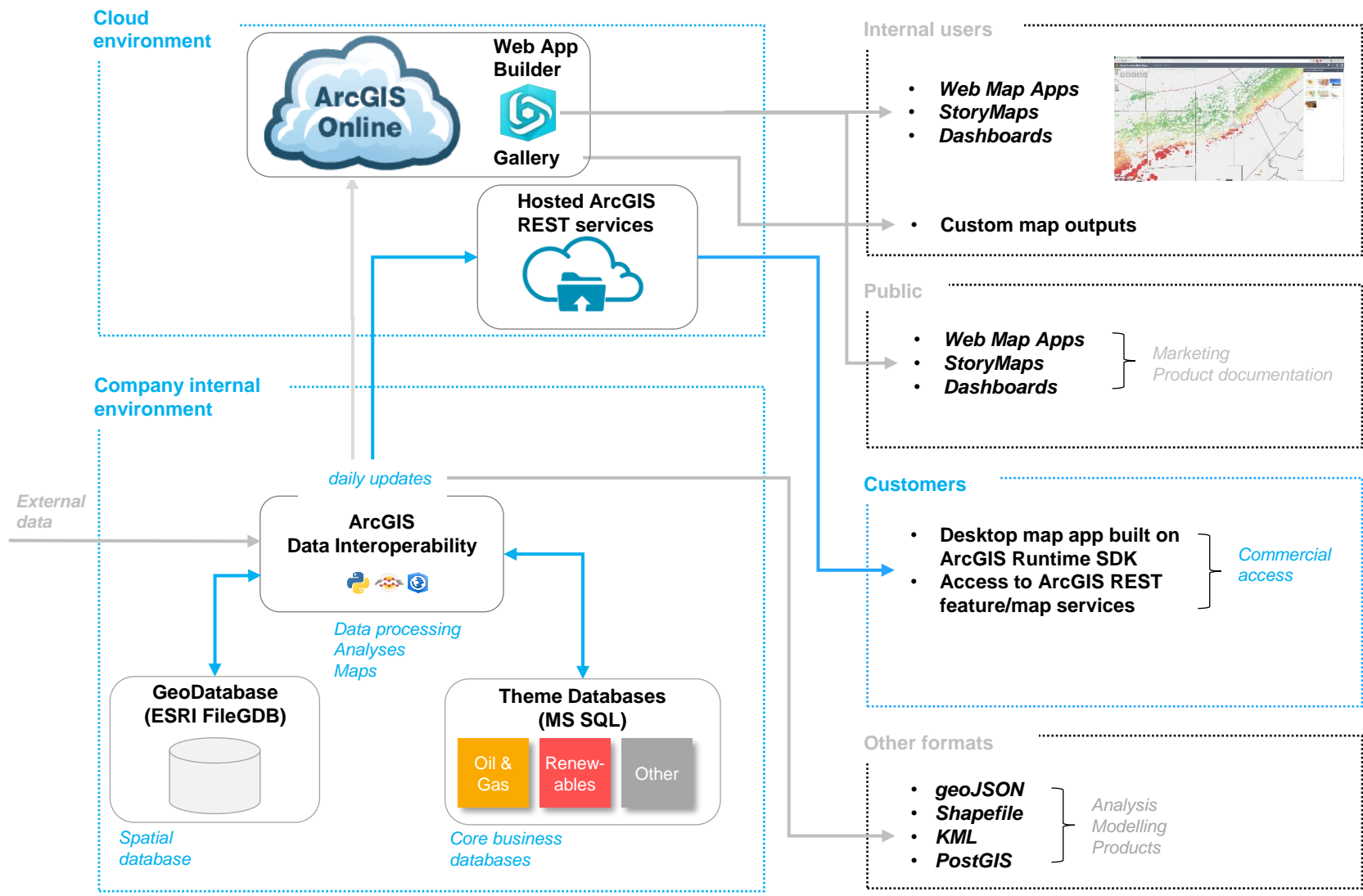
Storymap

<https://storymaps.arcgis.com/stories/a6d5c65542f8472eafd3d79df8f67552>



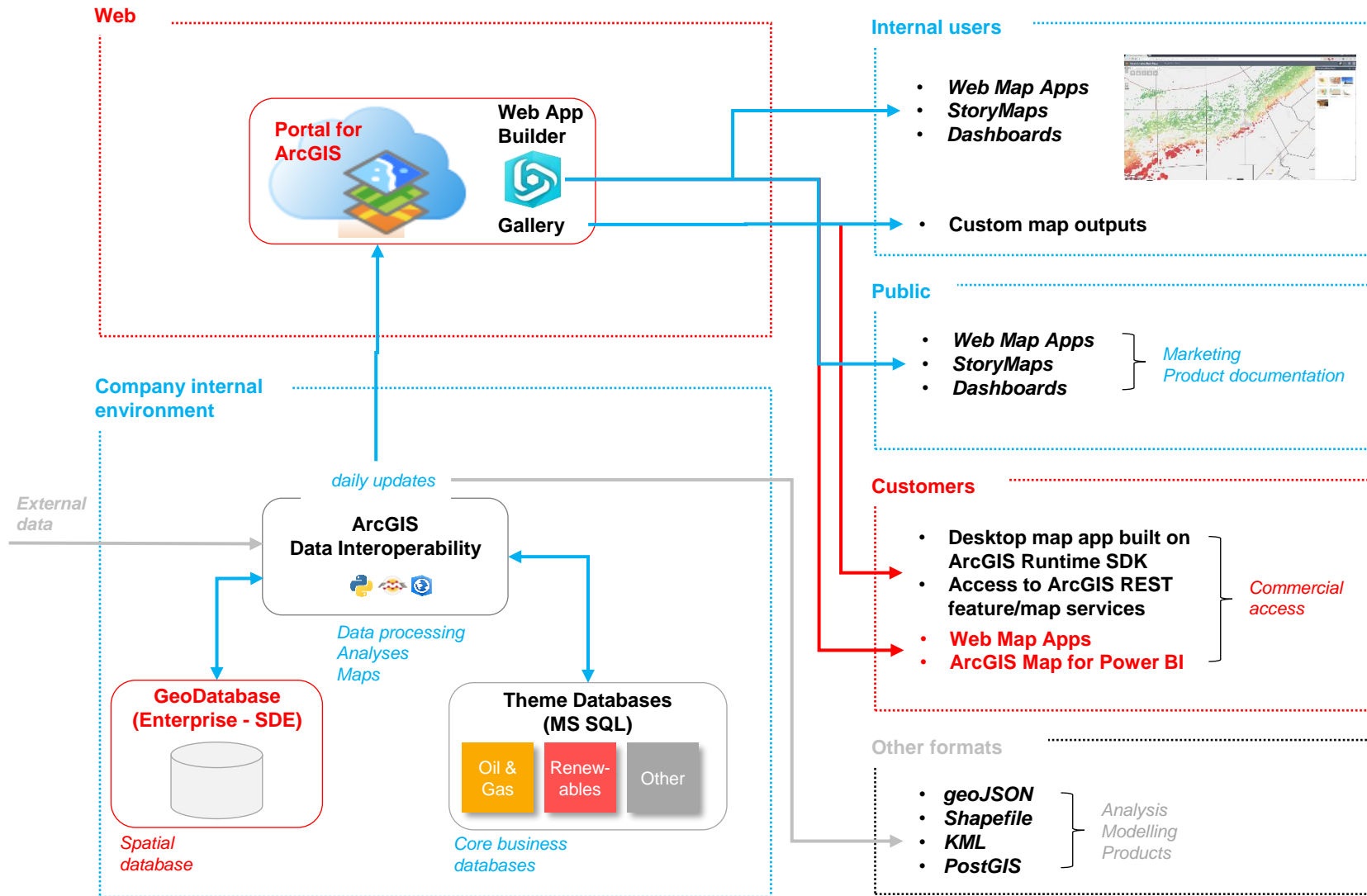


# Company GIS System Architecture





# Plans – transition to ArcGIS Enterprise





## RYSTAD ENERGY

**Rystad Energy is an independent energy consulting services and business intelligence data firm offering global databases, strategy advisory and research products for energy companies and suppliers, investors, investment banks, organizations, and governments. Rystad Energy's headquarters are located in Oslo, Norway.**

### Headquarters

Rystad Energy  
Fjordalléen 16, 0250 Oslo, Norway

Americas +1 (281)-231-2600

EMEA +47 908 87 700

Asia Pacific +65 690 93 715

Email: [support@rystadenergy.com](mailto:support@rystadenergy.com)

© Copyright. All rights reserved.

