

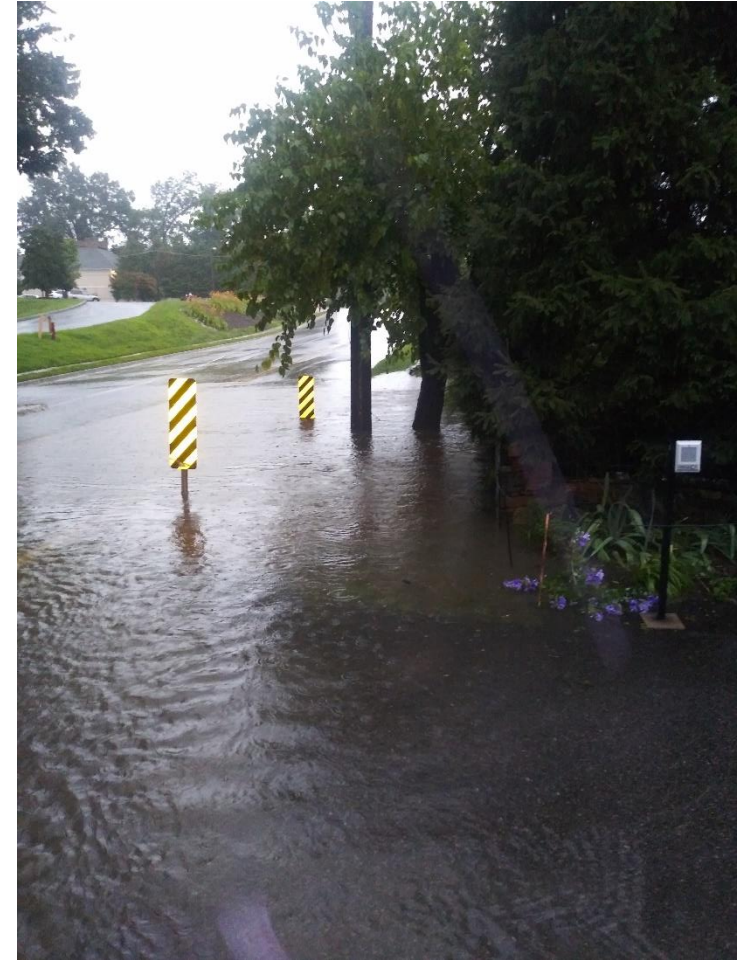
Public Web Based Drainage Basin Delineation using LiDAR

Department of Land Development Services



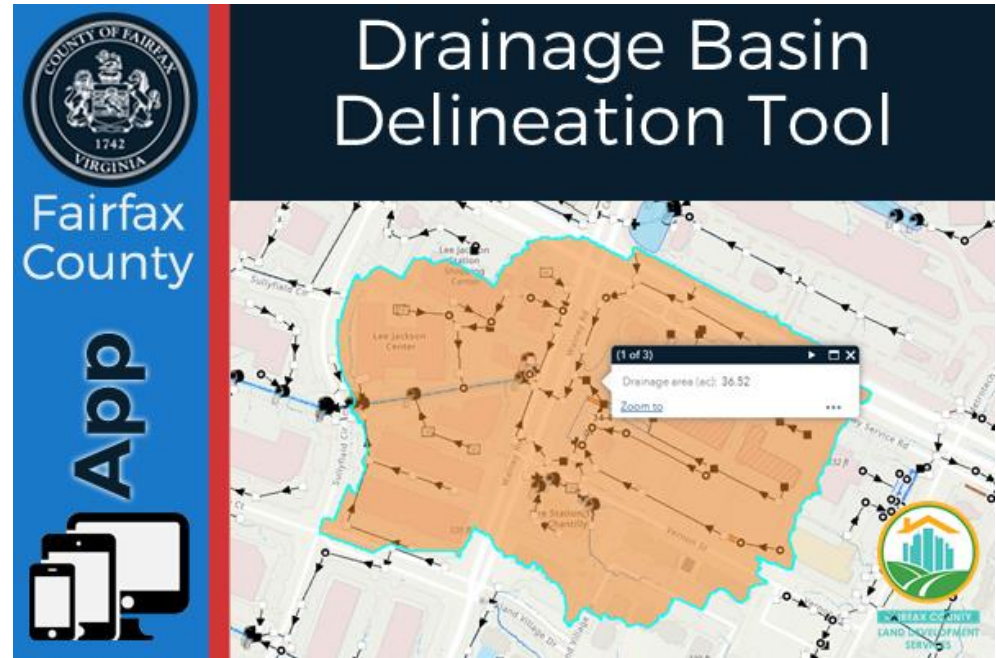
A Fairfax County, VA, publication

What is it? How is it used?



Overview

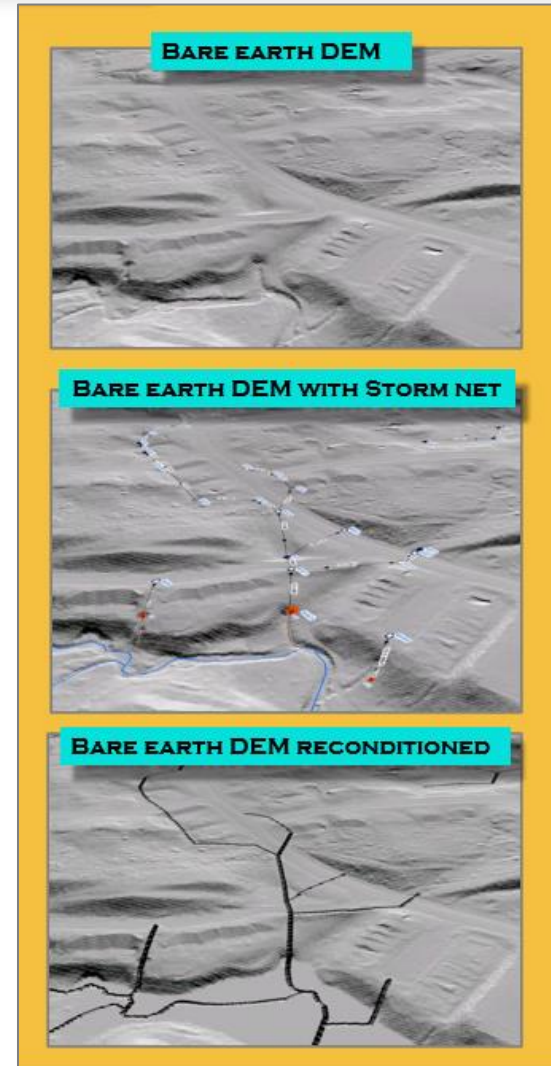
- Hydro Conditioning Process
- Flow Accumulation and Direction
- Geoprocessing Service
- Demo



Hydro Conditioning Process

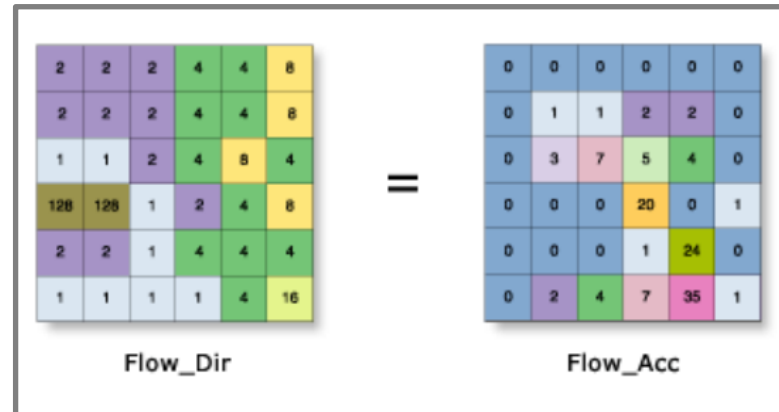
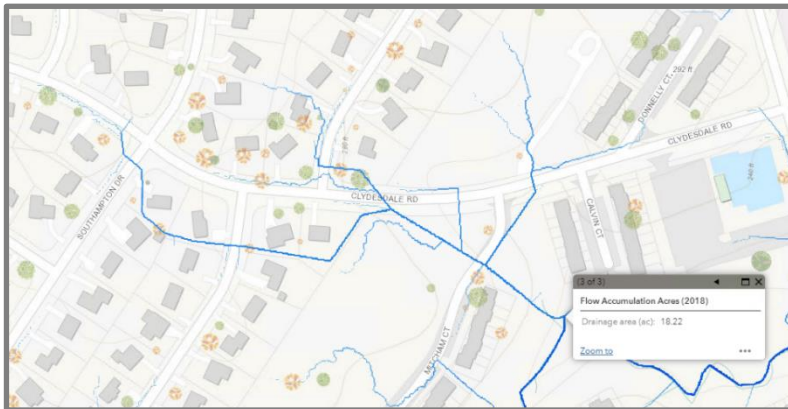
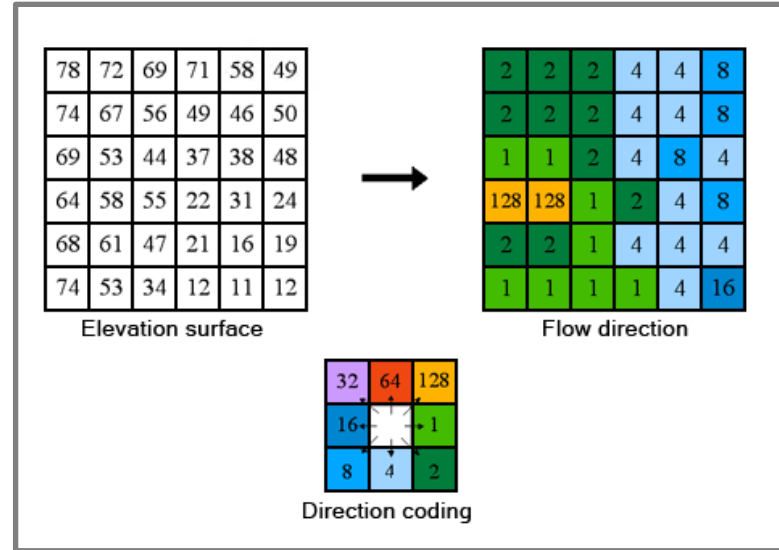
- 2018 LiDAR Derived NGVD29 Bare Earth Digital Elevation Model (DEM)
- Arc Hydro Use Case 8:

1. Fill Sinks
2. DEM Reconditioning (Burning Storm Net and FHD)
3. Fill Sinks (to get rid of the sinks potentially introduced by the DEM Reconditioning)
4. Flow Direction
5. Flow Accumulation



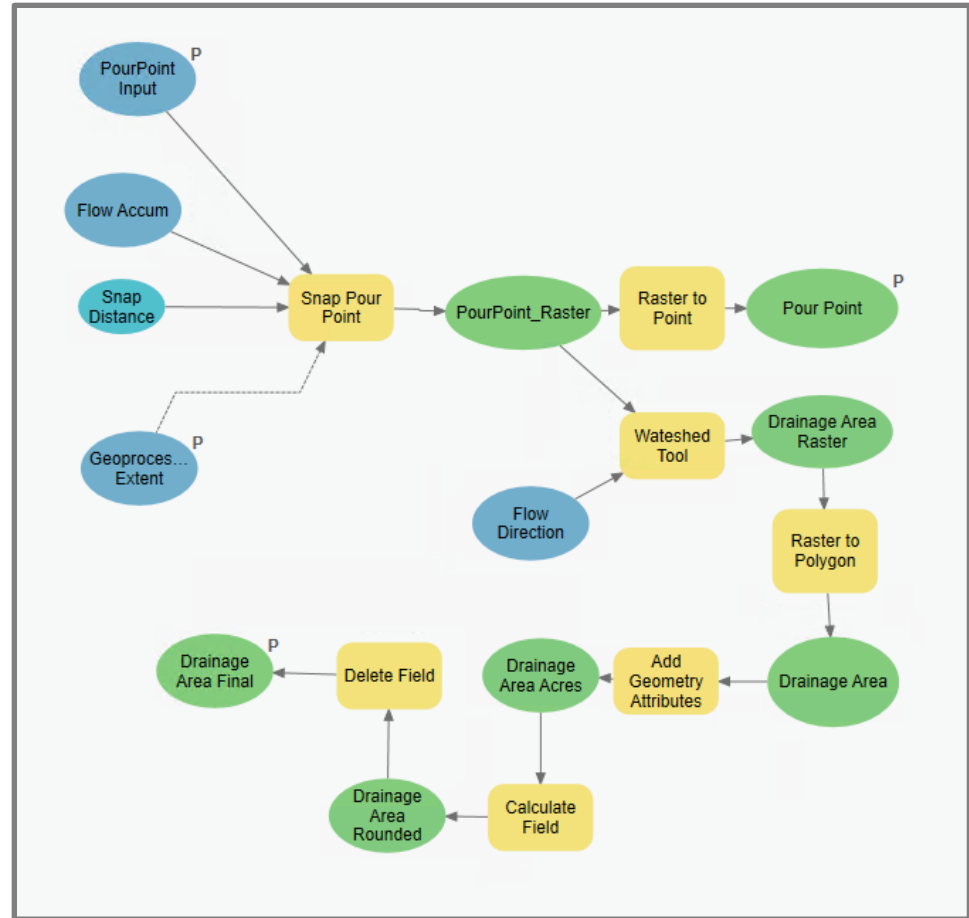
Flow Direction and Accumulation

- Flow Direction
- Flow Accumulation
- Flow Accumulation (Acres)

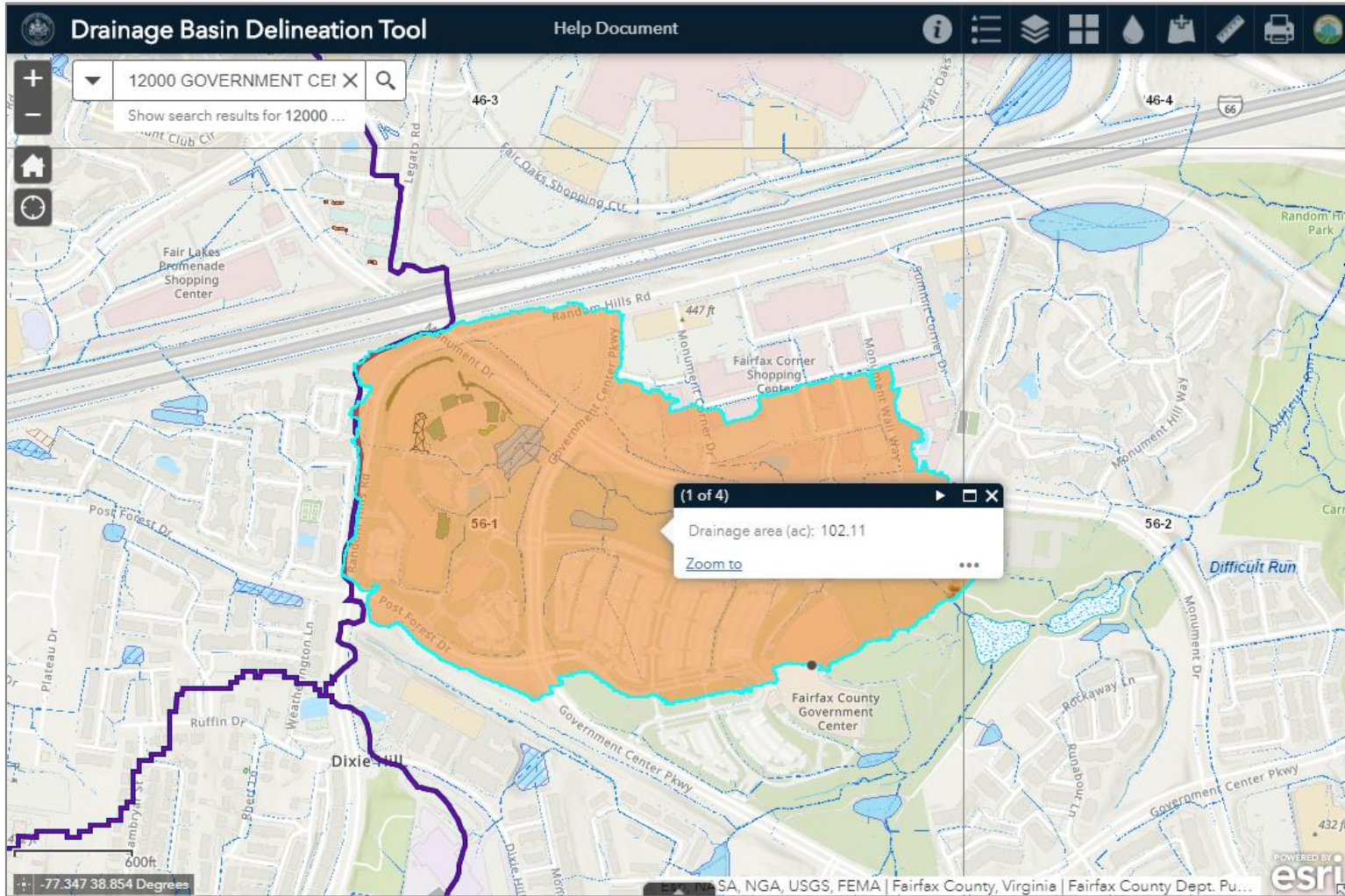


Geoprocessing Service

- Model Builder
- Publishing as a web tool
- Configuring the geoprocessing widget



Demo



Thank you

For additional information, please contact

Brett Martin, GISP

Brett.Martin@fairfaxcounty.gov

www.fairfaxcounty.gov



FAIRFAX COUNTY
LAND DEVELOPMENT
SERVICES

