

# IMPACT OF COVID-19 ON REAL ESTATE PRICES IN RAS AL KHAIMAH

## GIS ASSESSMENT

Eng. Aaesha Shehhi

GIS Center  
Ras Al Khaimah Municipality



بلدية رأس الخيمة  
Ras Al Khaimah Municipality  
مركز نظم المعلومات الجغرافية



## ABOUT THE SPEAKER

Eng. Aesha Saif Shehhi is the Director – GIS Center, Ras Al Khaimah Municipality. She is currently leading GIS Center for their ambitious implementation of GIS Road Map and Enterprise GIS in the Emirate of RAK. She is experienced in Urban Planning, Cadastral system, GIS Infrastructure, Building and Engineering along with Survey services. Aesha holds a Masters Degree in Engineering Project Management from American University of RAK, UAE and a Bachelor of GIS from UAEU. She also has a Diploma in Government Performance Management from Melbourne University and various other certificates in Data, Transformational Leadership, Artificial Intelligence and Smart Governance. Aesha is honored to join the prestigious UAE Government Leaders Program (Future Leaders category).

# ABOUT US

## GIS Center, Ras Al Khaimah Municipality

RAK Municipality was established in the year 1959 in the Emirate of Ras Al Khaimah, United Arab Emirates. GIS Center was established in the year 2016 with the following Strategic Objectives :

Strategic Objectives			
Trusted Spatial Information (TSI)	Discoverability, Accessibility and Usability (DAU)	Activated Spatial Community (ASC)	Strategic Location Intelligence (SLI)
1. The GIS Centre is the trusted source of authoritative spatial information for RAK	1. Spatial information is easily found (discoverability)	1. Spatial information and systems are well governed, providing 'fit for purpose' information and solutions	1. Location information informs decision making in RAK Government
2. Spatial information is curated, published, and managed as a shared asset across RAK Government	2. Spatial information is easily shared across agencies (accessibility)	2. Spatial information gaps are addressed and coordinated across RAK government to reduce duplication of effort and costs. Agencies collaborate on whole of government spatial information needs	2. Customers experience and their quality of life are improved by spatial enablement and services which are 'location aware'
3. Data sharing and service level agreements are implemented (including with third party data providers as appropriate)	3. Spatial data is made available in a format and via channels that are easily used by Agencies (accessibility and usability)	3. RAK government agencies hold an appropriate level of spatial maturity	3. Government business systems are innovated through spatially enablement

# OUR FOUNDATION

## Activating the Mission / Vision

### VISION & MISSION

*Unleashing the Power of location – Spatially Enabled RAK*

#### DATA

- The GIS Centre is the trusted source of authoritative spatial information
- Spatial information is easily accessible across agencies
- Location information informs decision making

#### SYSTEMS

- Government business systems are spatially enabled
- Customers experience the benefits of spatial enablement and services are 'location aware'

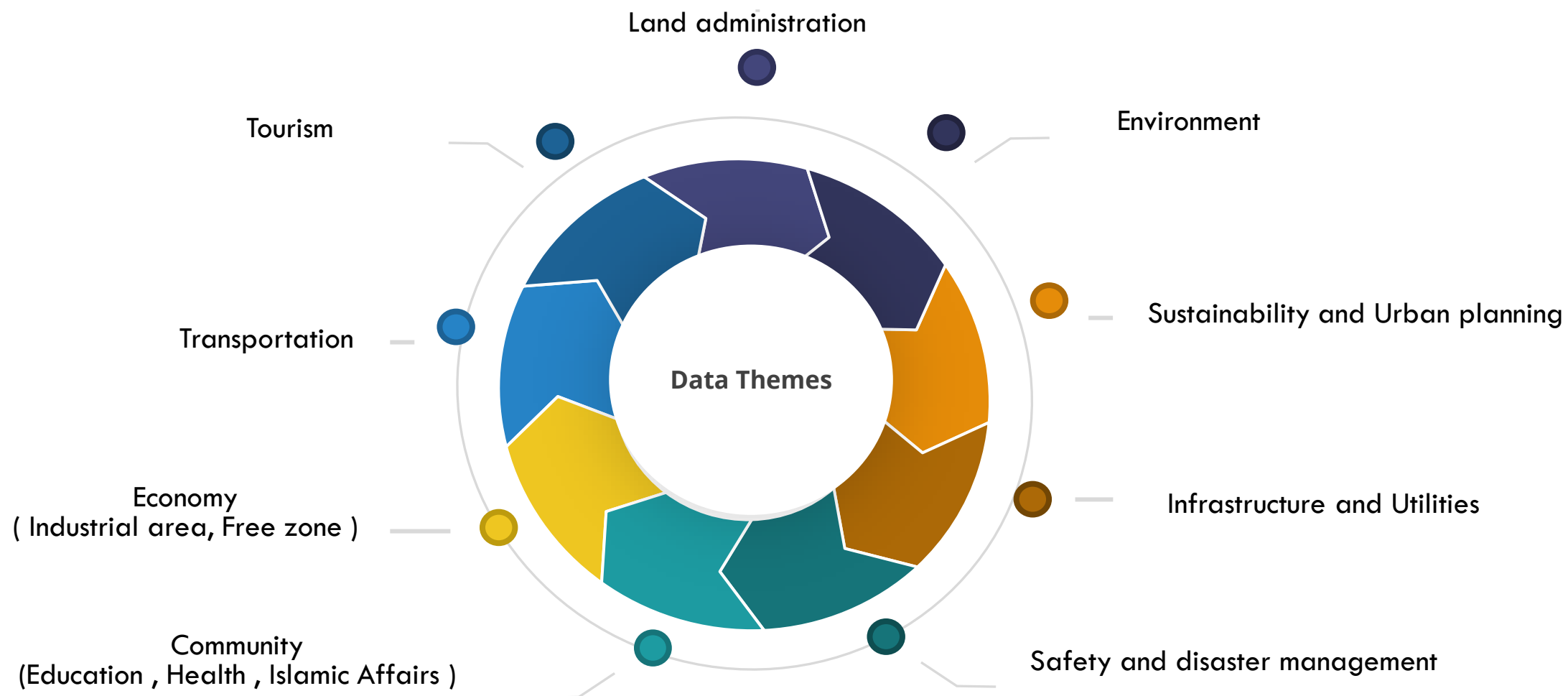
#### GOVERNANCE

- Information and systems are well governed, providing 'fit for purpose' information and systems
- RAK government works collaboratively and cohesively for citizen services and benefit



# OUR DATA

## Themes



# IMPACT OF COVID-19 ON REAL ESTATE PRICES

## Scope

- GIS Center, RAK Municipality, in association with Lands Department and Real Estate Department aim to study the consequences of Covid-19 and its related impact on the real estate industry of the Emirate of Ras Al Khaimah
- GIS Center, RAK Municipality offers GIS Expertise, Support and Capabilities for the impact study

# IMPACT OF COVID-19 ON REAL ESTATE PRICES

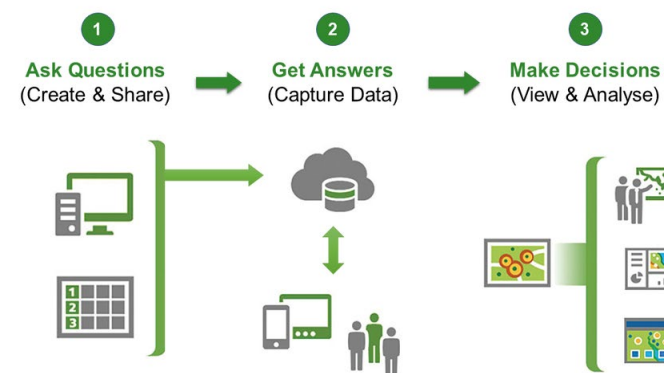
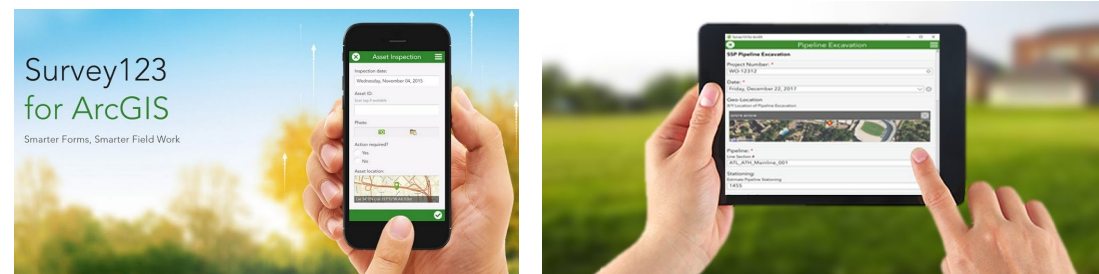
## GIS Technologies

- GIS Center, RAK Municipality has empowered the internal agencies of RAK Municipality to conduct the impact assessment by offering GIS Technologies and Capabilities
  - ✓ Data Collection
  - ✓ GIS Data Validation
  - ✓ GIS – SAP Integration
  - ✓ High-quality change detection maps

# IMPACT OF COVID-19 ON REAL ESTATE PRICES

## Data Collection

- Field Data Collection was carried by using Survey123 for ArcGIS
- The data collected was validated and analyzed in ArcMap

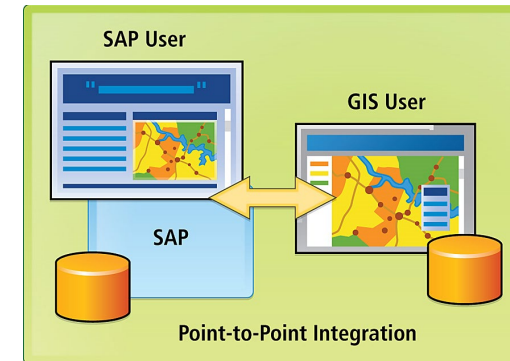




# IMPACT OF COVID-19 ON REAL ESTATE PRICES

## GIS – SAP Integration

- GIS Center has Ras Al Khaimah's first and only ESRI Enterprise GIS
- GIS – SAP Integration helps in dynamic updation of lease transaction and enables display of transaction information on a Parcel level



# IMPACT OF COVID-19 ON REAL ESTATE PRICES

## Change Detection Maps for Analysis

- High quality change detection maps empower decision-makers to visualize localized impact, potential trends and hotspots and statistical information.
- GIS Center uses
  - ❑ ArcPro 2.4
  - ❑ ArcMap 10.6.1



# IMPACT OF COVID-19 ON REAL ESTATE PRICES

## Data for Analysis Parameters

- Collection of Real Estate data for the years 2019 (pre-Covid19) and 2020 (after the onset of the Covid-19 pandemic)
- Analysis is carried out for the two years of data to understand the impact of Covid-19
  - ✓ Field data collected using Survey123 is used to assess the impact on leasing price
  - ✓ Transaction information from SAP is used to assess impact on volume of transactions and occupancy rates

# IMPACT OF COVID-19 ON REAL ESTATE PRICES

## Data Analysis

- Analysis of data of two years (2019 and 2020) to understand the impact of Covid-19 on Real Estate prices
- Using GIS as a Analysis tool for change detection, impact mapping, data validation and data visualization
- The results will be a key resource in the government's response to Covid-19

# RESIDENTIAL LEASING PRICE 2019 VS. 2020

## Impact Assessment

- The 2020 map shows impact on leasing price
  - The green color depicts the renewed residential parcels for which the rents have increased
  - The yellow color depicts the new residential tenancy contract transactions in 2020

2019



2020



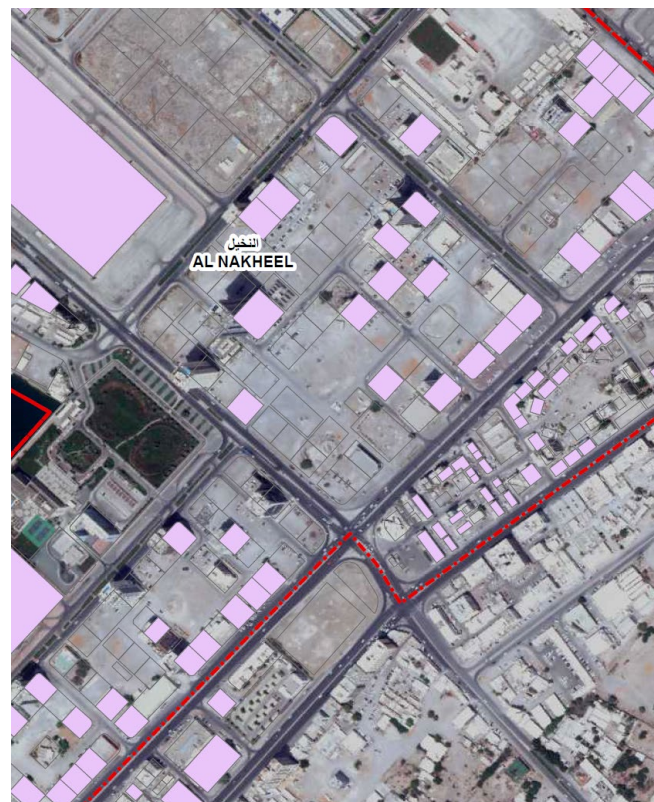


# COMMERCIAL LEASING PRICE 2019 VS. 2020

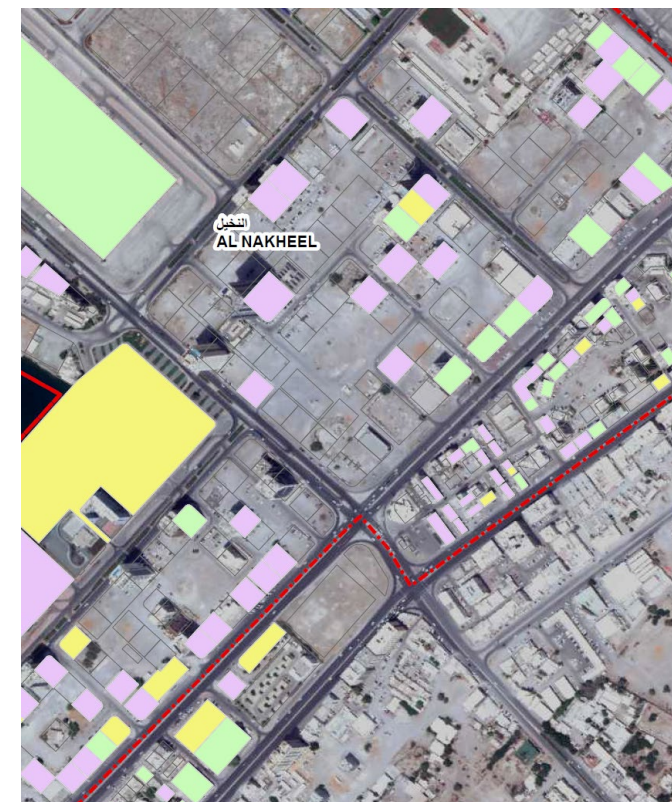
## Impact Assessment

- The 2020 map shows impact on leasing price
  - The green color depicts the renewed commercial parcels for which the rents have increased
  - The yellow color depicts the new commercial tenancy contract transactions in 2020

2019



2020





# RESIDENTIAL LEASE TRANSACTIONS 2019 VS. 2020

## Impact Assessment

- The 2020 map shows impact on lease transactions
  - The yellow color depicts the residential parcels that have a real estate transaction in the years 2019 and 2020

2019



2020



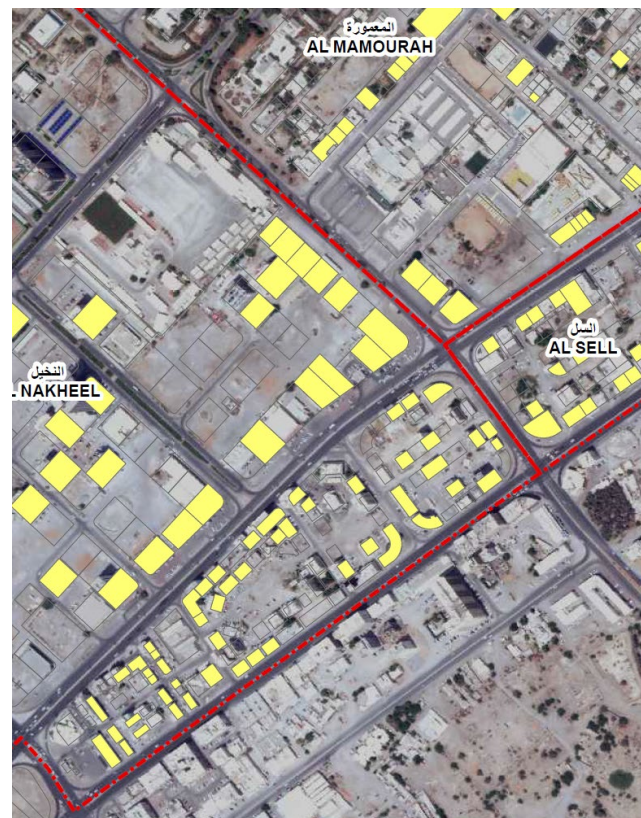


# COMMERCIAL LEASE TRANSACTIONS 2019 VS. 2020

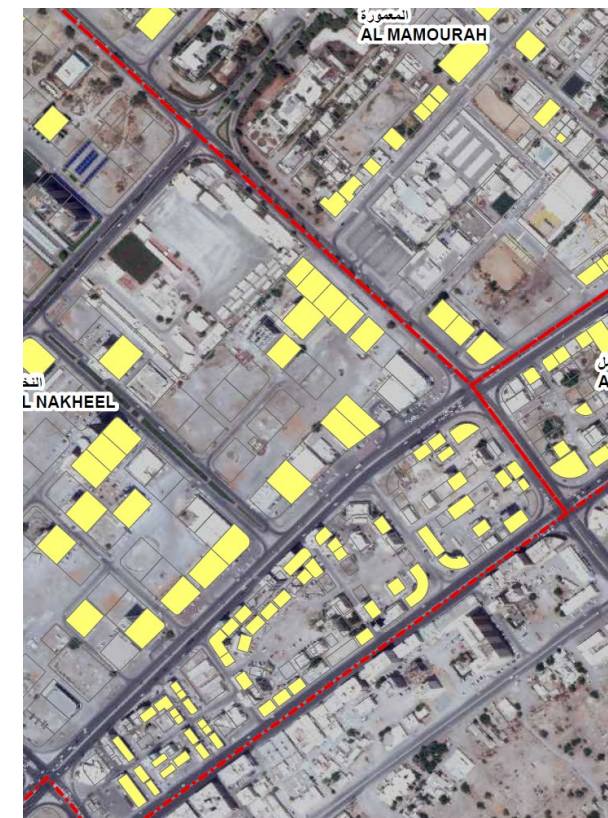
## Impact Assessment

- The 2020 map shows impact on lease transactions
  - The yellow color depicts the commercial parcels that have a real estate transaction in the years 2019 and 2020

2019



2020



- The map visualizes the commercial occupancy for a sector in RAK
  - Darker color shows areas that have seen higher volume of lease transactions







بلدية رأس الخيمة  
Ras Al Khaimah Municipality  
مركز نظم المعلومات الجغرافية

# RESIDENTIAL OCCUPANCY

Year 2020

- The map visualizes the residential occupancy for a sector in RAK
  - Darker color shows areas that have seen higher volume of lease transactions





# CONCLUSION

- GIS Technologies serve as a valuable tool in impact assessment
- GIS Center's well established GIS Capabilities enables enhanced analysis by providing the foundation of data collection, analysis and visualization
- Geospatial outputs are a key resource in the local government's response to Covid-19

# THANK YOU

Eng. Aaesha Shehhi

GIS Center

Ras Al Khaimah Municipality

Email: [aaesha.shehhi@mun.rak.ae](mailto:aaesha.shehhi@mun.rak.ae)

*This report is published for general information only and not to be relied upon in any way. Although high standards have been used in the preparation of the information, analysis, views and projections presented in this report, no responsibility or liability whatsoever can be accepted by GIS Center, Ras Al Khaimah Municipality for any loss or damage resultant from any use of, reliance on or reference to the contents of this document. As a general report, this material does not necessarily represent the view of Ras Al Khaimah Municipality in relation to particular properties or projects.*