

**2021 ESRI USER  
CONFERENCE**

# EXPO SWAG BAG



# WELCOME!

Welcome to the 2021 Esri User Conference! This year we are expecting another record year of attendees joining us virtually for the world's largest GIS conference. With four full days of technical workshops, user presentations, two plenaries hosted by Jack Dangermond and other amazing keynotes this year will provide endless information for all users. Be sure to set time to also explore our fully interactive Expo full of members of our Esri Partner Network, as this year's User Conference is sure to be full of learning, connections and fun.

This digital swag bag includes information on some of our participating partners at this year's Expo. We strongly encourage you to visit this year's Expo page and explore all our participating partners. With over 180 sponsors and exhibitors this year, you are sure to find a service, product or implementation that will help you and your team with your workflow.

Each sponsor and exhibitor are available for chats or meetings to discuss and answer any questions you may have. Most of their virtual listings include videos, marketing material, and links to projects that will keep you informed on their work and opportunities. Some sponsors and exhibitors are also presenting at this year's conference, so be sure to view their Sessions tab on their listing page to see what time their session is scheduled. You will also want to check the Live Demos tab to see if they are hosting live demos or focused discussions during the week. These demos and discussions are interactive and allow for questions and interaction the same way they would if you were on the Expo floor in person.

We hope you view all the partners in this digital bag and visit their listing for more information. Drop your business card on their listing pages to get added to be contacted with for more information and product and service updates.



# INTERACTIVE EXPO GUIDE

**Interact with videos,  
maps and agendas**

## ESRI USER CONFERENCE

### INTERACTIVE SPONSORS AND EXHIBITORS EXPO MAP

Explore sponsors and exhibitors on our interactive maps as well as see the schedule for those who are presenting at this year's UC.

Esri Expo Team



Experience the 2021 User Conference Expo

#### Sponsors, Featured Exhibitors and Distributors

Explore the sponsors, featured exhibitors and Esri distributors who are participating in the 2021 Esri UC Expo. Be sure to look at each description as many participants have presentations and demos during the conference and their session date and times have been added.



**GOLD SPONSOR**

**Eos Positioning Systems**

Eos Positioning Systems is the award-winning Esri partner and North American manufacturer of the Arrow Series® GNSS (GPS) receivers. Arrow GNSS receivers Bluetooth into any iOS, Android



**Explore where sponsors and exhibitors are located around the world**

**View partner  
presentation schedules**

#### Live Sessions

Join participating partners during their live presentations. These 30-minute sessions will share best practices and implementation of Esri software while highlighting their services. These live sessions allow for Q&A as well so be sure to get your questions in to the presenters using the Slido app during the session.

[View Agenda](#)

##### Enabling Better Workflows with BIM & GIS (Autodesk)

Tuesday, July 13 10:30 a.m. - 11:00 a.m.

Join this live demo to see real-life use cases of how Autodesk's and Esri's integration of BIM & GIS enables better workflows, more transparency and better outcomes.

##### Amazon End User Computing (AWS)

Tuesday, July 13 10:30 a.m. - 11:00 a.m.

Learn about the options that AWS has available for end user computing, including Amazon WorkSpaces and Appstream 2.0

##### GIS-Centric Digital Transformation in Public Asset Management (Cityworks)

**Explore the guide here!**

CASE STUDY 02:  
NEW BRAUNFELS, TX

# NEW BRAUNFELS SAVES **WEEKS** ON ANNUAL PAVEMENT PLANNING

As one of the top 10 fastest growing cities in the U.S., New Braunfels, TX isn't about to run out of road any time soon. But, when it comes to pavement management for its 74,000 citizens, this city just northeast of San Antonio finds itself in a constant chase to keep pace with booming growth.

With an ever-increasing infrastructure and minimal increases in personnel, city engineers tapped into Cartegraph's two-way ArcGIS integration to ensure crews were performing the right work on the right segment at the right time. Additionally, they're leveraging the best-in-breed solutions for location-based analysis and building interactive maps that keep council members and citizens in the know.

New Braunfels holds an annual public survey meeting to help build their annual pavement plan. In prior years, citizens would indicate what they'd like fixed on paper forms, and it took several days for a team of engineers to interpret and compile the information—20 percent of which couldn't be mapped because the handwritten entries were unclear.

Today, the city maps citizen requests in real-time during the meeting thanks to the power of **Cartegraph and ArcGIS**. The city also created an easily accessible online submission form so residents can submit requests year-round. These on-demand capabilities have helped New Braunfels work with the public more closely and gain their confidence. In the end, they're able to take a mountain of data and turn it into something more tangible: something they can work with, report on, and share.



**LEARN MORE**

WEBSITE:	<a href="https://cartegraph.com">cartegraph.com</a>
CALL US:	<a href="tel:800.688.2656">800.688.2656</a>
EMAIL:	<a href="mailto:sales@cartegraph.com">sales@cartegraph.com</a>

CASE STUDY 01:  
BAY COUNTY, FL

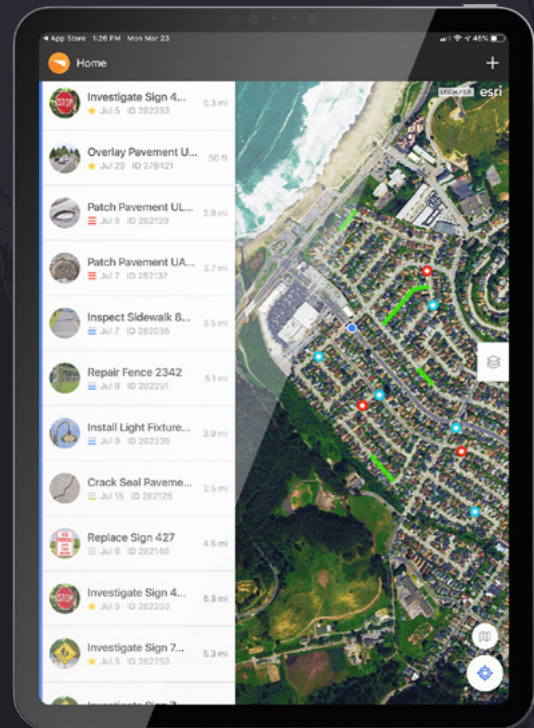
## BAY COUNTY'S HIGH-PERFORMANCE APPROACH TO FEMA REIMBURSEMENT

Being on the coast of the Sunshine State, Bay County is prone to flooding brought about by hurricanes, tropical storms, and surging rainfall. But, for many years, the team didn't have clear insight into how they were spending their time or what condition their assets were in.

The problem became especially apparent when assessing the damage and repair costs on county assets after natural disasters. It would take weeks—even months—to compile damage assessment information into reports to send to FEMA, and the team often felt they were leaving money on the table.

Leveraging ArcGIS maps within Cartegraph's operations management system, Bay County set out to manage all of its infrastructure assets in one centralized, real-time database. Public works staff assigned an overall condition index (OCI) for each asset. Those OCI data points helped the team generate automatic work orders, so they could do repairs more proactively and eliminate stacks of slow-moving paperwork.

Today, the Bay County team has collected data on thousands of assets; so they can track conditions, work history, and maintenance costs—down to the penny. When disaster strikes, they compile FEMA reports with ease—recouping millions of taxpayer dollars.



*The U.S. has experienced 61 natural disasters that have each caused at least \$1B worth of damage over the past 5 years.*

NOAA [2019]

AVAILABLE AT [CITYWORKS.COM/ESRIUC](http://CITYWORKS.COM/ESRIUC)

**Cityworks**  
A TRIMBLE COMPANY

# ESRI UC LIMITED EDITION



## THE CITYWORKS LIMITED EDITION SOCK

**FREE**

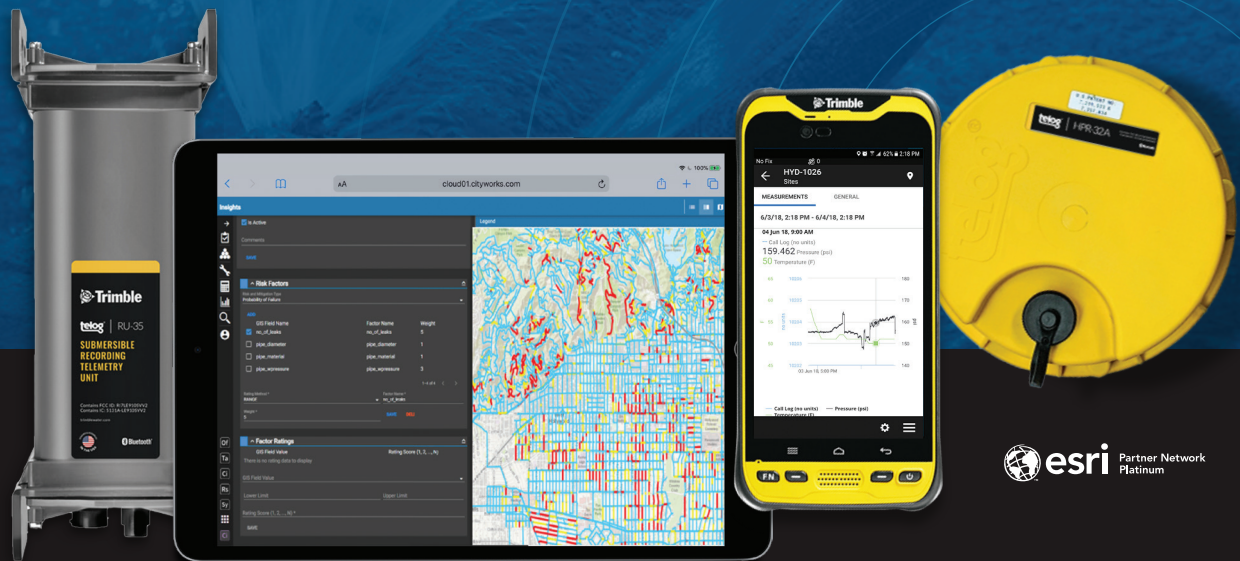
WHILE SUPPLIES LAST GRAB YOUR PAIR OF CITYWORKS LIMITED EDITION SOCKS MADE EXCLUSIVELY FOR ESRI UC PUBLIC SECTOR GIS GURUS. GO TO [CITYWORKS.COM/ESRIUC](http://CITYWORKS.COM/ESRIUC) TO REDEEM YOUR LIMITED EDITION.

\*SUPPLIES ARE LIMITED WHILE THEY LAST.

\*RENDERING MAY VARY FROM ACTUAL PRODUCT.



# EMPOWERING UTILITIES AND LOCAL GOVERNMENT WITH GIS INTELLIGENCE

 **esri** Partner Network  
Platinum

Cityworks empowers your operations with better data, better insights, and better decisions.

Local government and utility organizations have no shortage of data. But turning that data into actionable insights can sometimes feel ... impossible. Cityworks is the only GIS-centric public asset management and permitting solution that leverages your investment in ArcGIS to make sense of the complexity of data and create scalable systems of action. From IoT remote monitoring to intelligent asset management, now you can easily track and visualize every asset and its associated history, labor, costs, materials, permitting workflows, and so much more.



security.manager

# Stop Struggling – Start Sharing

Making Sharing Data Smarter, Easier and More Secure

By adding **advanced data protection capabilities** to ArcGIS Enterprise, con terra's security.manager makes **sharing data** smarter, easier, and more secure.

security.manager gives you the ability to **filter content** based on spatial areas, individual layers, features or even attributes, all within a single ArcGIS Enterprise service, helping you achieve two main goals:

- Ensure specific content of a service is only available to those who require it, ensuring **sensitive data is protected** while making it available to those who need it most.
- **Reduce efforts and resources** expended on serving different content to various user groups by removing the need to slice up data and publish multiple, redundant services.

*"Without security.manager, we would still keep our geodata in the closet and inaccessible. security.manager opens up complete new possibilities to offer GIS-based web services controlling access precisely for users with different permissions."*

Eugen Gass - Wintershall Holding GmbH, Germany

*"security.manager has made it possible to create one web map and one web app for each department and control how each operates. Without security.manager, we could only achieve fine level control by creating a large number of apps, map services or web maps."*

Keith Gerharz - City of Winter Park, Florida



# Everything is possible!

90 seconds of inspiration for you



**con•terra**  
locate the future



## WHY ROK TECHNOLOGIES?

### Managed Services Suite of Solutions



#### ASSESS

*It all starts with knowing what you need*

Connect with ROK and let our team of experts review your current needs and future goals to come up with the GIS plan that best suits your operation.



#### MANAGE

*Keep the lights on*

Who manages your Cloud matters. Bring the ROK Team of Experts to your organization and free up your time to focus on innovating and not surviving.



#### ACTIVATE

*Let's get you up and running*

Want to migrate to the Cloud, or Install, Configure, and Integrate your Esri Enterprise Solutions? We've done it before. We will help you get up and running.



#### SECURITY

*Keeping data secure is a top priority*

Want to migrate to the Cloud, or Install, Configure, and Integrate your Esri Enterprise Solutions? We've done it before. We will help you get up and running.

## WHO WE SERVE?

- We have expertise in all of Esri's key verticals, servicing over 120 clients, from Fortune 100 companies to small municipalities in:

Architecture, Engineering & Construction



Commercial



Oil & Gas



Telecommunications



Public Safety



Transportation



Utilities



State and Local Government



GOLD SPONSOR

ROK TECHNOLOGIES





# GIS Managed Cloud Services

At ROK, we take your GIS to the cloud

With scalable, highly durable, and cost-effective cloud first technologies, ROK can take the IT and ArcGIS Enterprise management off your plate, so you can focus on what you do best, GIS.

## WHAT WE DO

- ▶ Managed Cloud Services
- ▶ ArcGIS Enterprise Deployments
- ▶ Software Virtualization
- ▶ Infrastructure Provider
- ▶ Custom Security Options



ArcGIS Marketplace  
Provider



ArcGIS Online  
Specialty



Federal Small Business  
Specialty



Release Ready  
Specialty



ArcGIS Cloud Services  
Specialty



**esri**

Partner Network  
Gold



Partner Network  
ADVANCED TECHNOLOGY PARTNER

# THANK YOU TO OUR SPONSORS

## GOLD SPONSORS



AUTODESK®

Cityworks®  
A TRIMBLE COMPANY



Life Is On

Schneider  
Electric



## SILVER SPONSORS

Cartegraph

con•terra



## BRONZE SPONSORS



MAXAR



RAMTECH



# IGNITE YOUR CAREER WITH GEODESIGN

*Challenges before us exceed the reach of conventional approaches -- Geodesign is GIS in action for proactive planning!*

# MPS

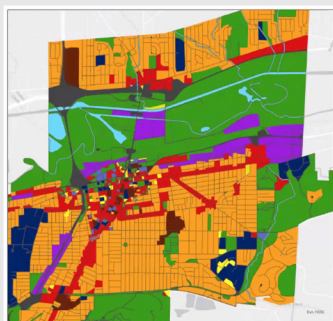
MASTER OF PROFESSIONAL STUDIES IN GEODESIGN

# CERT

GRADUATE CERTIFICATE IN GEODESIGN

# MOOC

GEODESIGN: CHANGE YOUR WORLD

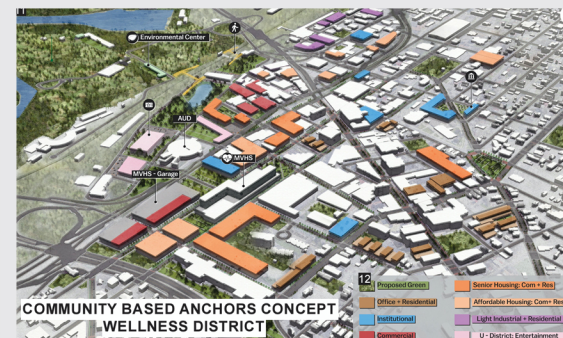
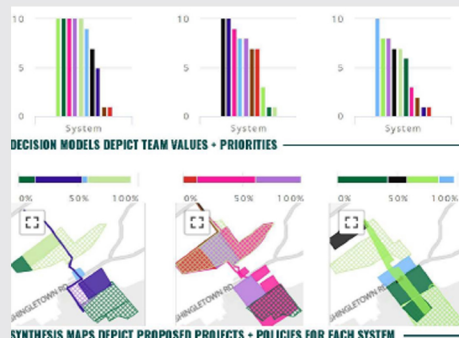


**3,181 Jobs**  
Retail, office space in DT & in MU Communities

**18 Miles**  
Dedicated Bus Lanes – and roads with multimodal options

**7.15 Miles**  
Roads with designated bike lanes – improved sidewalks

**11,859 lbs.**  
11,859 lbs. Carbon  
272 new acres  
1.1m new trees (max)



## STUDY FROM ANYWHERE!

ONLINE COURSES & GRADUATE PROGRAMS

We have students from Hong Kong, Australia, Mexico, and throughout the United States.



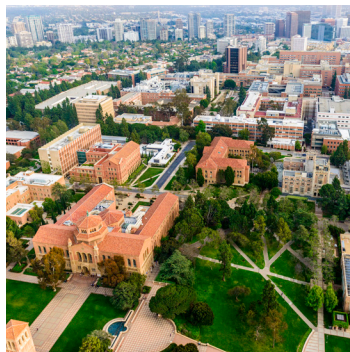
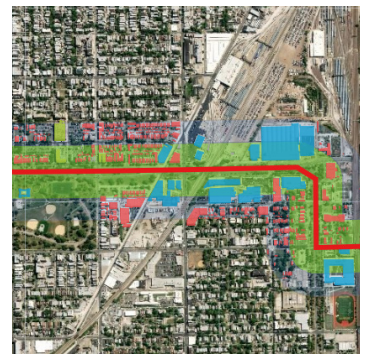
**PennState**



[GEODESIGN.PSU.EDU](http://GEODESIGN.PSU.EDU)

*"Geodesign fundamentally challenges people to think differently and yields dramatic results."*





**PATRICK**

smart people.  
bright ideas.  
**powerful results.**

800.799.7050 | [www.patrickgeospatial.com](http://www.patrickgeospatial.com) | [www.patrickco.com](http://www.patrickco.com)





**LandVision™**

## Applications

Powerfully visualize and analyze data with our turnkey map-based real estate applications and configure your business processes based on your needs.



**SpatialStream®**

## Web Services

Stream the latest content into our applications or your applications and portals in real-time with our robust web services & APIs.



**SmartParcels®**

## Map-Ready Content

Leverage nationwide parcel boundaries combined with 300+ property and tax attributes, as well as other comprehensive datasets.



**Digital Solutions**

## Digital Solutions

While our platform is available out of the box, our Digital Solutions team works with companies like yours to bring their visions to life so that they can focus on driving results.

## Offering 8,680 Compelling Insights Every Second

Our cloud-based offering is the only end-to-end, highly flexible, and content-rich location intelligence platform. It's ready to go when you are.

### You Don't Think You Know Us, But You Do

We deliver compelling, location-related insights for over half of the U.S. population. We are trusted by:

- The two most popular navigation apps in the US
- Four of the top six online real estate portals
- Four of the largest utility companies
- The State of California & 15 of their agencies

We process 4 billion server hits per month in support of users in over 15 major industries. These include commercial real estate, land development, builders, utilities, oil & gas, online real estate, insurance, technology, government, finance, and energy.

More reasons why companies love our platform >



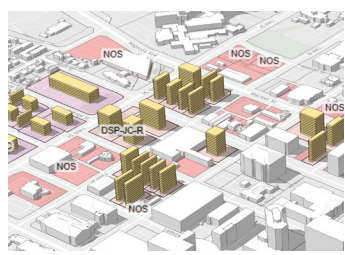


**esri** Special Achievement in GIS  
2020 Award Winner

**APA Tech** Smart Cities  
2020 Award Winner

**HL**  
**HOUSEAL  
LAVIGNE**

## PLANNING BEYOND THE PRETTY PICTURE



### ARCGIS URBAN & 3D BASEMAPS

As an Esri Business Partner with award-winning expertise in municipal planning and zoning, 3D modeling, and GIS, there is no one better to help you configure and launch a 3D basemap and ArcGIS Urban.



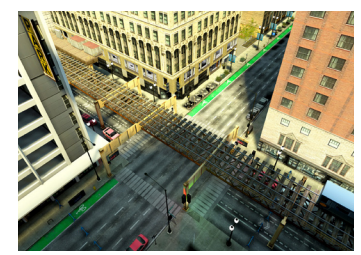
### ARCGIS HUB DEPLOYMENT

As innovators in community engagement and creators of map.social, we understand the importance of effective outreach and have mastered the deployment and utilization ArcGIS HUB.



### URBAN PLANNING & DESIGN

From long-range planning for an entire region to detailed infill development scenarios for a vibrant downtown, our team's expertise is focused on enhancing the relationship between people and their environment.



### IMMERSIVE & INNOVATIVE GIS

We are using VR, Unreal Engine, and other platforms to develop more realistic and immersive environments that literally can place you inside an interactive 3D experience.



### CITYENGINE RULES & TRAINING

As the leader in CityEngine we routinely write and develop CGA rules to visualize urban planning scenarios and recommendations, and have prepared tutorials and exercises and can be conducted with one-on-one or group training.



### 3D CONTENT

From interactive 3D models of entire cities to architectural level detailed 3D visualization of smaller sites, our team of recognized experts can effectively and creatively deliver your project in 3D.



### OUTREACH & ENGAGEMENT

To ensure evidence-based decision-making, we can help you create spatial data sets, prepare maps, and maintain databases that fully leverage geospatial analysis for a variety of applications.





Scan for more details

iSpatialTec provides innovative smart solutions using  
**Esri GIS & Artificial Intelligence Solutions**

## SERVICES



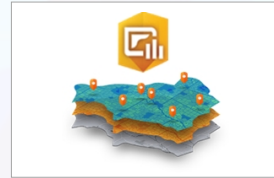
GIS Mobile/  
Web Applications



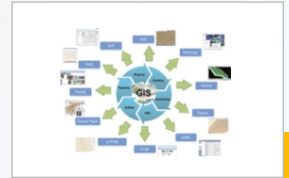
Web App Builder /  
Custom widgets  
Development



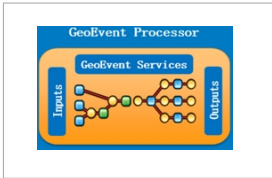
Tools Development  
(2D / 3D)ArcMap /  
ArcPro



Build Reports  
ArcGIS Analytics /  
Operations Dashboard



GIS System  
Integrations



Real-time Data  
Analytics (IOT)



Portal Customization  
/ Branding



ESRI App Studio  
(Mobile / Web Apps)



Esri Utility  
Network Model  
(Migration / Configuration)



Datamodel Design /  
Spatial Data Extraction /  
Automation / Migrations

## PRODUCTS



## TRACK RECORD



## INDUSTRIES



Oil and Gas



Local Government



Utilities



Transportation



Agriculture



Property Management





Welcome to the Esri User Conference

## TAKING GIS TO THE FIELD

# EVERYTHING YOU NEED TO START and TO KEEP YOUR GIS ADVANCING

For over 30 years Frontier Precision has been helping solve complex data collection challenges by seamlessly integrating GIS and field operations.

### NEW FROM FRONTIER

- Turnkey solutions for water utilities
- New Trimble receiver and ArcGIS Online bundles
- Small local government solutions for every initiative
- Tailored Jump Starts for ArcGIS Online, Collector, Field Maps, Survey123, or Story Maps
- Trimble Cityworks and Unity Integration Partner
- New field and office solutions for aquatic and terrestrial weed control

[Click here for details & videos](#)

#### Schedule a Meeting

**Jacob Wittenberg**

Technical Services Advisor

208-324-8006, [jake@frontierprecision.com](mailto:jake@frontierprecision.com)

#### GIS Services

- GIS Strategy and Planning
- System Implementation
- Mapping & Visualization
- Training & On-going Support

#### Industry Focus

- State & Local Government
- Water, Wastewater, Stormwater
- Health & Human Services
- Non-profit

#### FieldSeeker GIS Apps

- Mosquito & Vector Control
- Invasive Plant Control

#### Unique Capabilities

- Mobile Data Collection
- High Accuracy GNSS
- Water Monitoring
- UAS (Drone) Technologies
- 3D Scanning & Mobile Imaging



**esri**

Partner Network  
Gold



State and Local  
Government  
Specialty



ArcGIS Marketplace  
Provider



Esri Partner Conference  
2018 Award Winner  
Taking GIS to the Field



ArcGIS Online  
Specialty



Release Ready  
Specialty



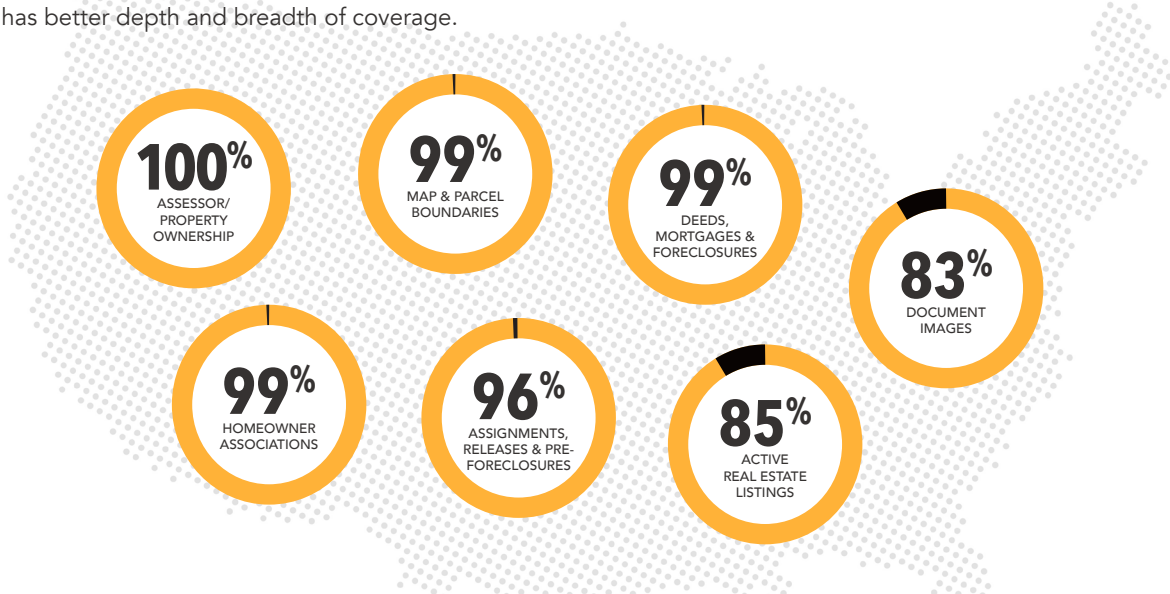
## Superior Data. Outstanding Service. Extraordinary Results

First American Data & Analytics is dedicated to delivering superior data along with award winning service. The kind of big data that geospatial organizations like yours can trust to deliver accurate mapping for spatial analysis, create analytics and data visualizations, power location intelligence and innovate with confidence.

### The Strongest Data Foundation for Geospatial Intelligence Tools

#### Real Estate Data that Spans the Nation

Realize your goal through property information that includes 100% percent of the U.S. housing stock. No other property data provider has better depth and breadth of coverage.



#### The Data You Need

From the critical information contained in public record data to billions of recorded document images and even logic-applied calculations like home equity estimations or loan-to-value, First American delivers the information you need.

#### Standardized and Quality Checked

When it comes to data, nothing is more important than accuracy. We combine data from multiple public and proprietary sources, apply rigorous quality assurance measures and standardize the data format so that you can focus on what is important - your business.

#### Multi-Sourced Data Sets

Ensuring the accuracy and quality of data is our top priority. First American Data & Analytics database leverages our market leading title plant data, along with data from multiple real estate property authorities. These data sets are enhanced further with supplementary sources to bring the breadth, depth and accuracy that no other data provider can offer.

#### Data @ Your Service

First American Data & Analytics is ready to put our data to work for you. We can customize our data sets to fit your needs and deliver that data in a format that ensures you can easily incorporate and productionalize the information – whether it's the entire database or a smaller subset.

📞 866.377.6639

📍 4 First American Way, Santa Ana, CA 92707

🌐 [www.FirstAmDNA.com](http://www.FirstAmDNA.com)

✉ [DNASales@FirstAm.com](mailto:DNASales@FirstAm.com)

DNA: 2021.06.03

First American Data Tree LLC and First American Mortgage Solutions, LLC, (the operating entities that may provide products and services as First American Data & Analytics) make no express or implied warranty regarding the information presented and assume no responsibility for errors or omissions. First American and the eagle logo are registered trademarks of First American Financial Corporation and/or its affiliates.



**First American**  
DATA & ANALYTICS

©2021 First American Financial Corporation and/or its affiliates. All rights reserved. NYSE: FAF



Why do more  
than 2,000 public  
administration customers  
trust CentralSquare  
software?



Every essential function – from  
finance to asset management



One secure login to a single  
workspace available 24/7 from  
any browser and device



Embedded, AI-powered  
analytics that write reports  
for you



Streamlined data across unified  
solutions reduces data entry by  
nearly 70%



Best-in-class scalability for  
growing or scaling back as your  
community evolves



Cloud-based, best-of-breed  
products with robust ability to  
integrate with other community  
systems and data

**A clear choice for meeting the growing expectations of your citizens,  
CentralSquare's best-of-breed, cloud-based software delivers the greatest depth  
and breadth of offerings in the industry.**



# Geomatic



GIS for Agriculture

Agriculture



GIS for Utilities

Utilities



Urbanism Digital  
Transformation



Online Training  
Facility



LocaFleet  
powered by Geomatic

Fleet  
Management



GIS for Asset Management

Asset  
Management

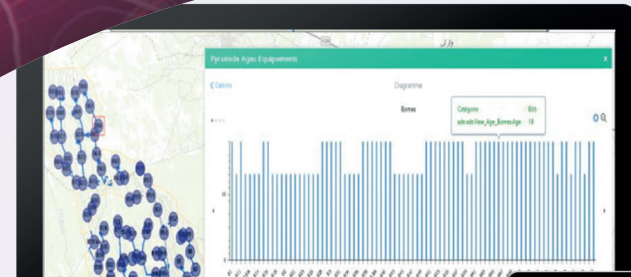


GeoDecision  
Insurance and  
GeoMarketing

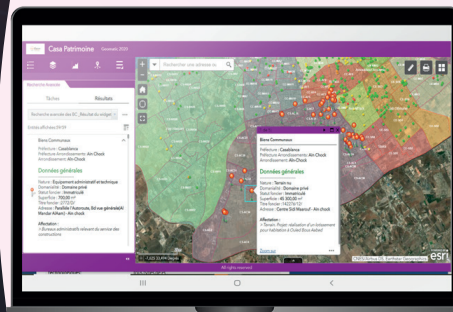
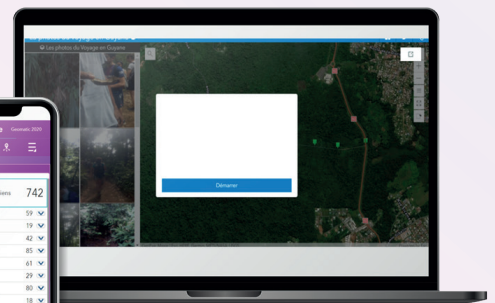
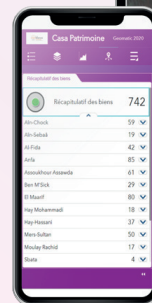
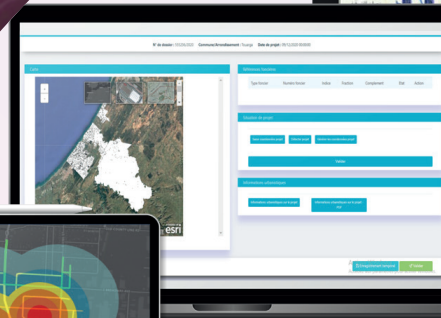


Sila

Smart Mobility



Fiche Monographie	
Commune : Agafay	
SUPERFICIE TOTALE :	21900
REALIMENTE :	3640
SUPERFICIE AGRICOLE UTILE :	13250
CHU :	3160
INDUSTRIE :	4450
PARCOURS :	4200
FORET :	0
BOIS :	4450
PMB :	0





# Sambus Geospatial

*mapping your ideas ...*



Sambus Geospatial is an applications development firm that integrates technologies and provides a range of geospatial solutions to various industries. Our corporate alliance with Esri, Trimble, L3Harris and Wingtra over time, has given us an edge in the implementation of location intelligence solutions, to enhance decision making across different organizations in West Africa. We operate in Ghana, Nigeria, Liberia, Gambia, Gabon, Sierra Leone and Equatorial Guinea.

## OUR SERVICES

Sambus leads the market in West Africa as the geospatial solution providers and our main services include;



### Solutions

We provide powerful tools for GIS professionals to create map-based solutions across different industries.



### Consultancy

We provide quality consultancy services to our clients with our dedicated team of GIS Professionals



### CSR

Standing on 'Service' as part of our Core Values, We support NGO's and Charity Organisations.



### Sales

We focus on selling solution based products to adequately satisfy client needs.



### After Sales Support

Sambus renders professional technical support to all clients for all products and geospatial services



### Training

We have an elite team of Certified GIS instructors who train clients in the use of our products.

**WATCH OUR EXHIBITION**

Join our spotlight session as we highlight some of our recent contributions to the GIS community in West Africa

**UC 2021**  
July 12-15, 2021



**esri** Official Distributor

+233 (0) 302 777 127 | +234 (0) 9 292 2821  
[info@sambusgeospatial.com](mailto:info@sambusgeospatial.com)  
[www.sambusgeospatial.com](http://www.sambusgeospatial.com)





At Locusview, we help utilities manage their capital construction projects from planning to revenue. We provide a streamlined Design > Construction > Close-out workflow through an integrated Digital Construction Management (DCM) platform. Our technology manages the entire construction process to achieve better infrastructure integrity, improve financial predictability and increase productivity. In the past years, we have orchestrated large-scale implementations with some leading utilities across the globe. Together with our clients, we are productising industry best practices allowing all of our users to leverage the successes and lessons learned from our growing network of users.

## BENEFITS

**70%**  
Reduced Backlog

**50%**  
Cost Savings

**20%**  
Time Savings



### DIGITAL TWIN

#### COMPLETE ACCURATE ACCOUNTING OF CONSTRUCTED ASSETS

Establish the basis for creating a digital-twin of assets during construction in real-time using existing field crews.



### IMPROVED PRODUCTIVITY

#### REDUCED CYCLE TIME

Digital Thread unifies construction data reducing cycle time. Design and GIS integrations and automated material reconciliation speed close-out and revenue realization - no more paper drawing or manual data entry.



### VISIBILITY AND CONTROL

#### MANAGE CONSTRUCTION IN REAL-TIME

Operational awareness of construction work ensures work is on schedule/ budget. Track progress and compliance, optimise design changes and material use, make "on-the-fly" decisions with daily reports and completion statuses.



# Geospatial Intelligence Inside & Out

- ... Managed ArcGIS Enterprise Deployments
- ... ArcGIS Indoors Implementations
- ... Custom Applications and Widgets for ArcGIS
- ... Data collection with UAVs and Indoor sensors



## About geoConvergence:

- Founded 2008
- CAGE: 80D02
- Cleared Facility
- U.S. SBA 8a Certified
- GSA MAS Schedule:  
#47QTCA21D00AH
- [geoConvergence.com](http://geoConvergence.com)

## Coming Soon to Marketplace:

- Printer for ArcGIS Online
- Who Are Your Elected Officials
- Reprecincting & Voter Management Toolkit

## Attention Federal Contractors:

Are you looking for an 8a Protégé?  
If so, we look forward to hearing from  
you.



**esri**

Partner Network  
Silver



ArcGIS Indoors  
Specialty



Release Ready  
Specialty



Federal Small Business  
Specialty



ArcGIS Online  
Specialty



ArcGIS Marketplace  
Provider



# BE SURE TO VISIT THE *ESRI* EVENTS PAGE TO FOLLOW UPCOMING EVENTS

- See upcoming *Esri Events*
- View past events *proceedings*
- Join *User Groups* around the world
- *Sign up for emails* to be the first to know about events

[\*\*esri.com/events\*\*](https://esri.com/events)

