



ERGIS
25

**2026 Esri Energy Resources GIS
Conference**

***SPONSOR AND
EXHIBITOR
OPPORTUNITIES***

**May 18-20, 2026
Houston, Texas**

Powering the Future

As energy needs increase, so does the demand for experienced professionals who understand the power of GIS. This event will bring together industry thought leaders from across the oil and gas, pipeline, and renewables sectors for three days of learning and discussions about the role of GIS in energy.

Why Sponsor or Exhibit?

- Engage with top professionals from oil and gas, pipeline, and renewables—industries actively investing in GIS solutions to drive innovation and efficiency.
- With three days of focused learning and discussion, this event fosters meaningful conversations that lead to long-term collaborations and customer growth.
- Whether you're offering cutting-edge technology, services, or insights, this is your chance to demonstrate your value to an audience actively seeking GIS expertise.

What's New

NEW!

"New" badges throughout the prospectus—these highlight our latest packages, crafted to deliver standout experiences and fresh value. We're confident they'll be crowd favorites at this year's event.

New this Year: Deposit Required

New for 2026: Upon confirmation of your booth and eligibility, a deposit invoice for 50% of your total order will be issued as part of the exhibitor agreement.

You'll have 30 days from the invoice date to submit payment in order to secure your booth location and selected items.

When final invoices are prepared in winter, your deposit will be credited toward the total before being sent to your team.

If your order is finalized during the application period, you're also welcome to pay in full at that time.



Terms and Conditions

All sponsors and exhibitors must review and accept the updated Exhibitor Agreement as part of the application process. This year's agreement includes important changes from previous versions, so please read carefully.

You'll be prompted to sign via AdobeSign or may assign the agreement to a designated legal contact within the portal during the application process.

Please note that edits are not permitted unless expressly approved by Esri and its legal team. For questions or clarification, contact us at ergis-exhibits@esri.com.

View the complete agreement [here](#).

Certificate of Insurance (COI)

Each exhibitor on the Expo floor is required to submit a Certificate of Insurance (COI). This document should be provided by your insurance company and must list Esri as the certificate holder/additional insured.

If you are unable to get coverage, you may also purchase an event specific coverage policy in which you will be included in our coverage for \$100. You can add this to your order form or we can add it on your behalf. If we do not receive your COI one week before the event, we will automatically charge the \$100 fee to your order for coverage.

If you are assigned or order insurance coverage from Esri, you are still held responsible to all policies listed in the Exhibitor Agreement.

Policies must have a minimum of \$1,000,000 USD amount of general liability coverage.



Thank You Again to Those Who Joined in 2025

Sponsor



Exhibitors

- | | | |
|------------------------------|-------------------------|------------------------------|
| • Agere Integrity, LLC | • KiloNewton LLC | • PwC |
| • Altamira | • LandGate | • Regrid |
| • American Innovations Ltd. | • Leica Geosystems | • ReportAll USA |
| • Bad Elf | • Logic Solutions Group | • Resource Data |
| • Baron Weather | • Magnolia River | • Rextag Corporation |
| • Blue Sky Evolution LLC | • Maxar Intelligence | • ROK Technologies, LLC. |
| • CHA Integrated Solutions | • MISTRAS Group | • Rosen USA |
| • Cintoo US Inc. | • Moravec Labcs, LLC | • Safe Software Inc |
| • DTN | • NV5 | • SkyWatch |
| • Endeavor Business Media | • Pandell | • TeachMeGIS |
| • ENTRUST Solutions Group | • Peloton | • True Grid LLC |
| • Frontier Precision, Inc. | • Petro IT | • VertiGIS |
| • Geonamic Systems | • PODS Association | • Western Land Services, Inc |
| • Global Information Systems | • PUG | • WSB |

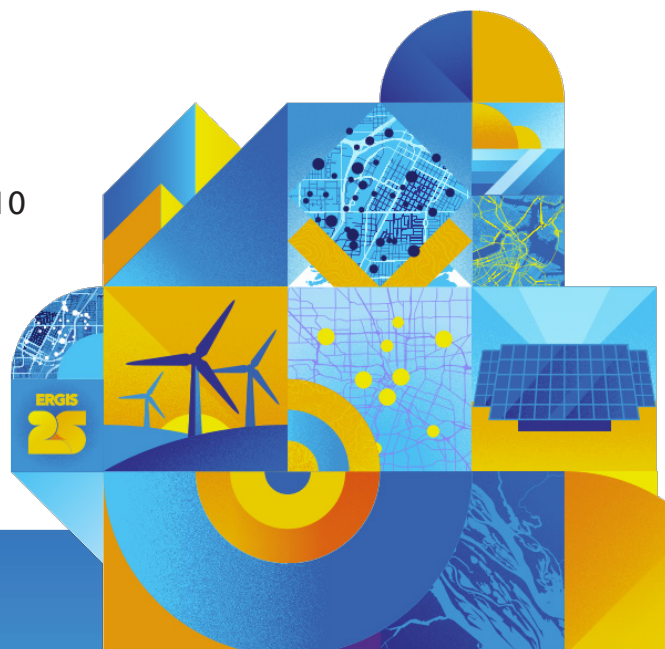
Conference Information

Event Dates:

May 18-20, 2025

Venue Name and Address:

George R. Brown Convention Center
1001 Avenida De Las Americas, Houston, TX 77010

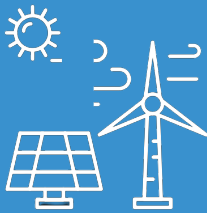


Attendee Demographics

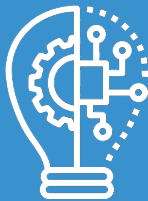
Learn more about the attendees who join us every year in Houston. Please note that this information is self reported by each attendee during the registration process.

Sector

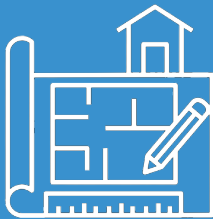
These are the statistics for our attendee's sectors they focus on or work in.



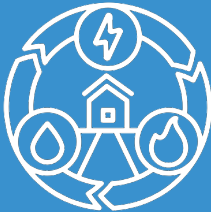
Natural Resources
75%



Technology
6%



AEC
5%



Utilities
4%



Education
3%



Local Government
2%



National Government
2%

Industry

These are the statistics for our attendee's industries they focus on or work in.



Oil and Gas
40%



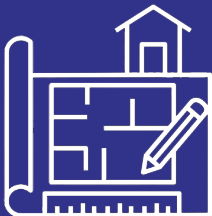
Pipeline
24%



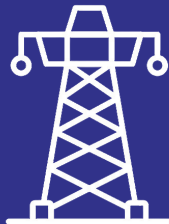
Renewables
9%



GIS and IT
6%



AEC
5%



Electric and Gas
4%



Libraries & Museums
2%

Fuctional Role

Below are the various functional roles as identified by our attendees.

45%	Operational
23%	Manager
14%	Non manager
7%	Director
7%	VP-Level
3%	C-Level

Timeline

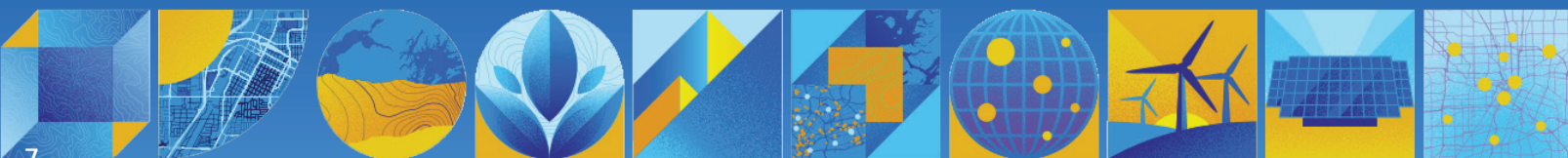
Please note these important dates to avoid late fees or delayed production.

October 27	Applications open
March 27	Applications close
April 9	Deliverables due (Esri)
May 18-20	Event dates

Exhibitor Hours

These hours include dedicated set up and tear down hours as well as Expo related events.

May 17	12:00 p.m. - 6:00 p.m.	Exhibitor move in
May 18	10:00 a.m. - 12:00 p.m.	Exhibitor move in
May 18	12:15 p.m. - 7:00 p.m.	Expo open
May 18	5:00 p.m. - 7:00 p.m.	Expo social
May 19	8:00 a.m. - 5:00 p.m.	Expo open
May 20	8:00 a.m. - 2:00 p.m.	Expo open
May 20	2:00 p.m. - 6:00 p.m.	Exhibitor move out



NEW!

Exhibitor Offerings

Say goodbye to shipping hassles and setup stress—this year, every booth on the floor is turnkey. That means Esri and our trusted vendors handle the logistics, so you can focus on what matters: making connections.

Here is how it works:

- Pick your booth model from a range of ready-to-go options
- Send us your graphics—we'll take it from there
- Arrive show-ready with your devices and promo items

No material handling. No freight. No setup or teardown. Just plug in, personalize, and start engaging. It's the easiest way to maximize impact while minimizing effort.

Turnkey Exhibit Space 10' x 10' Package | \$9,500

This package includes the following:

- 10' x 10' Turnkey booth structure and booth space on the floor
 - Choice of option Elevation 100 or Legend 100
- 10' x 10' carpet (gray)
- (2) Limerick stools
- Wastebasket
- Electricity (amount based on the turnkey structure selection)
- Mounted monitor(s) (amount based on the turnkey structure selection)
- (1) Lead retrieval device
- Nightly booth vacuuming and trash collection
- (2) Full conference badges
- Digital media kit for promoting event
 - Logo featured with company description on event website and mobile app



Choose Your Turnkey

With all booths this year being turnkey booths, all you need to do is let us know which booth layout you prefer and send your graphics and we and the vendors will take it from here.

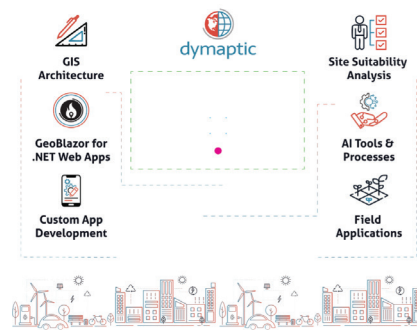
Exhibitor Package Options and Graphic Examples



Elevation 100

- One (1) lockable cabinet and graphic for cabinet
- Back wall fabric graphic
- 55" mounted monitor
- Two (2) arm lights

Plus all items included in exhibitor package!



Legend 100

- Two (2) lockable cabinets and graphics for each cabinet for customization
- Back wall fabric graphic
- 43" mounted monitor
- Two (2) arm lights

Plus all items included in exhibitor package!



NEW!

Sponsorship Offerings

We've made it easier than ever to maximize your presence. This year's sponsorship bundle includes everything you need in one powerful package:

- Turnkey booth space
- Exclusive sponsorship perks
- High-impact brand visibility

No add-ons. No guesswork. Just one streamlined bundle designed to elevate your brand and simplify your experience.

Sponsorship Bundle (10' x 10') | \$15,500

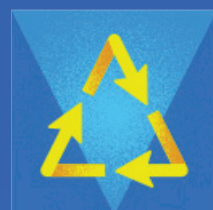
This package includes the following:

- 10' x 10' Turnkey booth structure and booth space on the floor
 - Choice of option Legend 100 or Grid 100
- 10' x 10' carpet (gray)
- (2) Limerick stools
- Wastebasket
- Electricity (amount based on the turnkey structure selection)
- Mounted monitor(s) (amount based on the turnkey structure selection)
- (1) Lead retrieval device
- Nightly booth vacuuming and trash collection
- (2) Full conference badges
- (2) Discounted full conference badges (\$575 each)
- Digital media kit for promoting event
- Logo featured with company description on event website and mobile app
- Logo featured on email to registered attendees
- Logo featured on plenary slide
- Logo featured on Expo signage
- Logo featured on Expo social signage

Sponsorship Bundle (10' x 20') | \$21,000

This package includes the following:

- 10' x 20' Turnkey booth structure and booth space on the floor
 - Choice of option Legend 200 or Grid 200.
- 10' x 20' carpet (gray)
- (2) Limerick stools
- Wastebasket
- Electricity (amount based on the turnkey structure selection)
- Mounted monitor(s) (amount based on the turnkey structure selection)
- (1) Lead retrieval device
- Nightly booth vacuuming and trash collection
- (2) Full conference badges
- (4) Discounted full conference badges (\$575 each)
- Digital media kit for promoting event
- Logo featured with company description on event website and mobile app
- Logo featured on email to registered attendees
- Logo featured on plenary slide
- Logo featured on Expo signage
- Logo featured on Expo social signage



Sponsor Package Options and Graphic Examples (10' x 10')



Legend 100

- Two (2) lockable cabinets and graphics for each cabinet for customization
- Back wall fabric graphic
- 43" mounted monitor
- Two (2) arm lights

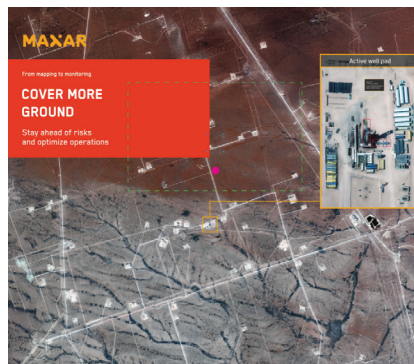
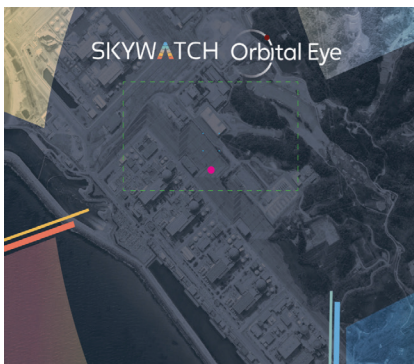
Plus all items included in the sponsorship package!



Grid 100

- Two (2) lockable built in desks with storage and graphic panels
- Back wall fabric graphic
- 55" mounted monitor
- Two (2) arm lights

Plus all items included in the sponsorship package!



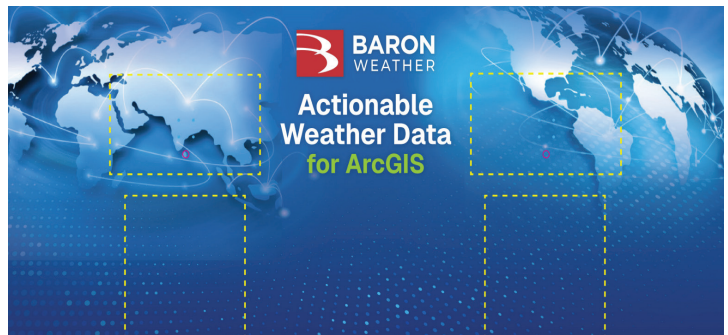
Sponsor Package Options and Graphic Examples (10' x 20')



Grid 200

- Two (2) desk style lockable cabinets and graphics for each cabinet for customization
- Back wall fabric graphic
- (2) 55" mounted monitors
- Four (4) arm lights

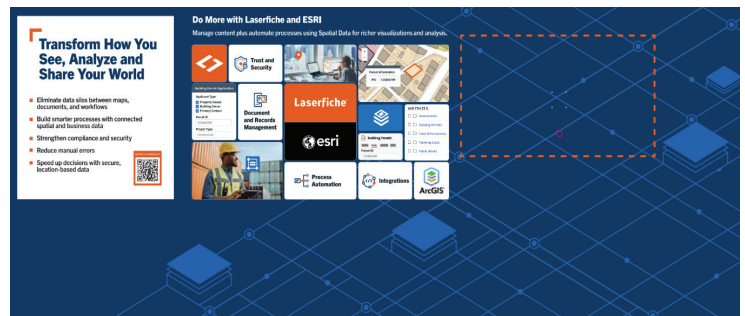
Plus all items included in the sponsorship package!



Legend 200

- Two (2) lockable cabinets and graphics for each cabinet for customization
- Back wall fabric graphic
- 43" mounted monitor
- Five (5) arm lights

Plus all items included in the sponsorship package!



THANK YOU!

We hope you and your organization will join us in Houston this May for this industry focused event.

If you have any questions, please contact us at ergis-exhibits@esri.com.

