



2021 ESRI FEDERAL
GIS CONFERENCE

ATTENDEE GUIDE

February 22–24, 2021 | Join Us Virtually

YOUR *ESRI* FEDERAL GIS CONFERENCE EXPERIENCE BEGINS HERE

Access to the Virtual Conference

Access to the Esri Federal GIS (Esri FedGIS) Conference opens on Monday, February 22.

Log in ahead of time to check out some of our features!

- STEP 1** Access [the Esri FedGIS](#) by going to [esri.com/fedgis](#).
- STEP 2** Log in with the same Esri account credentials that you used for registration.
- STEP 3** Start exploring! The event officially begins Monday at 2:00 p.m. (EST). If you log in early, you can interact with select features including the following:
- **Build out your personalized agenda**—Preview all sessions and add your favorites to your calendar.
 - **Get a head start on networking**—Schedule meetings in advance or send a message to Esri partners, Esri staff, or your peers.
 - **Visit the Expo**—Preview sponsor and exhibitor pages featuring on-demand resources like videos and tools.

Can't remember your account info? Verify your ID and password ahead of time by referencing your Esri FedGIS registration confirmation email.

Tech Specs

System Requirements

PC: Windows 7 or later
Mac: OS X 10.6 or later

Supported Browsers

The virtual Esri FedGIS is accessible on current versions of Chrome (45 and later), Safari (10 and later), Microsoft Edge (15 and later), and Firefox (49 and later). For the best experience, we recommend using Chrome. Please note that Internet Explorer 11 is not supported.

Corporate IT Settings

Some corporate IT settings will block websites. If you are attending the event on a device supplied by your employer or on your company's internet service, please have your IT team allow the following addresses:

[fedgis2021.esri.com](#)
[onlineeventapi.com](#)
[oepauthentication.azurewebsites.net](#)
[fileviewer.freemanco.com](#)
[eu.jotform.com/OEP_Support/freeman-virtual-support-portal](#)
[matchmaking.grip.events](#)
[whereby.com/](#)
[Cdn.livestream.com](#)
[Api.new.livestream.com](#)
[playback2.akamaized.net](#)
[playback.akamaized.net](#)
[livestream-f.akamaihd.net](#)
[secure-playlist.livestream.com](#)
[stream.io.api.com](#)
[ladesk.com](#)
[eum.appdynamics.com](#)

Mobile Support

Our responsive interface is designed to be mobile-friendly. Mobile versions of Chrome and Safari are supported—for best performance, ensure that your mobile browser is up-to-date.

Welcome Session

Monday, February 22, 2:00 p.m.–3:00 p.m. (EST)

Please join us for the welcome session of the first virtual 2021 FedGIS Conference! You will get a sneak peek at what to expect at the upcoming sessions on Tuesday and Wednesday. We will help you navigate the FedGIS online platform and show you how to connect with the appropriate Esri teams and engage more interactively. This session will provide a preview of the Expo, and you can learn how to connect with our partners.

Plenary Sessions

Tuesday, February 23, 10:00 a.m.–11:30 a.m. (EST)

During our Plenary Session, you'll get inspired by thought leaders, including Esri's president, Jack Dangermond, who will share how GIS connects the user community across national government. Get inspired by new ideas and practical solutions to make a positive impact and difference across national government and for society.

Wednesday, February 24, 10:30 a.m.–noon (EST)

The Plenary Session continues Wednesday, February 24, at 10:30 a.m. (EST) with product updates, user presentation segments, and interviews with special guests.

[Learn more about the Plenary Sessions.](#)

Sessions

Choose from an array of learning experiences, including technical workshops with real-time Q&As and partner sessions, and more. Attend industry-focused sessions, connect to a community, and gain insights into how others are solving similar challenges.

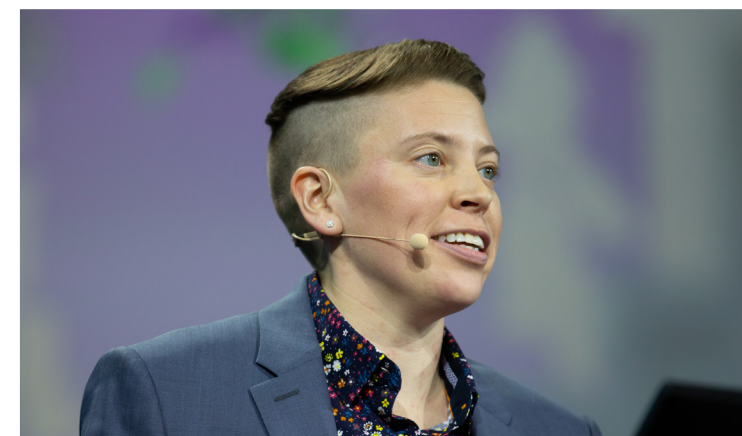
Have conflicts in your schedule? All sessions will be recorded and made available for registered attendees to rewatch within 24 hours, and will be viewable for 30 days.

[Learn more about the sessions.](#)

Expo

This is the place to explore, learn, and find true inspiration by connecting with GIS innovators from the user community, Esri experts, and the Esri Partner Network. The virtual Expo experience features interactive digital booths staffed during daytime conference hours for meetings and networking, plus on-demand content for each exhibitor will be available around the clock.

LEARN



EXPLORE

Live Expo Schedule

Monday, February 22

3:00 p.m.–5:30 p.m. (EST)

Tuesday, February 23

11:30 a.m.–4:00 p.m. (EST)

Wednesday, February 24

Noon–4:00 p.m. (EST)

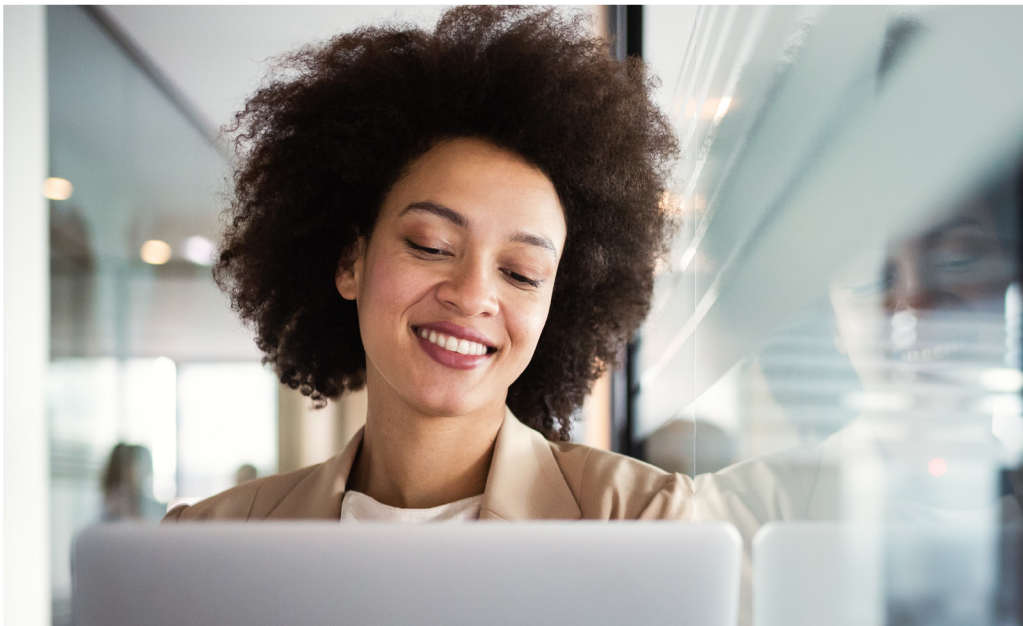
Expo Networking Features

The Expo will offer multiple options for connecting with Esri staff and partners, so you can network at your own pace! Your choices include the following features:

- **Talk with Our Experts**—Chat or request a one-on-one video meeting with designated representatives through the event's built-in virtual meeting platform.
- **Drop Your Business Card**—If you'd like someone to follow up with you directly, use this feature.
- **Visit Our Virtual Booth**—Be part of an immersive experience with our sponsors. There'll be interactive components, games, chatbots, and more. The use of each feature is available at the discretion of the exhibitor, and not all booths will offer every option.

Networking

Create connections among the thousands of users from around the world through virtual networking! Engage with sponsors and exhibitors, Esri experts, and fellow attendees through direct chats and scheduled one-on-one meetings. Chat features and meetings will be available during regular conference hours.



Designated Representatives

Esri, our sponsors, and our exhibitors will have designated representatives who are equipped to provide resources, answer questions, or put you in touch with the right person. Representatives will have their organization listed in parentheses after their name—for example, Jane Doe (Esri). Using the Talk with Our Experts feature in the Expo is the best way to connect with these individuals. Organizations may have other staff in attendance who do not have the company name identifier. You may meet them around the conference or find them assisting designated representatives at the Expo. To connect with these individuals, visit the Networking section and search by their name (you can also verify their affiliation in this section, if desired). Request to shake hands. After the other person agrees to the handshake, you can chat or schedule a meeting.

Navigation of the Virtual Conference

We're so excited to share the platform with you as soon as it opens! It's easy to navigate the virtual event from the home page, which features interactive tiles that include activities and content types. Please note that we will not be using our Events mobile app to provide navigation or notifications for the virtual event. Additionally, if you created a personalized schedule using the Favorite feature in our interactive agenda on esri.com, those selections will not transfer to the virtual platform.

Support and Troubleshooting

Here are some troubleshooting basics:

- **Log in again using a different supported browser.**
- **Check your Wi-Fi connectivity.**
- **Disconnect if using a VPN, and log in again.**
- **Contact Website Technical Assistance via the link in the footer of the event platform.**

Virtual support is available at any time during the conference with our live help team! If you have questions about navigating the conference, troubleshooting, or anything else, you can go to the FAQ section and select the Virtual Info Desk option.

Code of Conduct

Esri is dedicated to providing a welcoming, respectful, safe, and accessible environment for all. The Esri FedGIS fosters an environment where collaboration can thrive, innovation is abundant and encouraged, and all attendees are provided the opportunity to learn and grow. We ask all Esri staff and conference participants to be mindful of the **Esri Code of Conduct for Conferences and Community Spaces**, to help create an inclusive online environment that's free of harassment, aggression, and intimidation. Please be respectful in chats, meetings, comments, and other interactive conference components.

Good conduct is expected, and inappropriate language will be flagged and removed. In the event that you need to report an incident, email **FedGIS**.



Digital Swag Bag

Personalize your Esri FedGIS experience with digital swag including custom Esri meeting backgrounds, GIS-themed coloring sheets, and stretch breaks with Globie.

Download your digital swag bag.

Esri Merch Store

Yes, you read that right—Esri merchandise is officially part of the virtual event, available through the Esri Merch Store!

Order T-shirts, books, and more, conveniently online. Purchases can be made 24/7. Please note: We are only able to process orders from within the contiguous US, Alaska, and Hawaii during the conference. We hope to make shipping available to those outside the United States in the future.

Shop the Esri Merch Store.



Partner Live Sessions

BAE Systems Inc. Presentation—Applying Machine Learning and Structured Observation Management to Intelligence Production

Tuesday, February 23
1:00 p.m.–2:00 p.m.

Preligens Presentation—Maximizing National Security Investments in Artificial Intelligence

Wednesday, February 24
9:00 a.m.–10:00 a.m.

Epistemix Presentation—Using Simulation and GIS to Choose Better Futures

Wednesday, February 24
1:30 p.m.–2:30 p.m.

Partner Spotlight Talks

Quiet Professionals LLC Presentation—AI, Location Intelligence, and Cloud Computing

Tuesday, February 23
12:30 p.m.–12:45 p.m.

L3Harris Technologies Inc. Presentation—Helping Federal Agencies Take Their Remote Sensing to the Next Level

Tuesday, February 23
12:45 p.m.–1:00 p.m.

Safe Software Presentation—Ways That Data Integration Is Helping Federal Agencies

Tuesday, February 23
2:00 p.m.–2:15 p.m.

HawkEye 360 Presentation—Improving Situational Awareness with RF GEOINT

Tuesday, February 23
2:15 p.m.–2:30 p.m.

Partner Lightning Talks*

Monday, February 22
3:00 p.m.–4:00 p.m.

geoConvergence

Airspace Link Inc.

Bad Elf

Vexcel Imaging Inc.

Safe Software

Larson Design Group

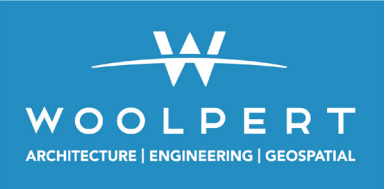
HawkEye 360

**In order of presentation*

GOLD SPONSOR



SILVER SPONSORS



FEATURED EXHIBITORS





Esri, the global market leader in geographic information system (GIS) software, location intelligence, and mapping, helps customers unlock the full potential of data to improve operational and business results.

Founded in 1969 in Redlands, California, USA, Esri software is deployed in more than 350,000 organizations globally and in over 200,000 institutions in the Americas, Asia and the Pacific, Europe, Africa, and the Middle East. Esri has partners and local distributors in over 100 countries on six continents, including Fortune 500 companies, government agencies, nonprofits, and universities. With its pioneering commitment to geospatial information technology, Esri engineers the most innovative solutions for digital transformation, the Internet of Things (IoT), and advanced analytics.

Visit us at esri.com.



Contact Esri

380 New York Street
Redlands, California 92373-8100 USA

1 800 447 9778
T 909 793 2853
F 909 793 5953
info@esri.com

esri.com

Offices worldwide
esri.com/locations