

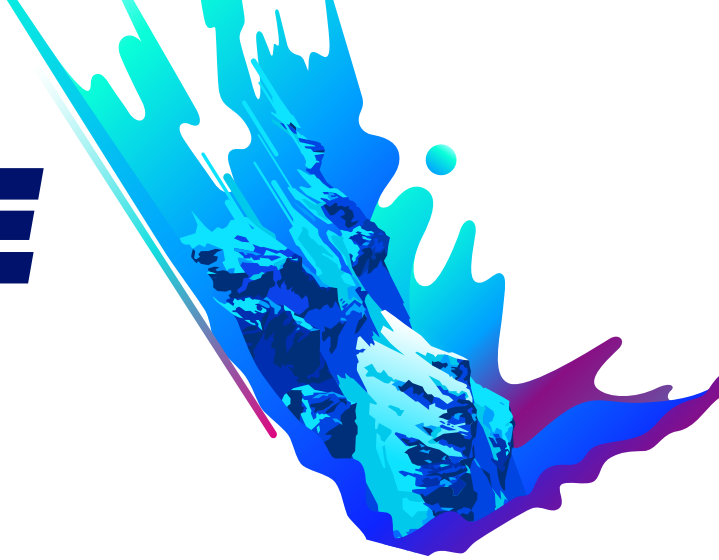
ESRI
USER CONFERENCE

ATTENDEE GUIDE

July 12-15, 2021 | Join Us Virtually



YOUR ESRI USER CONFERENCE EXPERIENCE BEGINS HERE



Access to the Virtual Conference

Access to the Esri User Conference (Esri UC) opens on Sunday, July 11.

Log in ahead of time to check out some of our features!

- STEP 1** Access the [Esri UC](#) by going to [esri.com/uc](#).
- STEP 2** Log in with the same Esri account credentials that you used for registration. Can't remember your account info? Verify your ID and password ahead of time by referencing your Esri UC registration confirmation email.
- STEP 3** Start exploring! The event officially begins Monday at 8:30 a.m. (PDT). If you log in early, you can interact with select features including the following:
- Build out your personalized agenda—Preview all sessions and add your favorites to your schedule.
 - Get a head start on networking—Schedule meetings in advance or send a message to Esri partners, Esri staff, or your peers.
 - Visit the Expo—Preview sponsor and exhibitor pages featuring on-demand resources: videos, PDFs, and more.

Tech Specs

System Requirements

PC: Windows 7 or later
Mac: OS X 10.6 or later

Supported Browsers

The virtual Esri UC is accessible on current versions of Chrome (45 and later), Safari (10 and later), Microsoft Edge (15 and later), and Firefox (49 and later). For the best experience, we recommend using Chrome. Please note that Internet Explorer 11 is not supported.

Corporate IT Settings

Some corporate IT settings will block websites. If you are attending the event on a device supplied by your employer or on your company's internet service, please have your IT team allow the following addresses:

- [uc2021.esri.com](#)
- [onlineeventapi.com](#)
- [oepauthentication.azurewebsites.net](#)
- [fileviewer.freemanco.com](#)
- [eu.jotform.com/OEP_Support/freeman-virtual-support-portal](#)
- [Cdn.livestream.com](#)
- [Api.new.livestream.com](#)
- [playback2.akamaized.net/*](#)
- [playback.akamaized.net/*](#)
- [livestream-f.akamaihd.net/*](#)
- [secure-playlist.livestream.com/*](#)
- [stream.io.api.com](#)
- [ladesk.com](#)
- [eum.appdynamics.com](#)
- [livestream.com](#)
- [quant-app.com](#)
- [quant-api.com](#)
- [freemanidentity.com](#)
- [freemanco.okta.com](#)
- [whereby.com](#)
- [filestack.com](#)
- [cloudfront.net](#)
- [oepbasicauth.azurewebsites.net](#)

Mobile Support

Our responsive interface is designed to be mobile friendly. Mobile versions of Chrome and Safari are supported—for best performance, ensure that your mobile browser is up-to-date.

Plenary Sessions

During our two Plenary Sessions, Jack Dangermond, Esri staff, and special guests will share their powerful stories of how GIS is helping shape our science, policies, and actions.

PART 1

Monday, July 12, 8:30 a.m.–noon (PDT)

Jack Dangermond will open the conference by sharing his vision for how GIS can help create a sustainable future. You will also get to see GIS in action with a variety of technology demonstrations and presentations from Esri staff and special guests.

PART 2

Tuesday, July 13, 8:30 a.m.–10:00 a.m. (PDT)

In part 2 of the Plenary Sessions, be inspired by thought leaders who will share their passionate stories and encourage you to make a positive difference.

Jack Dangermond

President, Esri

Paul Salopek

*Founder, Out of Eden Walk
National Geographic*

La June Montgomery Tabron

*President and CEO,
W.K. Kellogg Foundation*

Dr. Enric Sala

*Explorer in Residence
Pristine Seas
National Geographic*

Secretary Wade Crowfoot

California Natural Resources Agency

[Learn more about the Plenary Sessions.](#)



Sessions

Choose from an array of learning experiences, including technical workshops with real-time Q&A and partner sessions. Attend special interest group sessions, connect to a community, and gain insights into how others are meeting similar challenges.

Have conflicts in your schedule? All sessions will be recorded and made available for registered attendees to rewatch within 24 hours and will remain on the platform for 90 days.

[Learn more about the sessions.](#)

Expo

This is the place to explore, learn, and find true inspiration by connecting with GIS innovators from the Esri Partner Network. The virtual Expo experience features interactive digital booths staffed during daytime conference hours for meetings and networking, plus on-demand content for each exhibitor will be available around the clock.

LEARN



EXPLORE

Partner Content Hours

Monday, July 12

Partner Lightning Talks

3:00 p.m.–4:00 p.m. (PDT)

Partner Demos and Discussions

4:00 p.m.–5:00 p.m. (PDT)

Tuesday, July 13

Partner Presentations

10:30 a.m.–11:30 a.m. (PDT)

Partner Demos and Discussions

3:00 p.m.–4:00 p.m. (PDT)

Wednesday, July 14

Partner Presentations

8:45 a.m.–9:45 a.m. (PDT)

Partner Lightning Talks

11:15 a.m.–12:15 p.m. (PDT)

Partner Demos and Discussions

3:00 p.m.–4:00 p.m. (PDT)

Expo Features*

The Expo will offer multiple options for connecting with exhibitors, so you can network at your own pace! Your choices include the following features:

- **Schedule a Chat or Meeting**—Chat or request a one-on-one video meeting with representatives through the event's built-in virtual meeting platform.
- **Drop a Business Card**—If you'd like someone to follow up with you directly, use this feature.
- **Visit Our Virtual Booth**—Be part of an immersive experience with our partners. There will be interactive components, games, chatbots, and more.
- **Sessions and Live Demos**—You can access our partners' sessions and participate in their live demos to learn about the latest technology advancements and join in-depth topic discussions.

*The use of each feature is available at the discretion of the exhibitor, and not all booths will offer every option.

Map Gallery

Tour an expansive collection of beautiful, innovative digital maps created by our global user community. Each map showcases the powerful capabilities of GIS technology and tells stories you will want to explore.

The Virtual Map Gallery is available to view at any time during the conference. Don't forget to vote for your favorite map by Friday at 5:00 p.m. (PDT). All 2021 Virtual Map Gallery entries will continue to be available publicly in our perpetual online Map Gallery following the event.

Industry-Specific Schedules

Discover industry-specific sessions and exhibits that focus on the topics most relevant to your field and professional development. Engage with subject matter experts and learn real-world best practices from industry peers across a wide variety of sectors and specialties.

[Explore the fliers](#)

UC Central Live

UC Central Live is the newsroom of Esri UC—interact with our cohosts and special guests during livestreams throughout the event. Be sure to check in here for thought-provoking discussions, audience polls, conference tips, and more.

UC GeoPros

Go for the gold—Engage, explore, and earn UC GeoPro badges! Earn points by watching sessions, taking quizzes, using the networking features, finding Easter eggs, and more. Watch yourself climb to the very top of the leaderboard. You can learn more by visiting the home page and clicking on the UC GeoPros tile.

Connect

Create connections among the thousands of users from around the world through virtual networking! Engage with sponsors and exhibitors, Esri staff, and fellow attendees through direct chats, scheduled one-on-one meetings, and partner demos and discussions. Chat features and meetings will be available during regular conference hours.

Navigation of the Virtual Conference

We're so excited to share the platform with you as soon as it opens! It's easy to navigate the virtual event from the home page, which features interactive tiles that include activities and content types. You can also use the top navigation to access the following:

- **Sessions**
- **Expo**
- **Connect**
- **Map Gallery**
- **Store**
- **Info Desk**
- **Search**
- **Chat**
- **Notifications**
- **My Schedule**
- **Profile**

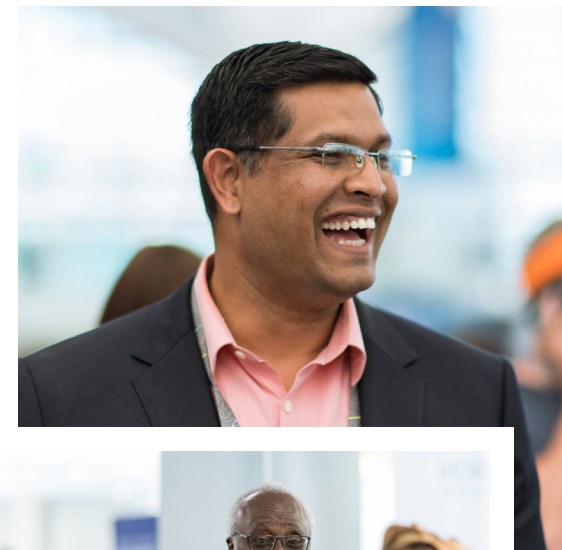
There are several new icons located in the upper right corner:

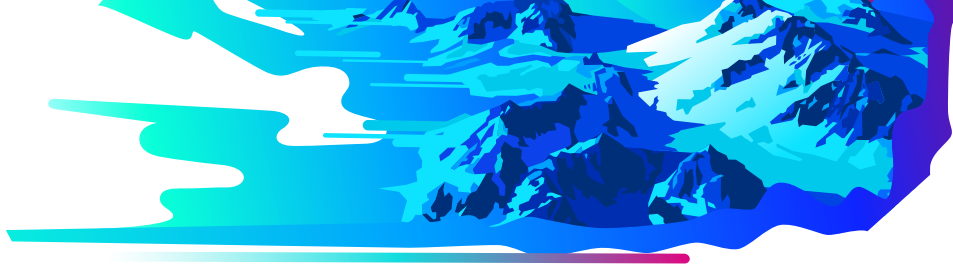
Use these to search, view chat conversations, get reminders, explore your personalized schedule, and update your profile.

If you created a personalized schedule on esri.com, your favorites will appear in the virtual platform upon initial login. Please be aware that once you have logged in to the virtual platform, any additions to your schedule will not be reflected on esri.com.



CONNECT





Support and Troubleshooting

Here are some troubleshooting basics:

- **Log in again using a different supported browser.**
- **Check your Wi-Fi connectivity.**
- **Disconnect if using a VPN, and log in again.**
- **Log out of all Esri accounts, clear cache, close browser, and log in again.**
- **Contact Website Technical Assistance via the link in the footer of the event platform.**

If you need further assistance, please contact our [live help team](#).

Code of Conduct

Esri is dedicated to providing a welcoming, respectful, safe, and accessible environment for all. The Esri UC fosters an environment where collaboration can thrive, innovation is abundant and encouraged, and all attendees are provided the opportunity to learn and grow. We ask all Esri staff and conference participants to be mindful of the [Esri Code of Conduct for Conferences and Community Spaces](#) to help create an inclusive online environment that's free of harassment, aggression, and intimidation. Please be respectful in chats, meetings, comments, and other interactive conference components. Good conduct is expected, and inappropriate language will be flagged and removed. In the event that you need to report an incident, email eventsconduct@esri.com.

Partner Lightning Talks

Monday, July 12

3:00 p.m.–4:00 p.m. (PDT)

Bad Elf
Berntsen International, Inc.
Carlson Software
Environics Analytics
FloodMapp
HawkEye 360
MipMap Technologies
Presagis
Spire Global

Wednesday, July 14

11:15 a.m.–12:15 p.m. (PDT)

Airbus
Critigen
CyberTech Systems and Software, Inc.
HERE Technologies
Maxar
Planet
Safe Software
Spatial Business Systems

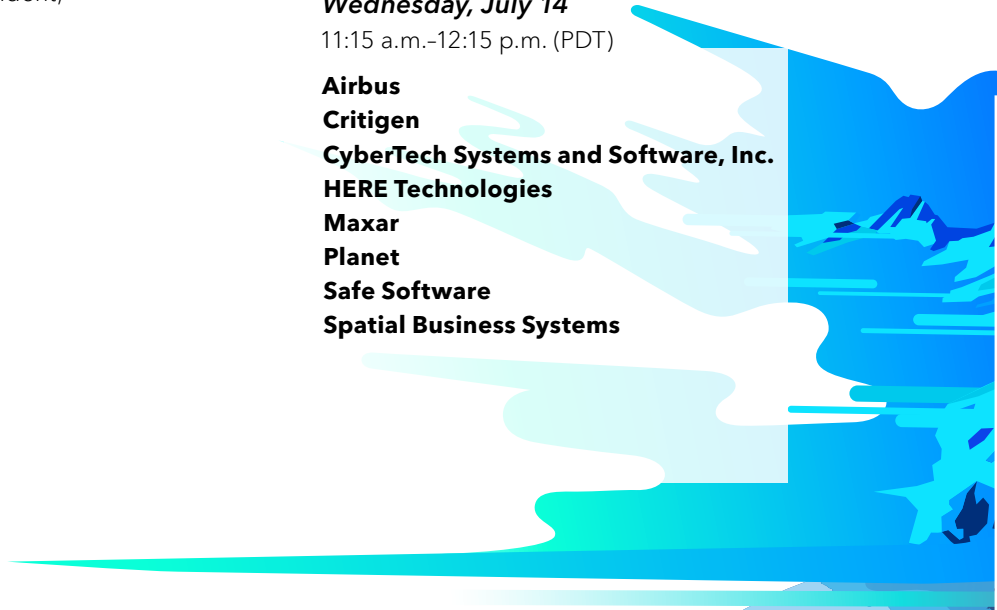
Digital Swag Bag

Personalize your Esri UC experience with digital swag including custom Esri meeting backgrounds, GIS-themed coloring sheets, and stretch breaks with Globie.

[Download your digital swag bag.](#)

Esri Store

Order Esri products, books, and more, conveniently online. Purchases can be made 24/7. Please note: We are only able to process orders from within the contiguous US, Alaska, and Hawaii during the conference.



PARTNER SESSIONS

THANK YOU TO OUR SPONSORS

Live Sessions

Tuesday, July 13

10:30 a.m.-11:00 a.m. (PDT)

Amazon Web Services—Amazon End User Computing

Autodesk—Enabling Better Workflows with BIM & GIS

Cityworks—GIS-Centric Digital Transformation in Public Asset Management

Eos Positioning Systems—Ask Me Anything—We Use Eos Arrow GPS with Mobile ArcGIS® Apps

HERE Technologies—Unlocking the Value of Location Technology

Maxar—Super-spectral Imagery Interpretation with Maxar Analysis Ready Data

Nearmap—Technical Workshop: Learn to Build Detailed LOD2 Buildings with Nearmap AI

Planet—Combating Illegal Gold Mining in the Amazon with High-Frequency Satellite Data

ROK Technologies—Expand Your GIS with Managed Cloud Services

Safe Software—Driving Digital Transformation with Enterprise Integration

Schneider Electric—Schneider Electric ArcFM Solution Update

Wednesday, July 14

8:45 a.m.-9:15 a.m. (PDT)

Cartegraph—Emerging Tech: Using GIS, IoT, Cartegraph for Smarter Infrastructure Management

CyberTech Systems and Software—Secure and Compliant Esri Managed ArcGIS Cloud Services (MACS)

EagleView Technologies—Integrating EagleView Imagery into Your Esri Workflow

L3Harris Technologies—Applying ENVI Image Analytics and ArcGIS: Disaster Response Use Cases

Locusview—Feed High-Fidelity Data to GIS with Locusview's Digital Construction Management

SAP—The Power of Business and Location Data: Use Cases of Esri ArcGIS and SAP HANA

SSP Innovations—What You Need to Know to Make Your Move to the Utility Network

Trimble Inc—Get the Best from Your Esri Field Apps Using Trimble GPS

VertiGIS—Supercharging ArcGIS Web AppBuilder with Hosted Geocortex Widgets

Wejo—What Can Connected Vehicles Tell Us about Our Roads?

Spotlights

Tuesday, July 13

11:15 a.m.-11:30 a.m. (PDT)

3-GIS—VZ3GIS Project Overview

Airbus—Easy Access to Satellite Imagery Using the Airbus OneAtlas Data Publisher in ArcGIS

CentralSquare Technologies—CentralSquare and Esri Working Together

CyberTech Systems and Software—GeoShield Real-Time: A Force Multiplier for Ogden City Police Department

GeoComm—Bringing GeoComm Indoor Maps to Public Safety

GeoDecisions—GIS Data Fabric to Tune Your Digital Transformation

L3Harris Technologies—Helping GIS Users Take Their Remote Sensing to the Next Level

Spatial Business Systems—GIS, Digital Twins and the Digital Thread

UDC Inc.—Enhanced Gas Safety and Customer Service—Accurate Reconciliation of Meters and Services at PG&E

Vectorworks, Inc.—Design with Nature; Design with Data

Wednesday, July 14

9:30 a.m.-9:45 a.m. (PDT)

Autodesk—Connecting GIS to Design: A Civil Engineer's Workflow

AWS—Amazon Culture

con terra GmbH—security.manager: Making Sharing Data Smarter, Easier and More Secure

DTN—Free vs. Paid Weather: Improve Weather Decision-Making Using ArcGIS

Assessment Analyst® GAMA by Esri Canada—The World's First Geographic Assisted Mass Appraisal System

Maxar—The Globe in 3D

Planet—Planet and ArcGIS Integrations

Recorded Future—Stay ahead of Global Uncertainty with Real-Time Geopolitical Intelligence for Esri

Safe Software—How Enterprise Automation Can Improve Efficiency

Sambus Geospatial—Urban Mobility, GIS for Transit

Schneider Electric—Schneider Electric Technology Update

GOLD SPONSORS



SILVER SPONSORS



BRONZE SPONSORS





Esri, the global market leader in geographic information system (GIS) software, location intelligence, and mapping, helps customers unlock the full potential of data to improve operational and business results.

Founded in 1969 in Redlands, California, USA, Esri software is deployed in more than 350,000 organizations globally and in over 200,000 institutions in the Americas, Asia and the Pacific, Europe, Africa, and the Middle East. Esri has partners and local distributors in over 100 countries on six continents, including Fortune 500 companies, government agencies, nonprofits, and universities. With its pioneering commitment to geospatial information technology, Esri engineers the most innovative solutions for digital transformation, the Internet of Things (IoT), and advanced analytics.

Visit us at esri.com.



Contact Esri

380 New York Street
Redlands, California 92373-8100 USA

1 800 447 9778
T 909 793 2853
F 909 793 5953
info@esri.com
esri.com

Offices worldwide
esri.com/locations

Copyright © 2021 Esri. All rights reserved. Esri, the Esri globe logo, ArcGIS, The Science of Where, @esri.com, and esri.com are trademarks, service marks, or registered marks of Esri in the United States, the European Community, or certain other jurisdictions. Other companies and products or services mentioned herein may be trademarks, service marks, or registered marks of their respective mark owners.