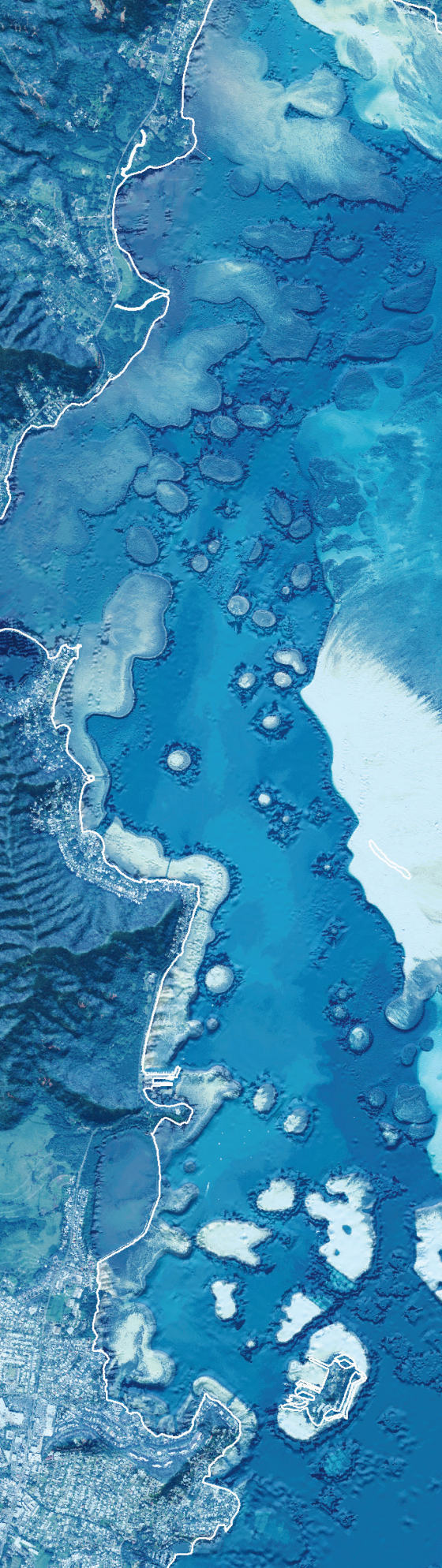




MODERNIZING MARITIME TO SUPPORT INFORMED DECISIONS



NATIONAL MARITIME INFORMATION

A nation's marine environment is vast and dynamic, and an important resource for a nation's "blue" economy. Maximizing your resources in the blue economy requires fundamental, authoritative information. The key to a country's success is a hydrographic office that is enabled with modern technology focusing on

- Collection and management of observational data in the marine environment.
- Production of authoritative maritime information, including navigation products.
- Sharing of information to ensure national prosperity and growth using a Marine Spatial Data Infrastructure (MSDI).

UNDERSTAND YOUR MARINE ENVIRONMENT

Leverage Your Maritime Information for Better Engagement and Decisions

- Easily manage, combine, and query massive amounts of bathymetric data on the desktop or the web.
- Achieve a comprehensive view of your remotely sensed information in 2D or 3D.
- Use bathymetric data beyond charting to support better decision-making for offshore energy, port security, hydrographic services, dredging operations, scientific analyses, and more.

AUTOMATE PRODUCTION OF MARITIME INFORMATION

Realize Savings and Efficiencies through Automation

- Enable highly automated workflows that support international digital and paper chart standards, as well as fully customized products.
- Maximize the value of production information through web services that support situational awareness, survey planning, coastline analysis, engineering, and more.
- Make possible disconnected operations such as teleworking and subcontractor workflows.

ENABLE NATIONAL MARINE SPATIAL DATA INFRASTRUCTURE

Fuel Economic Prosperity with Maritime Information

- Support scalable, real-time response for emergency planning, management, and mitigation to ensure the safety of lives and property.
- Enable efficient management of marine resources such as marine cadastre, offshore minerals, energy, fisheries, and national security.
- Provide insightful management and monitoring of coastal protection, change analysis, and shoreline security to many organizations.

A COMPLETE GEOGRAPHIC INFORMATION SYSTEM FOR MARITIME

ArcGIS® for Maritime—Bathymetry | Charting | Server

ArcGIS® for Maritime enables new modalities by creating an enterprise environment that is secure, quality centric, and services oriented. The platform allows the collection, management, production, and sharing of maritime content.

MAXIMIZE THE VALUE OF BATHYMETRY

ArcGIS for Maritime: Bathymetry

- Create multiresolution surfaces.
- Manage and reuse your bathymetric data.
- Reduce duplication and cost of data storage.

MORE THAN NAVIGATIONAL CHARTS

ArcGIS for Maritime: Charting gives you the ability to automate traditional S-57, S-100, and paper chart production to support safety of navigation.

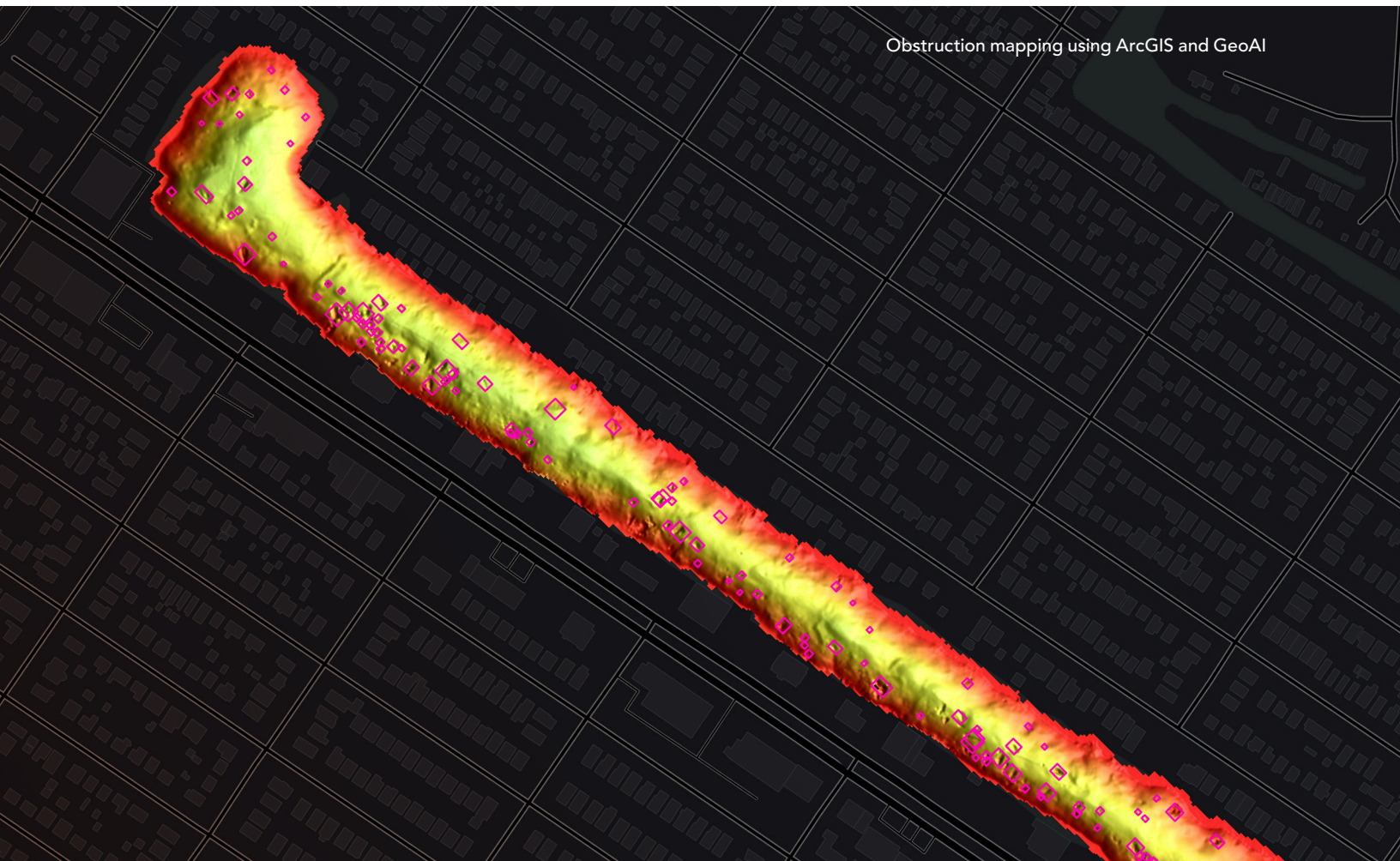
- Automate nautical chart production workflows.
- Easily incorporate and produce S-57 and S-100 Data.
- Prebuilt and configurable charting tools.

IN-DEPTH DATA, REACHING FURTHER

ArcGIS for Maritime: Server is an ArcGIS Enterprise extension that enables you to display your Electronic Navigational Charts (ENC) as a web service. Part of the Esri® Geospatial Cloud, ArcGIS for Maritime: Server applications support transportation, ports, energy, ocean science, defense, coastal zone management, and the management of international boundaries and national assets for better governance.

- Access S-57 (ENC, Inland ENC, AML) and S-63 datasets.
- Visualize and integrate all your products together as a dynamic, seamless online service.
- Combine S-57 datasets with other sources and create and share compelling web maps.

Obstruction mapping using ArcGIS and GeoAI





Esri, the global market leader in geographic information system (GIS) software, offers the most powerful mapping and spatial analytics technology available.

Since 1969, Esri has helped customers unlock the full potential of data to improve operational and business results. Today, Esri software is deployed in more than 350,000 organizations including the world's largest cities, most national governments, 75 percent of Fortune 500 companies, and more than 7,000 colleges and universities. Esri engineers the most advanced solutions for digital transformation, the Internet of Things (IoT), and location analytics to inform the most authoritative maps in the world.

Visit us at [esri.com](https://www.esri.com).



Contact Esri

380 New York Street
Redlands, California 92373-8100 USA

1 800 447 9778
T 909 793 2853
F 909 793 5953
info@esri.com
[esri.com](https://www.esri.com)

Offices worldwide
[esri.com/locations](https://www.esri.com/locations)

Copyright © 2022 Esri. All rights reserved. Esri, the Esri globe logo, ArcGIS, The Science of Where, @esri.com, and esri.com are trademarks, service marks, or registered marks of Esri in the United States, the European Community, or certain other jurisdictions. Other companies and products or services mentioned herein may be trademarks, service marks, or registered marks of their respective mark owners.