



Esri Environmental and Natural Resources eBrief



The Resources You Need to Celebrate and Protect the Earth

Explore the tools Esri offers to help you navigate federal funding and build your own climate resilience plans.

[Read More](#)



Understanding Earth: Open Science and Environmental Digital Twins

With an environmental digital twin, land managers and scientists can understand and visualize the landscape. And they can use it to run models to see what the future will look like, given human and natural impacts.

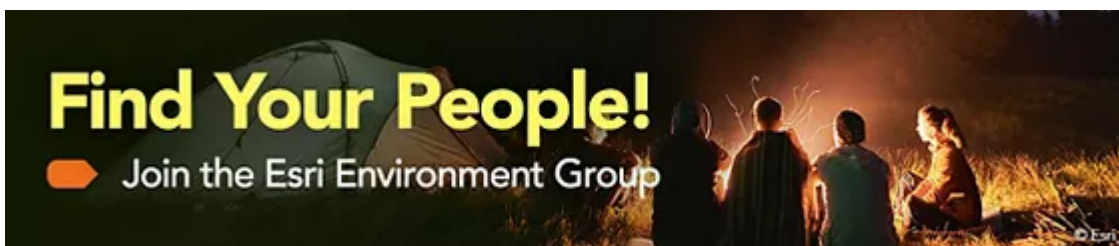
[Learn More](#)



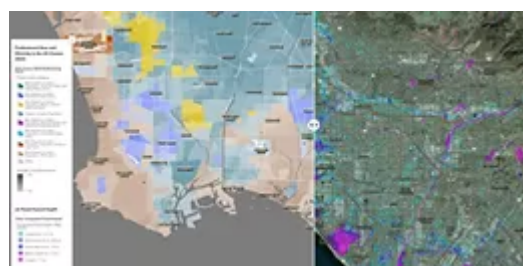
Marine Sanctuary Builds a New Experience to Engage with the Fishing Community

Gray's Reef National Marine Sanctuary used ArcGIS Experience Builder to create an eye-catching, dynamic site to improve communication and reach a larger portion of recreational fishers.

[Learn More](#)



Climate Action News



NYC: Few Cities Are Doing More to Map and Respond to Rising Waters

NYC is using its new GIS-based flood risk projections to inform its climate resilience design guidelines, which will direct the development and planning of infrastructure projects.

[Learn More](#)

Mapping LA's Flood Risk at Unprecedented Detail Reveals Hidden Perils

A high-resolution flood model revealed that damage disproportionately impacts communities of color and spurred Los Angeles County to change policies.

[Read the Blog](#)



Not finding the content valuable in the Environment and Natural Resources eBrief?

Send us an [email](#) on how we can improve, or leave us immediately by unsubscribing [here](#)

[Privacy](#) | [Contact Us](#) | [About Us](#)

Copyright © 2023 Esri. All rights reserved.

Esri, 380 New York Street, Redlands, CA 92373, USA.

