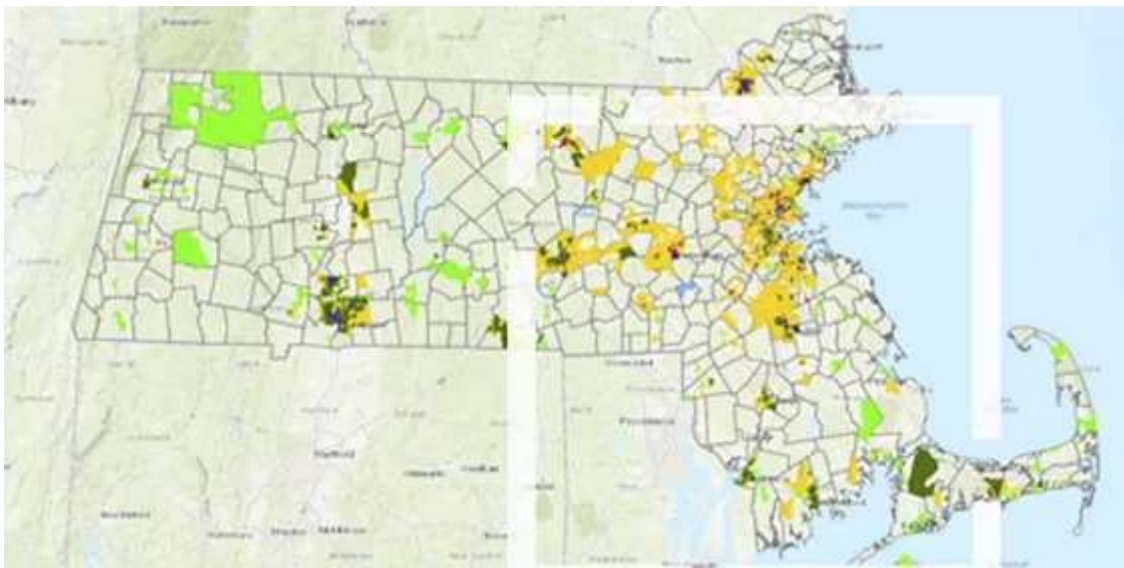


## Environmental and Natural Resources e-Brief



## Map of the Month



### Massachusetts Bolsters Resilience with Accessible Climate Data and Tools

Communities across the state can use the ResilientMass website to inform and guide project planning and implementation.

[Learn More →](#)



## Tip of the Month

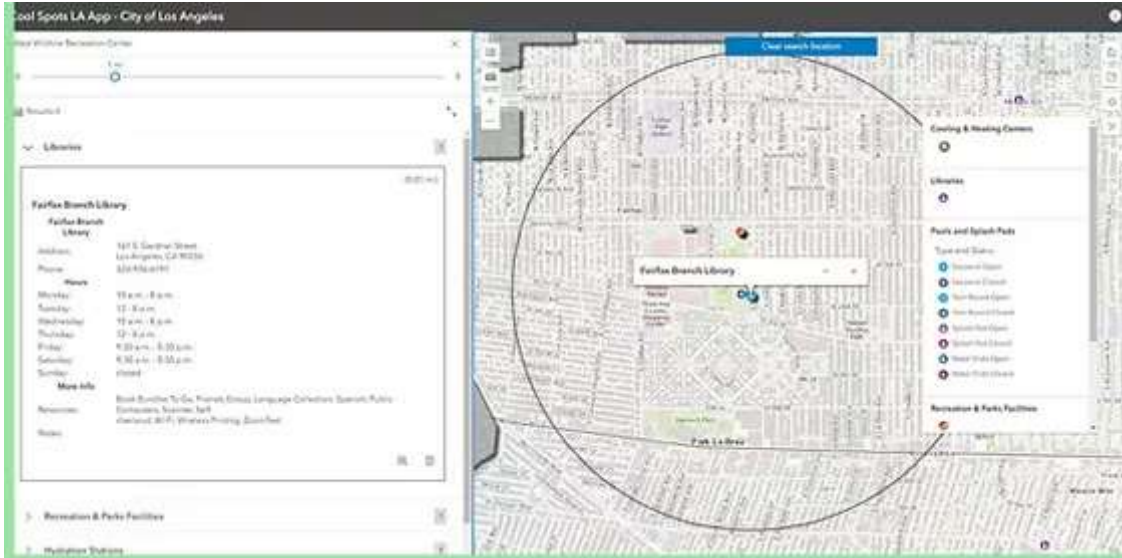


Did you know your work can be featured on the main stage in Jack Dangermond's Plenary Session at the Esri User Conference (Esri UC)? Your work has the power to inspire people! Share your images with us.

[Submit Your Images →](#)



Article



## Mapping a Path to Resilience in Los Angeles

Los Angeles applies its Equity Index and Heat Risk Mapping to measure the city's climate infrastructure investments and demonstrate the health disparities as a measure of risk.

[Learn More →](#)



Product Announcement

## Map in a Minute: Volcanic Activity



Use authoritative live feeds and other content in ArcGIS Living Atlas of the World to better understand volcanic activity.

[Follow These Steps →](#)

## Map in a Minute: Weather

Better predict weather patterns using weather and storm layers from ArcGIS Living Atlas of the World.

[Follow These Steps →](#)



**Survey**

## How Are We Doing?

Please take this short survey to let us know how you like the Environmental and Natural Resources eBriefs.

[Take the Survey →](#)

Is your information up to date?

Update Your Info

---

[Privacy](#) | [Contact Us](#) | [About Us](#)

Copyright © 2024 Esri. All rights reserved.  
Esri, 380 New York Street, Redlands, CA 92373, USA.

