



Esri Environmental and Natural Resources eBrief



Join the New Esri Environmental GIS Professionals Group

We have a new LinkedIn group to enable environmental GIS professionals to stay informed about GIS trends, participate in working groups, and network with peers and industry leaders.

[Join the Group](#)



Your New Year's Resolution Checklist

Kick off 2023 with the links and resources you need to promote your work, grow your skills, and better organize your GIS.

[Open the Blog](#)



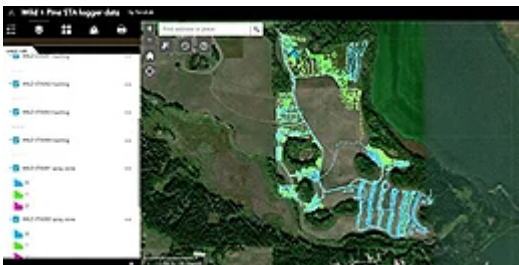
National Audubon Society Maps the Wondrous Routes of Bird Migration

The Bird Migration Explorer utilizes millions of geographic data points to visualize the incredible annual journeys made by over 450 bird species across the Northern Hemisphere.

[Open the Blog](#)



More News in Environmental and Natural Resources



Reversing the Impacts of Industrial Development while Managing



A New Model for Community Recreation

Weeds

Using GIS-based weed-spraying technology, environmental restoration organizations are working to transition grassy fields that are no longer suitable for conventional agriculture back to natural forest.

[Read the Article](#)



GIS Sets the Stage for Water Management

Montana Department of Natural Resources and Conservation (DNRC) created a publicly accessible web app that provides detailed stream flow data with ArcGIS technology.

[Read the Article](#)

See how the City of Newport News has continued to leverage GIS tools such as ArcGIS Hub and ArcGIS Experience Builder, as well as the Community Maps Program, to bring together the city's geospatial resources—and its community—into one place to support its growing digital GIS platform.

[Read the Article](#)



Partnering for Resilience: The SEMCOG Flooding Risk Tool

Learn how local government can use SEMCOG Flooding Risk Tool Dashboard, an interactive online dashboard that helps locate specific infrastructure, review its flooding risk score, and export that information to support capital improvement project investment decisions.

[Read the Article](#)

Explore the Latest Public Policy Resources

Updates to American Community Survey Layers Now Available in ArcGIS Living Atlas of the World



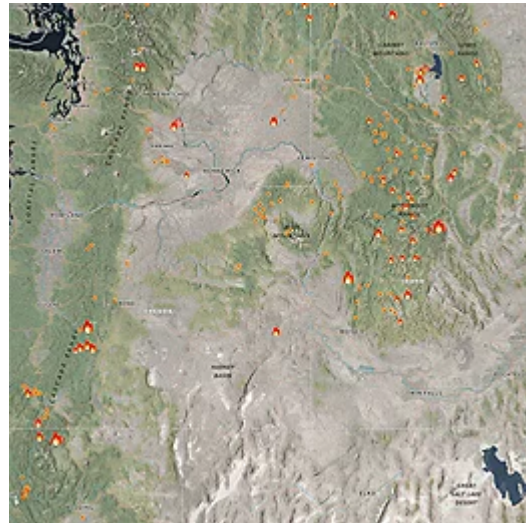
The 2017–2021 American Community Survey (ACS) five-year estimates are now available within ArcGIS Living Atlas of the World. These ready-to-use layers using ACS census data enables local officials, businesses, and researchers to understand what's taking place in their communities and helps community programs allocate resources.

[Check Out the Updates](#)

Inform Your Community Using GIS Community Content from Living Atlas: An Example for Wildfire

Using web GIS, apps are an effective way to answer the public's basic questions during times of crisis. Read this blog for a successful example.

[Read the Blog](#)



Achieve your mission with GIS software.

Apply for Esri's Small Nonprofit Organization Grant Initiative



Is your information up to date?

Update Your Info

[Privacy](#) | [Contact Us](#) | [About Us](#)

Copyright © 2023 Esri. All rights reserved.

Esri, 380 New York Street, Redlands, CA 92373, USA.

