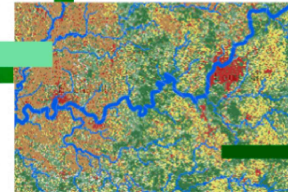


# Environmental and Natural Resources e-Brief



## Featured Story



## Real-Time 3D Monitoring Safeguards People and Bighorn Sheep in Nebraska

The Nebraska Game and Parks Commission uses GIS and VECTRONIC Aerospace's GPS to track wildlife and reduce traffic collisions.

[Read the Story →](#)



## Community Spotlight



## Three Rivers Park District: Aerial Deer Surveying with ArcGIS QuickCapture

Amanda Huber shares how the district improved its data collection process for 237,000 acres of land.

[Read the Blog →](#)



### More Content You'll Love

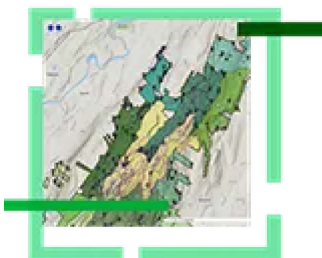
## National Guard Balances Bombs and Butterflies with GIS



Fort Indiantown Gap relies on GIS to ensure a rare butterfly thrives amidst training center bombings.

[Read the Blog →](#)

## Mohonk Preserve Transforms Volunteer Operations with GIS



New York's largest nonprofit nature preserve streamlines data collection and processing across departments.

[Learn More →](#)

## Your Guide to Making a Snowstorm Map



Get a step-by-step guide to quickly make a snowstorm map in ArcGIS Pro.

[Get the Guide →](#)



### Tip of the Month



Did you know we have a site specifically for environmental users like you?! Check out the latest stories from your peers, explore innovative solutions, and find out what events we will be at!

[Explore the Site →](#)

[Privacy](#) | [Contact Us](#) | [About Us](#)

Copyright © 2025 Esri. All rights reserved.

Esri, 380 New York Street, Redlands, CA 92373, USA.

