

## Reserve Your Spot for the Special Interest Group Meeting

### 2025 Esri User Conference

Don't miss our annual event for environmental professionals in San Diego, California. Hear from industry leaders, learn best practices, and grow your network. New this year: Space is limited, and you must RSVP to attend.

[Register Today →](#)

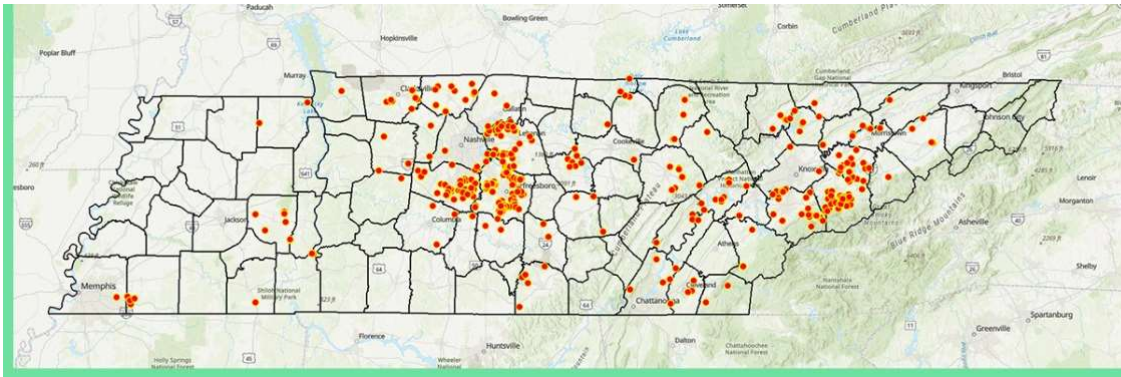


## Streamlining Environmental Protection with GIS

### Video | Environmental Permitting Webinar Series

Missed our webinar series? You can now view the recordings and see real-world examples of how organizations use GIS to transform their permitting processes.

[Watch the Recordings →](#)



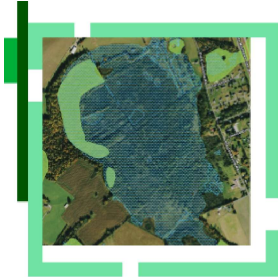
## Tennessee Revolutionizes Septic Permitting Process

### Success Story | Esri Blog

The state's rapid growth led to an updated GIS-based permit process that streamlines the workflow—from resident requests to inspector assignments and updates.

[Read the Story →](#)

## Tennessee Pioneers GeoAI-Based Wetland Tool



### More Content You'll Love | ArcNews

Based on deep-learning models, the new tool located 800,000 additional acres of wetlands.

[Read the Article →](#)

## Real-Time Data Protects Motorists and Animals



### More Content You'll Love | ArcNews

Integrating GPS collar data with ArcGIS Velocity enables Nebraska DOT to prevent wildlife collisions.

[Read the Article →](#)

---

[Privacy](#) | [Contact Us](#) | [About Us](#)

Copyright © 2025 Esri. All rights reserved.

Esri, 380 New York Street, Redlands, CA 92373, USA.

