



Environmental and Natural Resources e-Brief



Mark Your Calendars

Environment and Natural Resources SIG

Tuesday, July 16
11:30 AM–12:30 PM PDT
Esri User Conference
San Diego, CA



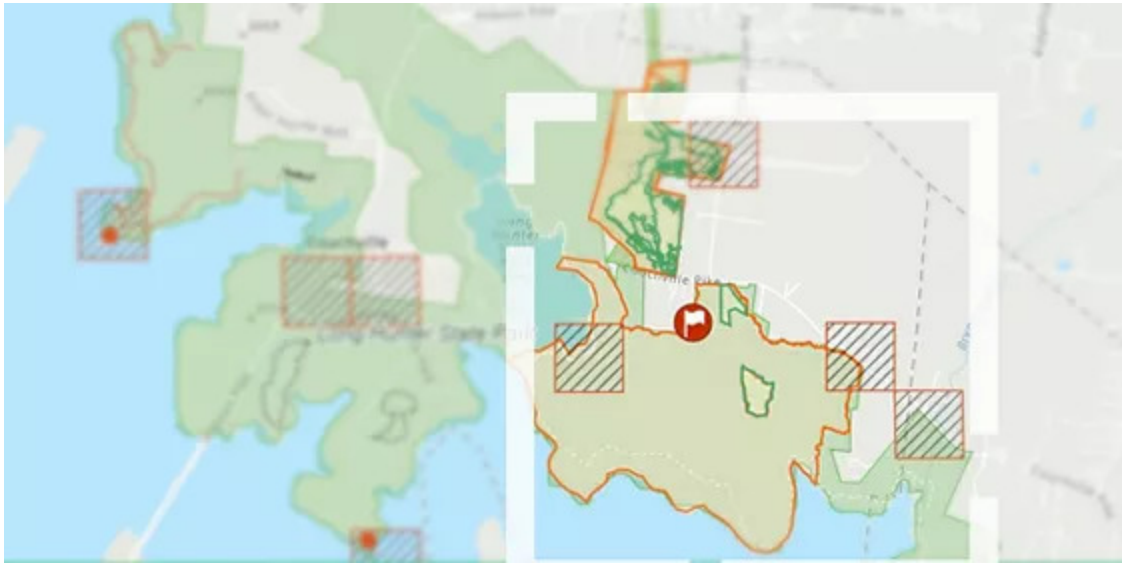
Join Your Peers in San Diego

Connect with your peers and industry experts to explore how GIS enables a holistic approach to protect, restore, and manage the environment.

[Learn More →](#)



Map of the Month



Tennessee State Parks Reach Real-Time Operational Awareness

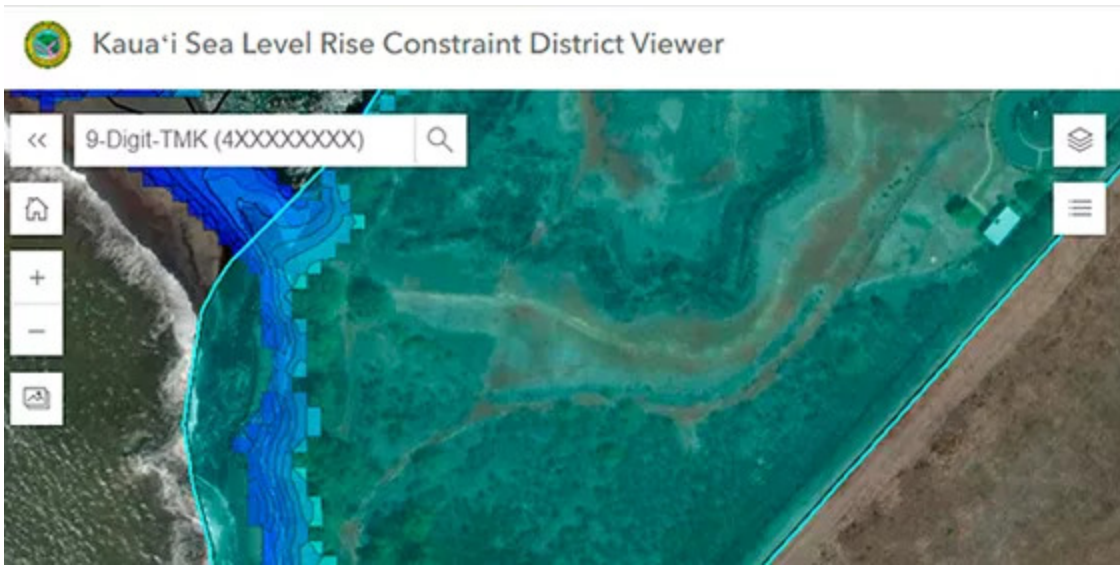
Park rangers use GIS to collect, manage, and collaborate on data for trail assessments, invasive-species treatments, and prescribed burn planning.

[Learn More →](#)

**SEE WHAT'S NEW
IN THE UC EXPO**



GIS @ Work



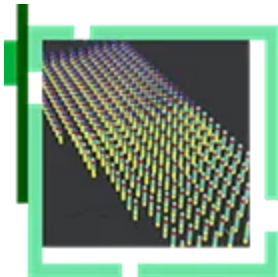
Fighting Coastal Erosion and Sea Level Rise in Kauai

The planning department used ArcGIS to display the predictive hazard data for passive flooding and high wave run.

[Learn More →](#)

More Content You'll Love

ArcGIS Helps Detect and Analyze Land Subsidence



Deformation modeling and mapping clearly show the urgency of addressing groundwater depletion in Arizona.

[Learn More →](#)

Equity across Environment and Conservation



Explore examples of using GIS for environmental justice, such as California's CalEnviroScreen and Michigan's MiEJScreen.

[Read the Blog →](#)

[Privacy](#) | [Contact Us](#) | [About Us](#)

Copyright © 2024 Esri. All rights reserved.

Esri, 380 New York Street, Redlands, CA 92373, USA.

