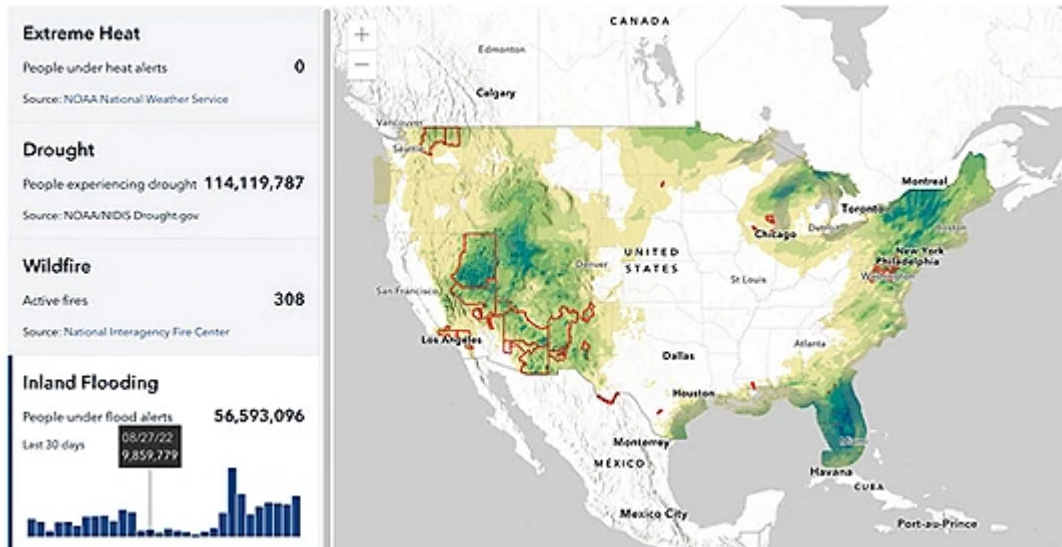
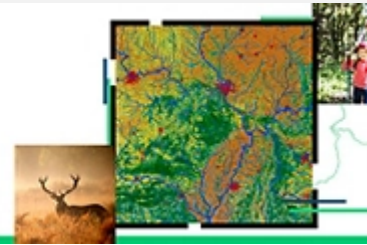




Esri Environmental and Natural Resources eBrief



Communities Can Find Climate Data, Funding Sources in New White House Portal

Esri collaborated with the Biden-Harris administration to create the Climate Mapping for Resilience and Adaptation (CMRA) portal to help state and local governments solve complex issues related to climate change.

[Learn More](#)



LA's New Chief Heat Officer Expands Cooling Centers Based on Equity Maps

The City of Los Angeles implements an interactive app and web map displaying over 200 cooling centers and spots for refuge from extreme heat.

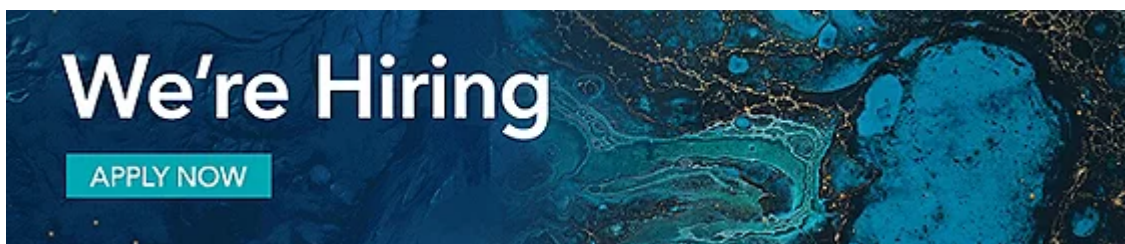
[Learn More](#)



Data for Decision: Transforming Facilities to Combat Climate Change

Buildings are responsible for more than 40 percent of the world's greenhouse gas emissions. To effectively protect our planet, we must transform the way we design, manage, and use our buildings, and GIS can help.

[Learn More](#)



Catch Up on Our Webinar Series



GIS for Environmental Regulation

Learn how you can perform an environmental review request using ArcGIS Survey123 and ArcGIS Workflow Manager.

[Launch the Recording](#)



NAEP and Esri Celebrate GIS Day

The National Association of Environmental Professionals (NAEP) and Esri host an inspiring panel discussion with representatives from NatureServe, Ecobot, and other leading organizations.

[Launch the Recording](#)

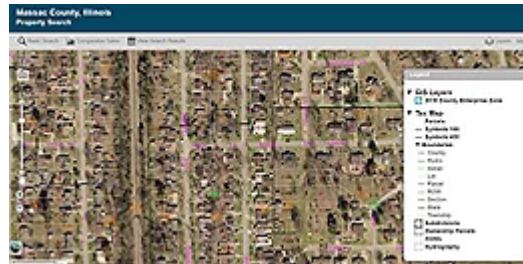
More News in Environmental and Natural Resources



A Global Approach to Preventing Plastic from Reaching the Ocean

Eleven million metric tons of plastic reach the ocean each year, and that number could triple by 2040 if large-scale solutions aren't developed quickly. OpenOceans Global, a San Diego-based organization, employs GIS and community science to help stop the flow of plastic.

[Learn More](#)



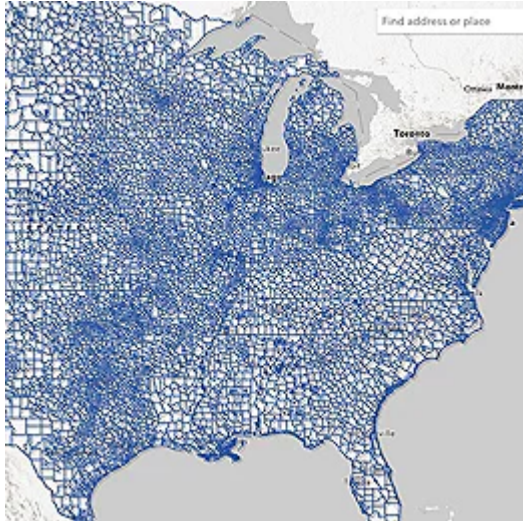
Building Out the Nation's EV Charging Network

The US Departments of Transportation and Energy have made \$5 billion available under the new National Electric Vehicle Infrastructure (NEVI) Formula Program to build out a national electric vehicle charging network.

[See the Interactive Map](#)

Explore the Latest Public Policy Resources

School Districts and Socioeconomic Information Sidebar Application



This application explores school district socioeconomic characteristics throughout the United States, like the number of public and private schools, school enrollment figures, disconnected youth within a district, children living below the poverty level, and children with no internet at home.

[Visit the Application](#)

Inflation Is Coming. What's a GIS Analyst to Do?

Understand inflation when mapping median household income, home value, and other attributes with monetary values.

[Learn More](#)



Achieve your mission with GIS software.

Apply for Esri's Small Nonprofit Organization Grant Initiative



[Privacy](#) | [Contact Us](#) | [About Us](#)

Copyright © 2022 Esri. All rights reserved.

Esri, 380 New York Street, Redlands, CA 92373, USA.

