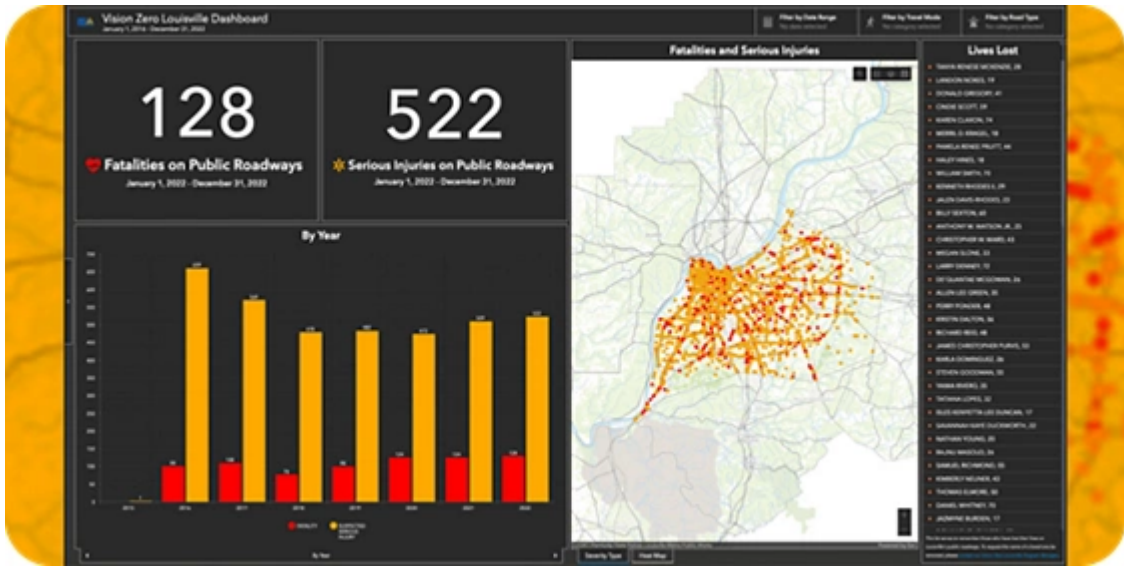




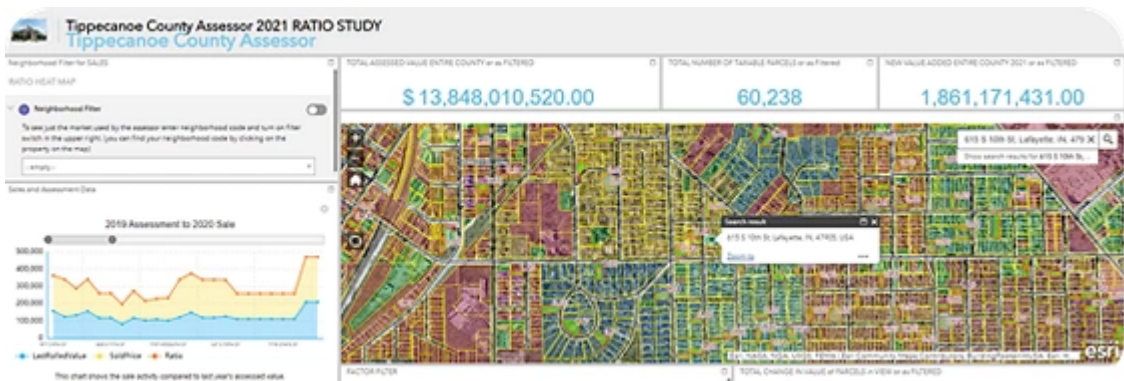
Esri State and Local Government eBrief



Vision Zero: Maps Fuel Funding for Equitable Traffic Safety in Louisville

Transportation planners and engineers in Louisville, Kentucky, prioritized roadway safety improvement projects by identifying high-risk corridors and vulnerabilities in communities.

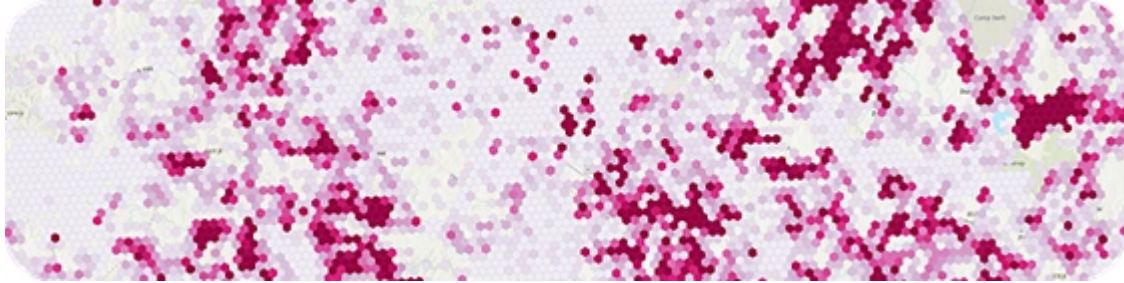
[Learn More](#)



Tippecanoe County, Indiana, Identifies Additional \$1.86B in Property Value

Accessible maps with accurate data enable the county to accurately assess property value and better defend appeals.

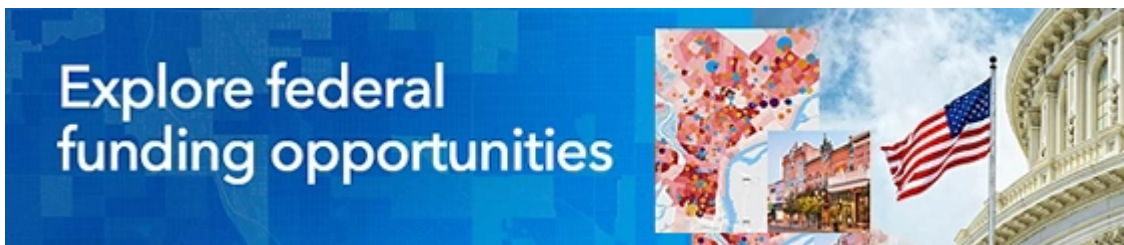
[Read More →](#)



FCC Broadband Data Collection (BDC) Released

Replacing the infamous Form 477 dataset, the new BDC provides fixed broadband availability data. It is now readily available in the ArcGIS Living Atlas of the World.

[Explore the Data →](#)



New Resources to Address Common Challenges



Right-of-Way Management: Preparing for Infrastructure Expansion

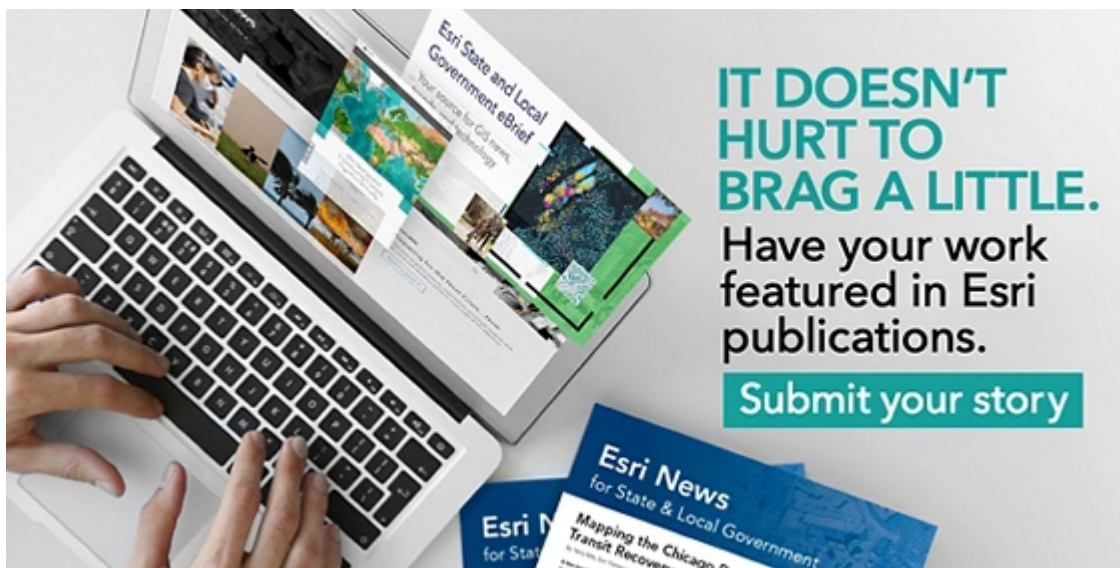
Organizations must rethink the use and management of rights-of-way (ROW) as they prepare for the next generation of infrastructure.

[Get the Report →](#)

Substance Misuse: Responding in Crisis Mode

A GIS framework can provide understanding and a path forward to address substance misuse disorders, a complex issue facing our communities.

[Get the Report →](#)



Not finding the content valuable in the State and Local eBrief?

Send us an [email](#) on how we can improve, or leave us immediately by unsubscribing [here](#)

[Privacy](#) | [Contact Us](#) | [About Us](#)

Copyright © 2023 Esri. All rights reserved.

Esri, 380 New York Street, Redlands, CA 92373, USA.

