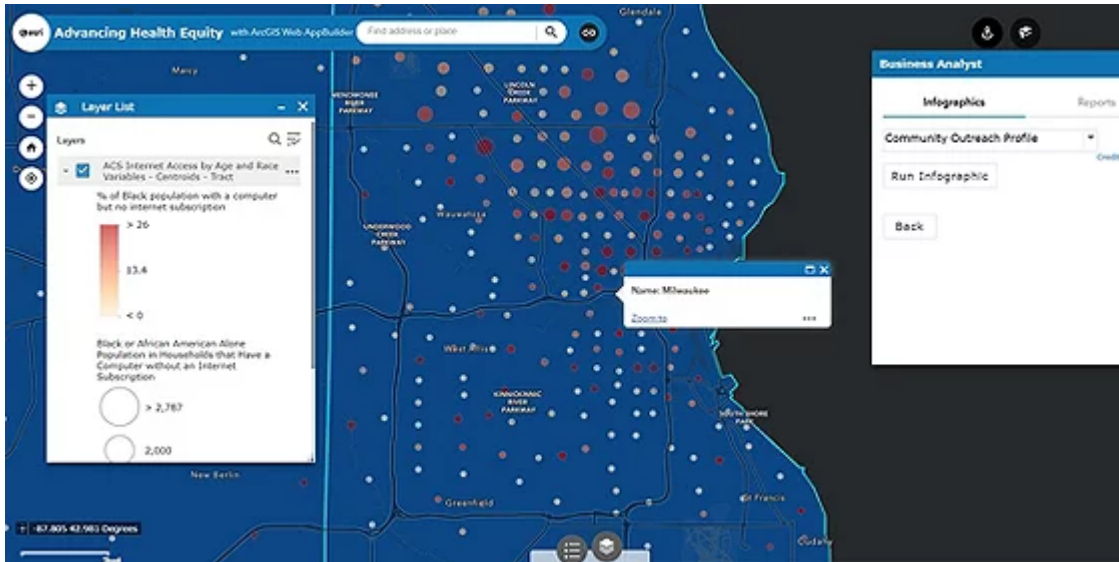




# Esri State and Local Government eBrief



## Using Location Intelligence to Address the Impact of Racial Injustice on Health Equity

Check out the recent discussion on the intersection between racial injustice and health inequity and how GIS can help promote equality.

[Watch the Video](#)

Share:   



## Five Ways to Address Homelessness and Housing Challenges with GIS

Download our latest e-book that outlines the five ways organizations can use GIS to address homelessness and housing challenges.

[Get the E-book](#)

---



## Five Ways COVID-19 Pushed Digital Services into the Spotlight

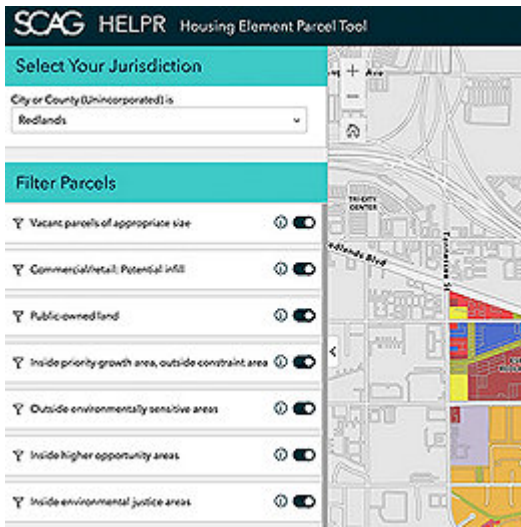
From fast-paced development to a focus on equity, GIS proved to be a standard technology for governments to respond to the pandemic.

[Read More](#)



## Using Data to Create a More Prosperous and Equitable Future for Southern California

The Southern California Association of Governments (SCAG) shares insight into its revolutionary new Regional Data Platform that will transform the regional planning efforts for the largest regional government organization in the nation.



See More →

---

## New Report: How to Achieve Data-Driven Performance



Our final report in the Smart Communities series explores how organizations are embracing advanced data analysis and performance management tools to achieve data-driven performance.

Get the Report→

---

Is your information up-to-date?

UPDATE YOUR INFO



# Explore the New State and Local Government Community Page

Made Just for You

[Esri.com](#) | [Privacy](#) | [Contact Us](#)  
Copyright © 2021 Esri. All rights reserved.  
Esri, 380 New York Street, Redlands, CA 92373, USA.

