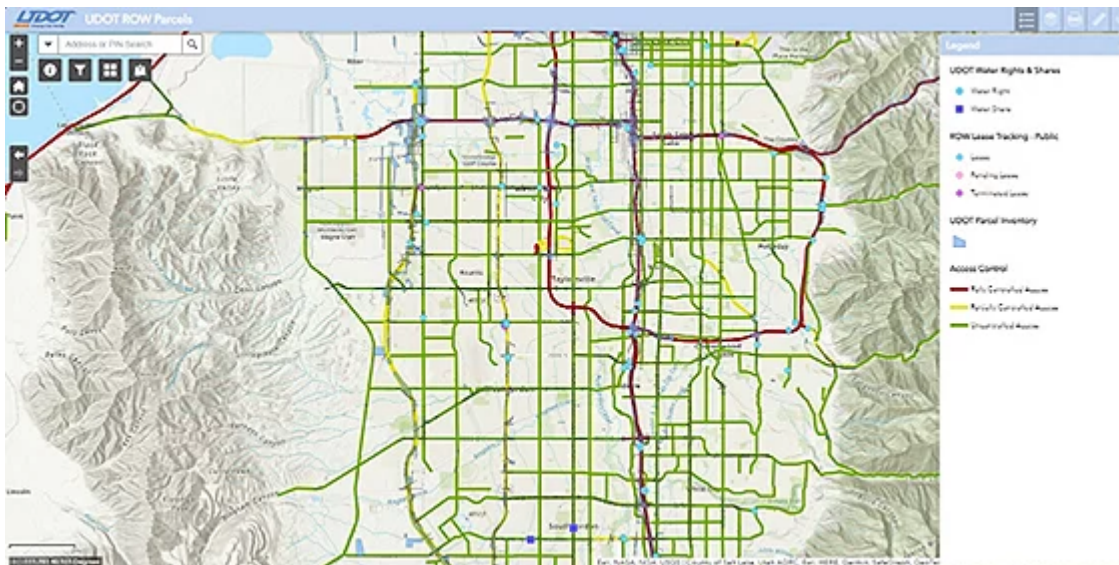




Esri State and Local Government eBrief



Utah Department of Transportation Gains Multiple Benefits from Managing Its Right-of-Way Workflows with GIS

Manual workflows and lack of insight resulted in Utah Department of Transportation (UDOT) repurchasing land it already owned. Now, its right-of-way GIS has allowed it to better track and increase annual surplus property revenue from \$2 million to \$32 million.

[Learn More](#)

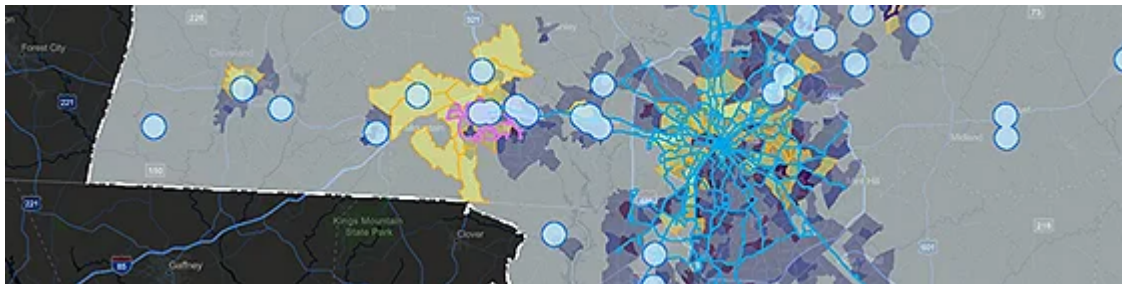
Share:



Reno, Nevada, Leads with GIS to Meet Growing Population and Business Needs

As population growth increased, city leaders knew they needed an enterprise GIS for comprehensive situational awareness to guide decisions on equity, community outreach, crime reduction, and economic development.

[Read the Blog](#)



Driving toward Equity in Addressing Community Mobility

With a strong focus on creating a more equitable and connected transportation system, Centralina Regional Council has created a GIS-based planning portal containing a wealth of data and analysis. The system was designed to help transportation and land-use planners address equity issues in its communities.

[Launch the Article](#)

Explore federal funding opportunities



Explore the Latest Public Policy Resources



Broadband Access within Your Community: A Geographic Approach

Explore the digital divide in your city with this broadband exploration app. Learn about access to the internet and how that intersects with various socioeconomic factors within your area.

[Check It Out](#)



Using Maps to Drive Environmental Policy

This recorded workshop from the National Association of Environmental Professionals Conference provides step-by-step guidance on how to use the Esri Maps for Public Policy site in your environmental projects.

[Launch the Recordings](#)

Highlights from the Esri User Conference



White House Climate Policy Office Announces Data and Tools to Address Climate Change

David Hayes, special assistant to President Biden, presents a one-of-a-kind portal with tools that can empower jurisdictions across the nation to address and analyze climate impacts.

[Launch the Announcement](#)



Governor Tim Walz of Minnesota Leads through Maps

Hear how a former geography teacher and now governor uses the geographic approach to make better-informed decisions to keep Minnesotans safer and healthier and have access to more opportunities.

[Launch the Video](#)

More News in State and Local Government

An Innovative Approach to Environmental Asset Management and Public Engagement



As urbanization impacted Carlsbad, California's water quality, the city launched a new hub to modernize data management, reporting, and information sharing.

[Read More →](#)

The Importance of ARPA Equity

The American Rescue Plan Act of 2021 (ARPA) presented opportunities for communities to further their equity goals. Many are leveraging GIS to understand inequities and prioritize where funding should go.

[Learn More →](#)



INCORPORATE AN EQUITY LENS INTO YOUR WORK

Get the Social Equity Analysis solution today.

ACCESS NOW



Is your information up to date?

[Update Your Info](#)

[Privacy](#) | [Contact Us](#) | [About Us](#)

Copyright © 2022 Esri. All rights reserved.

Esri, 380 New York Street, Redlands, CA 92373, USA.

