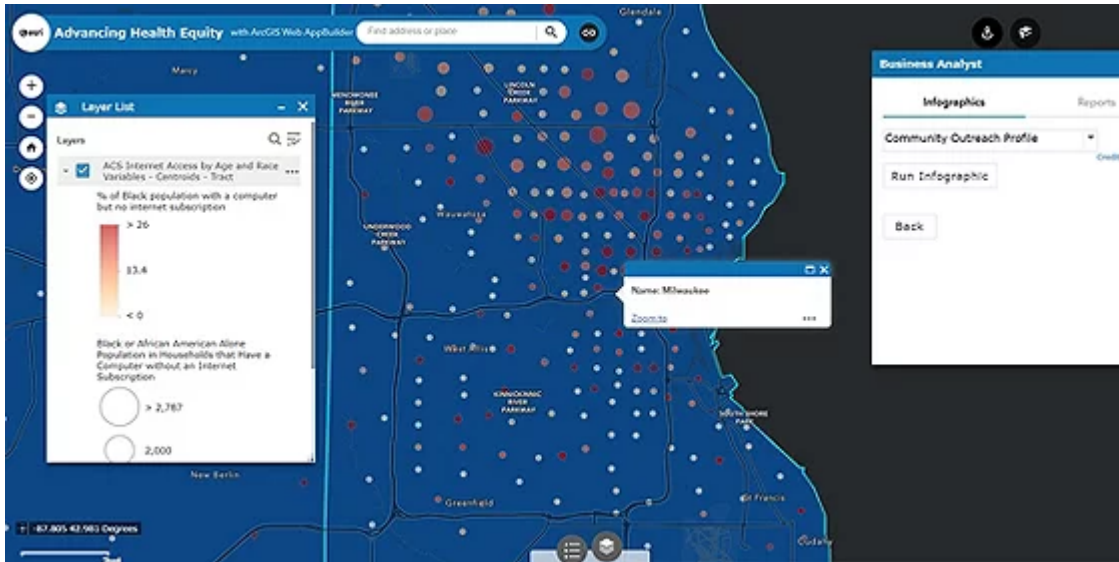




# Esri Health and Human Services eBrief

Your source for GIS news, trends, and technology



## Using Location Intelligence to Address the Impact of Racial Injustice on Health Equity

Check out the recent discussion on the intersection between racial injustice and health inequity and how GIS can help promote equality.

[Watch the Video](#)

Share:   



## Bookmark This: Here Are the GIS Datasets, Applications, and Tools You Need for Vaccine Distribution

As vaccine distribution ramps up, don't forget to check out Esri's COVID-19 Vaccine Distribution Resources hub site, which provides resources, tools, and best practices to distribute vaccinations effectively and equitably.

[Check Out the Hub Site](#)

---



## Five Ways COVID-19 Pushed Digital Services into the Spotlight

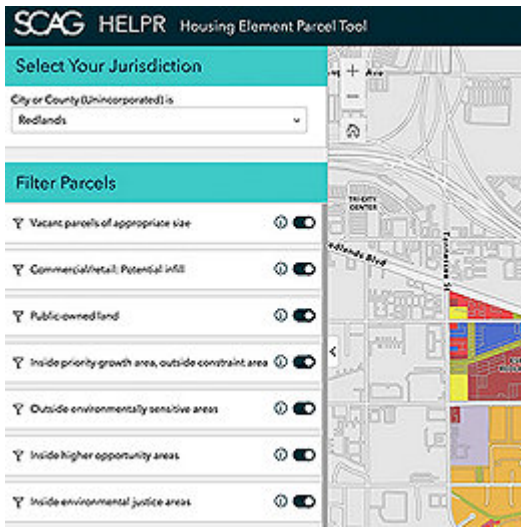
From fast-paced development to a focus on equity, GIS proved to be a standard technology for governments to respond to the pandemic.

[Read More](#)



## Using Data to Create a More Prosperous and Equitable Future for Southern California

The Southern California Association of Governments (SCAG) shares insight into its revolutionary new Regional Data Platform that will transform the regional planning efforts for the largest regional government organization in the nation.



See More →

---

## New Report: How to Achieve Data-Driven Performance



Our final report in the Smart Communities series explores how organizations are embracing advanced data analysis and performance management tools to achieve data-driven performance.

Get the Report→

---

Is your information up-to-date?

UPDATE YOUR INFO

# Esri Health & Human Services GIS Conference

April 21-22, 2021

**Register Now**



[Esri.com](#) | [Privacy](#) | [Contact Us](#)

Copyright © 2021 Esri. All rights reserved.

Esri, 380 New York Street, Redlands, CA 92373, USA.

