



Esri Health and Human Services eBrief



America's Mental Health Crisis, Mapped

Newly released health data reveals geographic patterns in the well-being of US residents.

[Read More](#)

Share:   



Climate Mapping for Resilience and Adaptation

The Climate Mapping for Resilience and Adaptation portal integrates information from across the federal government to help people consider their local exposure to climate-related hazards that potentially affect environmental health.

[Learn More](#)



NextTech: Risk Mitigation in Complex Networks

Public health agencies and food producers, distributors, and sellers can now use advanced spatial technology to trace supply chains and lessen the risk of foodborne illnesses.

[Read More](#)



More News in Health and Human Services



Global Teen Girls' Health

Adolescent girls face a very specific set of



How Integrated City Data Ensures Social Services Delivery

health issues and challenges. To raise awareness, the youth organization Global Teen Girls' Health mapped out and created an ArcGIS StoryMaps story on the different health issues girls face all over the world.

[Read More](#)

Philadelphia's Office of Integrated Data for Evidence and Action has been analyzing cross-program data to improve outreach to residents who qualify for assistance but have not applied.

[Read More](#)

GIS for Good: Responding to the Opioid Epidemic



Make a Difference on International Overdose Awareness Day with GIS

GIS technology offers many tools to address the opioid epidemic at a local level.

[Read More](#)



How Puerto Rico's Geographic Approach to Opioid Misuse Allows It to Save More Lives

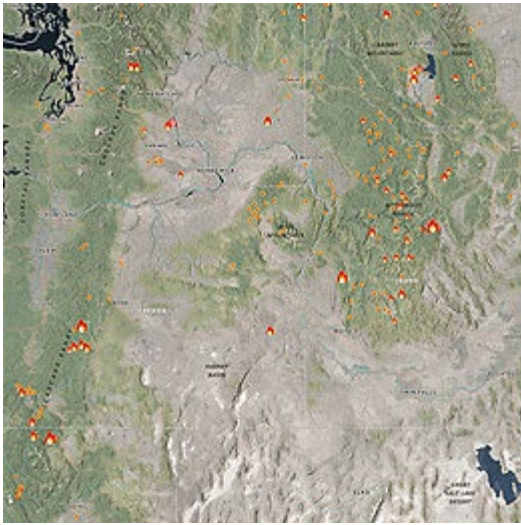
Puerto Rico has launched an effort to address the opioid epidemic by leveraging geospatial tools and analytics.

[Read More](#)

Explore the Latest Public Policy Resources

Be Wildfire Aware with This New Application

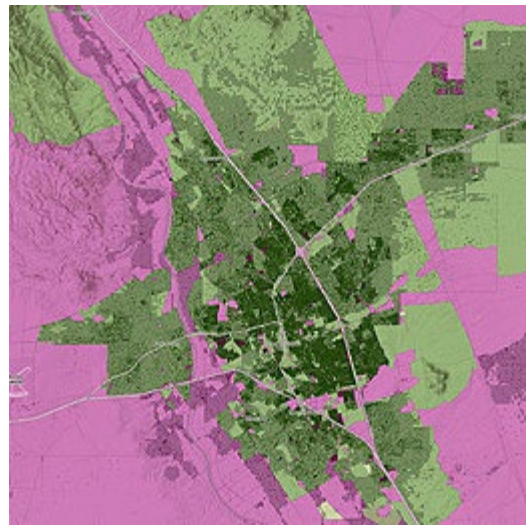
If you find yourself wondering where a fire is, how big a fire is, what the weather is like near a fire, or what the population or housing is like near a fire, look no further than the Wildfire Aware app for answers.



[See App →](#)

FCC Form 477 Broadband Layer Updated to June 2021

In preparation for the upcoming Broadband Data Collection (BDC) program, communities can leverage existing Federal Communications Commission (FCC) broadband availability data in ArcGIS Living Atlas of the World to map unserved areas and populations.



[See the Update →](#)



[Privacy](#) | [Contact Us](#) | [About Us](#)

Copyright © 2022 Esri. All rights reserved.

Esri, 380 New York Street, Redlands, CA 92373, USA.

