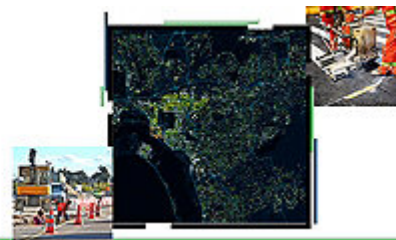




Esri Public Works & Engineering eBrief



New Public Works Webinar Series

The Esri public works team will kick off a new public works webinar series on National Public Works Week. This webinar series will run throughout the rest of the year, and it will bring you the latest GIS information and insight you need to better maintain your community's infrastructure and bring more efficiencies to common day-to-day operations.

[Register for the Next Webinar](#)

Share:



Transportation Funding Alert

The Multimodal Projects Discretionary Grant is available for cities, towns, and villages whose transportation projects will consider improving equity, resiliency, and economic impact, among other factors. Explore Esri's transportation funding resource site to see how you can use GIS to achieve the objectives behind this funding opportunity.

Application deadline is May 23, 2022.

[Learn More](#)



Race Is On to Remove Lead Pipes from Under the US

New federal rules aimed at ridding US drinking water of lead contamination have cities and states looking to GIS to inventory and prioritize lead service lines. See how Benton Harbor, Michigan, and Denver's municipal water agency are using ArcGIS to streamline the replacement of lead service lines.

[Read More](#)



Bridging the Digital Divide in Ohio with GIS

The State of Ohio and its leadership use GIS technology to increase insight into local communities' internet needs and develop a comprehensive broadband strategy. This is a prime example of how GIS can provide data analysis and visualizations that are essential to closing the digital divide.

[Check It Out →](#)



Broadband Funding Resource Site

The latest available funding provides governments with a significant opportunity to expand much-needed broadband service to rural, underserved, and disadvantaged communities. See how you can apply GIS to your broadband expansion efforts using federal funding.

[Visit Page →](#)

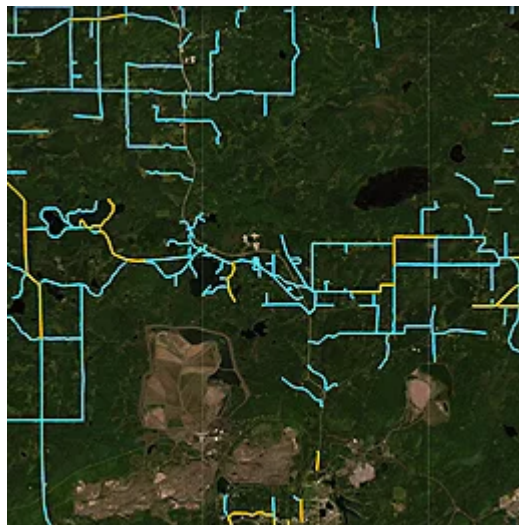
Register for **THE NEXT PUBLIC WORKS** WEBINAR

May 18, 2022 | 11:00 AM (EDT)



Saint Louis County, Minnesota, Saves over \$200,000 in Keeping Roads Clean with GIS

Saint Louis County, in northern Minnesota, manages an estimated 2,000 miles of roadways and relies on volunteer organizations to assist in the roadways' maintenance. The county turned to a GIS solution that saved the county over \$200,000 in annual labor costs.



[Learn More →](#)

Reno—The Biggest Little City in the World



Utilizing Coronavirus Aid, Relief, and Economic Security (CARES) Act funds, the City of Reno has expanded its use of GIS in all departments by adopting an enterprise approach.

[Read the Article →](#)

StoryMaps

Complimentary one-year Premium access to StoryMaps

Create and share beautiful stories with interactive maps, media, and more.

[Get started](#)

[Esri.com](#) | [Privacy](#) | [Contact Us](#)

Copyright © 2022 Esri. All rights reserved.

Esri, 380 New York Street, Redlands, CA 92373, USA.

