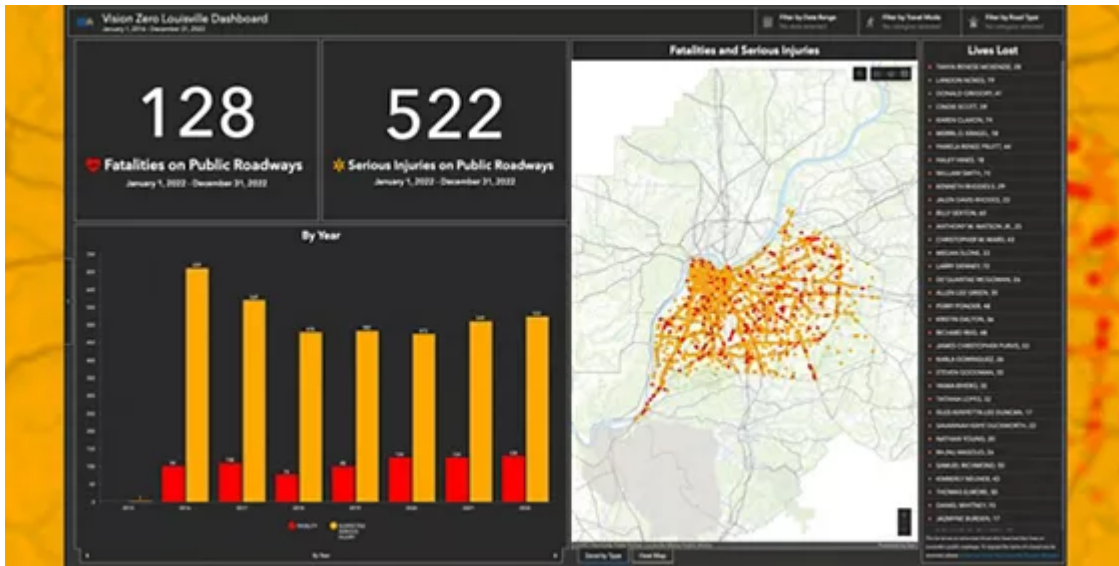




Esri Public Works & Engineering eBrief



A City's Approach to Vision Zero Secures \$21 Million in Funding

Transportation planners and engineers in Louisville, Kentucky, prioritized roadway safety improvement projects by identifying high-risk corridors and vulnerabilities in communities.

[Learn More](#)



New Roadway Management Solution

Deliver better inventory and characterization of public roads, conduct routine pavement condition assessments, and streamline inspection and maintenance activities.

[See the Solution](#)



Right-of-Way Management: Preparing for Infrastructure Expansion

Organizations must rethink the use and management of rights-of-way (ROW) as they prepare for the next generation of infrastructure.

[Get Report](#)



More News in Public Works



[Webinar—Drones in Public Works](#)



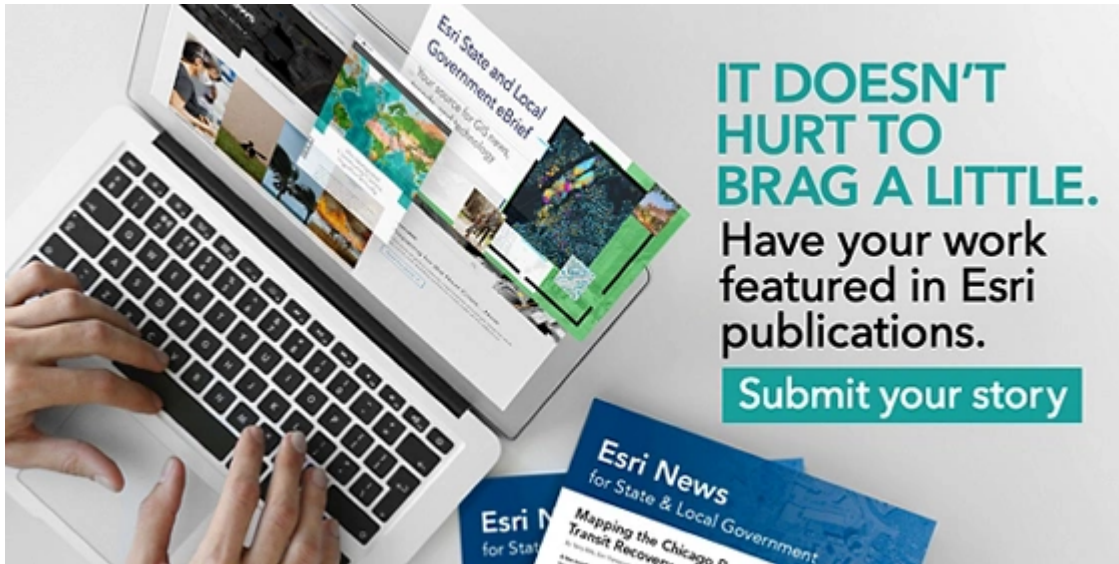
[Get Started with ArcGIS Indoors](#)

This is your last chance to sign up for Esri's webinar on April 27. See how you can leverage drones to support and streamline your workflows and tasks.

[Register Now](#)

It's Facilities & Grounds month for APWA and Esri has a complimentary lesson for you to learn how to map indoor locations and assets within buildings.

[Start Web Course](#)



Not Finding the Content Valuable in the Public Works eBrief?

Send us an [email](#) on how we can improve, or leave us immediately by unsubscribing [here](#).

[Privacy](#) | [Contact Us](#) | [About Us](#)

Copyright © 2023 Esri. All rights reserved.

Esri, 380 New York Street, Redlands, CA 92373, USA.

