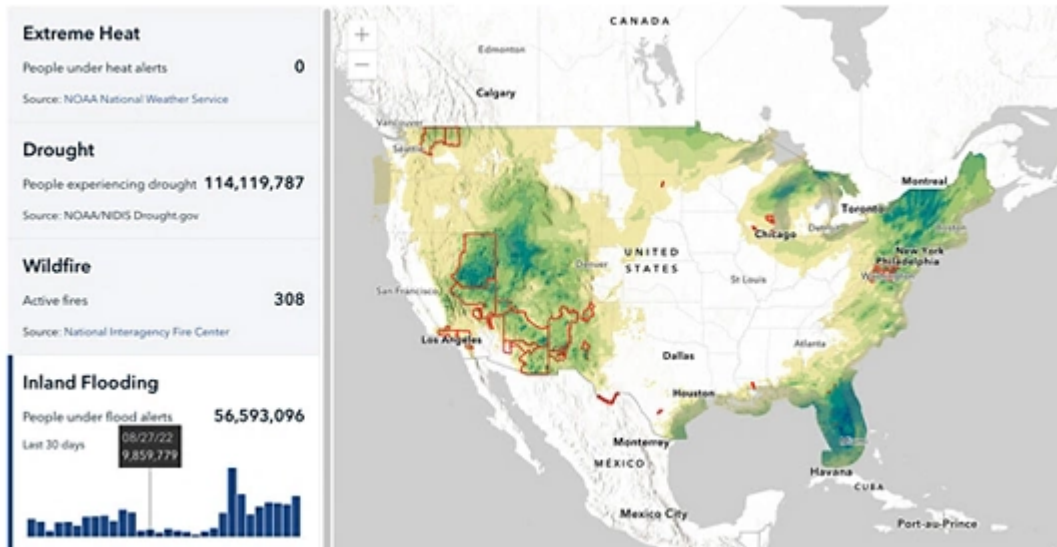




Esri Public Works & Engineering eBrief



Communities Can Find Climate Data, Funding Sources in New White House Portal

Esri collaborated with the Biden-Harris administration to create the Climate Mapping for Resilience and Adaptation (CMRA) portal to help state and local governments solve complex issues related to climate change.

[Learn More](#)



Vision Zero Prince George's Road Map to Preventing Traffic Fatalities

Vision Zero Prince George's is a countywide strategy to eliminate serious traffic-related injuries and fatalities by 2040. Built on Esri's ArcGIS Hub, the aim of the public site is to create simpler and more transparent maps and resources to benefit and enhance community engagement with the county's Vision Zero strategy.

[Read the Blog](#)



Extracting Road Obstructions, Flooding, and Damage with Artificial Intelligence

Here's a walk-through of how government agencies can leverage drone-based imagery and artificial intelligence to improve their disaster response. This can accelerate the speed at which community leaders make decisions that may otherwise take days.

[Explore Interactive Map](#)



More News in Public Works



Coastal City Amplifies GIS to Better Manage Water Quality Assets

The City of Carlsbad's GIS-based asset management platform allows city staff members to visualize the city's postconstruction best management practices (BMPs) as an integrated network while measuring program effectiveness.

[Read the Article](#)



Interactive Map Helps Residents Navigate \$193 Million Plan for Bismarck Infrastructure Improvements

Bismarck's Public Works Utility Operations Department used ArcGIS StoryMaps to inform residents of how infrastructure improvements across the city are being prioritized over the next 10 years.

[Watch the Video](#)



Sussex County-DeIDOT Permit Tracker



Building Out the Nation's EV Charging Network

The Sussex County-DeIDOT Permit Tracker allows the county and the Delaware Department of Transportation—and anyone else using the public product—to view real-time information on projects, specifically agreements for triggering road improvements based on the number of building permits issued for new housing.

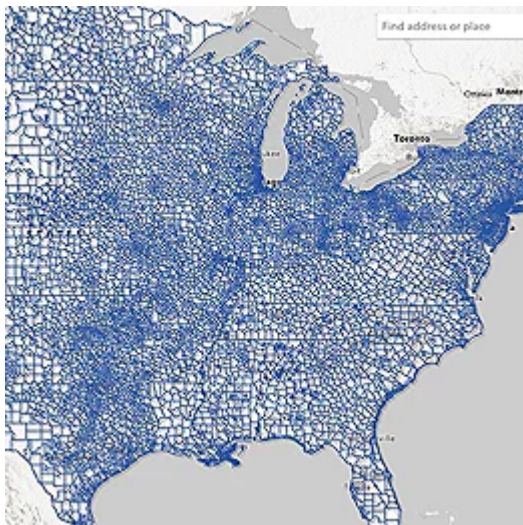
[Watch the Video](#)

The US Departments of Transportation and Energy have made \$5 billion available under the new National Electric Vehicle Infrastructure (NEVI) Formula Program to build out a national electric vehicle charging network.

[See the Interactive Map](#)

Explore the Latest Public Policy Resources

School Districts and Socioeconomic Information Sidebar Application



This application explores school district socioeconomic characteristics throughout the United States, like the number of public and private schools, school enrollment figures, disconnected youth within a district, children living below the poverty level, and children with no internet at home.

[Visit the Application](#)

Inflation Is Coming. What's a GIS Analyst to Do?

Understand inflation when mapping median household income, home value, and other attributes with monetary values.

Learn More



Achieve your mission with GIS software.

Apply for Esri's Small Nonprofit Organization Grant Initiative



[Privacy](#) | [Contact Us](#) | [About Us](#)

Copyright © 2022 Esri. All rights reserved.

Esri, 380 New York Street, Redlands, CA 92373, USA.

