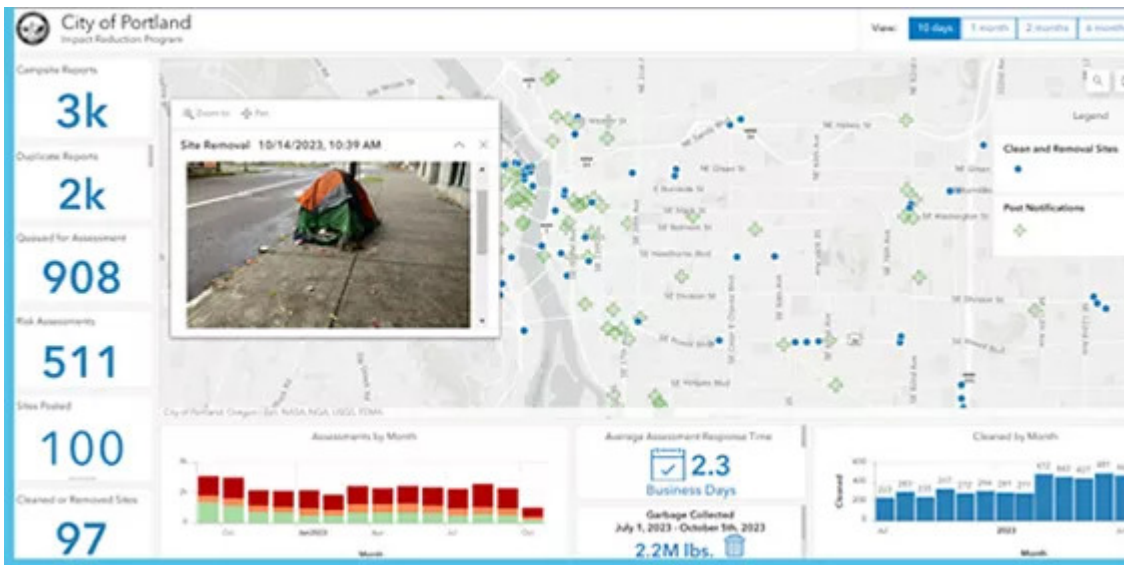


Public Works and Engineering e-Brief

Featured Story



Portland's Mission to Reduce Impact of Urban Campsites

The City of Portland, Oregon, coordinates multiple entities to combat a complex human crisis.

[Read More →](#)

Tip of the Month



The new Streetlight Management Solution delivers a set of capabilities that help conduct routine inspections and preventative maintenance tasks.

[Get More Insight →](#)



Esri State and Local Newsletter



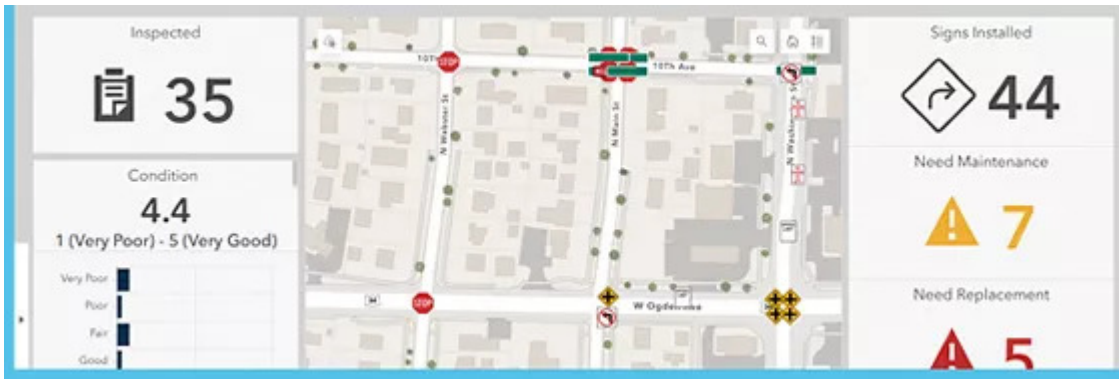
Winter Edition of State and Local Newsletter Now Available

This issue features stories on how Douglas County uses GeoAI to identify ADA curb compliancy, ArcGIS Urban's solution for affordable housing developments in North Carolina, and much more!

[Access Now →](#)



Blog



Sign Management Solution Released

Properly maintained road signs save lives, prevent injuries, and improve traffic flow.

[Learn More →](#)

Quote of the Month



"We went from pen and paper that took days to get the job done to real-time repair that helped us cut down on an unquantifiable amount of cost and time."

Josephine Rudd, GIS Manager, Solid Waste Authority

More Content You'll Love

New Pretrained AI Models Are Everywhere



Esri has doubled from 30 to nearly 70 pretrained artificial Intelligence models.

Read More →



[Privacy](#) | [Contact Us](#) | [About Us](#)

Copyright © 2024 Esri. All rights reserved.

Esri, 380 New York Street, Redlands, CA 92373, USA.

