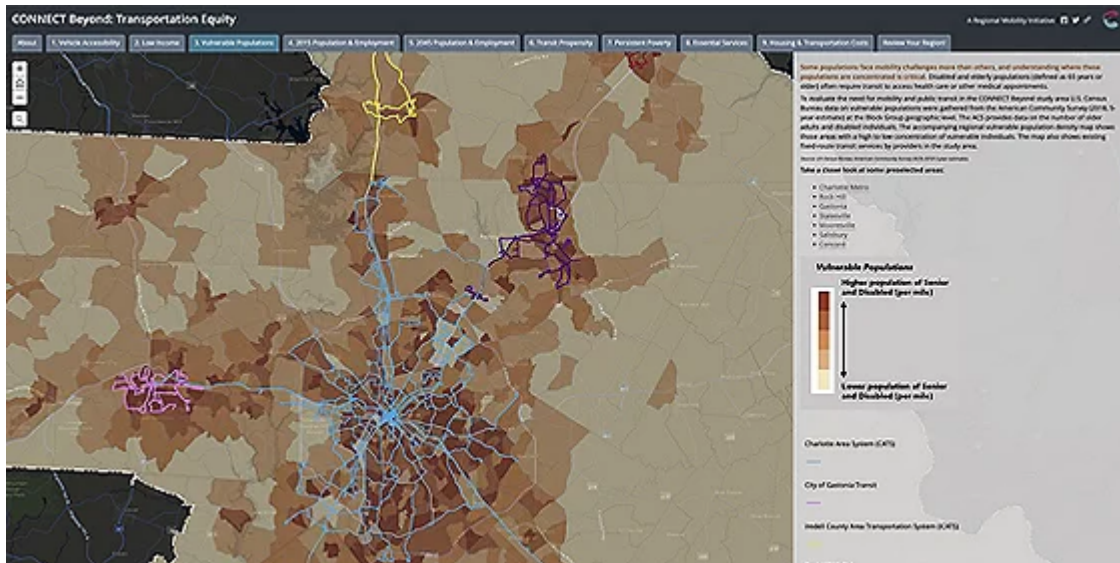




Esri Transportation eBrief



Driving toward Equity in Addressing Community Mobility

With a strong focus on creating a more equitable and connected transportation system, Centralina Regional Council has created a GIS-based planning portal containing a wealth of data and analysis, all designed to help transportation and land-use planners address equity issues in their communities.

[Read the Article](#)

Share:



Florida Department of Transportation Keeps GIS at the Forefront

The mission of the Florida Department of Transportation (FDOT) is to provide a safe transportation system that ensures the mobility of people and goods, enhances economic prosperity, and preserves the quality of its environment and communities.

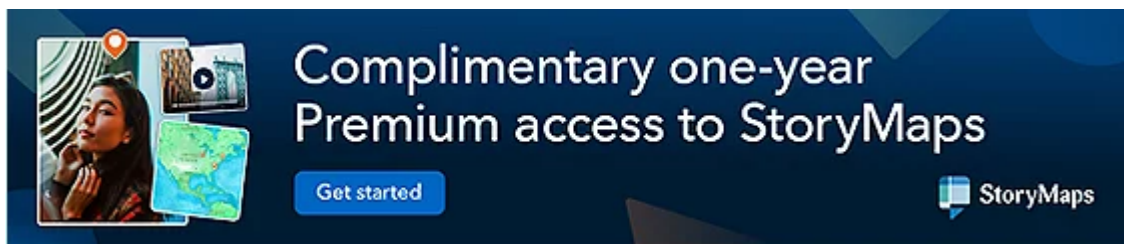
[Learn How FDOT Supports That Vision](#)



Leveraging GIS Solutions for a Powerful Approach to Snow Events

The Cobb County Department of Transportation (DOT) uses a dashboard that pulls automated vehicle location (AVL) tracking information through ArcGIS GeoEvent Server, providing real-time updates on which roads have been cleared during snow events.

[Read the Article](#)



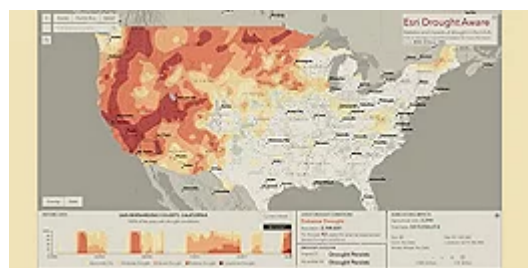
Complimentary one-year Premium access to StoryMaps

Get started

StoryMaps

The banner features a woman looking at a tablet displaying a map, with a 'Get started' button and the StoryMaps logo.

Explore the Latest Public Policy Resources



Justice40 Tracts Now Available in ArcGIS Living Atlas of the World

The latest Justice40 Census Tracts data from the Council on Environmental Quality (CEQ) shows areas identified as disadvantaged across eight different categories. Use this layer to help plan for grant applications, perform spatial analysis, and create informative dashboards and web applications.

[Explore the Data](#)

Track US Drought Conditions with Drought Aware Tracker Application

Leveraging data and information made available to the GIS community from the National Oceanic and Atmospheric Administration (NOAA), the US Department of Agriculture, and the US Census Bureau, Esri has released an update to its long-lived Drought Tracker application.

[Explore the App](#)

See Other Inspiring Stories



Identifying the Solar Panel Array Siting Potential Next to America's Highways

The Ray, which promotes the use of rights-of-way (ROW) land for solar panel arrays, estimates that many states have enough federal interstate freeway ROW land to support thousands of acres of solar arrays.

[Read More Now](#)



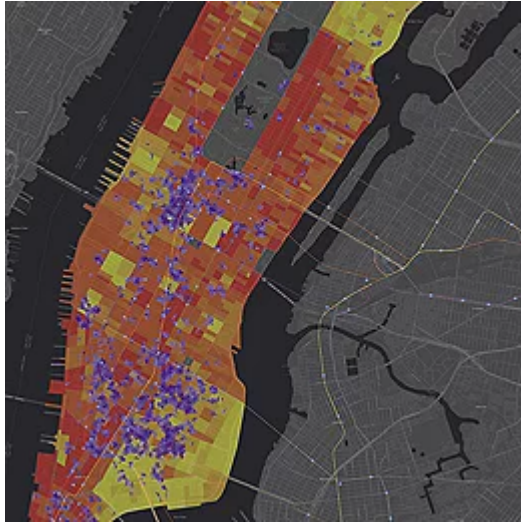
Achieving Excellence through an Enterprise Approach

Michael Liddle, GIS program director at Fairfax County, Virginia, presents his enterprise vision for the county's use of GIS at the 2022 Esri Public Sector CIO Summit. Fairfax County's strategic investment and plan led to massive GIS adoption across departments as well as executive engagement. Liddle was also recognized as the recipient of the inaugural Enterprise Approach to GIS Award for his leadership in establishing GIS as a foundational, critical infrastructure across the county.

[Watch the Video](#)

Don't Miss the Transportation Activities at Esri User Conference

Trends in Transportation: How GIS Mobilizes a Nation



GIS technology can transform your organization into a spatial data- and performance-driven agency. Discover industry-leading use cases of GIS at this session to better plan, manage, and maintain your transportation systems.

[Get More Information →](#)

Making the Most Strategic Infrastructure Investment Decisions with GIS

Understand how GIS can answer the following questions: How do we rebuild the infrastructure we need in order to lay the foundation for future growth? How do we rethink our infrastructure and the delivery of mobility services that are equitable and make cities more livable? How do we reimagine infrastructure that better connects people, provides economic opportunity, and leverages new technologies?



[Explore More Now →](#)

Is your information up to date?

[Update Your Info](#)



[Privacy](#) | [Contact Us](#) | [About Us](#)

Copyright © 2022 Esri. All rights reserved.

Esri, 380 New York Street, Redlands, CA 92373, USA.

