



ArcGIS[®] Earth

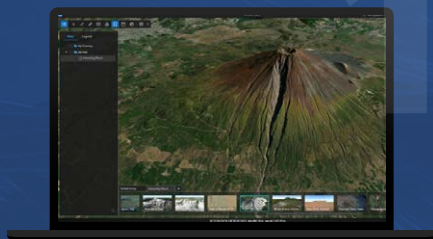
Explore your environment in 3D



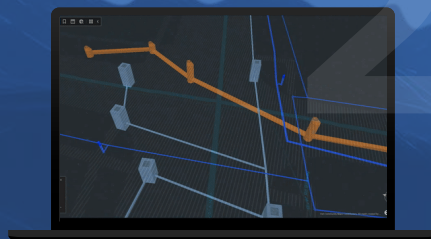
ArcGIS[®] Earth is a free application designed for visualizing and exploring geospatial content in 3D on desktop and mobile devices. Collaborate and plan with stakeholders on an interactive 3D globe, both online and offline, to gain situational awareness. ArcGIS Earth supports a wide array of data formats and services, including KML, scene layers, 3D tiles, map packages, tile packages, and Open Geospatial Consortium (OGC) web services.

Powered by intuitive and multidimensional insights, ArcGIS Earth enables users to monitor operations in 3D, quickly sense and comprehend an environment, and improve decision-making.

How it works



Explore anywhere
on the globe



Interact in 3D



Sketch, annotate,
and measure



Style with symbology
and labels



Communicate and share



What are the benefits of ArcGIS Earth?



3D-first design

Visualize your data or explore ArcGIS Living Atlas of the World on an interactive 3D globe. Utilize exploratory analysis tools to conduct measurements, create an elevation profile, and conduct an interactive line of sight and viewshed analysis to inform operations.



Works in any environment

Access critical data online and offline. ArcGIS Earth supports network-resilient and adaptable workflows for use in the office or on-site. Inform and validate decisions with 3D exploratory analysis tools across desktop and mobile devices.



Gain multidimensional insight

ArcGIS Earth extends capabilities beyond traditional two-dimensional workflows. As the volume and velocity of data continues to increase exponentially, our ability to intuitively interpret data becomes a challenge.

Create, edit, and share



ArcGIS Earth enables all users to work with KML, KMZ, and KML network links in their entirety. Regardless of user type or connectivity, users can create, edit, and share KML with the latest OGC specifications.

Highly customizable experience



Use the configuration file to customize the ArcGIS Earth user experience. These settings can be applied for an individual user or applied throughout an entire organization.



Visualize, analyze, and share data across devices and environments

ArcGIS Earth mobile extends the capabilities of the desktop version. Browse geospatial content to visualize data on a 3D globe, see 3D data in augmented reality (AR), collect and share GPS tracks, and perform 3D analysis.

Download ArcGIS Earth for desktop and mobile for free.

What types of data can ArcGIS Earth consume?

Local files—Shapefile, KML and KMZ files, TXT and CSV files, mobile scene package, GPX, GeoJSON, tile package, scene layer package (*point scene layer, point cloud scene layer, 3D object, integrated mesh*), mobile map package, geopackage, vector tile package, raster file, 3D model, 3D tiles.

Services—ArcGIS Server web services (*map service, image service, feature service, scene service, vector tile service*), web scene, web map, OGC Web Map Service (WMS), OGC Web Map Tile Service (WMTS), OGC Web Feature Service (WFS), URL to a KML or KMZ service or file, path to the local file location.

FOR MORE INFORMATION

Visit go.esri.com/earth to get more information, connect with the sales team, and ask questions.

Copyright © 2024 Esri. All rights reserved. Esri, the Esri globe logo, The Science of Where, ArcGIS, and esri.com are trademarks, service marks, or registered marks of Esri in the United States, the European Community, or certain other jurisdictions. Other companies and products or services mentioned herein may be trademarks, service marks, or registered marks of their respective mark owners.

g5605269 ESRI2C10/24cw



esri

THE
SCIENCE
OF
WHERE®