



# ArcGIS<sup>®</sup> Hub<sup>SM</sup>

Transform how you share data, collaborate, and engage with your community.



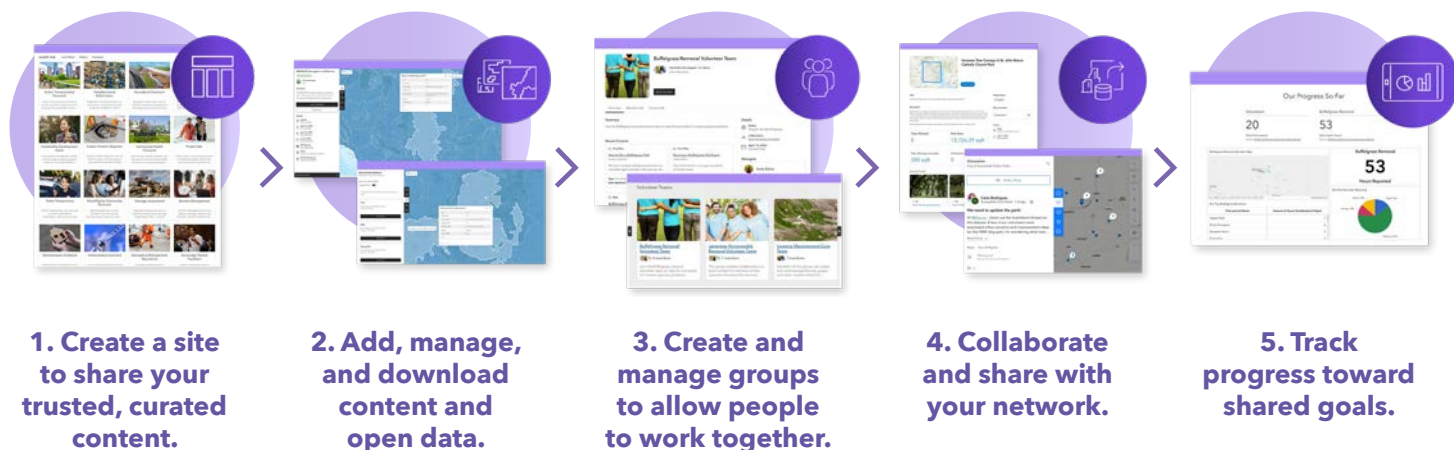
## What Is ArcGIS Hub?

We believe that communities are better when they work together. ArcGIS<sup>®</sup> Hub<sup>SM</sup> is a cloud-based data sharing, collaboration, and engagement platform that empowers individuals, organizations, and communities of practice to share trusted, curated content. Organizations of all types and sizes use Hub, including government agencies; nonprofit groups; architectural, engineering, and construction (AEC) firms; commercial entities; and academic institutions. Hub leverages the power of geographic science and technology to help organizations improve communication, collaborate more deeply with internal and external stakeholders, and work more effectively with their communities.

## What can you do with ArcGIS Hub?

- Create unlimited sites that showcase your content with little or no coding.
- Deploy ready-made templates to jump-start and scale up your work.
- Publish open data to improve transparency and trust.
- Leverage built-in engagement tools to encourage meaningful public
- Participate with and gather feedback from hard-to-reach communities.
- Use the Hub collaboration framework to build capacity and organize efforts around defined goals, projects, and initiatives.

## How It Works





# Benefits of ArcGIS Hub

- **Save time and money**  
ArcGIS Hub is built on top of ArcGIS Online, where your authoritative content already resides. Utilize your existing content and leverage built-in software capabilities to reduce costs and increase the value of your geographic information system (GIS) investment. Also, optimize your use of limited resources by encouraging volunteers and trusted members of the community—a virtual extension of your workforce—to provide you with data and content that would be otherwise difficult or costly to collect.
- **Improve transparency through open data**  
By sharing authoritative data through ArcGIS Hub, you can reduce one-off requests for data and maps while improving transparency in your communities.
- **Make your work easier to share and discover**  
Using Hub, you can create hub sites that showcase your work and make it easier to find. These engaging websites don't require coding and can incorporate your brand, logos, and visual style to match your existing web properties.
- **Form stronger relationships and build trust with the community**  
With ArcGIS Hub Premium, you can add trusted members of the public to groups and then coordinate the activities of those groups to collect data, record observations, and gain key information. This helps you prioritize policies and actions to generate better outcomes, deepening your relationship with the community.
- **Inspire engagement and action**  
Use built-in engagement and collaboration tools to create a network of stakeholders who are invested in shared initiatives. By leveraging discussion and event features, you can establish sustained communication that drives collective progress toward common goals.

## FOR MORE INFORMATION

Visit [go.esri.com/arcgis-hub](https://go.esri.com/arcgis-hub) to get more information, connect with the sales team, and ask questions.



Copyright © 2025 Esri. All rights reserved. Esri, the Esri Globe and Frame logos, ArcGIS, The Science of Where, Hub, and esri.com are trademarks, service marks, or registered marks of Esri in the United States, the European Community, or certain other jurisdictions. Other companies and products or services mentioned herein may be trademarks, service marks, or registered marks of their respective mark owners.

G4144963

