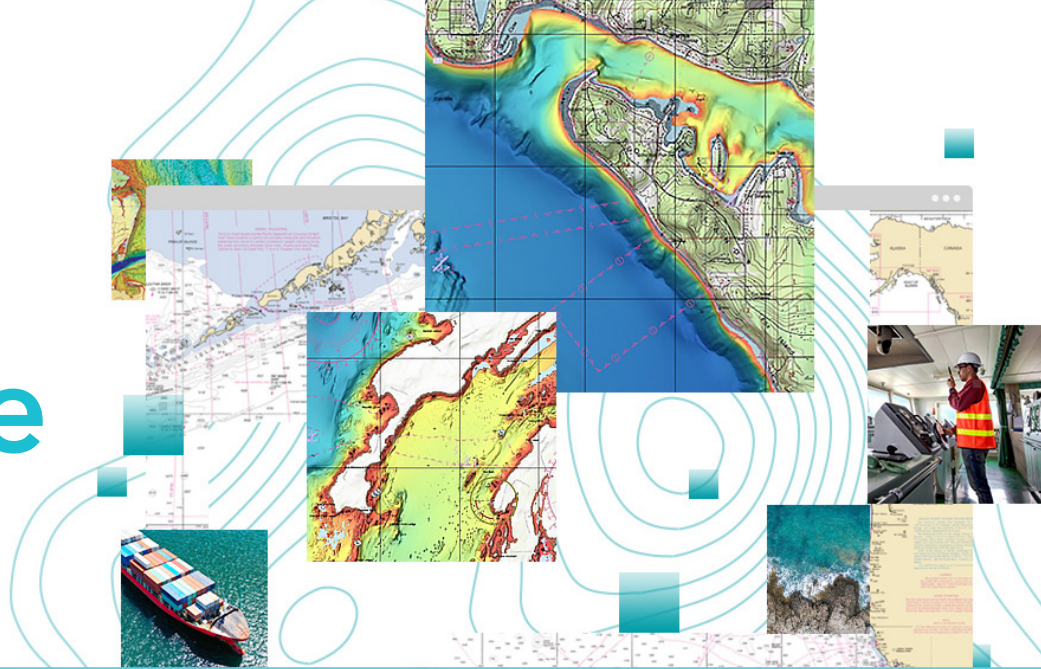




# ArcGIS<sup>®</sup> Maritime

Beyond Navigational Charts

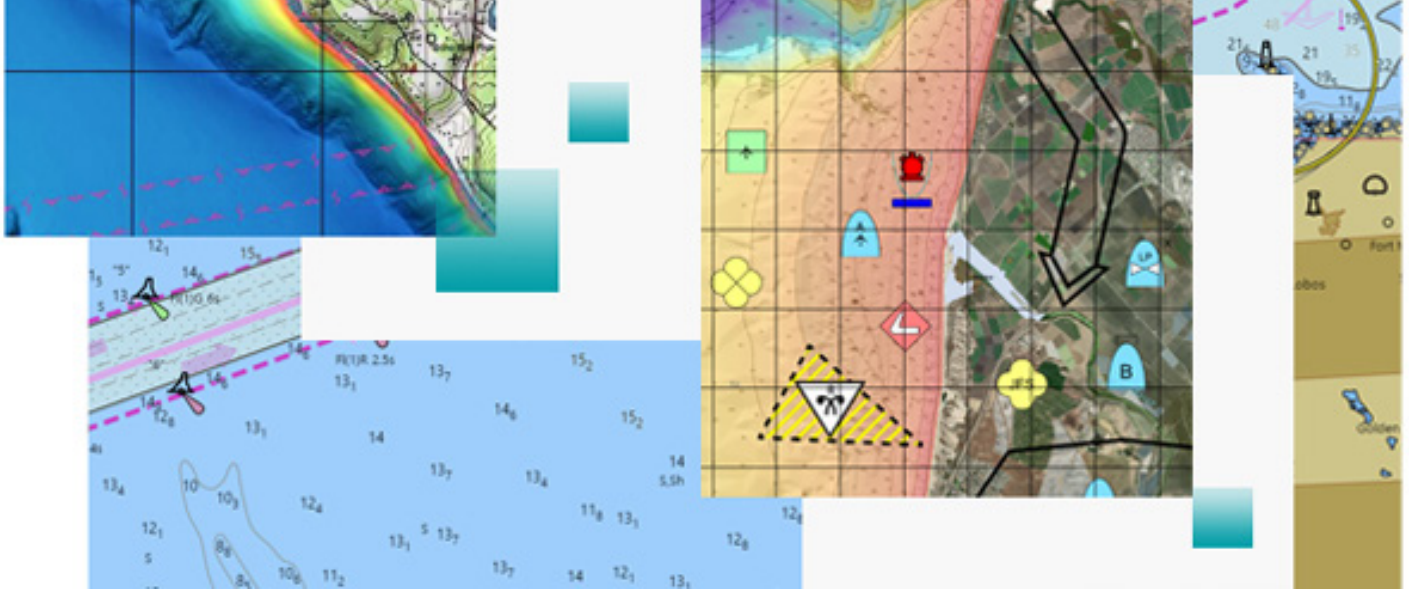


## What Is ArcGIS Maritime?

ArcGIS<sup>®</sup> Maritime supports a wide variety of International Hydrographic Organization (IHO) S-57 and S-100 product specifications—like ENC, Inland ENC, AML, S-58, S-4, S-63, and DNC—in both ArcGIS Pro and ArcGIS Enterprise. Modernize your production and maintain S-57, S-100, and S-4 standards-compliant nautical products faster by automating entire workflows using scriptable production tools in ArcGIS Pro. While in ArcGIS Enterprise, electronic charts published as web services support shore-based mission planning, situational awareness, and generation of paper charts as geographic (georeferenced) PDFs directly from those web services.

## How It Works

- **Manage**  
Magnify the value of your maritime data by using simple tools to ingest S-57 and S-100 electronic chart specifications.
- **Produce**  
Automate the production of industry-standard products using geoprocessing tools.
- **Share**  
Publish electronic charts as web services for use in various applications.



## Benefits of ArcGIS Maritime

- **Automate production**—Adopt a data-first strategy to prevent duplicated efforts for electronic and paper charts production. Save money by automating the management, creation, and validation of S-57 and S-100 products.
- **Unlock the power of your data**—S-57 and S-100 products contain authoritative geospatial information that can be shared as web services for situational awareness, survey planning, coastline analysis, and engineering.
- **Ensure compliance**—Validate S-57 datasets using the latest IHO S-58 validation standards as well as third-party tools.
- **Make informed decisions**—Use maritime data in a common operating picture to support monitoring of vessel traffic, defense and port operations, oil and gas exploration, and ocean sciences.
- **Extend your team**—Securely share data with subcontractors when working in a disconnected environment and easily integrate the results of their work.
- **Use Maritime Chart Service**—Seamlessly display nautical charts online by publishing authoritative S-57 and S-63 datasets via REST- and OGC-WMS-compliant web services.
- **Deploy a Custom Chart Builder**—Use Maritime Chart Service web services to generate custom information products on the fly, at any scale, to support operations and mission planning, or create traditional paper chart products at fixed size and scale.

## FOR MORE INFORMATION

Email [maritime@esri.com](mailto:maritime@esri.com) for more information on how ArcGIS Maritime could benefit your organization.



Copyright © 2022 Esri. All rights reserved. Esri, the Esri globe logo, ArcGIS, The Science of Where, @esri.com, and esri.com are trademarks, service marks, or registered marks of Esri in the United States, the European Community, or certain other jurisdictions. Other companies and products or services mentioned herein may be trademarks, service marks, or registered marks of their respective mark owners.

