

Mapping the Future of BIM and GIS, Together with Autodesk

ArcGIS® Basemaps and ArcGIS Living Atlas of the World—
Esri Provides Authoritative Mapping Capabilities in Autodesk Software

ArcGIS Basemaps

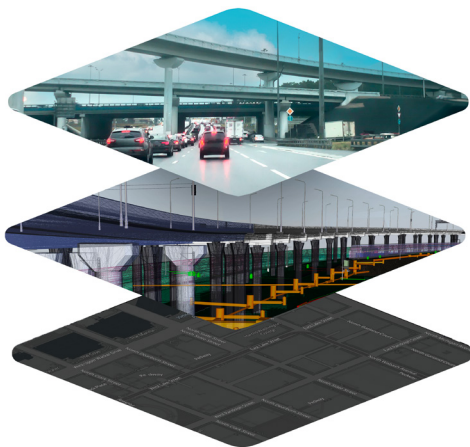
ArcGIS® Basemaps is a suite of high-quality, up-to-date reference maps that serves as the geographic foundation for design. With various ready-to-use styles and imagery types to choose from, these Esri-designed basemaps are available at multiple scales and in more than 40 languages.

ArcGIS Living Atlas of the World

Enhance design and engineering projects with real-world conditions by tapping into the foremost collection of dynamic and authoritative geospatial content. ArcGIS Living Atlas of the World enriches CAD and BIM with location intelligence by offering regularly updated map layers: 3D terrain, soils, boundaries, and much more.

Esri Provides Authoritative Mapping Capabilities in Autodesk Products

ArcGIS Basemaps is now available and curated layers from ArcGIS Living Atlas are coming soon to users of Autodesk software. This further integration of BIM and geographic information system (GIS) technology is helping accelerate digital transformation and boost efficiency across project life cycles.



Esri and Autodesk have simplified connected and collaborative workflows through cloud-to-cloud integrations with ArcGIS Online, ArcGIS GeoBIMSM, and Autodesk Construction Cloud. As the provider of Autodesk's mapping platform of choice, Esri is enhancing Autodesk workflows with authoritative, living maps to enable architecture, engineering, and construction (AEC) professionals to deliver projects more efficiently and sustainably.

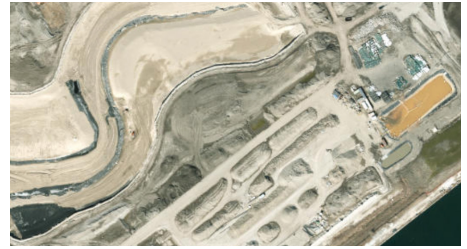
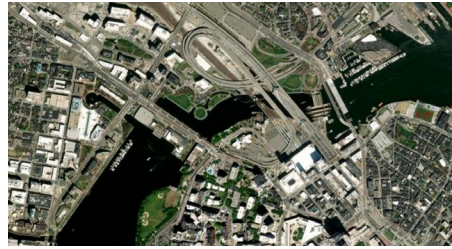
What Will ArcGIS Basemaps and ArcGIS Living Atlas Help You Do?

- Enrich CAD and BIM with real-world context by using basemaps as the foundation of your designs.
- Add essential details to your work: topology, soils, imagery, street information, and more.
- Access a curated repository of living, authoritative geospatial content.
- Improve decisions and project planning using dynamic, trusted, and globally sourced map layers.

ArcGIS Basemaps

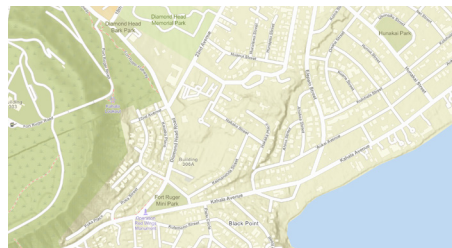
High-Resolution World Imagery

Bring real-world detail to your CAD and BIM projects by adding high-quality satellite and aerial imagery. ArcGIS Basemaps is updated monthly with imagery that scales from 15 meters down to 1:280 resolution in select communities all around the globe.



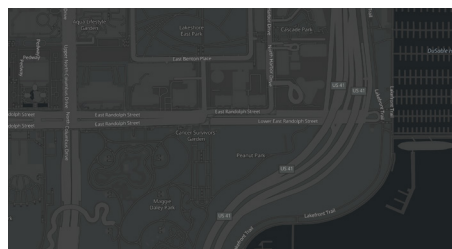
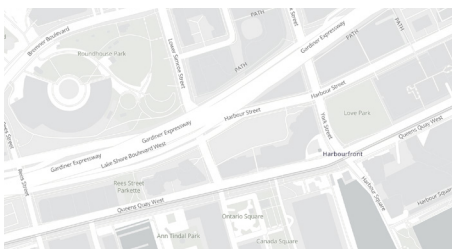
OpenStreetMaps

Enrich your designs with 3D relief, hillshade, and up-to-date street information in over 40 languages. OpenStreetMap is an open-source project to create an editable map of the world, built by a global community of mappers who contribute and maintain geographic data about roads, buildings, trails, boundaries, and much more.



Light and Dark Gray Basemap Styles

Make your designs stand out on top of classic, monochrome styles. ArcGIS Basemaps is a collection of reliable and regularly updated reference maps that you can trust.



Experience Esri's Maps For Yourself



Scan the QR Code or visit go.esri.com/discoverbasemaps to take a closer, interactive look at our most popular basemaps.

For More Information

Go to go.esri.com/autodeskmaps to learn more about how Esri and Autodesk are partnering to empower AEC professionals with the best of GIS.

