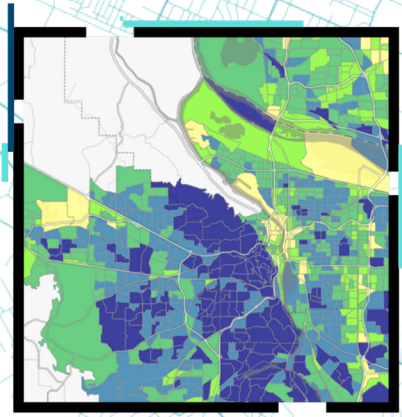




# GIS for Nonprofit Organizations

Esri Extends Special Pricing on Software, Content, and Resources to Support Your Mission



## Esri® Technology Is Used by Nonprofits Worldwide

Esri is the global leader in geographic information system (GIS) technology. Since 1969, Esri has helped organizations of all sizes unlock the full potential of data to remain agile, improve services, and meet new challenges. Today, Esri® software is deployed in hundreds of thousands of organizations globally, including Fortune 500 companies, government agencies, universities, and more than 15,000 nonprofit institutions.

Our users address the biggest challenges our planet faces, from climate change to food production and from providing humanitarian relief to making communities better places to live. In business, our users optimize resource allocation, measure the impact of program performance, and are enabled to better address the needs of those they serve.

## Geospatial Technology to Improve Your Operations

GIS is technology that creates, manages, analyzes, and maps all types of data. GIS connects data to a map, integrating location data (where things are) with all types of descriptive information (what things are like there). This provides a foundation for mapping and analysis that is used in almost every industry. GIS helps users understand patterns, relationships, and geographic context. Esri is committed to promoting GIS as software that supports spatial thinking.

Esri is the world's largest mapping technology company. We build ArcGIS® software, the world's most powerful mapping and spatial analytics software for desktop, software as a service, and enterprise applications. Our software, data, training, and consulting services help deliver location intelligence and meet the digital transformation needs for organizations of all sizes. We support nonprofit organizations around the globe—humanitarian, social welfare, conservation, health, and faith-based agencies; professional associations; charitable foundations; and more. The ArcGIS system provides products, solutions, and applications for spatial analysis and data science, field operations, fundraising, volunteer management, facilities, remote sensing, real-time visualization and analytics, and data collection and management.

GIS is technology that creates, manages, analyzes, and maps all types of data.

## Understanding the Esri Nonprofit Program

The Esri Nonprofit Program provides nonprofit organizations with low-cost access to GIS software, training, content, and other resources. This special program helps thousands of nonprofits—large and small—advance their mission, achieve measurable impact, engage with communities, and advocate for their cause.

## Two Paths to Success

### Software Pricing for Nonprofits

Nonprofit organizations can license our software products at specially priced rates. These include our core software: ArcGIS Online, ArcGIS Pro, and ArcGIS Enterprise. These products will give your organization key mapping and analytic capabilities that can elevate your operations and increase efficiency.

ArcGIS Online	ArcGIS Pro	ArcGIS Enterprise
\$100, one year	\$100, one year	\$2,000, one year (per 16-core license)

### Organization-Wide Access to GIS

Esri has established a special nonprofit pricing model, referred to as an enterprise agreement (EA). An EA includes core products such as ArcGIS Pro, ArcGIS Online, ArcGIS Enterprise, and ArcGIS Hub<sup>SM</sup> Premium. In addition to core ArcGIS software, EAs include applications that combine demographic, lifestyle, spending, and census data with map-based analytics to support fundraising efforts, along with digital storytelling capabilities, to help convey your mission and impact to the communities you serve. EAs also ensure access to self-paced training resources and dedicated technical assistance.

Enterprise Agreement	Baseline Annual Fee
Tier 1	\$10,000
Tier 2	\$25,000
Tier 3	\$50,000
Tier 4	\$75,000

## Who Is Eligible

The Esri Nonprofit Program is designed to provide any qualified nonprofit organization (NPO) with an affordable way to acquire Esri solutions. Upon submission of the program application, every applicant undergoes a review process, which considers formal tax-exempt status and the mission of the organization. In the United States, this is signified by your 501(c)(3) designation and National Taxonomy of Exempt Entities (NTEE) category. For international applicants, your organization's eligibility and tax-exempt verification will be determined by your local Esri distributor as part of the application process.

While educational organizations with a specific conservation, humanitarian, or community service mission may qualify, we strongly encourage universities and other higher education organizations to explore Esri's GIS programs for education at [esri.com/education](https://esri.com/education).

Additional eligibility guidelines can be reviewed upon applying.

## The Application Process

To get access to the Esri Nonprofit Program pricing, your organization must apply to share its vision for GIS. Members of the Esri nonprofit team are ready to review your organization's eligibility for participation.

Apply today at [esri.com/nonprofit](https://esri.com/nonprofit).

Join more than  
15,000 nonprofits  
that are leveraging  
GIS technology  
to improve their  
operations and  
support their  
missions.

