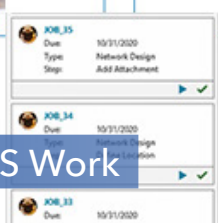




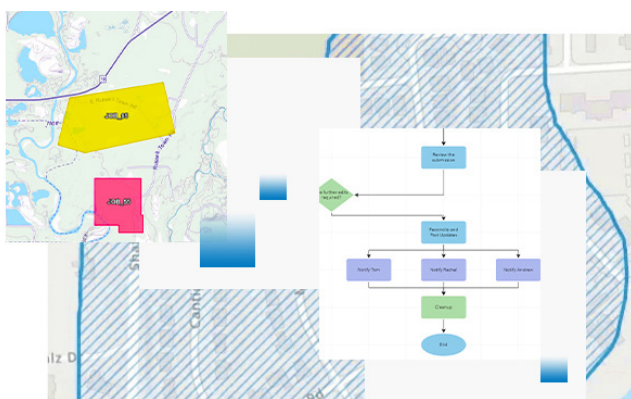
ArcGIS® Workflow Manager

Optimize the Production of Your GIS Work



What is ArcGIS Workflow Manager?

ArcGIS® Workflow Manager is easy-to-use, scalable enterprise geographic information system (GIS) workflow management software that streamlines your production process by automating and simplifying the performance and management of location-enabled work. Reduce costs by improving data quality and accuracy, optimizing resource allocation, enhancing communication, and standardizing and centralizing repeatable work processes.



What industries are supported by Workflow Manager?

ArcGIS Workflow Manager supports many types of workflows across multiple industries.

Submission and approval—Manage business processes such as permitting, inspection, data solicitation, and address-change and incident management for state, local, and federal government; utilities; natural resources; architecture, engineering, and construction (AEC); and more.

Infrastructure mapping and design—Optimize infrastructure and asset management for state and local government agencies, utilities, oil and gas companies, and AEC organizations that use utility network and parcel fabric. Simplify maintaining pipeline, road, and highway linear referenced features via desktop and web-based workflows.

Automated data orchestration—Automate processes with little or no human interaction using geoprocessing tools and scripts as workflow steps. Schedule these workflows to run automatically and route work to appropriate staff. These workflows are common in state, local, and federal governments as well as organizations (such as insurance) with large data processing requirements.

What are the Benefits of ArcGIS Workflow Manager?

- ✓ Automate workflows—Create a dynamic production system with powerful automation tools. Streamline processes such as data ingestion, analysis, and aggregation.
- ✓ Work in real-time across ArcGIS suite—Drive consistent workflows across desktop and web applications. Collaborate and coordinate across teams, platforms, and locations. Monitor work status in real-time to facilitate informed decision-making.

- ✓ Increase reliability and accountability—Standardize and centralize data and project information to ensure consistency, accuracy, and quality of data at all stages of the project. Increase process efficiency and transparency to build accountability and trust between your organization and your customers.
- ✓ Transform the way you work—Capture best practices and configure complex business processes in just a few clicks with a clean, modern user interface (UI). Automate repetitive, manual tasks to help your workforce stay focused on important tasks. Deliver tools, applications, and data without boundaries to get new employees up to speed quickly.
- ✓ Enhance communications—Boost productivity and efficiency, reduce downtime, and help cut operational expenses by using integrated communications tools. Track actions in real-time to quickly communicate progress, resource allocation, and status to stakeholders through reports and dashboards.

What can Users Do with ArcGIS Workflow Manager?

- Synchronize information in real-time and collaborate with a geographically distributed workforce in a performant way.
- Build seamless and repeatable, location-enabled workflows for your business processes by dragging and dropping predefined steps.
- Manage work in a centralized location, track progress, and analyze work history to identify and resolve bottlenecks.
- Easily add third-party web apps to the workflow process on the web and the desktop, with no custom code required.
- Integrate with ArcGIS Pro to reduce manual, repetitive prep work such as opening the correct maps, navigating to the work's location, and opening the appropriate ArcGIS task.
- Automatically manage data versioning on ArcGIS Utility Network or ArcGIS Parcel Fabric. Create a version, repoint data sources in ArcGIS Pro, reconcile and post updates, and clean up version data once work is completed.
- Send version information to integrated web apps as part of your workflows to create web editing or quality control experiences.
- Run geoprocessing services to perform automated actions and use responses to guide decision points.
- Schedule data-intensive processes to run after hours to reduce network load.
- Integrate with ArcGIS Survey123 to use survey data within a workflow—for example, as input to a geoprocessing tool or an email. Use webhooks to create new work in Workflow Manager from Survey123.
- Integrate with ArcGIS Enterprise to bring your maps, apps, data, users, and groups into your desktop and web workflows.
- Build custom scripts with the ArcGIS API for Python as well as apps and widgets with the powerful ArcGIS REST API.

FOR MORE INFORMATION

Visit go.esri.com/arcgisworkflowmanager

to get more information, connect with the sales team, and ask questions.

