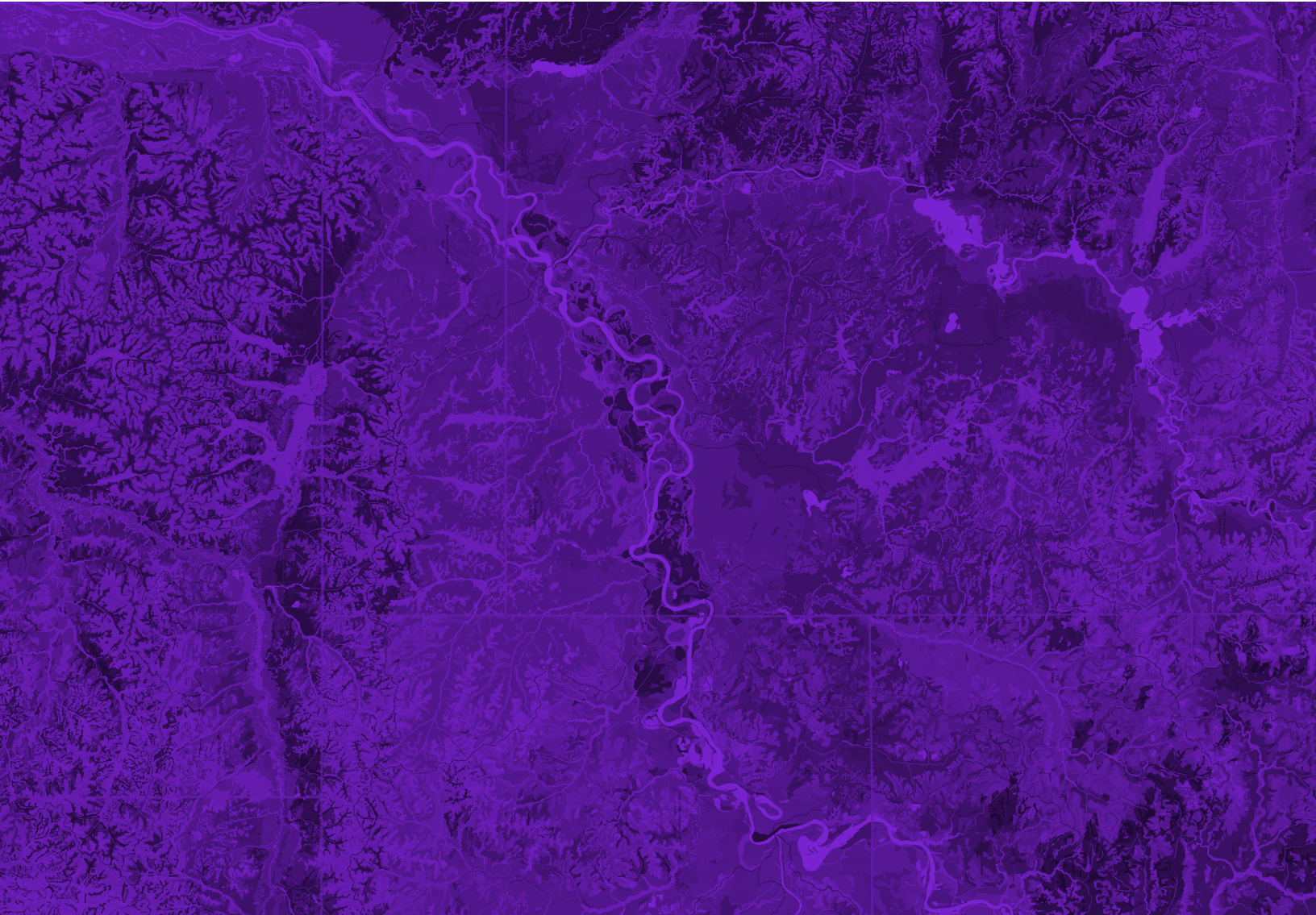




ArcGIS[®] Workflow Manager

Functionality Matrix



What Is ArcGIS® Workflow Manager?

ArcGIS® Workflow Manager is a scalable enterprise workflow management system that optimizes both geographic information system (GIS) and non-GIS operations using maintained, repeatable workflows. Business processes can be automated to increase data quality and accuracy, optimize resource allocation, enhance communication, and improve organization efficiency.

Workflow Manager provides a service-based architecture that is fully integrated with ArcGIS to create and manage workflows across desktop, mobile, and web deployments. There are three main components available for managing work:

Workflow Manager Server

Software that unlocks workflow management tools and services, allowing you to create, maintain, run, integrate, and report on processes and workflows

Workflow Manager Web App

A web-based component used to perform, monitor, and administer work that can be integrated with other ArcGIS services

ArcGIS Workflow Manager Extension for ArcGIS Pro

An optional capability extension to manage work in the ArcGIS Pro desktop app

This functionality matrix outlines features and capabilities available in Workflow Manager to help you identify the requirements, licenses, versions, and capabilities that best fit your organization's needs.

ArcGIS Workflow Manager

Functionality Matrix

11.5

Licensing

Licensing Requirements for ArcGIS Workflow Manager

ArcGIS Workflow Manager offers both server-side and client-side components that have license requirements.

The ArcGIS Workflow Manager capability server includes two levels for server roles, the Standard and Advanced server role options:

Workflow Manager Server Standard Role

The Workflow Manager Server Standard role provides basic Workflow Manager functionality to configure and support semiautomated workflows.

Workflow Manager Server Advanced Role

The Workflow Manager Server Advanced role is an optional add-on to an existing Workflow Manager system. It provides added functionality for automated workflows, such as step scheduling, job scheduling, and creation of jobs using webhooks.

ArcGIS Workflow Manager client-side licensing includes the following:

ArcGIS Pro Extension (optional)

The ArcGIS Workflow Manager extension for ArcGIS Pro allows users to access Workflow Manager jobs within the ArcGIS Pro desktop application. This extension is optimal for users who spend most of their time editing data in ArcGIS Pro.

02

03

04

05

06

07

08

09

10

ArcGIS Workflow Manager

Functionality Matrix

11.5

Deployment

- Workflow Manager Server Standard**
The Standard role provides standard Workflow Manager capabilities to design, configure, and administer workflows.
- Workflow Manager Server Advanced**
In addition to the capabilities in the Standard role, the Advanced role provides functionality to support automated workflows.

Deployment Requirements for ArcGIS Workflow Manager

There are two deployment options available for ArcGIS Workflow Manager: Windows and Linux. You can deploy Workflow Manager on its own machine or on the hosting server machine.

Depending on your deployment type, the following is required:

ArcGIS Enterprise Deployments

Workflow Manager requires a deployment of ArcGIS Enterprise to enable the server capability. Workflow Manager requires ArcGIS Enterprise 10.8.1 or later.

ArcGIS Pro Deployments

The Workflow Manager extension requires a deployment of ArcGIS Pro. Workflow Manager requires ArcGIS Pro 2.7 or later.

Deployment	10.8.1	10.9.1	11.1	11.2	11.3	11.4	11.5
Windows	○	○	○	○	○	○	○
Linux	○	○	○	○	○	○	○

Federation with ArcGIS Enterprise on Kubernetes®	10.8.1	10.9.1	11.1	11.2	11.3	11.4	11.5
Windows				○	○	○	○
Linux				○	○	○	○

ArcGIS Workflow Manager

11.5

Functionality Matrix

Functionality

- Workflow Manager Server Standard**
The Standard role provides standard Workflow Manager capabilities to design, configure, and administer workflows.
- Workflow Manager Server Advanced**
In addition to the capabilities in the Standard role, the Advanced role provides functionality to support automated workflows.

Functionality with Workflow Manager

Workflow Manager provides unique tools and capabilities to help design and configure workflows that support unique business needs.

Functionality	10.8.1	10.9.1	11.1	11.2	11.3	11.4	11.5	
Import/Export Workflow Configuration	Python API	Python API	Python API	○	○	○	○	
Branch Versioning	○	○	○	○	○	○	○	
Data Sources–Feature Services	○	○	○	○	○	○	○	
Create Workflow Item	○	○	○	○	○	○	○	
Upgrade Job	○	○	○	○	○	○	○	
Dynamic Job Properties	○	○	○	○	○	○	○	
Step Help	○	○	○	○	○	○	○	
Multiple Ending Steps	○	○	○	○	○	○	○	
Parallel Processing	○	○	○	○	○	○	○	
Custom Job Name	○	○	○	○	○	○	○	
Job Description	○	○	○	○	○	○	○	
Attachments	○	○	○	○	○	○	○	
Set Step Return Values	○	○	○	○	○	○	○	
Access Geoprocessing Return Values	○	○	○	○	○	○	○	
Configure Path Using Step Return Values	○	○	○	○	○	○	○	02
Autorun Steps When Dependency or Hold Is Released		●	●	●	●	●	●	03
Token Refresh for GP Services and Evaluate Data Quality		●	●	●	●	●	●	04
Custom Status Values		○	○	○	○	○	○	05
Custom Priority Values		○	○	○	○	○	○	06
Upgrade Workflow Item		○	○	○	○	○	○	07
ArcGIS Arcade Expression Evaluator		○	○	○	○	○	○	08
Job Holds		○	○	○	○	○	○	09
								10

ArcGIS Workflow Manager

11.5

Functionality Matrix

Functionality

Workflow Manager Server Standard
The Standard role provides standard Workflow Manager capabilities to design, configure, and administer workflows.

Workflow Manager Server Advanced
In addition to the capabilities in the Standard role, the Advanced role provides functionality to support automated workflows.

Functionality	10.8.1	10.9.1	11.1	11.2	11.3	11.4	11.5
Job Dependencies		○	○	○	○	○	○
Configure Output Values for Web Request Response		●	●	●	●	●	●
Job Commenting		○	○	○	○	○	○
Configure Path Using Arcade Expression		○	○	○	○	○	○
Job Notes		○	○	○	○	○	○
Step Scheduling		●	●	●	●	●	●
Job Scheduling		●	●	●	●	●	●
Email Templates for Job Activities		●	●	○	○	○	○
ArcGIS Survey123 Webhook		●	●	●	●	●	●
User-Defined Settings		○	○	○	○	○	○
Arcade Expression Menu			○	○	○	○	○
Webhooks			●	●	●	●	●
Restrict Edits to AOI/LOI			○	○	○	○	○
Duplicate Shared Searches and Charts			○	○	○	○	○
Web Request Templates for Job Activities			●	●	●	●	●
Optional Item Upgrades			○	○	○	○	○
View Job History			○	○	○	○	○
View Log Messages in the Web App				○	○	○	○
Archive Closed Jobs				○	○	○	○
View the Web App in Dark Mode				○	○	○	○
HSTS Support				○	○	○	○
Custom Basemap Persists					○	○	○
Disconnected ArcGIS Survey123 Support with Reverse Proxy					○	○	○
Batch Job Actions						○	○
Configure Custom Basemaps for Dark and Light Mode							○
Centralized Data References							○
Configure Advanced Settings for the Send Web Request Step							●

02

03

04

05

06

07

08

09

10

ArcGIS Workflow Manager

Functionality Matrix

11.5

Job Management and Functionality

Workflow Manager Server Standard

The Standard role provides standard Workflow Manager capabilities to design, configure, and administer workflows.

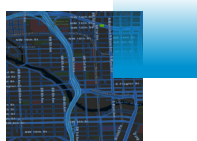
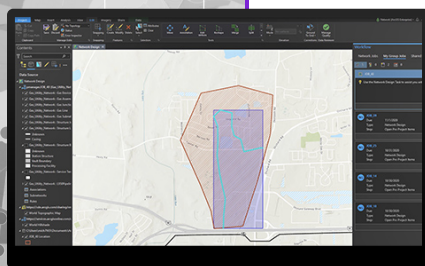
Workflow Manager Server Advanced

In addition to the capabilities in the Standard role, the Advanced role provides functionality to support automated workflows.

Job Management and Functionality in ArcGIS Pro

The ArcGIS Workflow Manager extension for ArcGIS Pro supports desktop users' ability to access and manage jobs in ArcGIS Pro.

Functionality in ArcGIS Pro	2.9	3.1	3.2	3.3	3.4	3.5
Connect to Workflow Items	○	○	○	○	○	○
Access and Run Jobs	○	○	○	○	○	○
View Job Details	○	○	○	○	○	○
Shared Searches	○	○	○	○	○	○
Job Filters	○	○	○	○	○	○
Advanced Sort Capability	○	○	○	○	○	○
Update Job Details	○	○	○	○	○	○
1:1 Extended Properties		○	○	○	○	○
Job Diagram		○	○	○	○	○
Job Commenting		○	○	○	○	○
Attachments		○	○	○	○	○
Notes			○	○	○	○
1:M Extended Properties			○	○	○	○



02
03
04
05
06
07
08
09
10

ArcGIS Workflow Manager

Functionality Matrix

11.5

Workflow

Workflow Manager Server Standard
The Standard role provides standard Workflow Manager capabilities to design, configure, and administer workflows.

Workflow Manager Server Advanced
In addition to the capabilities in the Standard role, the Advanced role provides functionality to support automated workflows.

Workflow Step Templates

Step templates are preconfigured steps designed to perform unique actions and functions when a job is run. Each step template contains default values, step properties, options, and styling that can be customized as necessary.

Step Templates	10.8.1	10.9.1	11.1	11.2	11.3	11.4	11.5	
Define Location	○	○	○	○	○	○	○	
Question	○	○	○	○	○	○	○	
Cleanup	○	○	○	○	○	○	○	
Create Version	○	○	○	○	○	○	○	
Run GP Service	○	○	○	○	○	○	○	
Open Web Page	○	○	○	○	○	○	○	
Send Email	○	○	○	○	○	○	○	
Add Attachments	○	○	○	○	○	○	○	
Open Pro Project Items	○	○	○	○	○	○	○	
Update 1:1 Extended Properties	○	○	○	○	○	○	○	
Manual Step	○	○	○	○	○	○	○	
Start/End	○	○	○	○	○	○	○	
Run Pro GP Tool		○	○	○	○	○	○	02
Evaluate Data Quality		○	○	○	○	○	○	03
Send Web Request		○	○	○	○	○	○	04
Survey123		○	○	○	○	○	○	05
Update 1:M Extended Properties		○	○	○	○	○	○	06
Create Job		○	○	○	○	○	○	07
Add Comment		○	○	○	○	○	○	08
Advanced Assignment			○	○	○	○	○	09
Claim Version			○	○	○	○	○	10
Set Job Version			○	○	○	○	○	
Create Replica				○	○	○	○	
Reconcile and Post				○	○	○	○	

ArcGIS Workflow Manager 11.5

Functionality Matrix

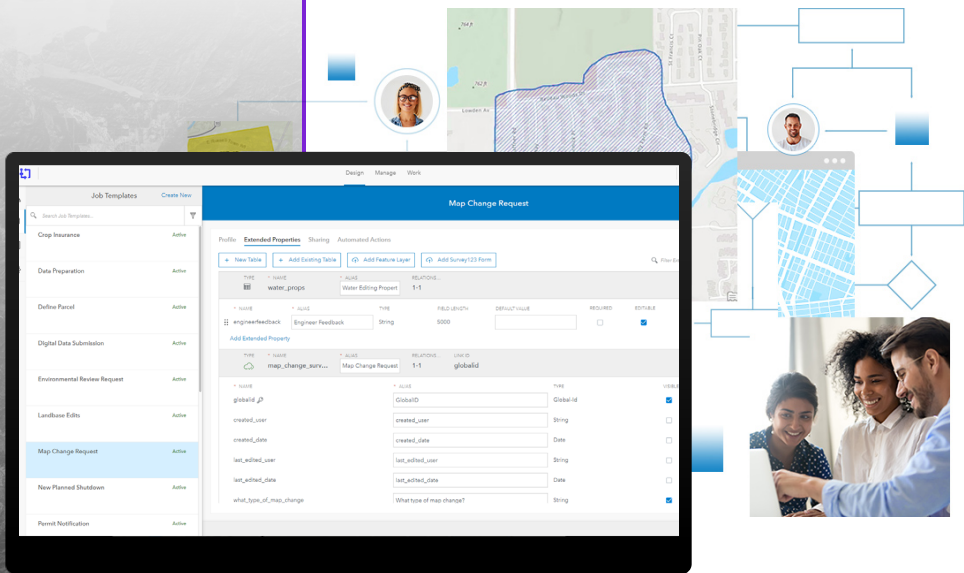
Extended Properties

- Workflow Manager Server Standard**
The Standard role provides standard Workflow Manager capabilities to design, configure, and administer workflows.
- Workflow Manager Server Advanced**
In addition to the capabilities in the Standard role, the Advanced role provides functionality to support automated workflows.

Extended Properties Tables

Extended properties tables can be used to store properties or external data from feature service layers with jobs to meet specific business needs. Extended properties can be configured as one-to-one or one-to-many table relationships with the Workflow Manager jobs table.

Extended Properties	10.8.1	10.9.1	11.1	11.2	11.3	11.4	11.5
Create New 1:1 Extended Property Table	<input type="radio"/>	<input type="radio"/>	<input type="radio"/>	<input type="radio"/>	<input type="radio"/>	<input type="radio"/>	<input type="radio"/>
Set Field Properties	<input type="radio"/>	<input type="radio"/>	<input type="radio"/>	<input type="radio"/>	<input type="radio"/>	<input type="radio"/>	<input type="radio"/>
Add Feature Layer as Extended Property Table		<input type="radio"/>	<input type="radio"/>	<input type="radio"/>	<input type="radio"/>	<input type="radio"/>	<input type="radio"/>
Add Survey123 Form as Extended Property Table		<input type="radio"/>	<input type="radio"/>	<input type="radio"/>	<input type="radio"/>	<input type="radio"/>	<input type="radio"/>
Create New 1:M Extended Property Table		<input type="radio"/>	<input type="radio"/>	<input type="radio"/>	<input type="radio"/>	<input type="radio"/>	<input type="radio"/>
Share Extended Property Table		<input type="radio"/>	<input type="radio"/>	<input type="radio"/>	<input type="radio"/>	<input type="radio"/>	<input type="radio"/>



02
03
04
05
06
07
08
09
10

ArcGIS Workflow Manager

11.5

Functionality Matrix

ArcGIS Workflow Manager API

- Workflow Manager Server Standard**
The Standard role provides standard Workflow Manager capabilities to design, configure, and administer workflows.
- Workflow Manager Server Advanced**
In addition to the capabilities in the Standard role, the Advanced role provides functionality to support automated workflows.

ArcGIS Workflow Manager API

ArcGIS Workflow Manager API services offer access to information in your Workflow Manager repository to be used with web, mobile, and desktop applications. These APIs allow organizations to build custom apps and widgets.

API	10.8.1	10.9.1	11.1	11.2	11.3	11.4	11.5
Workflow Manager for Python	○	○	○	○	○	○	○
Workflow Manager REST API		○	○	○	○	○	○
Workflow Manager JavaScript API			○	○	○	○	○

ArcGIS Pro API

	2.9	3.1	3.2	3.3	3.4	3.5
Workflow Manager Namespace for ArcGIS Pro SDK		○	○	○	○	○