

# *Advancing your Curriculum with the Latest Image and Raster Analysis Tools in ArcGIS*



The willingness to experiment with innovative approaches to GIS has yielded benefits for numerous field-based teaching and research activities across the university.

– Peter Knoop | University of Michigan

# Webinar Housekeeping

- Microphones will be muted
- Please enter your questions in the chat box
- Q&A session at the conclusion of the webinar
- Webinar & slides will be available
- Survey following the webinar





**Poll time...**

Are you teaching Imagery & Remote Sensing?



# Presenters



Peter Becker  
Group Product Manager  
ArcGIS Imagery Product team



Vinay Viswambharan  
Principal Product Manager  
ArcGIS Imagery Product team



Canserina Kurnia  
Senior Solution Engineer  
Education team



# Agenda

- **Overview ArcGIS as a comprehensive imagery system and deployment options**
- **Explore Image and Raster analysis tools**
- **Deployment best practices for teaching and research**
- **Q&A and Resources**

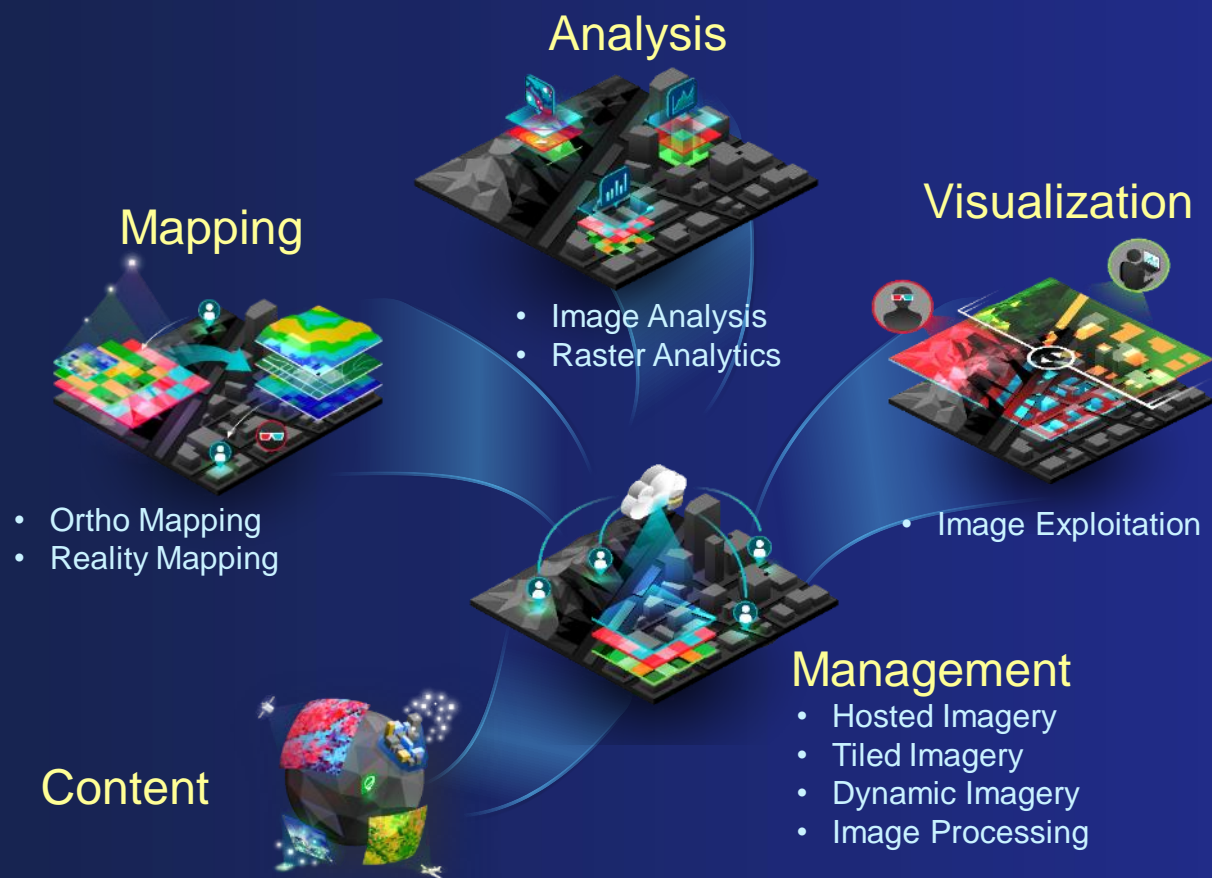
# ArcGIS Imagery Capabilities

A comprehensive imagery system



# Enabling the Imagery Capabilities of ArcGIS

Deployment options to suit your needs



## ArcGIS Image

**Desktop**  
ArcGIS Pro

ArcGIS Image Analyst

**Enterprise**  
ArcGIS Enterprise

ArcGIS Image Server

**SaaS**  
ArcGIS Online

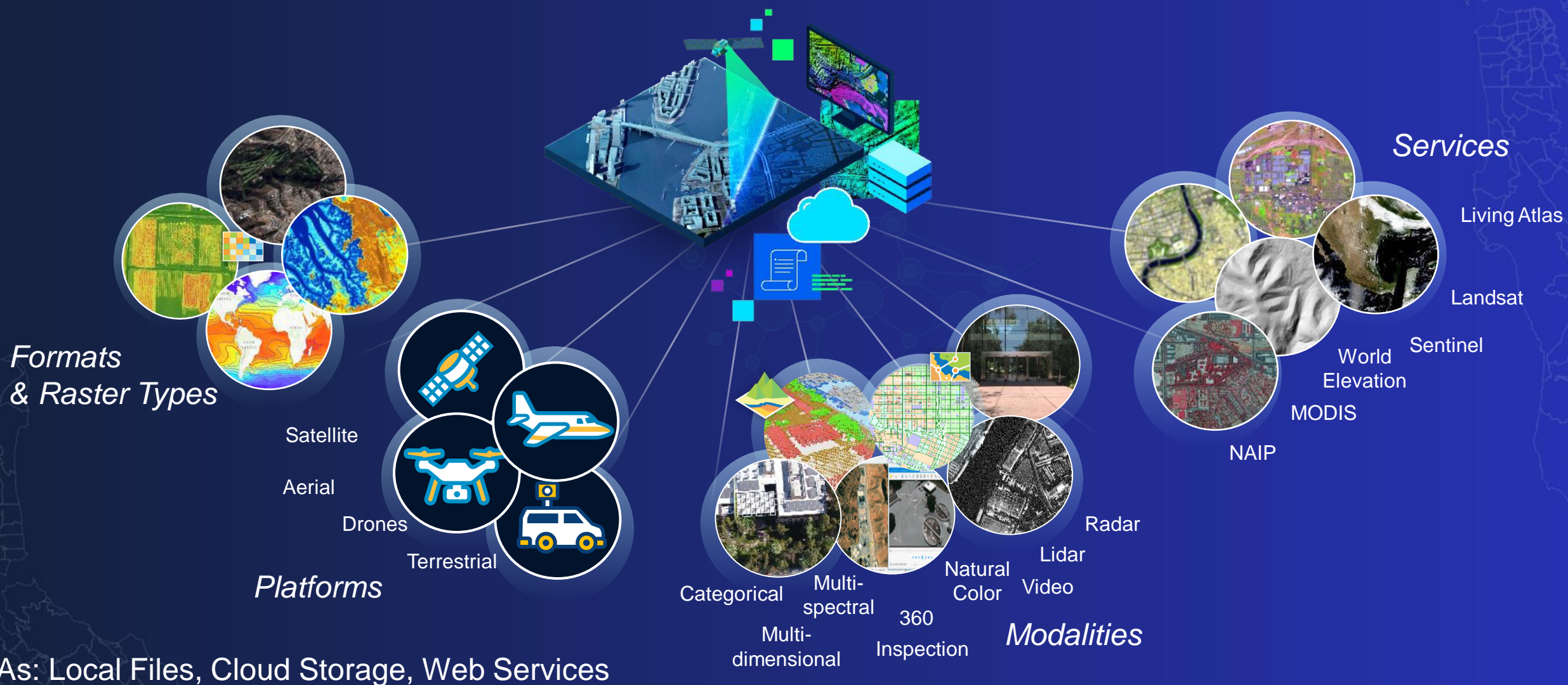
ArcGIS Image  
for ArcGIS Online

**Managed SaaS**  
Dedicated

ArcGIS Image Dedicated



# Content - Support for All Imagery and Rasters

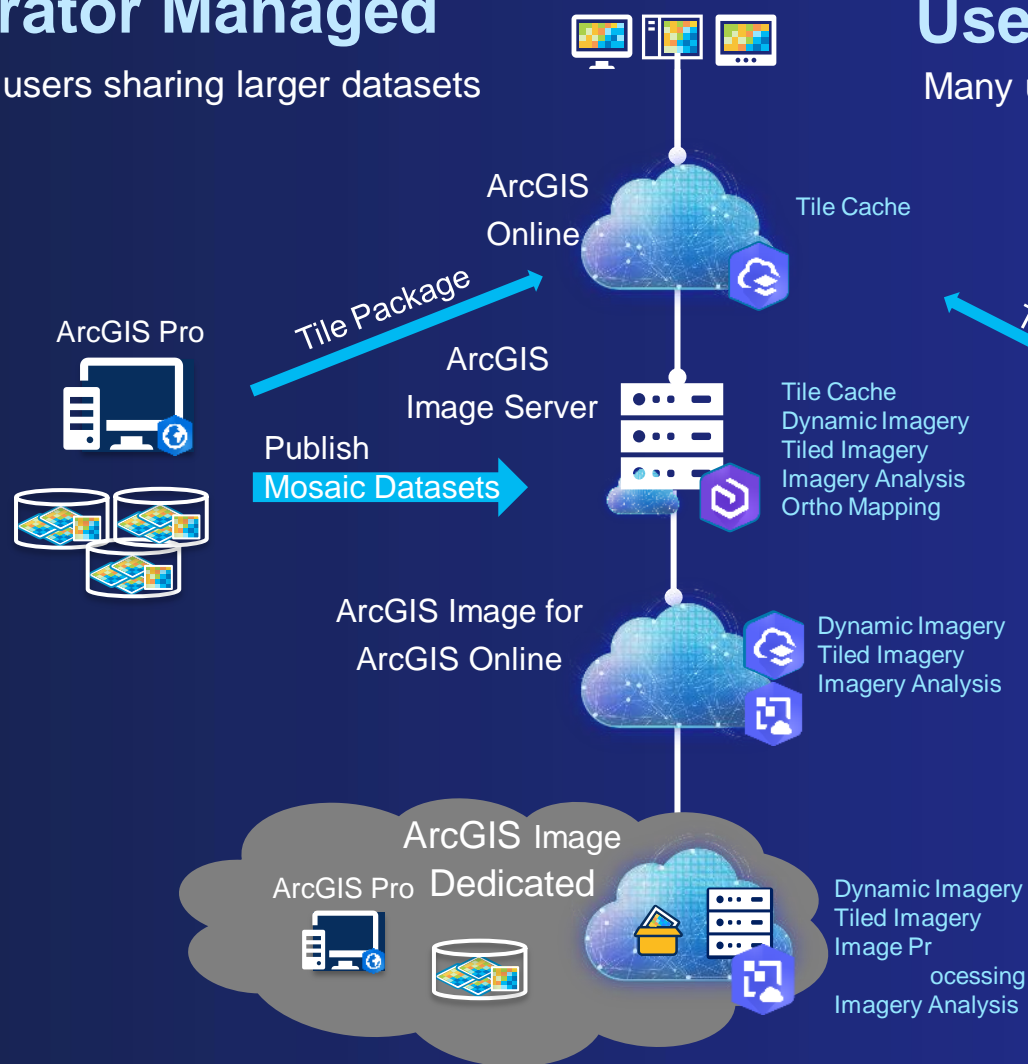




# Image Management Methodologies

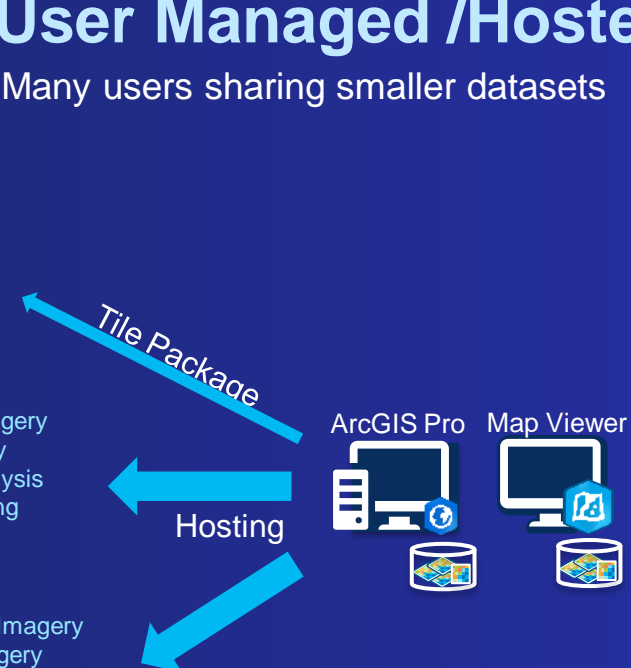
## Curator Managed

Few users sharing larger datasets

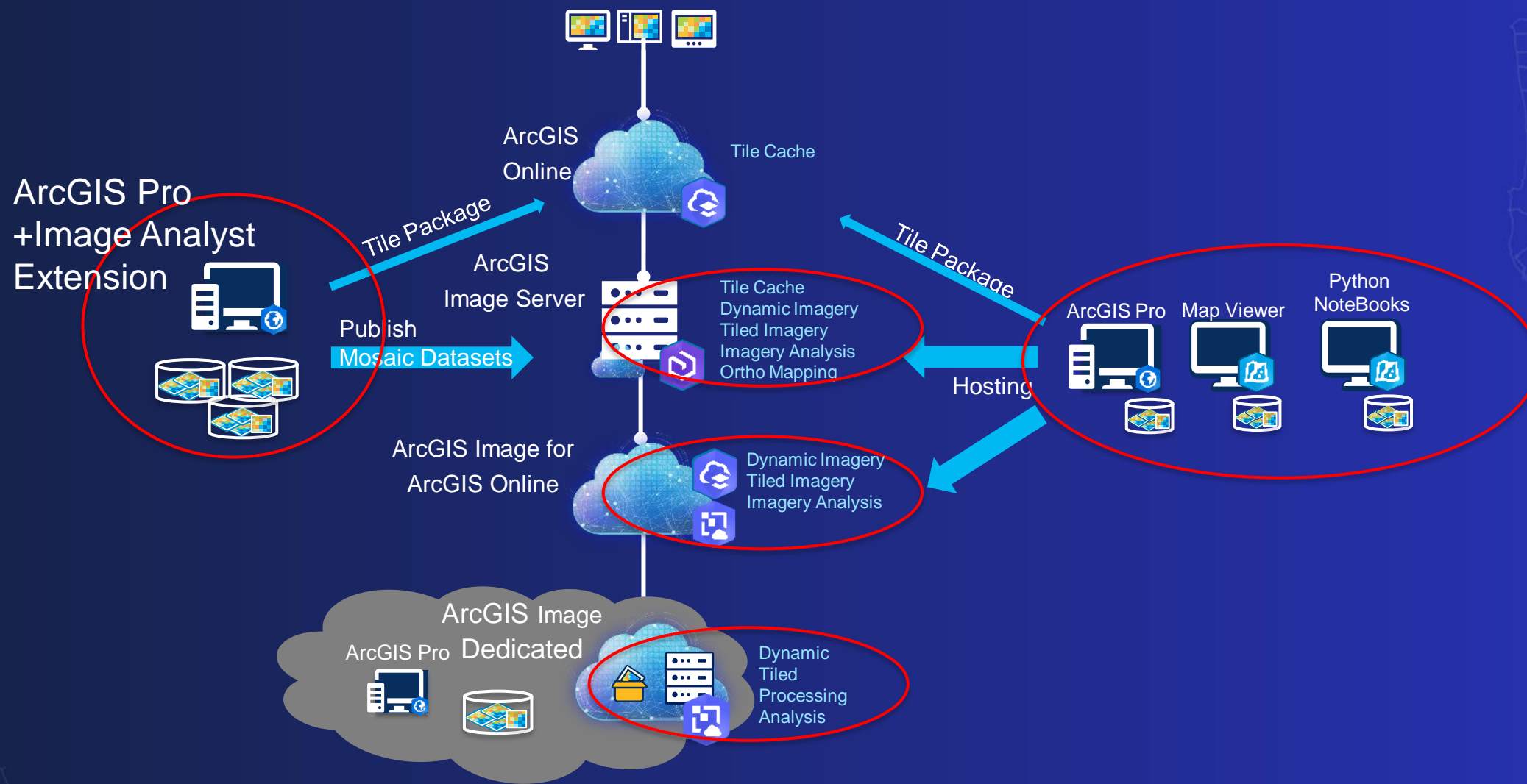


## User Managed /Hosted

Many users sharing smaller datasets



# Image Analysis in ArcGIS





## Poll time...

What primary tools are you using for image and raster analysis?





# Explore Image and Raster analysis tools

# Image Analysis

Extracting information from imagery

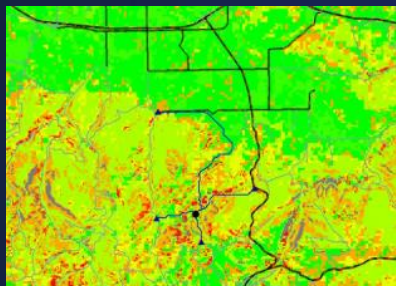


# Raster Functions

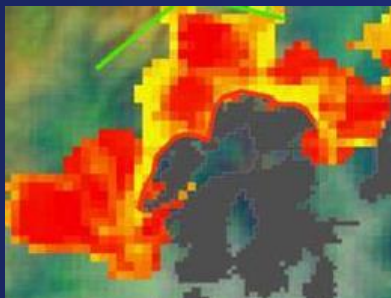
Raster analysis and image processing

Wildlife corridor assessments

Determining Routes



Modelling fire growth

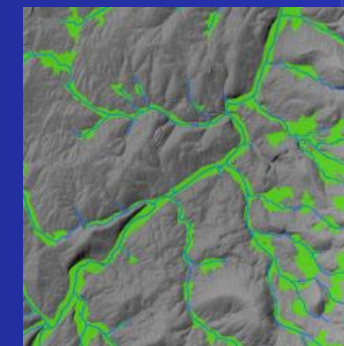


River classification

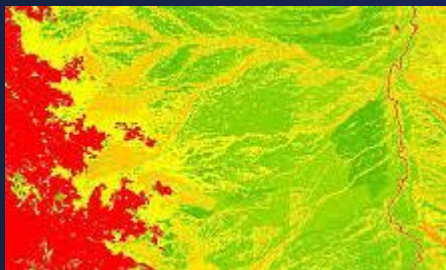


Identify errors in DEMs

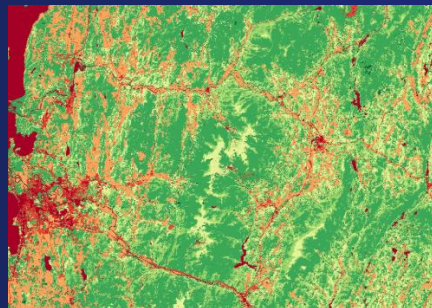
Creating watersheds



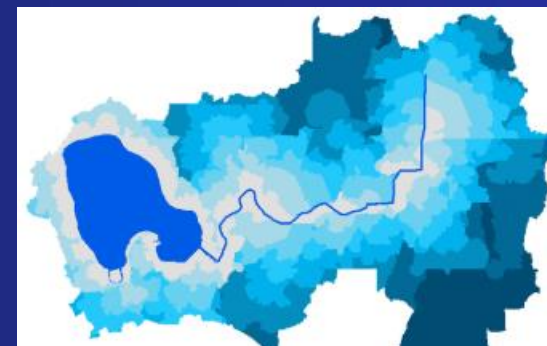
Cross Country Mobility



Determining first responder management areas



Floodplain delineation





# Raster Functions

## ArcGIS Pro ~50 Raster Functions

Math Operators  
Statistics  
Conversion  
Multiband Math  
Interpolate  
Band Math & Indices  
Surface Generation & Analysis  
Correction  
Python Raster Functions

## ArcGIS Image Analyst ~60 additional Raster Functions

Image Segmentation  
Classification  
Overlay (Sum)  
Statistics  
Math

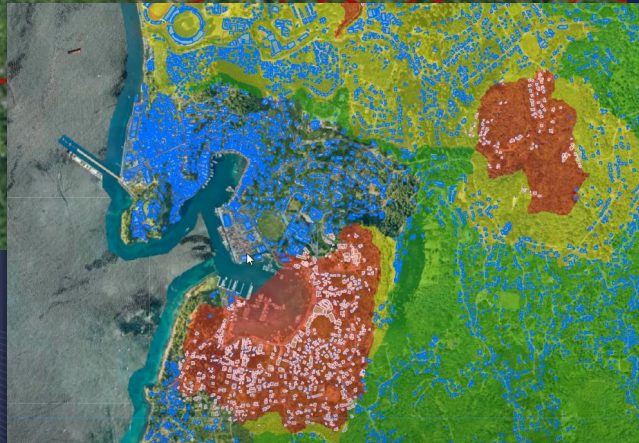
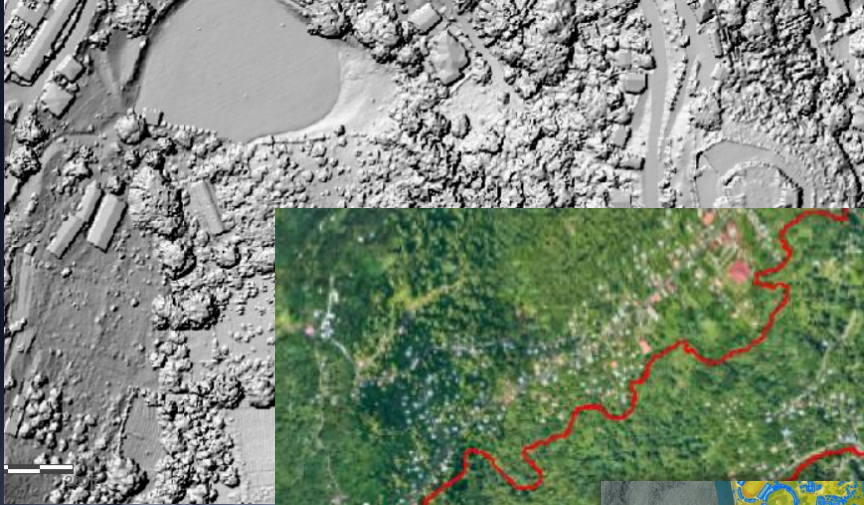
New functions (IAe Only)  
Generate Trend\*  
Predict Using Trend\*  
Detect Change Using Change Analysis \*\*  
CCDC Analysis\*\*  
Compute Change\*\*  
Trend to RGB\*\*

## ArcGIS Spatial Analyst ~20 additional Raster Functions

Distance & Density  
Hydrology  
Overlay (weighted)  
Viewshed  
Nibble

New functions in Pro  
Aggregate (SA)  
Multidimensional Filter (Basic)  
Multidimensional Raster (Basic)  
Random (Basic)  
Process Raster Collection (IA/SA)  
Linear Spectral Unmixing (IA/SA)  
Find Argument Statistics (IA/SA)  
Distance Accumulation (SA)  
Distance Allocation (SA)  
  
Updated functions in Pro  
Cost Path (SA)\*  
Cell Statistics (IA/SA)\*  
Zonal Statistics (IA/SA)\*

All functions are available on Enterprise and Online



## Image Processing and Raster Analysis

Raster functions – A tour



# Multidimensional Analysis

Our world is changing...

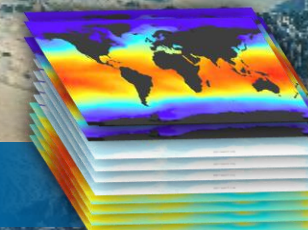
Find anomalies  
Explore trends  
Predict and forecast  
Evaluate changes

## Dimensions

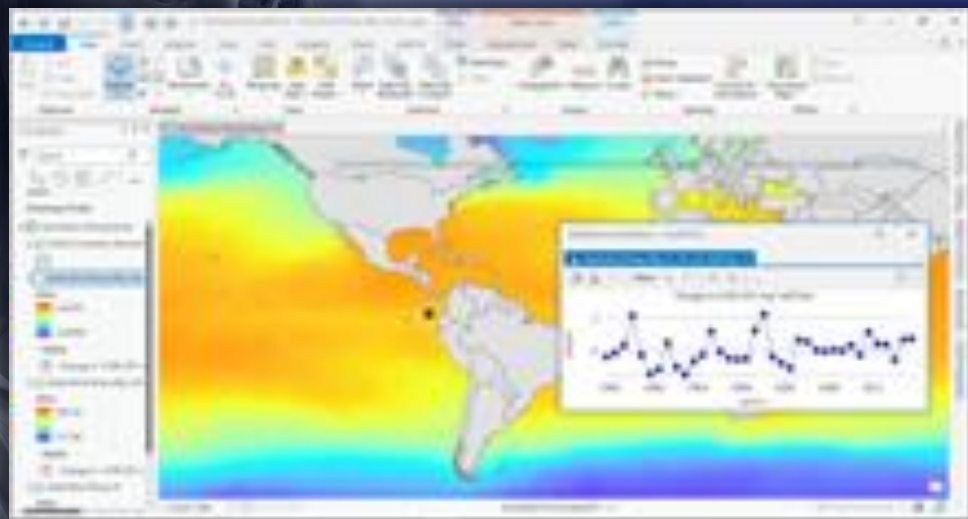
- X,Y,Z
- Time
- Pressure
- Depth

## Variables

- Raster data
- Optical Imagery







## Demo – Multidimensional Analysis

- Visualizing Multidimensional data
- Predictive Analysis

# Change Detection

Compare images or time-series images

Percent change

Identify changes

Categorical change

Image to  
Image  
Change  
Detection



Time1



Time2



Change

Time Series  
Analysis

Largest

Duration

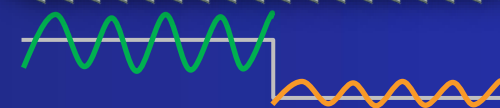
Most recent  
change

Number of changes

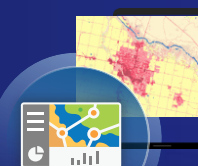
Extent

Classify data

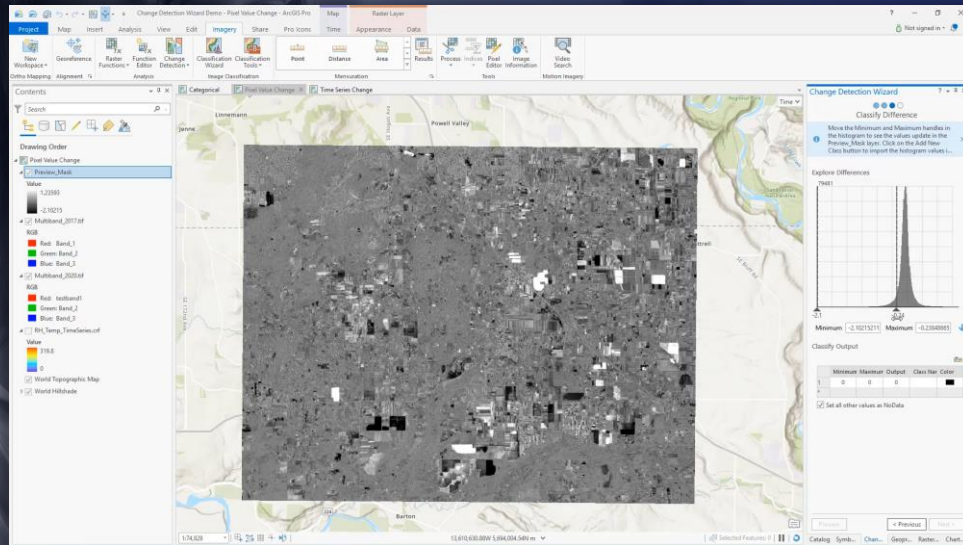
**LandTrendR**  
**CCDC**



Abrupt Change



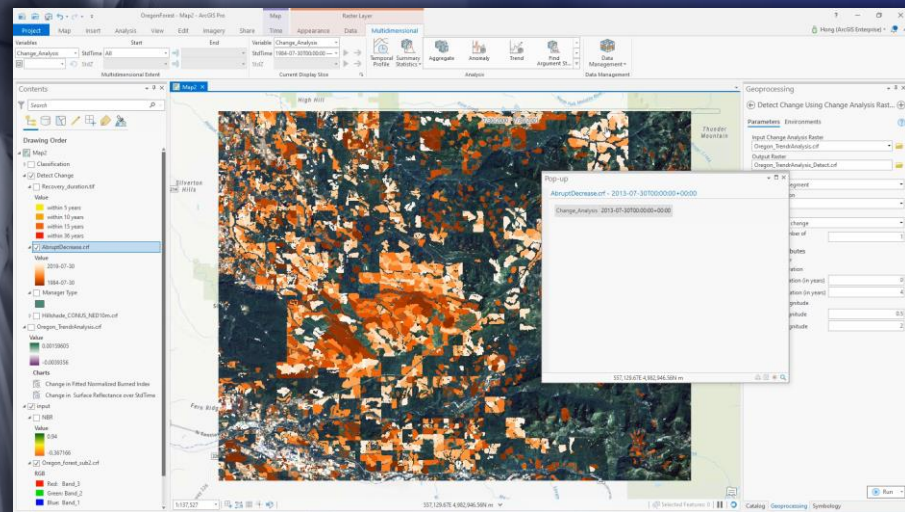
Change  
Detection



# Demo - Change Detection

- Change detection wizard
- Analyze timber harvest patterns & Identify illegal logging






# Demo - Change Detection

- Change detection wizard
- Analyze timber harvest patterns & Identify illegal logging



# Why is deep learning important?

Traditional human data interpretation doesn't scale....



More sensors  
Large volumes of imagery  
Velocity of data  
Automation  
Accuracy

# Deep Learning in ArcGIS

Data Management



Labelling



Data Prep



Train Model



Inferencing



Derive Insights



Sharing



ArcGIS provides comprehensive deep learning workflows

## For Wide Range of Data Types

- Aerial
- Satellite
- Radar
- Text
- Lidar
- Features
- Motion Imagery
- Bathymetry
- Point Cloud
- Drone

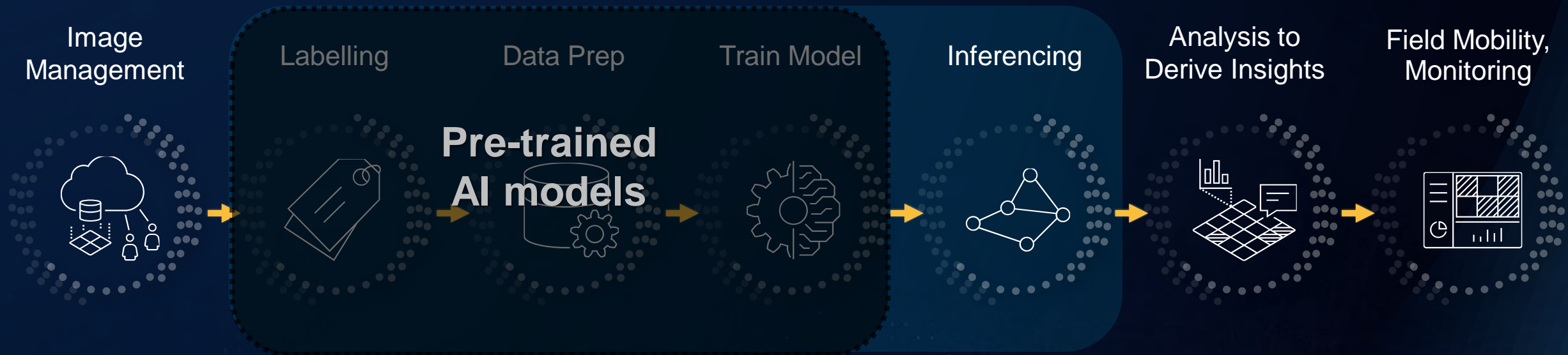
## Implementing Many Tasks

- Object Classification
- Object Detection
- Pixel Classification
- Image Translation
- Object Tracking
- Scanned Maps
- Feature processing
- Unstructured text processing

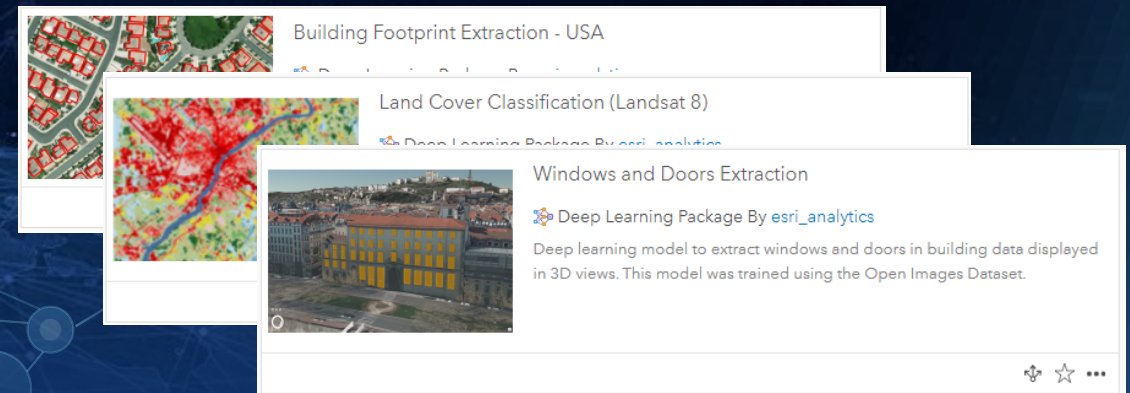


# Deep Learning in ArcGIS

## Pre-trained models



- Eliminates:
  - Imagery requirements for model training
  - Labelling requirements
  - Training AI models
  - Massive compute requirements



# ArcGIS Python Libraries

Python for raster analysis

Convert and manage  
imagery and raster data

Build machine and deep  
learning models

Perform advanced analytics

Automate workflows



## ArcGIS API for Python

Simple and lightweight library for managing imagery and raster data, managing your Web GIS, and performing advanced image analysis.

## ArcPy

Comprehensive and powerful library for imagery and raster analysis, data management, and conversion.

*Available across ArcGIS. . .  
. . . In Pro, Enterprise, and Online*

# Python for multidimensional raster

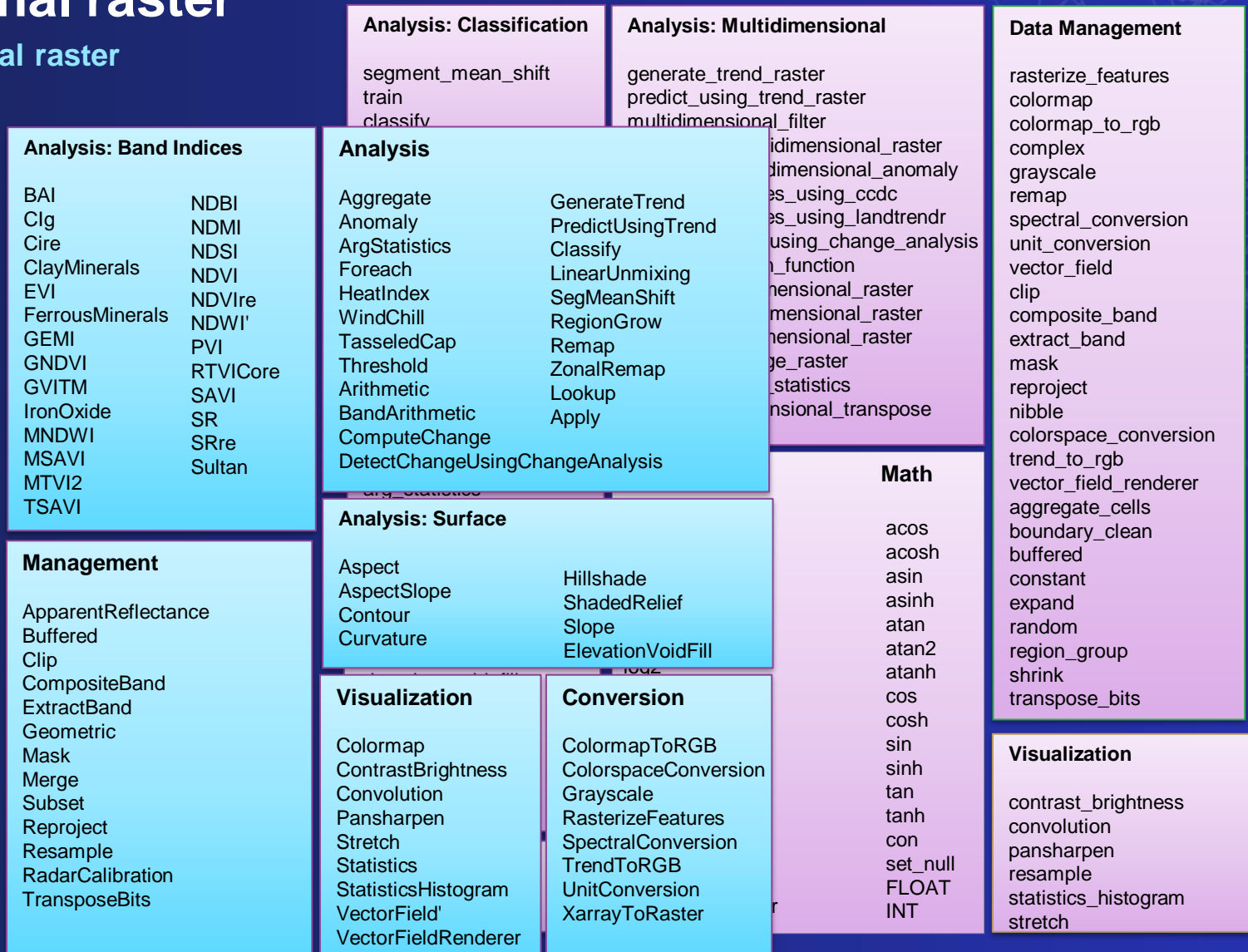
Rich APIs for working with multidimensional raster

- **ArcGIS API for Python**

- web and imagery layers
- Distributed computing
- Output as web layers

- **ArcPy**

- Local data or web layers
- Parallel processing
- Output local dataset



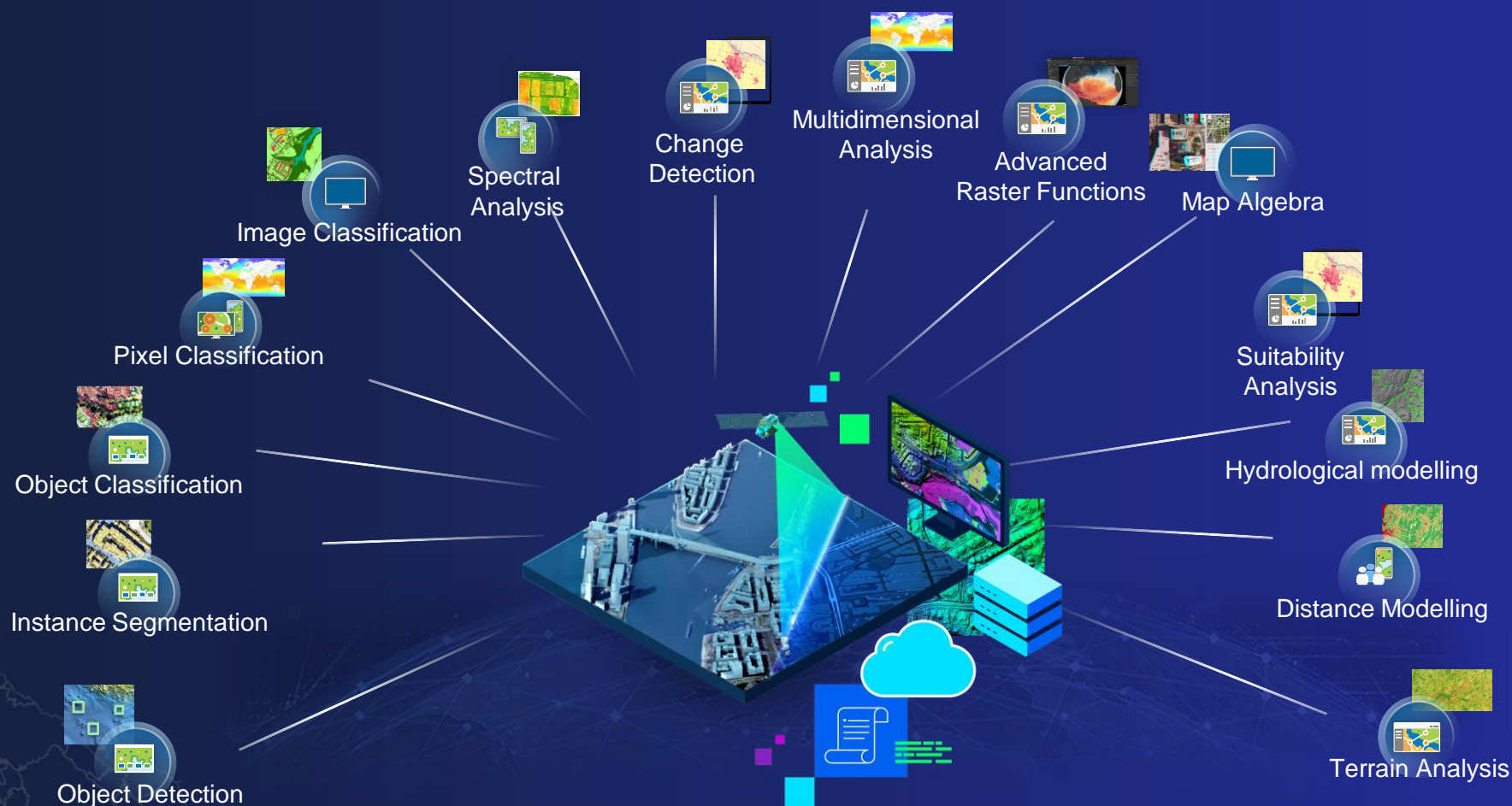


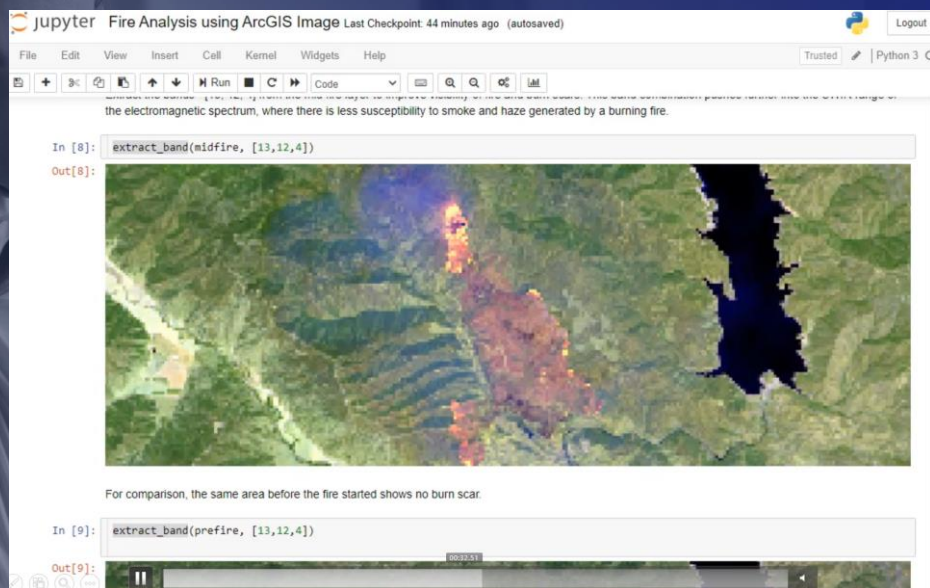
# Raster Analytics in ArcGIS Online

ArcGIS Image for ArcGIS Online

## ArcGIS Image for ArcGIS Online

- 150 + raster functions
- 26 Ready-to-use tools
- Deep learning tools
- Raster function editor
- Supports tiled and dynamic layers
- Can output tiled and dynamic layers

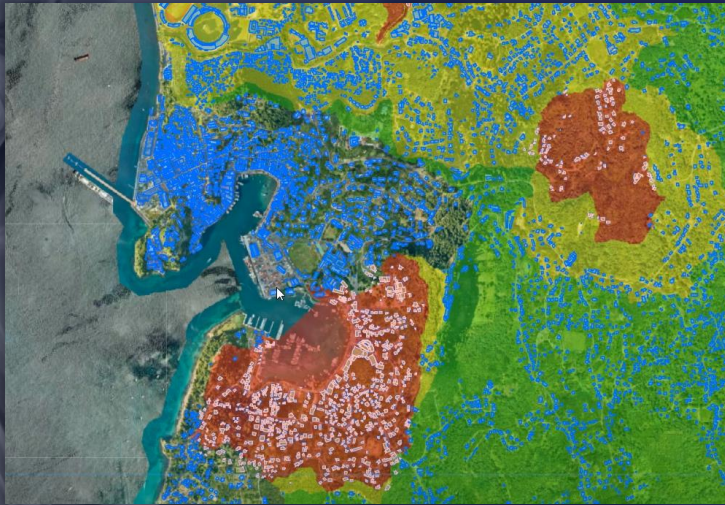




# Demo – Raster analysis in ArcGIS Online

ArcGIS Api for Python – Burn scar delineation





# Demo: ArcGIS Image – Raster Analytics in ArcGIS Online

Burn scar assessment



# Image Analysis

Extracting information from imagery

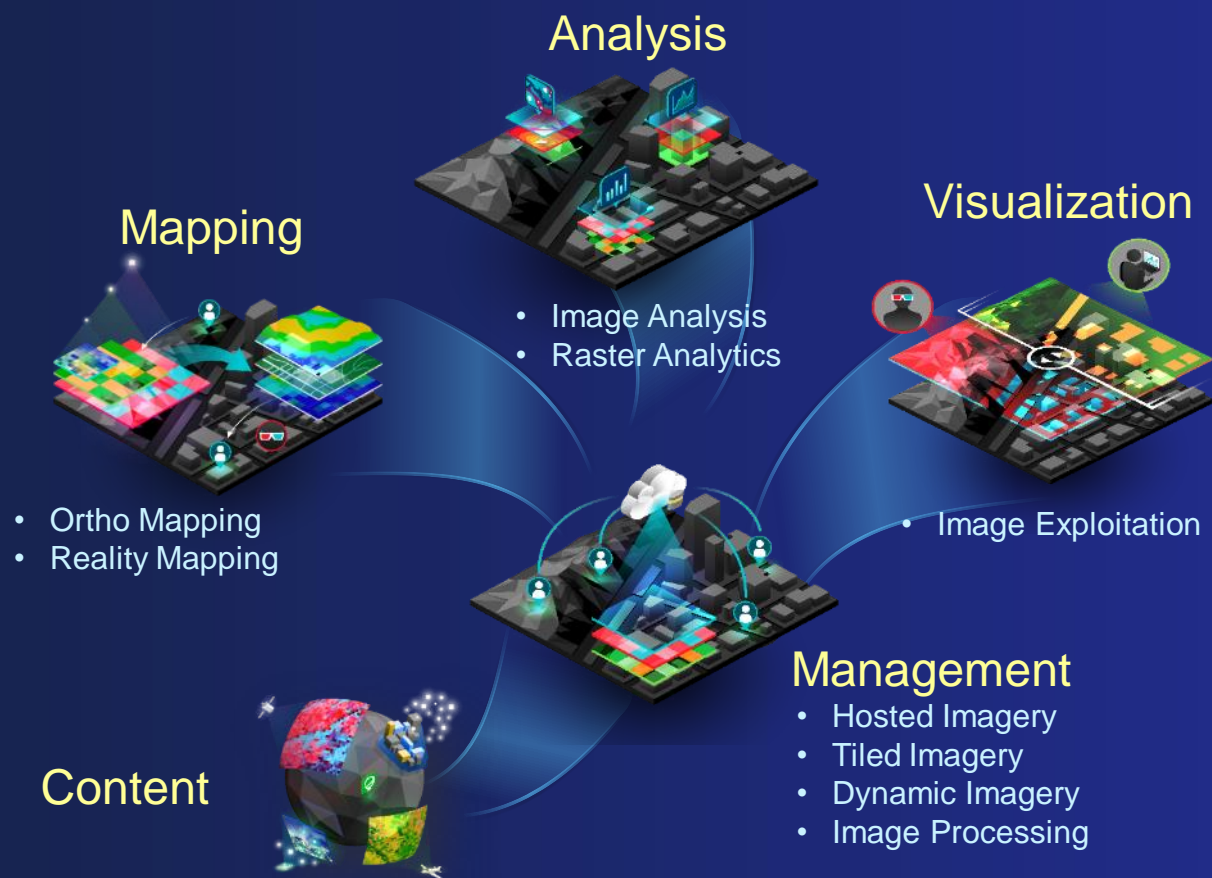




# Deployment options for teaching and research

# Imagery Enabling the Imagery Capabilities of ArcGIS

Deployments to suit your needs



## ArcGIS Image

**Desktop**  
ArcGIS Pro

ArcGIS Image Analyst

**Enterprise**  
ArcGIS Enterprise

ArcGIS Image Server

**SaaS**  
ArcGIS Online

ArcGIS Image  
for ArcGIS Online

**Managed SaaS**  
Dedicated

ArcGIS Image Dedicated



# ArcGIS Image – Deployment Options for Teaching and Research

## Desktop ArcGIS Pro

ArcGIS Image Analyst

- Primary workstation for all image and raster processing and analysis tools
- Connected desktop - work locally and/or connected to the web
- Available to all teaching and research

## Enterprise ArcGIS Enterprise

ArcGIS Image Server

- Enterprise solution - For central management
- Serving Imagery, Hosted imagery, Scale up analytics
- Use Desktop, Web or Notebooks as clients
- Requires on-premise or cloud infrastructure

## SaaS ArcGIS Online

ArcGIS Image  
for ArcGIS Online

\* Release June 2021

- ArcGIS Online extended to Host, Analyze and Stream Imagery and Rasters
- Full SaaS – No infrastructure
- Consume credits
- Requires administrator to enable

## Managed SaaS Dedicated

ArcGIS Image Dedicated

\* Release June 2021

- Managed SaaS deployment in the cloud
- For processing and analysis of very large global datasets
- Esri managed infrastructure



# Q/A Session





# Resources

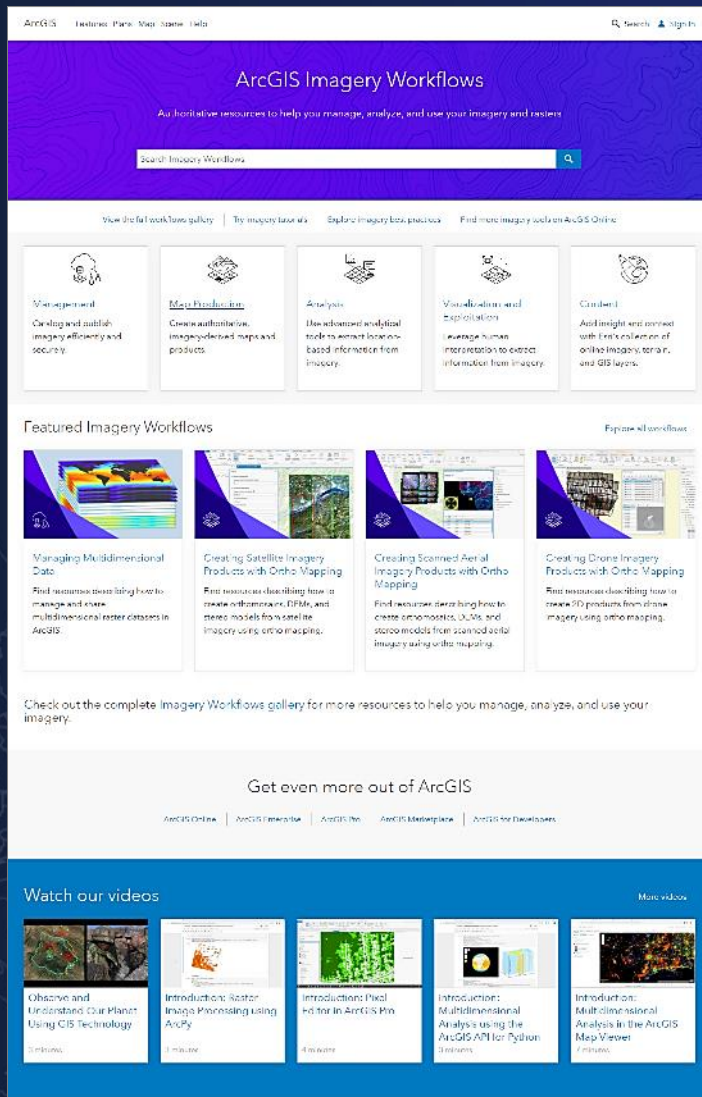




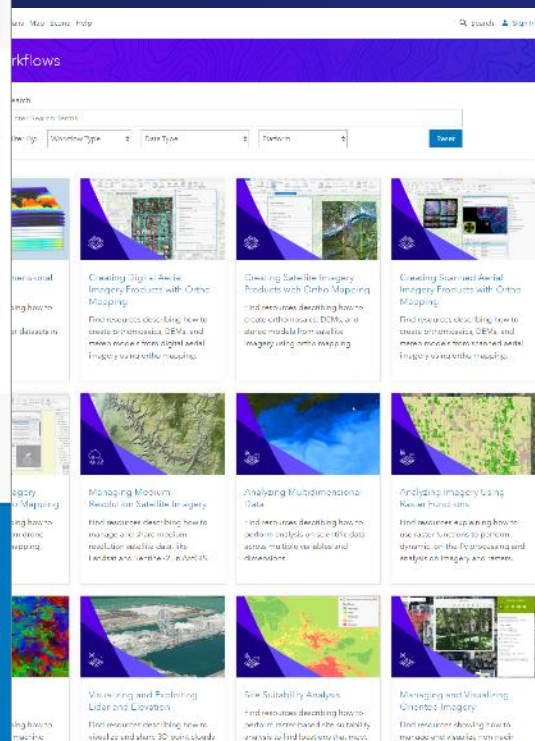
# Imagery Workflows

## Jumping-off point for accomplishing common imagery tasks with ArcGIS

- **Workflows** aggregate resources from across Esri
- **Tutorials** get you started with sample data and step-by-step instructions
- **Best Practices** offer a deep dive into the technical weeds



[esriurl.com/imageryworkflows](https://esriurl.com/imageryworkflows)



### New content

#### Workflows

- Visualizing and Exploiting Lidar and Elevation
- Performing Image Classification
- Analyzing Imagery Using Raster Functions
- Analyzing Multidimensional Data
- Managing Medium-Resolution Satellite Imagery
- Creating Drone Imagery Products with Ortho Mapping
- Creating Scanned Aerial Imagery Products with Ortho Mapping
- Creating Satellite Imagery Products with Ortho Mapping
- Creating Digital Aerial Imagery Products with Ortho Mapping
- Managing Multidimensional Data

#### Tutorials

- Creating drone imagery products in ArcGIS Pro
- Creating digital aerial imagery products in ArcGIS Pro
- Creating satellite imagery products in ArcGIS Pro

#### Best practices

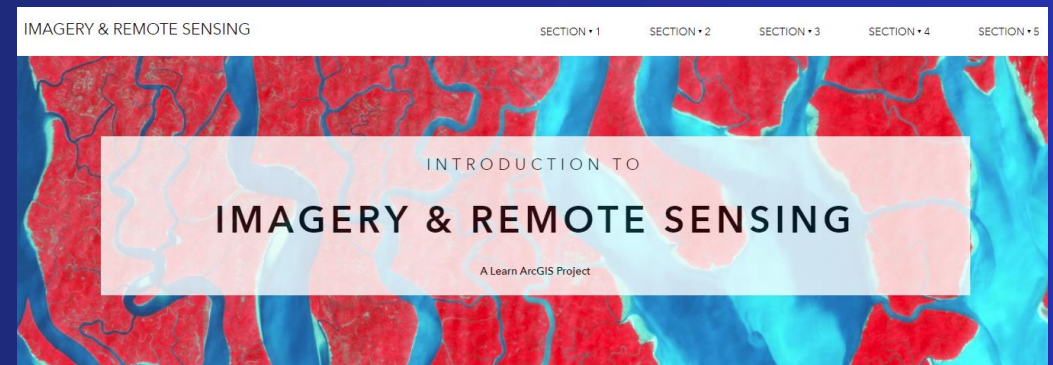
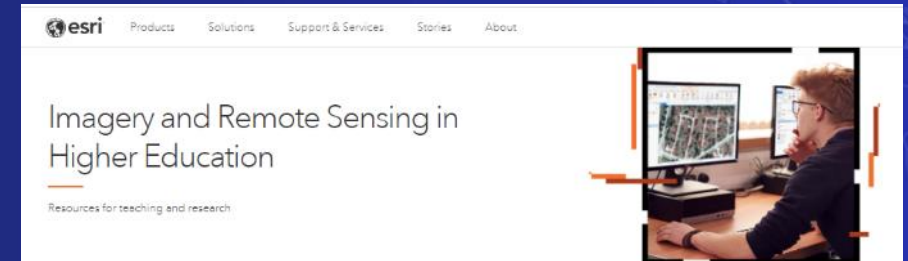
- Imagery in the Cloud
- Managing Multidimensional Data
- Using ortho mapping with scanned aerial imagery

# Resources

## Imagery & Remote Sensing

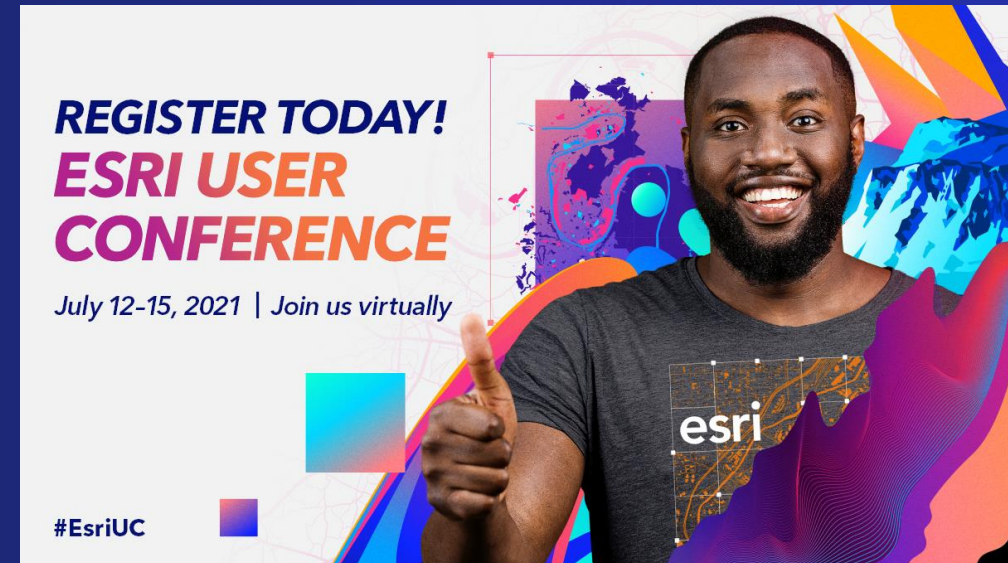
We will send all the list of resources:

- Imagery Workflows:
  - [Imagery Workflows](#)
- Educational Resources:
  - [Materials to aid the development of university-level curricula](#)
  - [Imagery in Action MOOC](#) – starting August 11<sup>th</sup>
- Webpages:
  - [Imagery and Remote Sensing in Higher Education](#)
  - [Imagery & Remote Sensing product page](#)





Join us



*Stay tune for more Imagery and Remote Sensing webinars in Fall 2021*



Thank you and please fill in the exit survey



To connect, please reach out to Canserina at:

[ckurnia@esri.com](mailto:ckurnia@esri.com)