

Optimizing Utilities: Digitally Transforming Network Management

Brian Baldwin – Esri (bbaldwin@esri.com)

Junjie Ma - Esri

Mary Colomaio – Cornell University

Tom DeWitte - Esri



Webinar Housekeeping

- Please enter your questions in the chat box
- Microphones will be muted
- Q&A session at the conclusion of the webinar
- Webinar & slides will be available
- Survey following the webinar



Welcome to the 'Campus Operations' webinar series!

- Webinar 1 (September 16 at 10 AM PT)—
Getting Started: Building Your Spatial Foundation
- Webinar 2 (October 7 at 10 AM PT) - Bringing
GIS Indoors: Space Planning and Optimization
- Webinar 3 (October 28 at 10 AM PT) - Building
a Mobile Workforce: Getting Decision Support
into the Field
- **Webinar 4 (November 18 at 10 AM PT) -
Optimizing Utilities: Digitally Transforming
Network Management**



Optimizing Utilities - Outline

- Network Management with GIS
- Fiber Management (demonstration)
- Mary Colomaio – Cornell University
- District Heating & Cooling with the Utility Network (demonstration)
- Resources
- Q&A





**Data silos /
Outdated information**

Covid-19

**Shrinking
budgets**

**Workforce
turnover**

**Aging
assets**

GIS for Campus Utilities

- Where are my assets?
- How old are these pipes/valves?
- Where are unsafe conditions?
- Where is water loss occurring?
- Active construction/projects?
- Real-time voltage?



Geospatial Infrastructure

Empowering All Types & Aspects of Infrastructure Management



Infrastructure Management Is Evolving

Becoming Dynamic and Transformational



Network Management: 1-2-3

1. Data Management for ArcGIS Online
2. Utility Network (FGDB)
3. Utility Network (Enterprise)



Junjie Ma

Esri



Network Management: 1-2-3

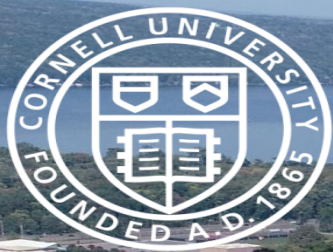
1. Data Management for ArcGIS Online



Mary Colomaio

Cornell University





Conversion of Utility Data from MicroStation to ArcGIS

Mary Colomaio M.S GIST
Utility Mapping Program Manager
Facilities and Campus Services

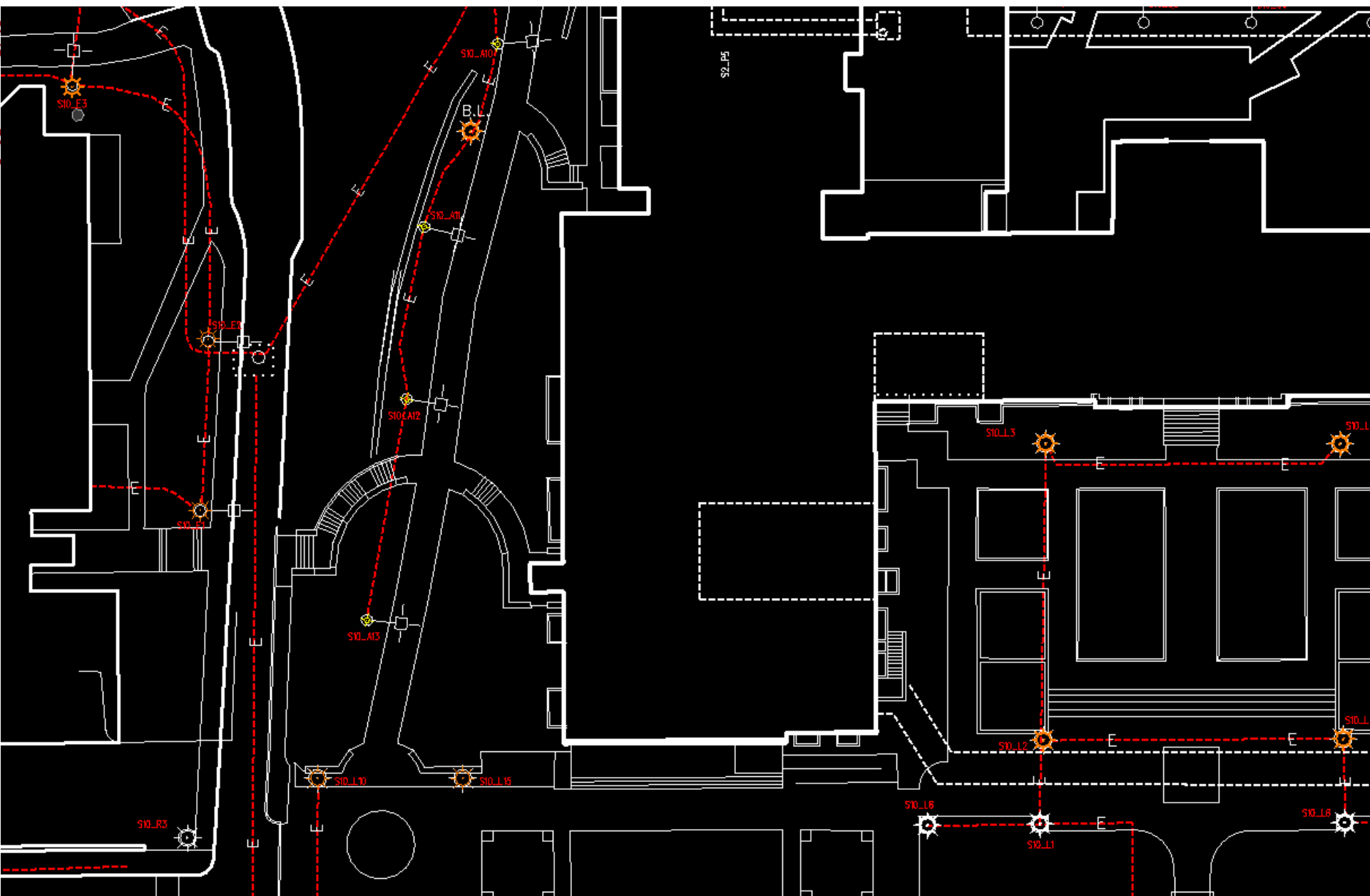
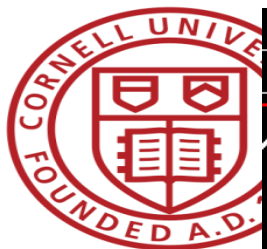
Why?

- Cornell as 12 distinct utility networks
 - Each utility has associated information and books
 - Data lives mainly in Excel
 - Not currently accessible in the map



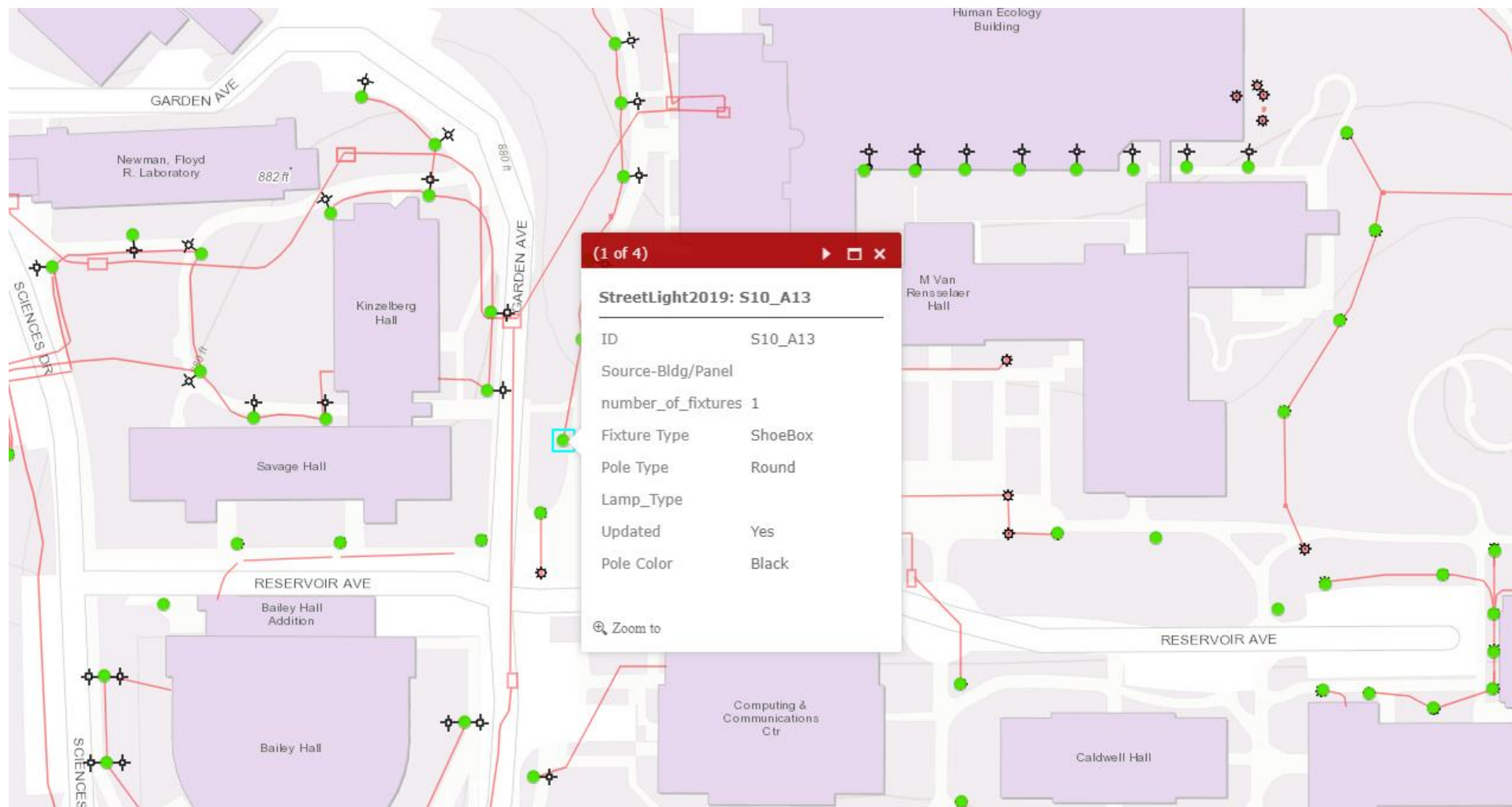
Bentley MicroStation

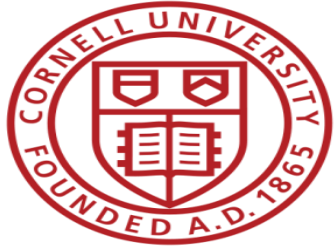
- CAD software platform primarily used for drafting and 2D/3D design
 - Architects and engineers are typical users
 - Some utilities use MicroStation to design and map assets
 - Cornell Facilities Engineering currently uses MicroStation for utility asset management



Esri ArcGIS Enterprise

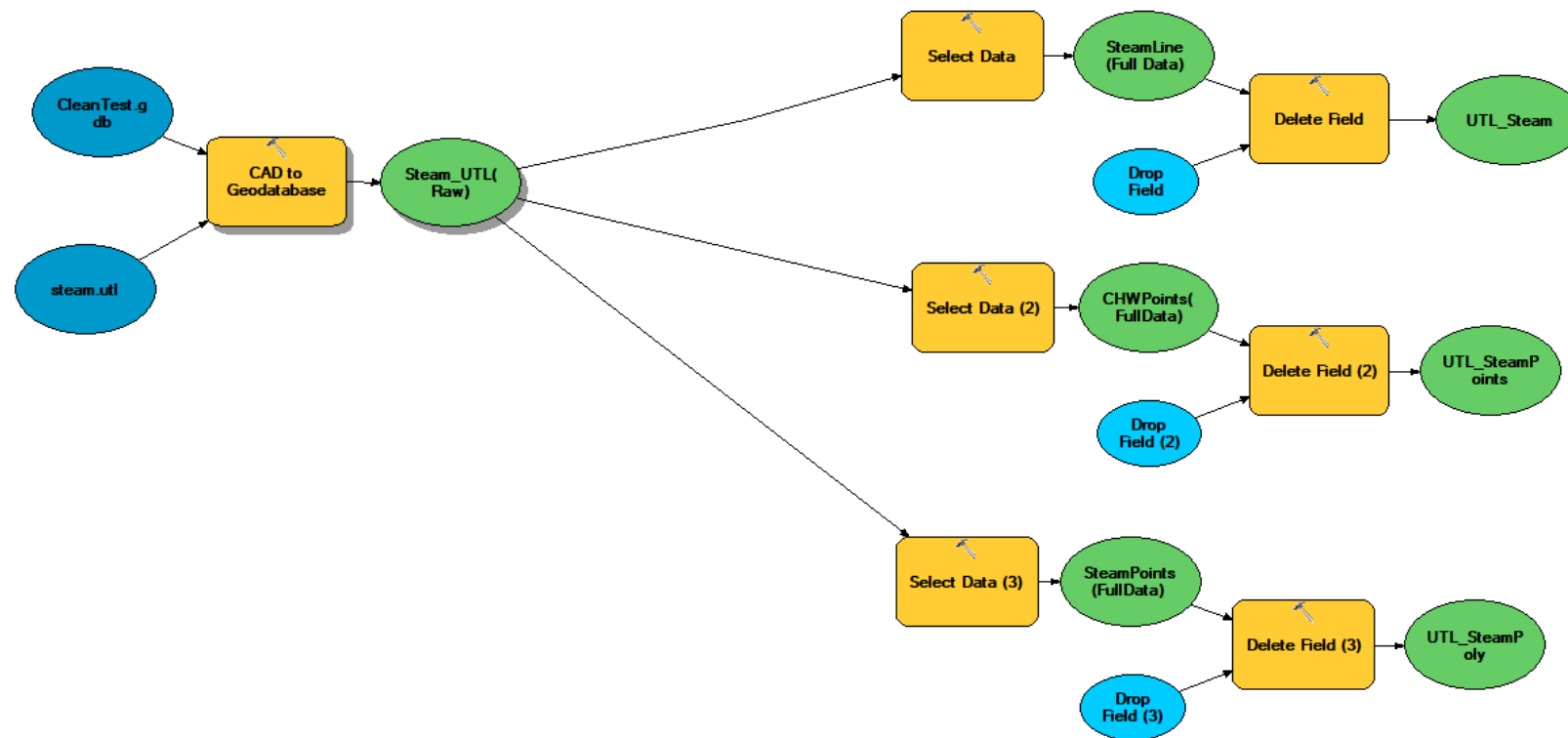
- GIS software products used across numerous industries including utility management
- Facilities and Campus Services already has departments that utilize the full spectrum of Esri Products

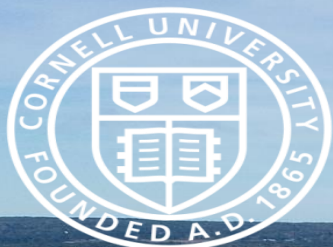




How?

- Data Inventory
- Development of Enterprise Database(s)
- QA/QC of Data
- Model Builder Processing





Thank You!

Mary Colomaio
Utility Mapping Program Manager
201 Humphreys Service Building
Ithaca, NY 14853

T. 607-255-6646
E. mcc298@cornell.edu

Tom DeWitte

Esri



Network Management: 1-2-3

1. Data Management for ArcGIS Online
2. **Utility Network (FGDB)**
3. **Utility Network (Enterprise)**

- Structure Networks
- Domain Networks
- Terminals
- Network Tiers
- Sub Networks
- Asset Types and Groups

Advanced Network Modeling

- Containments
- Tracing
- Diagrams

Visualization and Analysis

- Access and Roles
- Services Based

Architecture & Security



Water
Electric
Gas
Telecom
District Heating

... Foundations of a Modern GIS

Network Management: 1-2-3

1. Data Management for ArcGIS Online

1. Base data model, web & mobile visualization, and editing

2. Utility Network (FGDB)

1. Network connectivity, single-user desktop

3. Utility Network (Enterprise)

1. Network connectivity, multi-user, web & mobile



Key Takeaways

- Where? What?
 - Mobile/Web access
- Asking questions of the data
- Network Management '1-2-3'



Resources

Welcome to the 'Campus Operations' webinar series!

- Webinar 1 (September 16 at 10 AM PT)—
Getting Started: Building Your Spatial Foundation
- Webinar 2 (October 7 at 10 AM PT) - Bringing
GIS Indoors: Space Planning and Optimization
- Webinar 3 (October 28 at 10 AM PT) - Building
a Mobile Workforce: Getting Decision Support
into the Field
- Webinar 4 (November 18 at 10 AM PT) -
Optimizing Utilities: Digitally Transforming
Network Management





Smart Campus Operations

ArcGIS is deployed on college and university campuses across the world, helping them operate more effectively and efficiently.

By providing field staff with timely, accurate information; management with real-time metrics and spatial situational awareness; and students, staff, and visitors with visualization and analytical tools; GIS helps to build and manage smart campuses.

"At the heart of all of this decision making...is data that we can manage, report, visualize, and manipulate through GIS"

Brian Swanson, Assistant VP and CFO, University of Minnesota



Covid-19 Resources

Covid-19 will continue to have a dramatic impact on both the academic as well as operational aspects of higher education. The resources below are just a subset of many of the videos, blogs, and solutions that Esri has released to assist.



Resources		
	What	Description
Solution	Solution	Gallery listing all of the "1-click" solutions

Actions

- Contact account managers
 - Where do I start?
 - Data quality? Migration? Utility Network vs. Network Management for ArcGIS Online?
 - What's my licensing?
- Survey
 - Have Esri rep. contact you (me)
- Questions/Issues:
 - Brian Baldwin - bbaldwin@esri.com
- Resource pages/links



Thanks so much!

Q&A



esri

THE
SCIENCE
OF
WHERE