

Understand, Plan, & Act: Campus Safety with ArcGIS

Justin Anderson – Esri

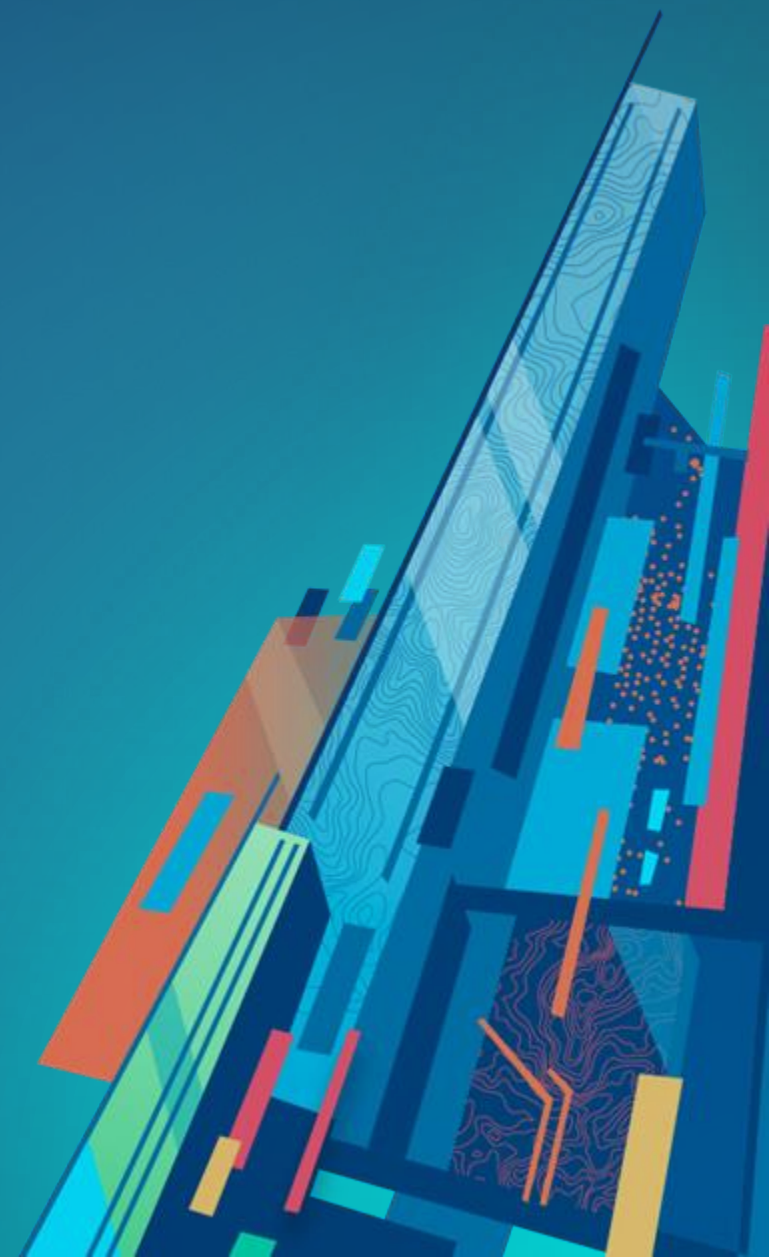
Brian Baldwin – Esri

Daniel Gessman – University of South Florida

Ridge Waddell – Esri

Transform Campus Operations with ArcGIS

Fall Webinar 3



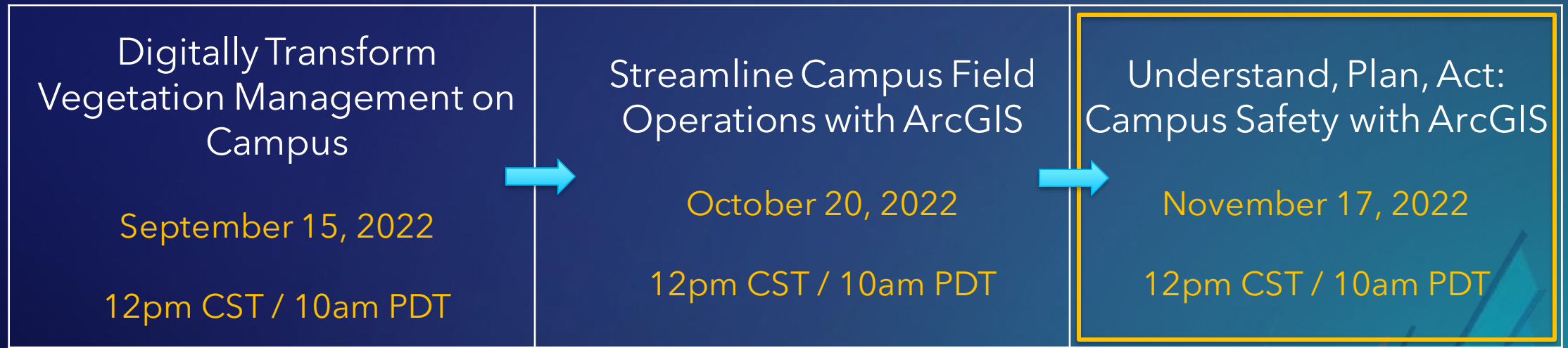
Agenda

- Introduction
- Esri Campus Safety Solutions
- Mapping Emergencies at USF
- Account Management Support
- Esri Resources
- Q&A

Webinar Housekeeping

- Please enter your questions in the chat box
- Microphones will be muted
- Q&A session at the conclusion of the webinar
- Webinar & slides will be available
- Survey following the webinar

Welcome to "Digitally Transforming Campus Operations with GIS" webinar series





Campus Safety & Security Solutions

Common Challenges for Campus Safety and Security

**Preparing for and
Responding to Crises**

**Understanding Criminal
Activity On and Around
Campus**

**Ensuring Safety and
Security at Campus
Events**

**Coordinating with
Outside Agencies**

**Maintaining Situational
Awareness**

ArcGIS for Public Safety

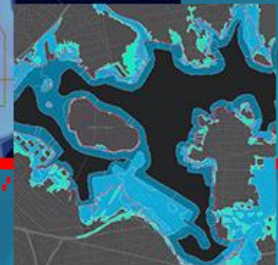
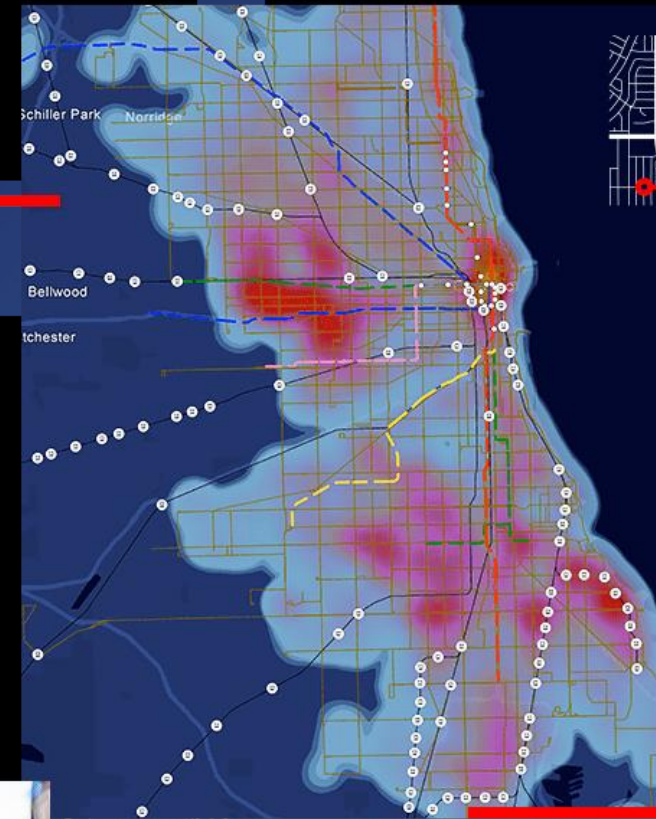
Emergency Communications

Emergency Management

Fire, Rescue, and EMS

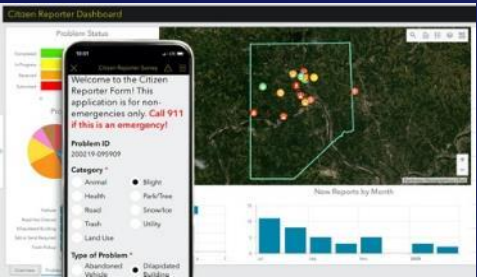
Law Enforcement

Homeland Security

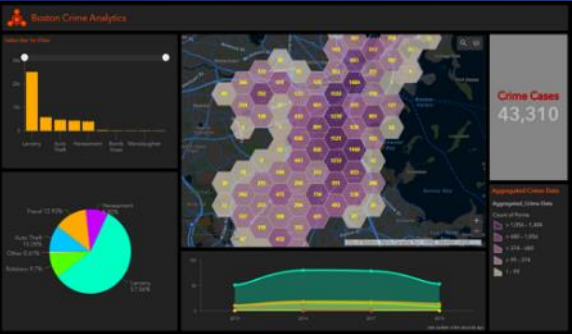


Campus Safety with GIS Today

Citizen Reporting



Crime Density



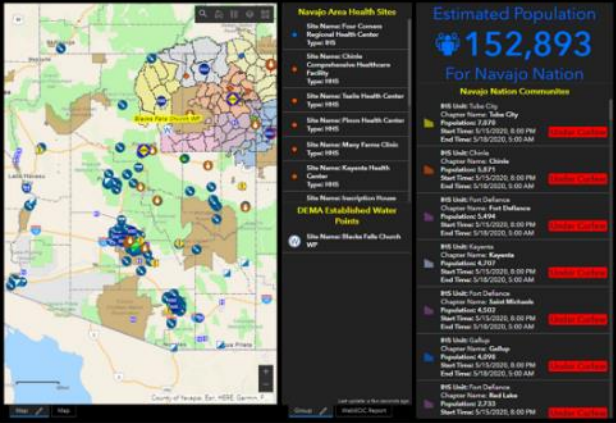
Campus Navigation App



Event Management



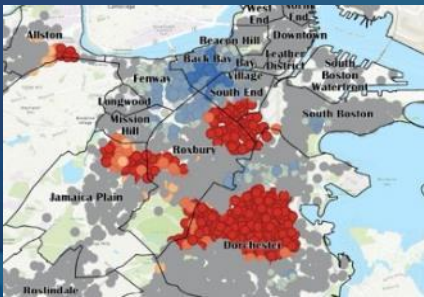
Emergency Management



Emergency Evacuation



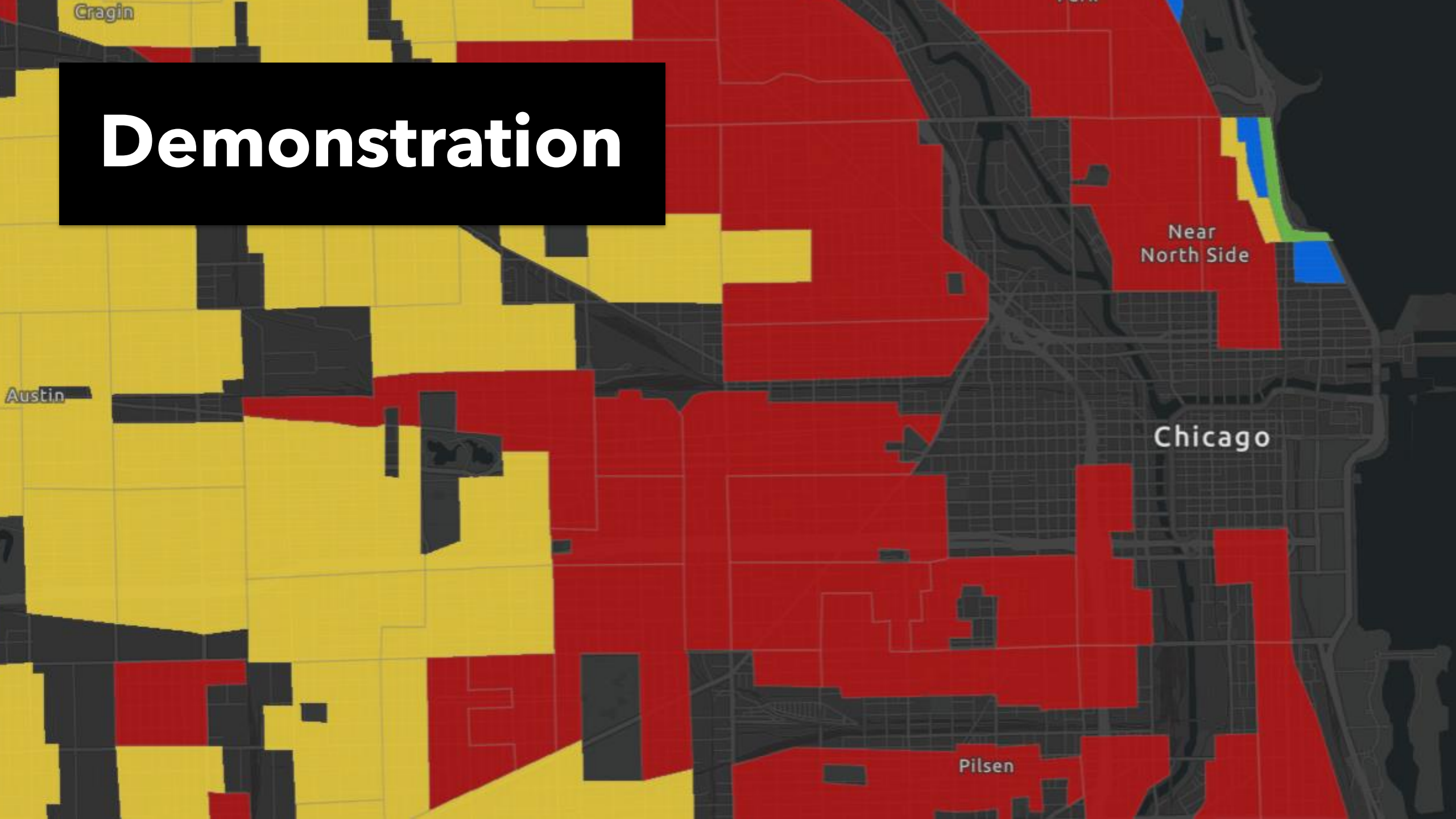
Hot Spot Patterns



Campus Visualization

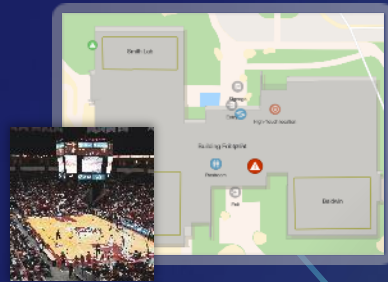


Demonstration

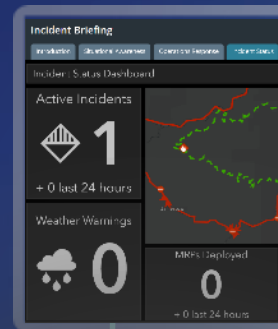


ArcGIS | One System Supporting Many Missions

Event Management



Bulletins & Briefings



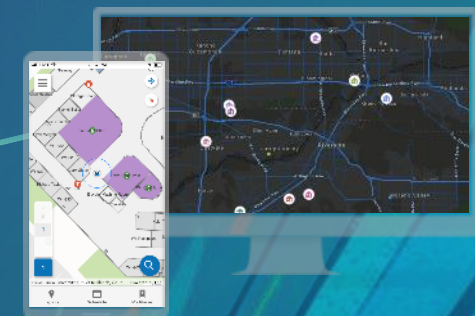
Executive Dashboards



Real-time Crime Centers



Daily Operations



CAMPUS BASEMAP | MOBILE REPORTING | PERSONNEL TRACKING | COMMON OPERATIONAL PICTURE | SPECIAL EVENTS | CRIME ANALYSIS



Mapping Emergencies at University of South Florida



Daniel Gessman

**Building Information
Services GIS Administrator**

University of South Florida



Esri Account Management Support

Who We Are



The Esri Higher Education team is your face of Esri. We support Educational and Administrative use of GIS on your campus.

How does the Education Team help you?

We help with anything relating to your need to Apply Geographic Information Systems on campus

Licensing

What do you have . . .
. . . What do you need

Communication Facilitation

. . . Interactions with other Esri
teams

Support

Tech support . . .
. . . Product support
. . . Best Practices
. . . Training



Esri Higher Education Team

<https://esriurl.com/EsriEdTeam>



GIS improves learning, research, and administration

Supporting education customers with account management and technical solutions.



Geri Miller

Director

My mission is to work with Esri teams and international distributors to support the global Education community in the applications of teaching/learning, research and administration.



Justin Anderson

Team Lead

Justin leads our smart campus operations initiative, focusing on the administrative and operational use of GIS in higher education and K-12. He also supports Esri partner alignment and the larger account management team.



Mark Stewart

Account Manager - midwest

I help higher education users achieve their teaching, research and administrative goals with Esri solutions.



Mark Lecher

Account Manager - southeast

I help higher education users achieve their teaching, research and administrative goals with Esri solutions.



Ridge Waddell

Account Manager - northeast

I love supporting our Education users with successful implementations across campus of their Esri Applications for both Academic and Administrative use purposes. I also value building relationships with our customers.



Andrew Haglund

Account Manager - west coast

As an account manager, I work with faculty, staff, and administrators of colleges and universities to help them leverage geospatial technologies to achieve their teaching, learning, and institutional goals.



Ann Masangcay

Account Manager

Ann Masangcay collaborates with community colleges, universities, and K-12 school districts to better leverage Esri technology for academic, research, and administrative use.



Brian Baldwin

Senior Solution Engineer

I am passionate about supporting the growth of modern GIS practices in academia through lectures, workshops, blogs, and 1:1 engagements.



Canserina Kurnia

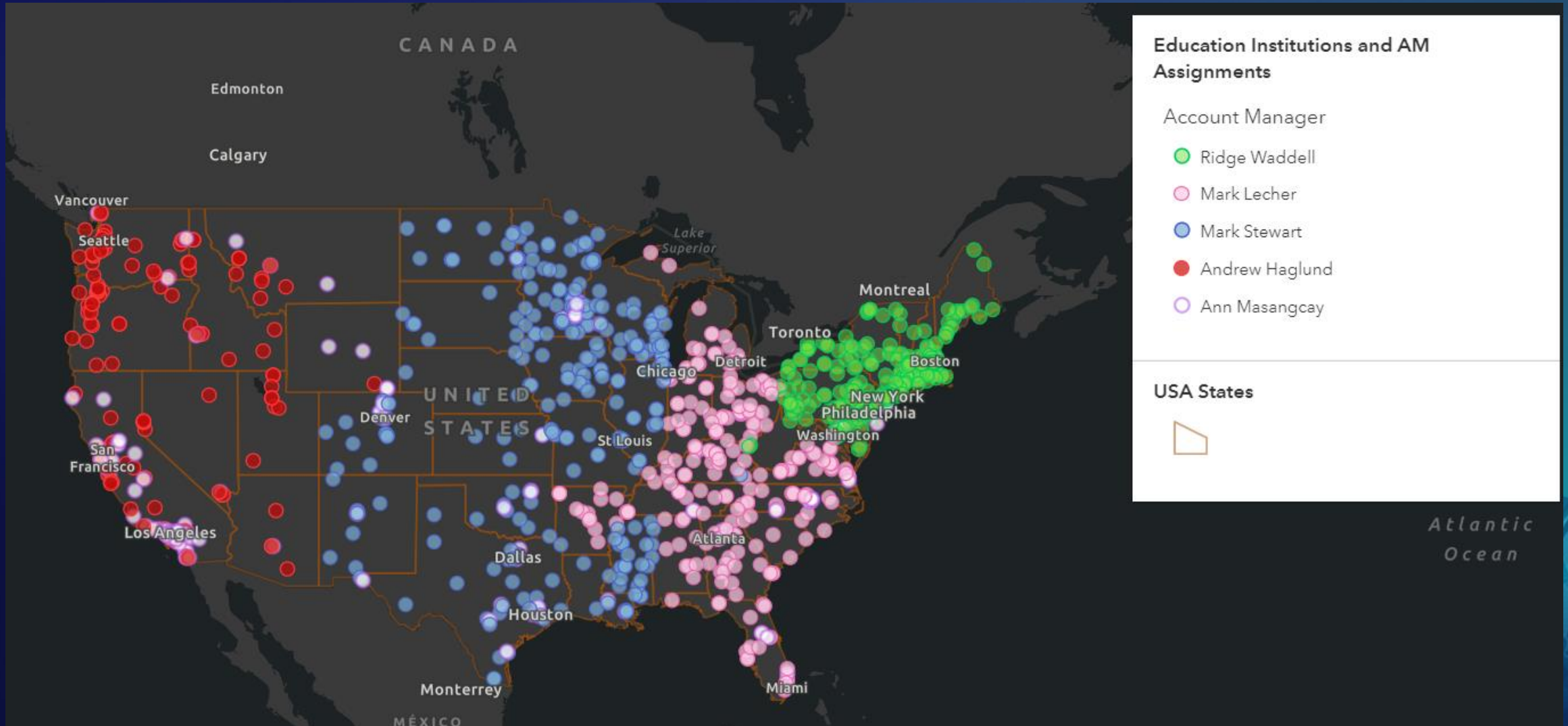
Senior Solution Engineer

I provide technical advice and assistance in advancing GIS and remote sensing technology for teaching and research in higher education.



Find Your Esri Account Manager

<https://go.esri.com/FindMyAM>



Contact Information

- Contact Your Account Manager
 - Andrew Haglund (west coast) - ahaglund@esri.com
 - Mark Lecher (southeast) - mlecher@esri.com
 - Mark Stewart (midwest) - mstewart@esri.com
 - Ridge Waddell (northeast) - rwaddell@esri.com
 - Ann Masangcay - amasangcay@esri.com

Esri Resources

Training Resources: <https://www.esri.com/training/>

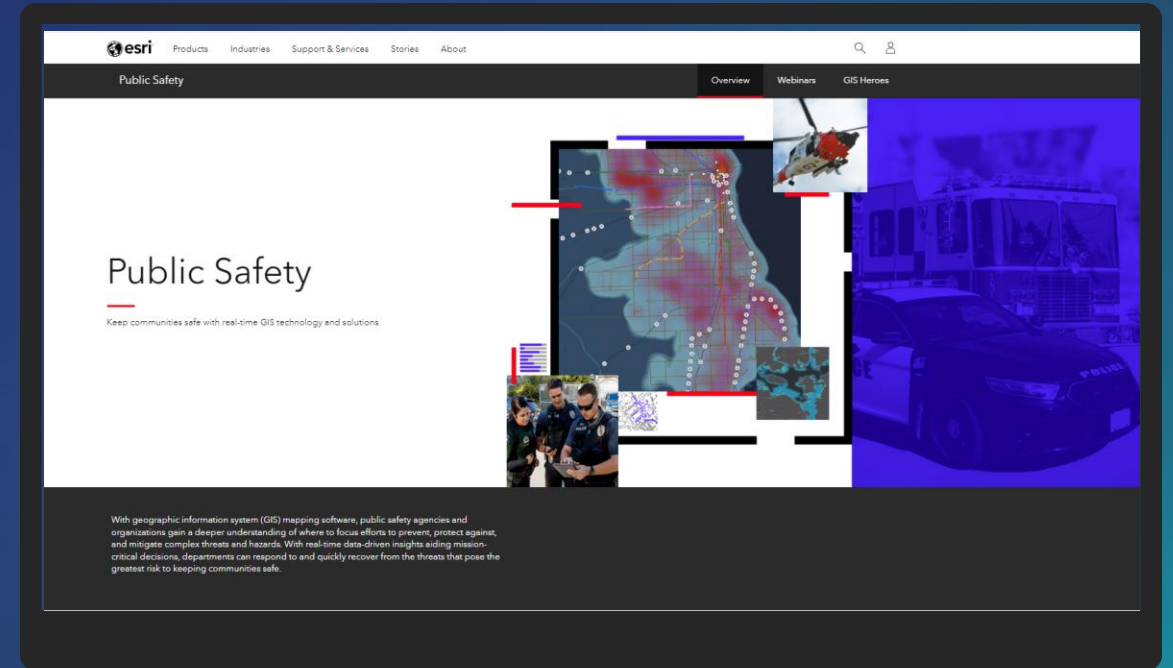
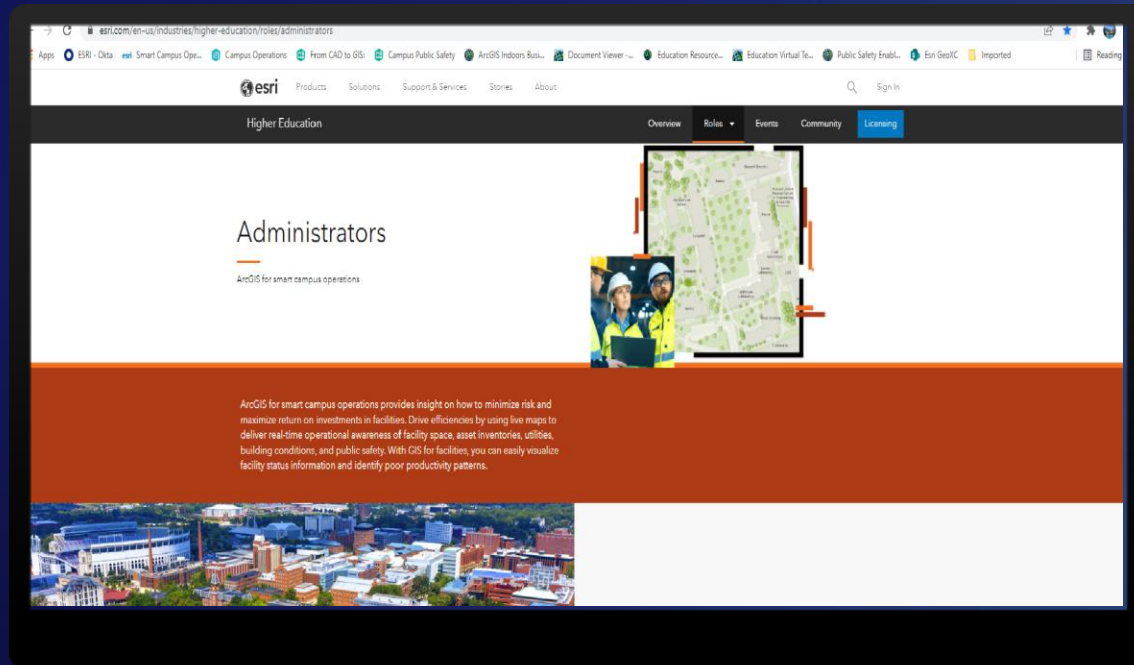
Community Resources: <https://community.esri.com/t5/education/ct-p/education>

CFTA: <https://www.cfta.org/>

Linked In Smart Campus Operations

Page <https://www.linkedin.com/groups/6800562/>

Esri Public Safety Resources



Links provided in the Chat window



esri

THE
SCIENCE
OF
WHERE