

Stay Updated

Don't miss out on the architecture, engineering, and construction (AEC)-related content that matters most to you! By [subscribing to this newsletter](#), you'll receive quarterly updates, expert perspectives, and industry trends delivered straight to your inbox—no more relying on chance to stay informed. Make sure you're always in the know—subscribe today and never miss an issue

Your News from the Esri AEC Team: Winter Edition

Welcome to the latest edition of the Esri News for AEC newsletter.

Discover how innovation is reshaping architecture, engineering, and construction. From powerful new ArcGIS product updates—featuring enhanced design tools, smarter 3D workflows, and improved collaboration—to inspiring success stories, explore the ideas and technology that will power your next big project.



Laurence Litrico

Laurence Litrico
AEC Community Lead



Esri International IMGIS Conference

Connect, Learn, and Transform Your GIS Work

Whether you are new to the Esri International Infrastructure Management & GIS Conference (International IMGIS) or a returning attendee, this conference in Frankfurt, Germany, is your gateway to the latest advancements in GIS for critical infrastructure industries—AEC, electric and gas, renewables and sustainability, telecommunications, transportation, and water. Experience three days of workshops, presentations, and networking opportunities that are designed to inspire your GIS projects and elevate your organization.

[Build Your Agenda](#)

Product Updates

What's New in ArcGIS for AutoCAD: The latest release delivers new capabilities for enhancing civil design and improving collaboration between the office and the field. Learn more about support for related records, m-enabled polylines, and a new .NET SDK to customize and extend ArcGIS for AutoCAD.

ArcGIS Earth: What's New in the Desktop App: The ArcGIS Earth app's new Multi Geometry editing tools let AEC teams merge or split KML features for greater control of site markups while preserving data integrity and interoperability.

What's New in ArcGIS GeoBIM on ArcGIS Enterprise 12.0: The latest release on ArcGIS Enterprise streamlines GIS and BIM integration with simplified 3D models, widgets to build custom web apps, and support for even more project file formats.

New Open-Source App Available: We're excited to share the City Download Portal—a web app built with Esri's ArcGIS Maps SDK for JavaScript. This app lets you select and download buildings and terrain as a single 3D model, directly in the browser. Whether you're an architect, urban planner, or civil engineer, this tool makes it easier to bring real-world 3D context into your modeling workflows using Blender, Rhino, SketchUp, or any tool that supports glTF/GLB.

What's New in ArcGIS Monitor 2025.1: Component relationship graphs in ArcGIS Monitor enable GIS and IT administrators to visualize how hardware and software components in an enterprise GIS deployment are related. This provides greater insight for tracking down potential sources of performance issues, allowing them to save time.

What's New in ArcGIS Indoors, Q4 2025: The November 2025 release of ArcGIS Indoors introduces new tools to extract floor plan features from PDF documents and extract 360-degree images from 360-degree video into an oriented imagery dataset. Also included are the ability to configure maps or scenes as floor aware using the AI assistant, support for importing BIM (.rvt) files in the Floor Plan Editor, and availability of the Indoors Mobile app for iPads.

ArcGIS IPS: What's New in Q4 2025: The latest release of ArcGIS IPS includes an enhanced indoor positioning experience with geometry-aided technology, reducing blue dot lags and eliminating micro movements when standing still. We have also introduced a tool for generating traversability information, enhanced the download speed of IPS data, and provided a dedicated beacon maintenance workflow to monitor beacon deployments.



AEC Community Webinar

Construction

This webinar featured JMT's Nick DiPaolo and Vince Novak with Esri's Rex Hansen discussing how Esri's geospatial foundation integrates with Autodesk tools, vSite subsurface visualization, high-accuracy reality capture, Unity-based AR, and JMT's custom apps.

[Watch Now](#)



AEC GIS Heroes

GIS heroes are GIS champions who inspire others to imagine how GIS can help them do their work better. The following are the most recent honorees:

- Amber Horrie, TRC
- Anthony Le Guen, Pomerleau
- Daniel Johns, JMT

[Meet the GIS Heroes](#)

Blogs



From Survey to Surface: Civil Engineering Collaboration with ArcGIS for AutoCAD

Learn how civil engineers, surveyors, and GIS teams can collaborate on infrastructure designs between Civil 3D while keeping track of changes using ArcGIS for AutoCAD with branch versioning.

[Read Now](#)



GIS Meets Design: Our Creative Journey with ArcGIS Maps for Adobe Creative Cloud

Ever wonder how to turn geographic data into eye-catching graphics? Graphic designer Derrick Mendoza shows how to do that with ArcGIS Maps for Adobe Creative Cloud. From map creation to poster design—check out his tips in this step-by-step guide!

[Read Now](#)



Interview

Q&A: When Digital Twins Meet Real-World Infrastructure Challenges

In this interview with a digital construction leader at AtkinsBalis, we explore how combining GIS and BIM helps bring clarity to complex infrastructure projects, ranging from airports to nuclear facilities.

[Read Now](#)

Case Studies



Modernizing Construction Management for a Landmark Transmission Project.

[Read Now](#)



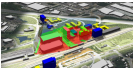
Transforming Major Infrastructure and Tunneling Projects with ArcGIS.

[Read Now](#)



Norway in Pictures with ArcGIS Maps SDK for JavaScript.

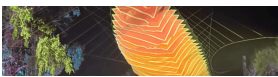
[Read Now](#)



3D GIS Supports Decision-Making for Smart Urban Planning and Design.

[Read Now](#)

Partners Corner



DoLaB's Festival Planning Hits All the Right Notes with Eos GNSS

The Lighting in a Bottle festival at Buena Vista Lake solved long-standing construction delays and safety issues by replacing outdated site maps with high-accuracy digital maps created using drone imagery, Eos Positioning Systems GNSS receivers, and ArcGIS tools.

[Read Now](#)

JOB OPPORTUNITIES

Esri Careers | Job Opportunities

Join Us in Making Big Ideas Happen

Be part of a collaborative, growth-focused culture where creativity is encouraged, work-life balance is respected, and your ideas can help shape the future. Here, you'll make a real difference by advancing location technology that empowers communities, drives innovation, and solves meaningful challenges worldwide.

[Search Esri Jobs](#)

Stay Connected

Network with your peers and find architecture, engineering, and construction resources on [Esri Community](#).

Join the Esri AEC user group on [LinkedIn](#).