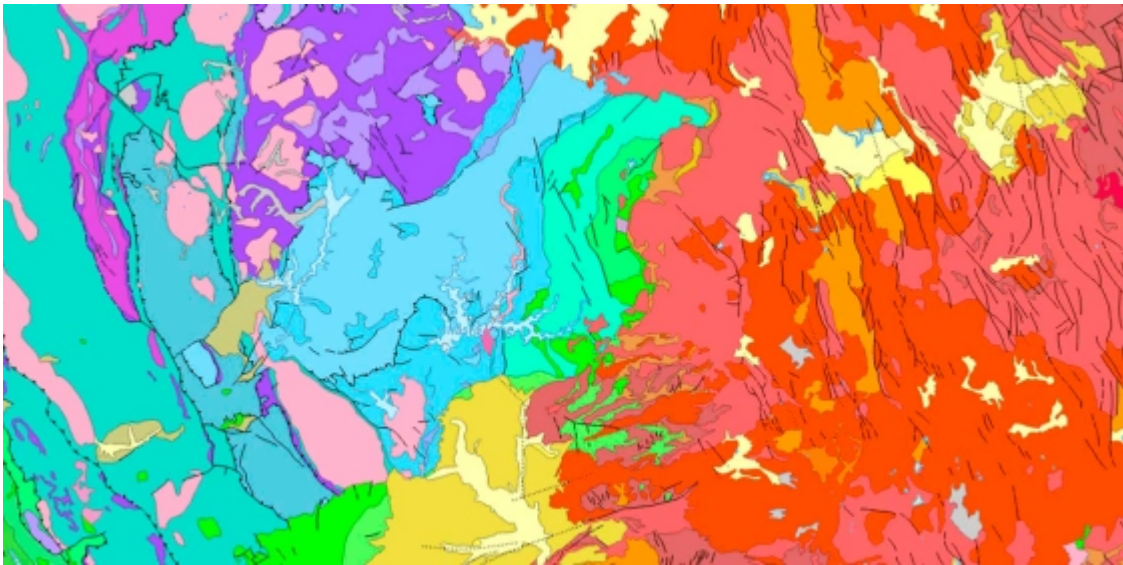




Esri State & Local Brief

A brief collection of curated content for state and local government professionals



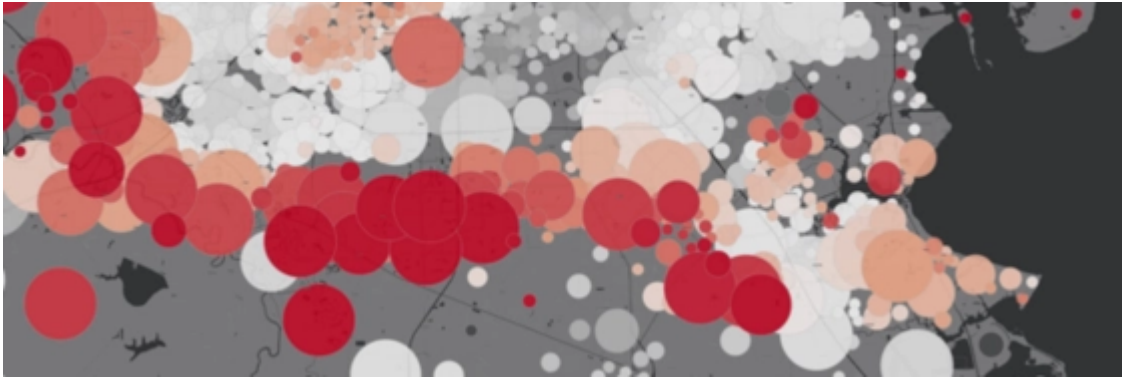
State of California Creates a Knowledge-Based Hub

Breaking down data silos is leading to collaboration within various departments of the State of California.

[Explore More](#)

Share:   





What's Working in the COVID-19 Response?

This webinar will highlight the ways peer organizations are responding to the coronavirus disease 2019 (COVID-19) pandemic, and the best practices that can accelerate your operations.

[Watch Now](#)



Pennsylvania Counties Assess Economic Fallout with Shared Maps

Officials in southeastern Pennsylvania banded together to survey businesses about the economic fallout from COVID-19, putting data on a shared map.

[See More](#)

How the City of Auburn, Maine, Keeps Itself Running during the COVID-19 Pandemic

Learn how Auburn city managers are being early innovators in responding to COVID-19 with GIS.



[See More →](#)

How Local Government Is Responding to COVID-19



See excellent examples of local governments building maps designed to help share critical information with residents about the outbreak.

[Learn More →](#)

Is your information up-to-date?

[UPDATE YOUR INFO](#)

SPECIAL OFFER from Esri and ikeGPS

Esri is partnering with ikeGPS to offer governments the opportunity to improve their operational efficiency.

With this limited-time offer, you will receive the latest ArcGIS technology and a Spike device, a laser measurement solution from ikeGPS, at no additional cost.

Offer Expires May 31, 2020

To learn more, visit
go.esri.com/EsriSpike-Offer



[Esri.com](https://www.esri.com) | [Privacy](#) | [Contact Us](#)

Copyright © 2020 Esri. All rights reserved.

Esri, 380 New York Street, Redlands, CA 92373, USA.

