

Bringing GIS Indoors: Space Planning & Optimization

Brian Baldwin – Esri (bbaldwin@esri.com)
Jade Freeman – Michigan State University
Jim Nelson – Harvard University
Rich Simpson – Esri (rsimpson@esri.com)



Webinar Housekeeping

- Please enter your questions in the chat box
- Microphones will be muted
- Q&A session at the conclusion of the webinar
- Webinar & slides will be available
- Survey following the webinar



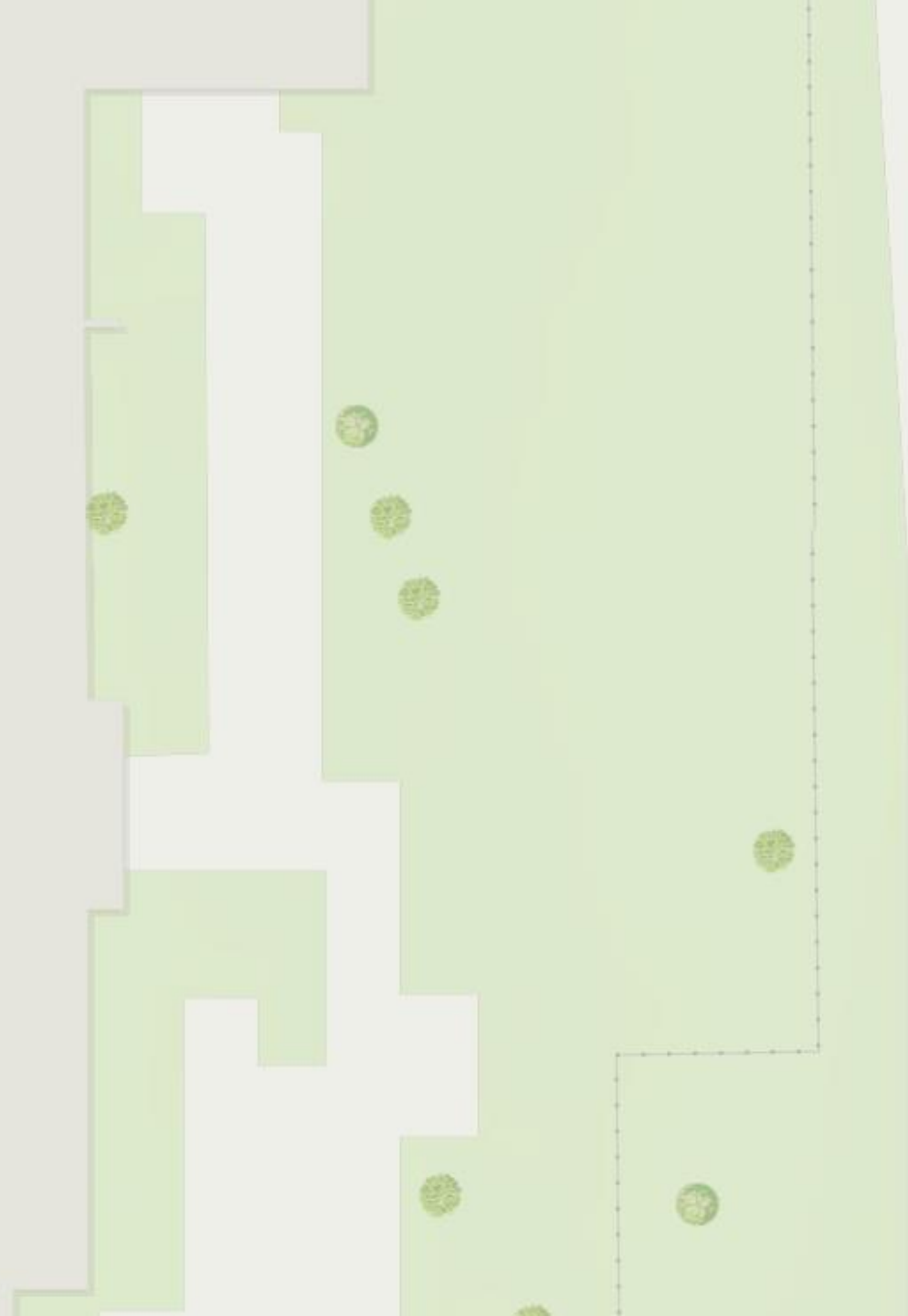
Getting Started: Building your Foundation - Outline

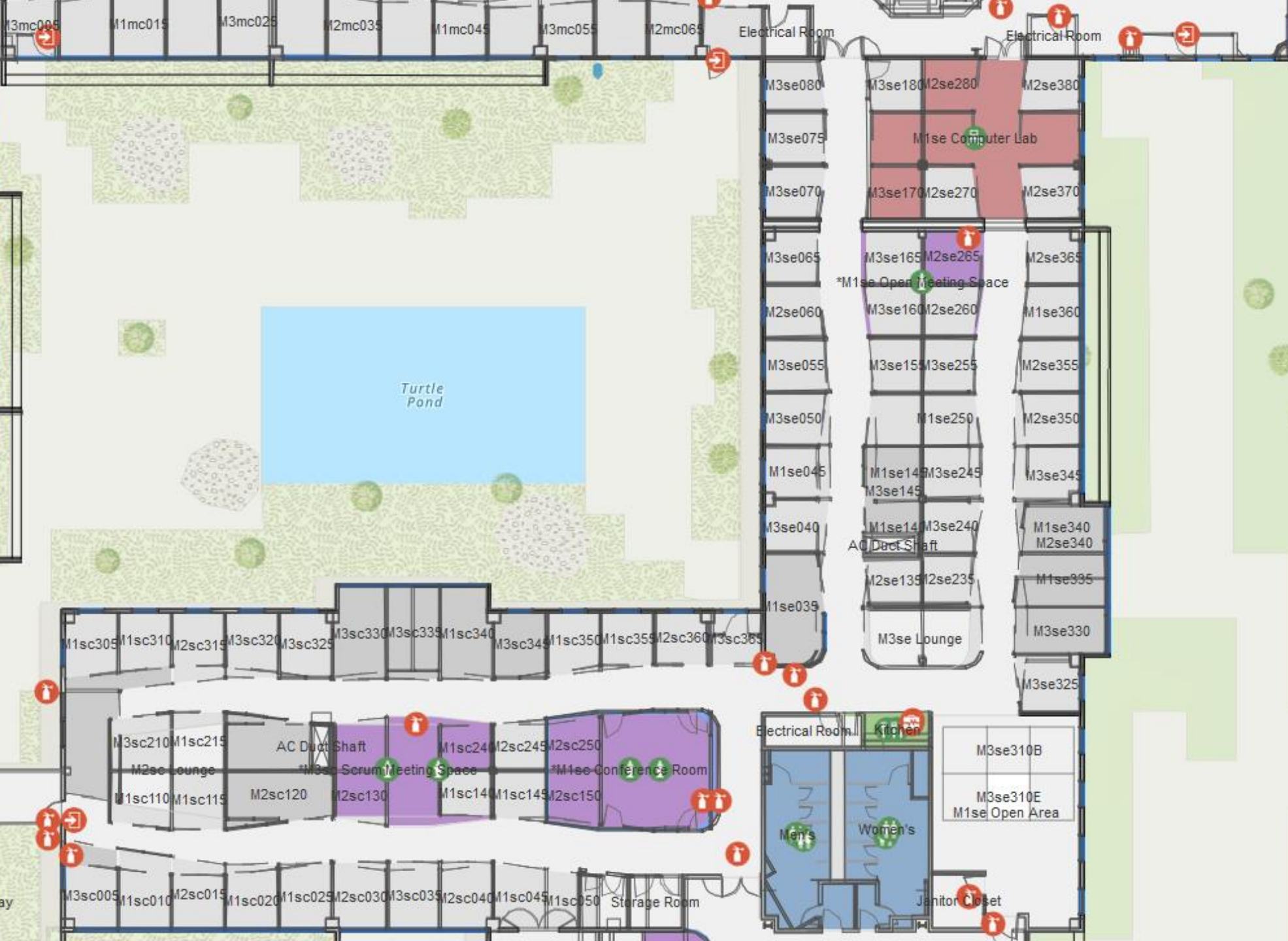
- Indoor GIS
- Michigan State – Jade Freeman
- Harvard University – Jim Nelson
- Indoors Updates – Rich Simpson
- Resources
- Q&A





Esri Redlands





Indoor GIS

- ArcGIS Online or ArcGIS Enterprise
 - Experience Builder
 - Web App Builder
 - Operations Dashboard
- ArcGIS Indoors



Source: Parker Gibbons on Unsplash

Jade Freeman

Michigan State University



James Nelson

Harvard University



Rich Simpson

Esri



Key Takeaways

- 'Spatial glue'
- Internal vs. External use cases
- Internal resources or Esri assistance
- User experience testing



Resources

Welcome to the 'Campus Operations' webinar series!

- Webinar 1 (September 16 at 10 AM PT)—
Getting Started: Building Your Spatial Foundation
- Webinar 2 (October 7 at 10 AM PT) -
Bringing GIS Indoors: Space Planning and Optimization
- **Webinar 3 (October 28 at 10 AM PT) -
Building a Mobile Workforce: Getting Decision Support into the Field**
- Webinar 4 (November 4 at 10 AM PT) -
Optimizing Utilities: Digitally Transforming Network Management





"At the heart of all of this decision making...is data that we can manage, report, visualize, and manipulate through GIS"

Brian Swanson, Assistant VP and CFO, University of Minnesota



Covid-19 Resources

Covid-19 will continue to have a dramatic impact on both the academic as well as operational aspects of higher education. The resources below are just a subset of many of the videos, blogs, and solutions that Esri has released to assist.



Resources		
	What	Description
Solution	Solution	Gallery listing all of the "click" solutions

Actions

- Contact account managers
 - Where do I start?
 - What's my licensing?
 - Indoors demonstration?
- Education Summit @ UC
 - Call for papers is open!
- Esri IMGIS Conference (Oct. 27-30)
- Questions/Issues:
 - Brian Baldwin - bbaldwin@esri.com
- Resource pages/links



Thanks so much!

Q&A

