



# Esri State & Local Brief

A brief collection of curated content for community developers and planning professionals

## Geodesign Summit

February 24–27, 2020  
Redlands, California

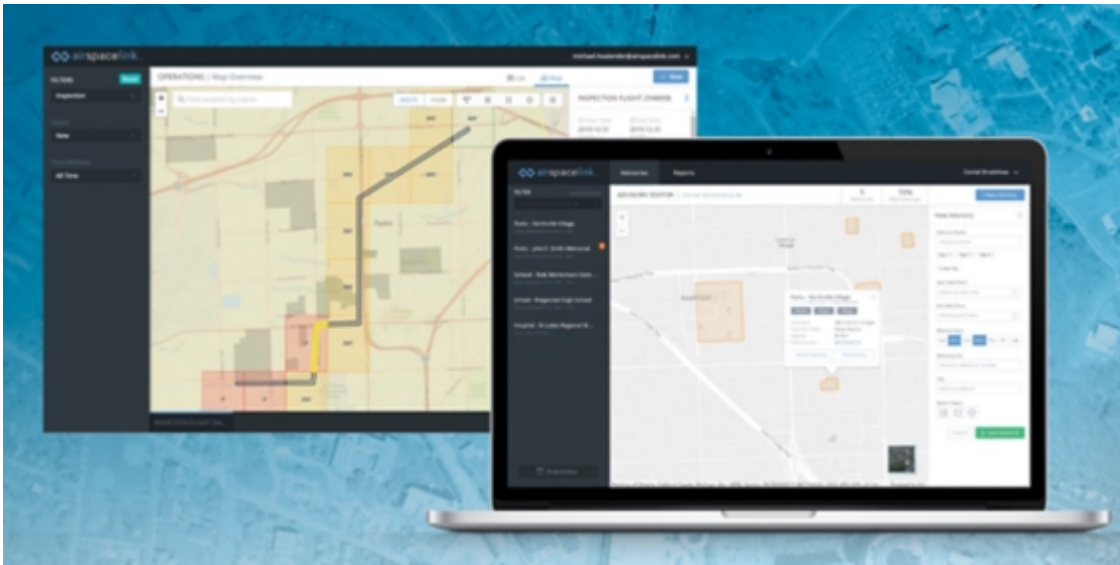
### Seeing Clearly in 2020

There is still time to register for the Geodesign Summit to learn the art of design with the science of geography.

[Discover More](#)

Share:





## Building Highways in the Skies

Learn how the City of Taylor in Michigan became the testing ground for emerging business partner Aerospace Link.

[Explore More](#)

Share: [f](#) [t](#) [in](#)

---

## Esri & GovLoop Webinar

Discover why smart communities happen when governments build great things.

Tuesday, Feb. 18 | 11 a.m. - 12 p.m. PST

[Register today](#) →

## Follow. Connect. Share.

Christopher Thomas - Director of State and Local Government at Esri  
[@GIS\\_Advocate](#)

Esri State and Local Gov Twitter  
[@Esri\\_Com\\_Dev](#)

Esri State and Local Instagram  
[@esrigovteam](#)

Esri State and Local LinkedIn Group  
[State and Local Group](#)

## Special Offer from Esri and ikeGPS

Esri is partnering with ikeGPS to offer governments the opportunity to improve their operational efficiency.

With this limited time offer, you will receive the latest ArcGIS® technology and a Spike device, a laser measurement solution from ikeGPS, at no additional cost.

To learn more, visit  
[go.esri.com/EsriSpike-Offer](https://go.esri.com/EsriSpike-Offer).



You received this due to your subscription to Local and State Government Announcements.

[Esri.com](https://www.esri.com) | [Privacy](#) | [Contact Us](#)

Copyright © 2020 Esri. All rights reserved.

Esri, 380 New York Street, Redlands, CA 92373, USA.

